



Chipsmall Limited consists of a professional team with an average of over 10 year of expertise in the distribution of electronic components. Based in Hongkong, we have already established firm and mutual-benefit business relationships with customers from,Europe,America and south Asia,supplying obsolete and hard-to-find components to meet their specific needs.

With the principle of "Quality Parts,Customers Priority,Honest Operation,and Considerate Service",our business mainly focus on the distribution of electronic components. Line cards we deal with include Microchip,ALPS,ROHM,Xilinx,Pulse,ON,Everlight and Freescale. Main products comprise IC,Modules,Potentiometer,IC Socket,Relay,Connector.Our parts cover such applications as commercial,industrial, and automotives areas.

We are looking forward to setting up business relationship with you and hope to provide you with the best service and solution. Let us make a better world for our industry!



## Contact us

Tel: +86-755-8981 8866 Fax: +86-755-8427 6832

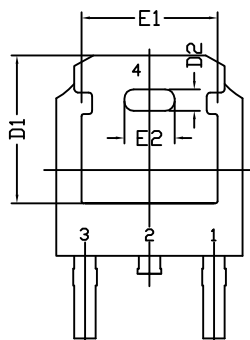
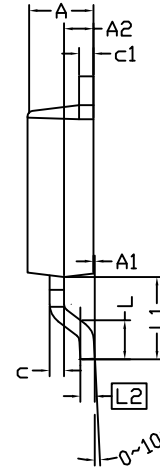
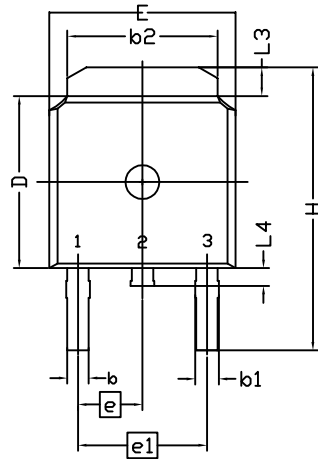
Email & Skype: info@chipsmall.com Web: www.chipsmall.com

Address: A1208, Overseas Decoration Building, #122 Zhenhua RD., Futian, Shenzhen, China



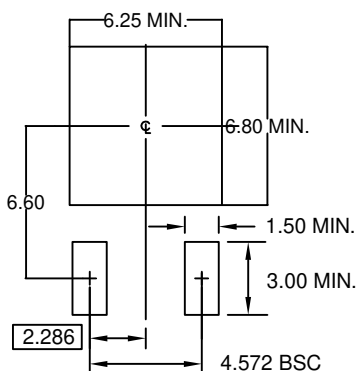


### TO252(DPAK) PACKAGE OUTLINE



| SYMBOL | DIMENSION IN MILLIMETERS |        |        | DIMENSIONS IN INCHES |       |       |
|--------|--------------------------|--------|--------|----------------------|-------|-------|
|        | MIN.                     | NOM.   | MAX.   | MIN.                 | NOM.  | MAX.  |
| A      | 2.184                    | 2.286  | 2.388  | 0.086                | 0.090 | 0.094 |
| A1     | 0.000                    | -----  | 0.127  | 0.000                | ----- | 0.005 |
| A2     | 0.889                    | 1.041  | 1.143  | 0.035                | 0.041 | 0.045 |
| b      | 0.635                    | 0.762  | 0.889  | 0.025                | 0.030 | 0.035 |
| b1     | 0.762                    | 0.840  | 1.143  | 0.030                | 0.033 | 0.045 |
| b2     | 4.953                    | 5.340  | 5.461  | 0.195                | 0.210 | 0.215 |
| c      | 0.450                    | 0.508  | 0.610  | 0.018                | 0.020 | 0.024 |
| c1     | 0.450                    | 0.508  | 0.610  | 0.018                | 0.020 | 0.024 |
| D      | 5.969                    | 6.096  | 6.223  | 0.235                | 0.240 | 0.245 |
| D1     | 5.210                    | 5.249  | 5.380  | 0.205                | 0.207 | 0.212 |
| D2     | 0.662                    | 0.762  | 0.862  | 0.026                | 0.030 | 0.034 |
| E      | 6.350                    | 6.604  | 6.731  | 0.250                | 0.260 | 0.265 |
| E1     | 4.318                    | 4.826  | 4.901  | 0.170                | 0.190 | 0.193 |
| E2     | 1.678                    | 1.778  | 1.878  | 0.066                | 0.070 | 0.074 |
| e      | 2.286 BSC                |        |        | 0.090 BSC            |       |       |
| e1     | 4.572 BSC                |        |        | 0.180 BSC            |       |       |
| H      | 9.398                    | 10.033 | 10.414 | 0.370                | 0.395 | 0.410 |
| L      | 1.270                    | 1.520  | 2.032  | 0.050                | 0.060 | 0.080 |
| L1     | 2.921 REF.               |        |        | 0.115REF.            |       |       |
| L2     | 0.408                    | 0.508  | 0.608  | 0.016                | 0.020 | 0.024 |
| L3     | 0.889                    | 1.016  | 1.270  | 0.035                | 0.040 | 0.050 |
| L4     | 0.635                    | -----  | 1.016  | 0.025                | ----- | 0.040 |

#### RECOMMENDED LAND PATTERN



UNIT: mm

#### NOTE

1. PACKAGE BODY SIZES EXCLUDE MOLD FLASH AND GATE BURRS. MOLD FLASH SHOULD BE LESS THAN 6 MILS.
2. DIMENSION L IS MEASURED IN GAUGE PLANE
3. TOLERANCE 0.10 mm UNLESS OTHERWISE SPECIFIED
4. CONTROLLING DIMENSION IS MILLIMETER. CONVERTED INCH DIMENSIONS ARE NOT NECESSARILY EXACT.
5. REFER TO JEDEC TO-252 (AA)