



Chipsmall Limited consists of a professional team with an average of over 10 year of expertise in the distribution of electronic components. Based in Hongkong, we have already established firm and mutual-benefit business relationships with customers from,Europe,America and south Asia,supplying obsolete and hard-to-find components to meet their specific needs.

With the principle of “Quality Parts,Customers Priority,Honest Operation,and Considerate Service”,our business mainly focus on the distribution of electronic components. Line cards we deal with include Microchip,ALPS,ROHM,Xilinx,Pulse,ON,Everlight and Freescale. Main products comprise IC,Modules,Potentiometer,IC Socket,Relay,Connector.Our parts cover such applications as commercial,industrial, and automotives areas.

We are looking forward to setting up business relationship with you and hope to provide you with the best service and solution. Let us make a better world for our industry!



## Contact us

Tel: +86-755-8981 8866 Fax: +86-755-8427 6832

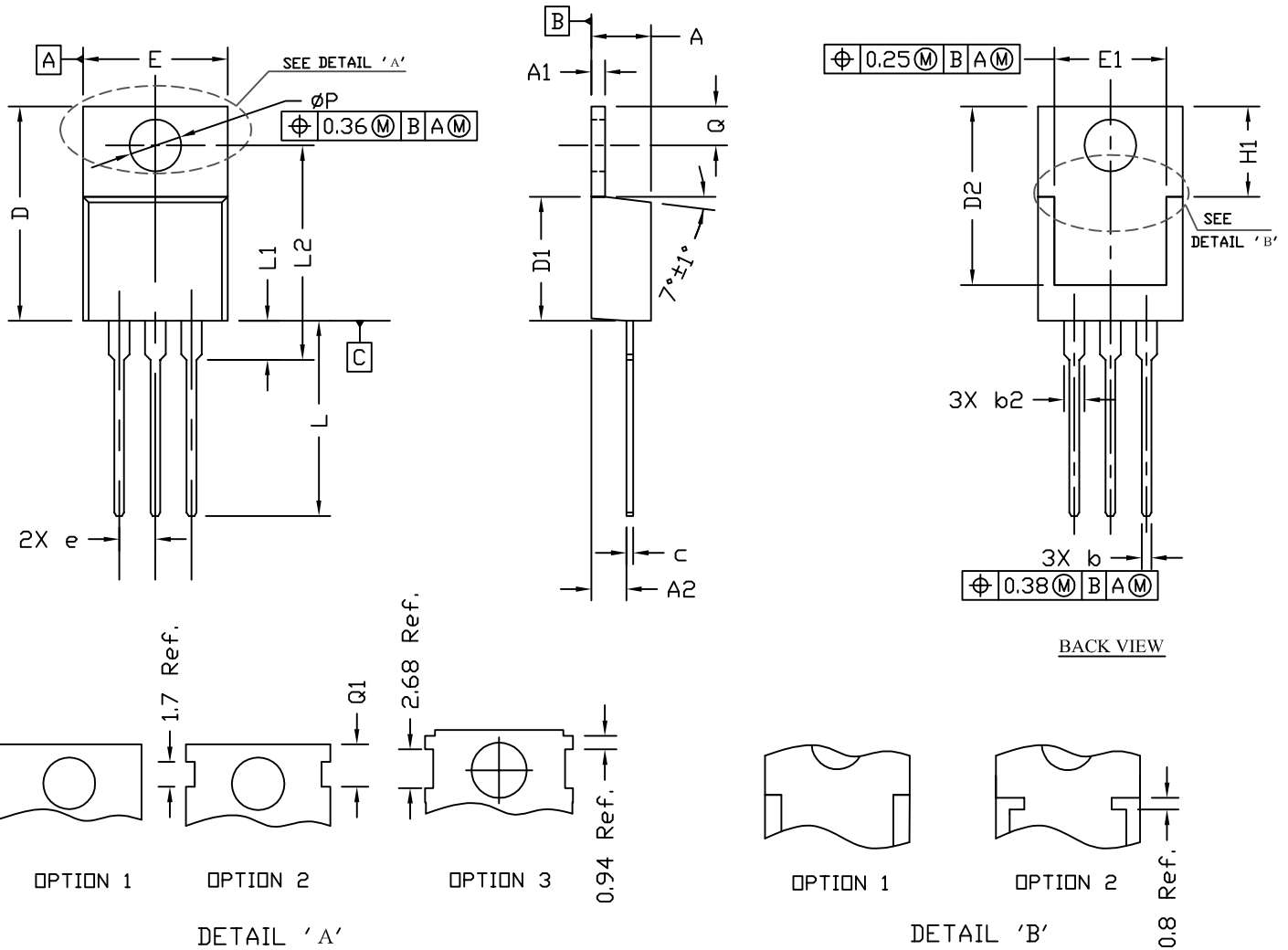
Email & Skype: info@chipsmall.com Web: www.chipsmall.com

Address: A1208, Overseas Decoration Building, #122 Zhenhua RD., Futian, Shenzhen, China

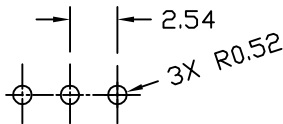




TO220 PACKAGE OUTLINE



RECOMMENDATION OF HOLE PATTERN



UNIT: mm

NOTE

1. PACKAGE BODY SIZES EXCLUDE MOLD FLASH AND GATE BURRS. MOLD FLASH SHOULD BE LESS THAN 6 MIL.
2. TOLERANCE 0.100 MILLIMETERS UNLESS OTHERWISE SPECIFIED.
3. CONTROLLING DIMENSION IS MILLIMETER. CONVERTED INCH DIMENSIONS ARE NOT NECESSARILY EXACT.

SYMBOLS	DIMENSIONS IN MILLIMETERS			DIMENSIONS IN INCHES		
	MIN	NOM	MAX	MIN	NOM	MAX
A	4.30	4.45	4.72	0.169	0.175	0.186
A1	1.15	1.27	1.40	0.045	0.050	0.055
A2	2.20	2.67	2.90	0.087	0.105	0.114
b	0.69	0.81	0.95	0.027	0.032	0.037
b2	1.17	1.37	1.45	0.046	0.050	0.068
c	0.36	0.38	0.60	0.014	0.015	0.024
D	14.50	15.44	15.80	0.571	0.608	0.622
D1	8.59	9.14	9.65	0.338	0.360	0.380
D2	11.43	11.73	12.48	0.450	0.462	0.491
e	2.54 BSC			0.100 BSC		
E	9.66	10.03	10.54	0.380	0.395	0.415
E1	6.22	---	---	0.245	---	---
H1	6.10	6.30	6.50	0.240	0.248	0.256
L	12.27	12.82	14.27	0.483	0.505	0.562
L1	2.47	---	3.90	0.097	---	0.154
L2	---	---	16.70	---	---	0.657
Q	2.59	2.74	2.89	0.102	0.108	0.114
$\phi P$	3.50	3.84	3.89	0.138	0.151	0.153
Q1	2.70	---	2.90	0.106	---	0.114