



Chipsmall Limited consists of a professional team with an average of over 10 year of expertise in the distribution of electronic components. Based in Hongkong, we have already established firm and mutual-benefit business relationships with customers from,Europe,America and south Asia,supplying obsolete and hard-to-find components to meet their specific needs.

With the principle of “Quality Parts,Customers Priority,Honest Operation,and Considerate Service”,our business mainly focus on the distribution of electronic components. Line cards we deal with include Microchip,ALPS,ROHM,Xilinx,Pulse,ON,Everlight and Freescale. Main products comprise IC,Modules,Potentiometer,IC Socket,Relay,Connector.Our parts cover such applications as commercial,industrial, and automotives areas.

We are looking forward to setting up business relationship with you and hope to provide you with the best service and solution. Let us make a better world for our industry!



Contact us

Tel: +86-755-8981 8866 Fax: +86-755-8427 6832

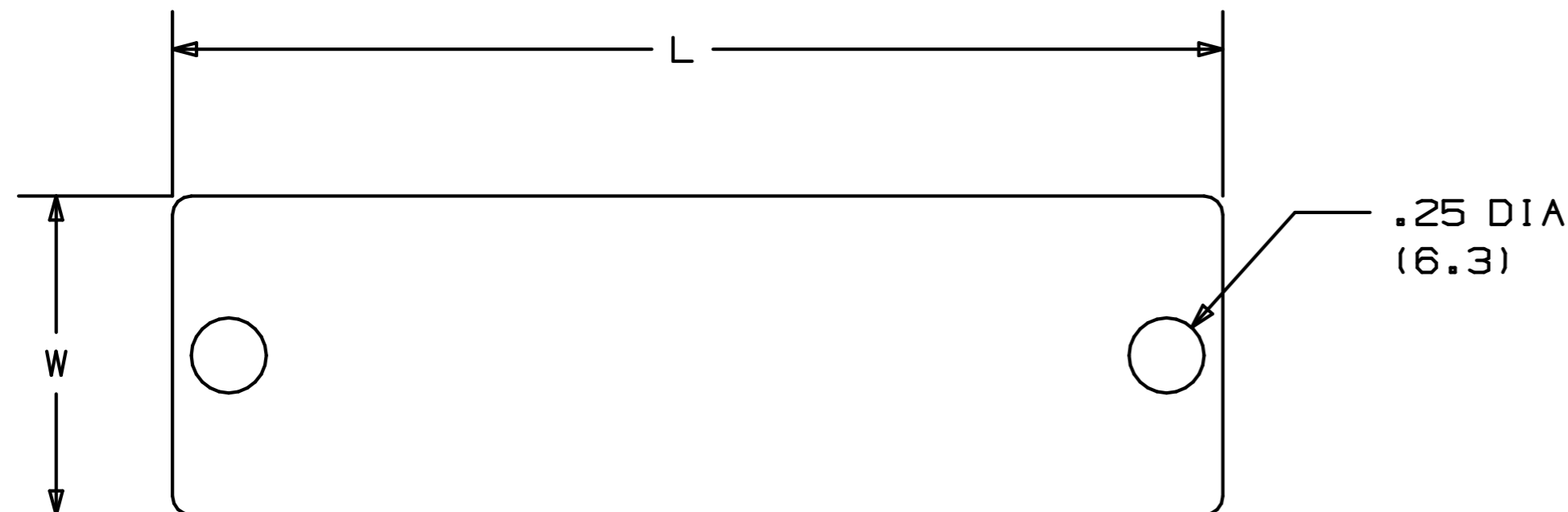
Email & Skype: info@chipsmall.com Web: www.chipsmall.com

Address: A1208, Overseas Decoration Building, #122 Zhenhua RD., Futian, Shenzhen, China



THIS COPY IS PROVIDED ON A RESTRICTED BASIS AND IS NOT TO BE USED IN ANY WAY DETRIMENTAL TO THE INTERESTS OF PANDUIT CORP.

PANDUIT PART NO.	PACKAGE QTY.	COLOR	LENGTH	WIDTH
			"L" ±.02 (.5)	"W" ±.02 (.5)
AP350W06-Q2	25	RED	3.50 (88.9)	1.06 (26.9)
AP350W06-Q5	25	GREEN	3.50 (88.9)	1.06 (26.9)
AP350W06-Q0	25	BLACK	3.50 (88.9)	1.06 (26.9)
AP350W06-Q49	25	GOLD	3.50 (88.9)	1.06 (26.9)
AP350W06-Q6	25	DK BLUE	3.50 (88.9)	1.06 (26.9)



NOTES:

1. DIMENSIONS IN () ARE IN mm.
2. PACKAGING QUANTITY -Q = 25 PCS.
3. CUSTOM PERMANENT MARKING AVAILABLE, CONSULT FACTORY.
4. GALVANIC REACTION MAY OCCUR BETWEEN STAINLESS STEEL TIES AND ALUMINUM MARKER PLATES IN CERTAIN ENVIRONMENTS CAUSING THE ALUMINUM TO CORRODE.
5. UNLESS OTHERWISE SPECIFIED TOLERANCES:
 .XXX = ±.010 [.25]
 .XX = ±.02 [.5]

S41110_02

REV	DATE	BY	CHK	DESCRIPTION	ECN #	PM	CUST	DRAWN BY	CHK'D	SCALE	DRAWING NO.
02	1/06	JAMB	SKB	REMOVED-PART NO'S. AP350W06-Q1, AP350W06-Q3 & AP350W06-Q7 - PARTS ARE OBSOLETE	SS00136	---	---	EJS	SKB	N/A	S41110
01	1/06	JAMB	SKB	ADDED ALL PART NO'S. FOR BLACK, BROWN, ORANGE, GOLD, DK BLUE & PURPLE TAGS.	SS00130	---	---	EJS	SKB	N/A	S41110
00	10/00	EJS	SKB	DWG. RELEASED	08768	CCH	JAC	EJS	SKB	N/A	S41110

PANDUIT

CORP.

TINLEY PARK, ILLINOIS

RECTANGULAR 2-HOLE ALUMINUM
MARKER PLATES
CUSTOMER DRAWING