



Chipsmall Limited consists of a professional team with an average of over 10 year of expertise in the distribution of electronic components. Based in Hongkong, we have already established firm and mutual-benefit business relationships with customers from,Europe,America and south Asia,supplying obsolete and hard-to-find components to meet their specific needs.

With the principle of "Quality Parts,Customers Priority,Honest Operation,and Considerate Service",our business mainly focus on the distribution of electronic components. Line cards we deal with include Microchip,ALPS,ROHM,Xilinx,Pulse,ON,Everlight and Freescale. Main products comprise IC,Modules,Potentiometer,IC Socket,Relay,Connector.Our parts cover such applications as commercial,industrial, and automotives areas.

We are looking forward to setting up business relationship with you and hope to provide you with the best service and solution. Let us make a better world for our industry!



Contact us

Tel: +86-755-8981 8866 Fax: +86-755-8427 6832

Email & Skype: info@chipsmall.com Web: www.chipsmall.com

Address: A1208, Overseas Decoration Building, #122 Zhenhua RD., Futian, Shenzhen, China



Not Recommended for New Design



AP451

2 Channel Linear Controller with Independent Enable Function

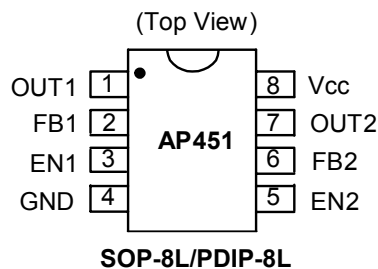
■ Features

- 2 channel linear control Circuitries
- Operating voltage can be up to 18V
- Under Voltage Lockout (UVLO) Protection
- Current limit external BJT only
- Independent enables function
- Low ESR output capacitor (Multi-layer chip capacitor (MLCC)) application
- Adjustable output voltage by external resisters
- 0.8V voltage reference Output
- NPN or N-channel MOSFET driving capability
- 8-pin SOP, PDIP **Pb-Free** packages

■ Applications

- LCD Monitor/TV
- XDRom, XDSL Product
- M/B, VGA

■ Pin Assignment



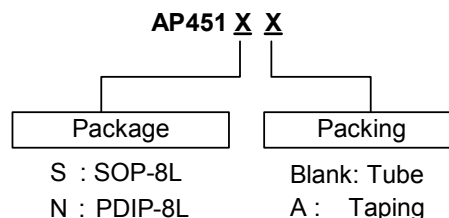
■ General Description

The AP451 integrates two channel linear controllers into a single chip, mainly designs for power-supply regulator. All the functions included an on-chip 0.8V reference output, an error amplifier, UVLO, current limit. During low VCC situation, the UVLO makes sure that the outputs are off until the internal circuit is operational normally.

■ Pin Descriptions

Pin Name	Pin No.	Description
OUT1	1	Linear Controller CH1output
FB1	2	Channel 1 Voltage Feedback
EN1	3	Channel 1 Enable Pin
GND	4	Signal Ground
EN2	5	Channel 2 Enable Pin
FB2	6	Channel 2 Voltage Feedback
OUT2	7	Linear Controller CH2 output
Vcc	8	Supply Voltage

■ Ordering Information



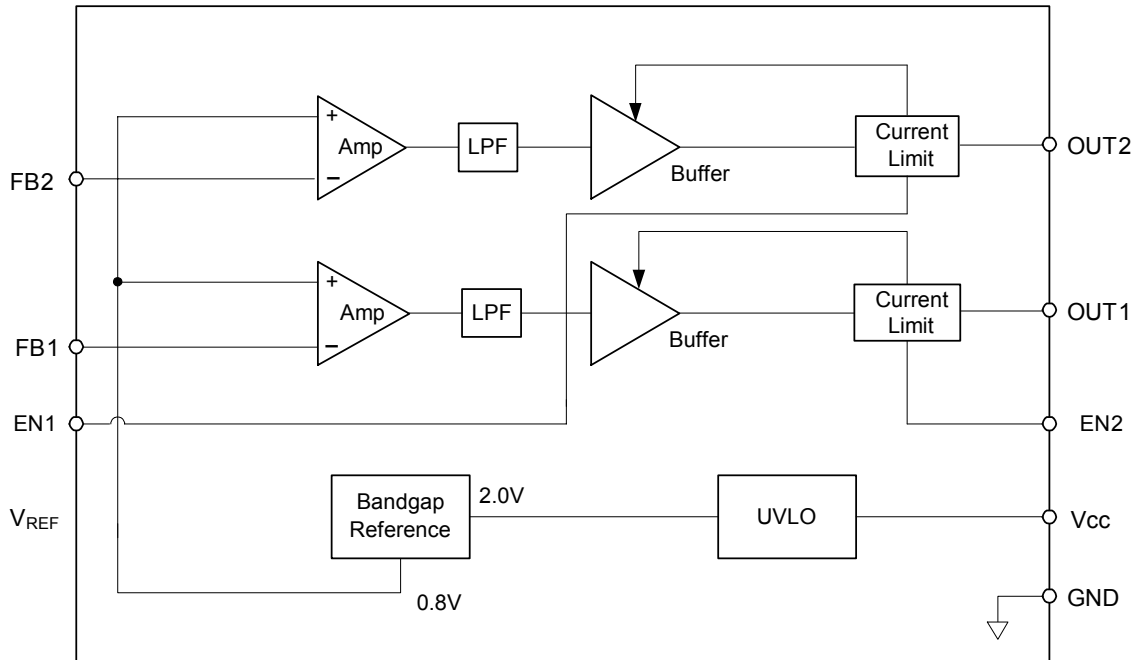
Not Recommended for New Design



AP451

2 Channel Linear Controller with Independent Enable Function

■ Block Diagram



■ Absolute Maximum Ratings

Symbol	Parameter	Rating	Unit
V_{CC}	Supply Voltage	19	V
V_{EN}	Enable Pin Voltage	18	V
V_{O1} / V_{O2}	CH1 / CH2 Linear Driver Voltage to Ground	$-0.3 \leq V \leq 18$	V
T_{OP}	Operating Temperature Range	-20 to +85	$^{\circ}C$
T_{ST}	Storage Temperature Range	-65 to +150	$^{\circ}C$
T_{LEAD}	Lead Temperature 1.6 mm (1/16 inch) from Case for 10 Seconds	260	$^{\circ}C$

■ Recommended Operating Conditions

Symbol	Parameter	Min.	Max.	Unit
V_{CC}	Supply Voltage	3.0	18	V
V_{EN}	Enable Pin Voltage	According to V_{CC}		V
V_{O1} / V_{O2}	CH1 / CH2 Linear Driver Voltage to Ground	-	$V_{CC}-1.5$	V
I_{FB}	Current into Feedback Terminal	-	45	μA
R_F	Feedback Resistor	100	-	$k\Omega$
T_{OP}	Operating Free-air Temperature	-20	85	$^{\circ}C$

Not Recommended for New Design



AP451

2 Channel Linear Controller with Independent Enable Function

Electrical Characteristics (T_A=25°C, V_{CC}=6V)

Reference (REF)

Symbol	Parameter	Conditions	Min.	Typ.	Max.	Unit
V _{OUT1/2}	V _{O1} / V _{O2} Connect to FB1 / FB2		0.784	0.800	0.816	V
	Output Voltage Change with Temperature	T _A = -20°C ~ 25°C	-	-0.1	±1	%
		T _A = 25°C ~ 85°C	-	-0.2	±1	%

Under voltage lockout (UVLO)

V _{UT}	Upper Threshold Voltage (V _{CC})	I _{O(REF)} = 0.1mA T _A = 25°C	-	2.1	-	V
V _{LWT}	Lower Threshold Voltage (V _{CC})		-	2.0	-	V
V _{HT}	Hysteresis (V _{CC})		-	100	-	mV

Output section

I _{CL1}	CH1 Current Limit	V _{CC} =5V, V _{NOUT2} =V _{FB2} =0V	25	-	-	mA
I _{CL2}	CH2 Current Limit	V _{CC} =5V, V _{NOUT3} =V _{FB3} =0V	25	-	-	mA

Enable function

V _{IH}	EN Pin Logic Input Threshold	High (regulator ON)	2.0	1.3	-	V
V _{IL}	Voltage for EN1/2	Low (regulator OFF)	-		0.6	V
I _{IH}	EN pin Logic Input Current for EN1/2	High (regulator ON)	-	10	-	µA
I _{IL}		Low (regulator OFF)	-	-10	-	µA

Total device

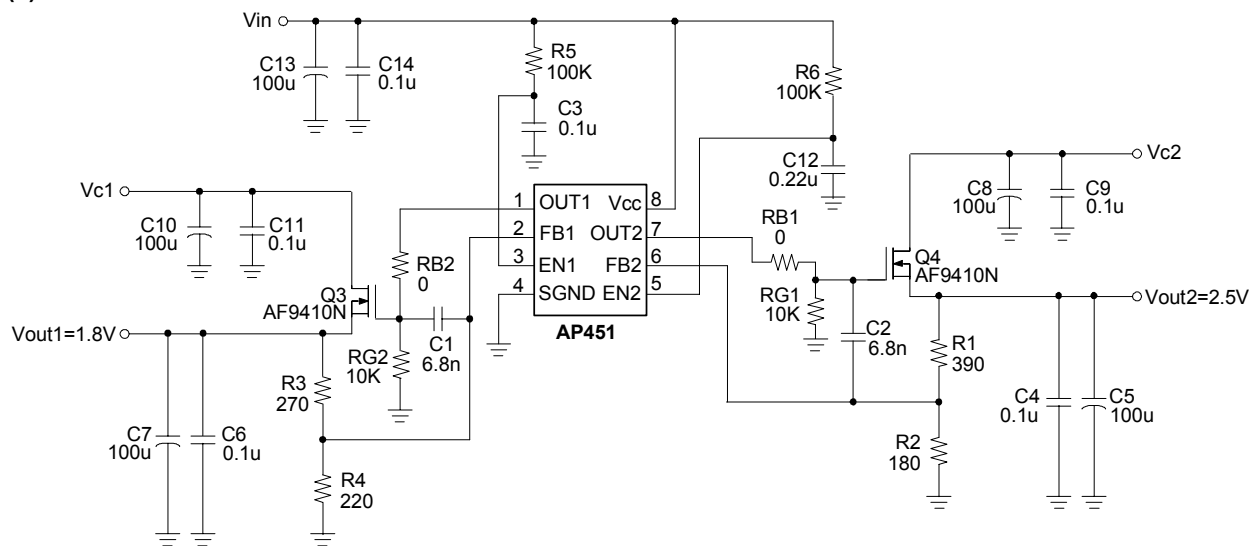
I _{CCA}	Average Supply Current		-	4	6	mA
I _{SD}	Shutdown Current		-	180	500	µA

Thermal Resistor

θ _{JA}	Thermal Resistor Junction to Ambient	SOP8	-	120	-	°C/W
		PDIP8	-	90	-	°C/W

Typical Application Circuit

(1) MOSFET



$$V_{out1} = V_{FB1} \times \left(1 + \frac{R3}{R4} \right); \quad V_{out2} = V_{FB2} \times \left(1 + \frac{R1}{R2} \right)$$

R1 and R3=180~2KΩ

Not Recommended for New Design

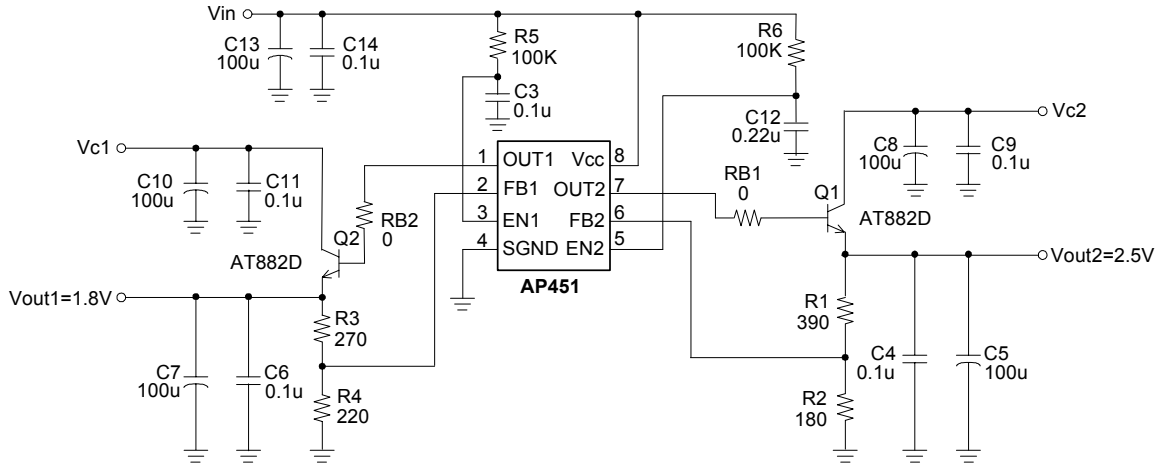


AP451

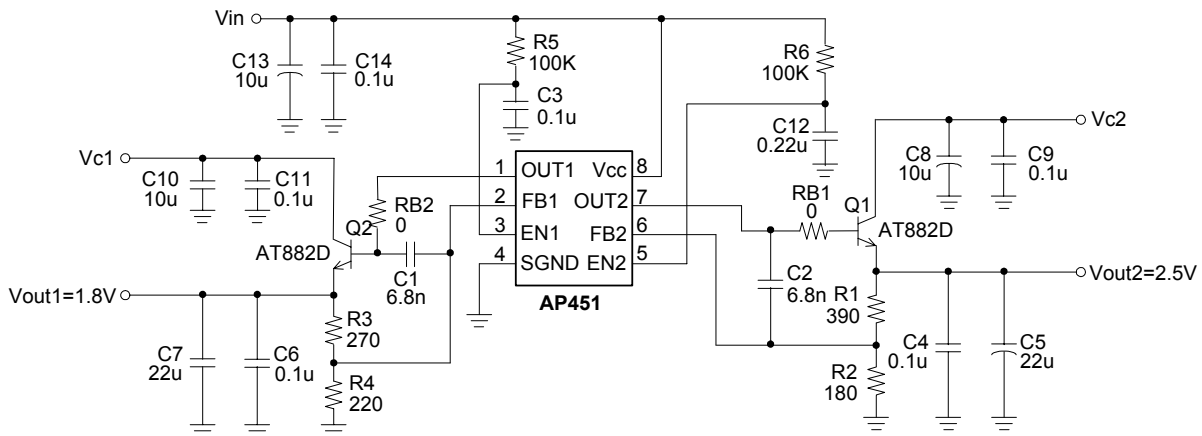
2 Channel Linear Controller with Independent Enable Function

■ Typical Application Circuit

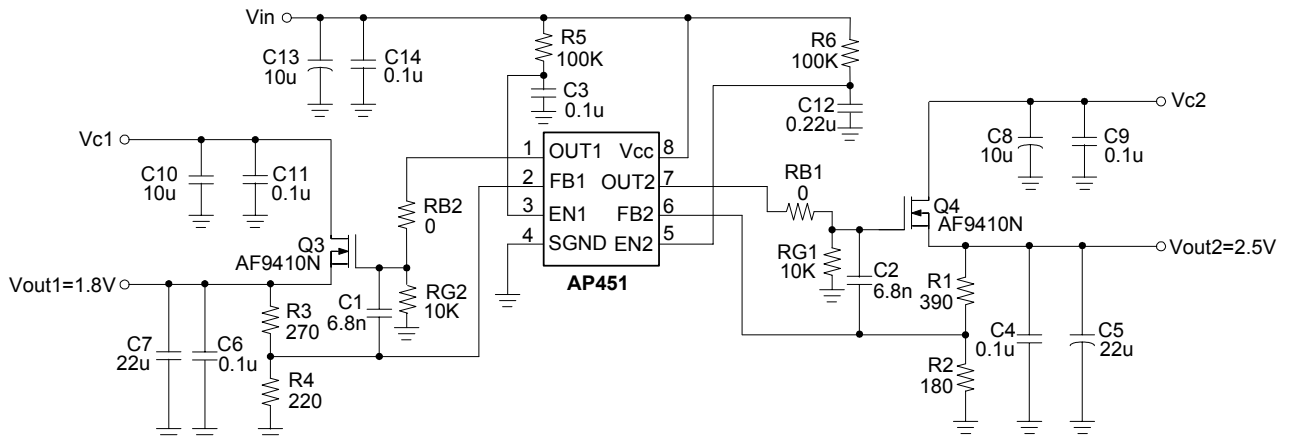
(2) BJT



(3) BJT with MLCC



(4) MOSFET with MLCC



Not Recommended for New Design

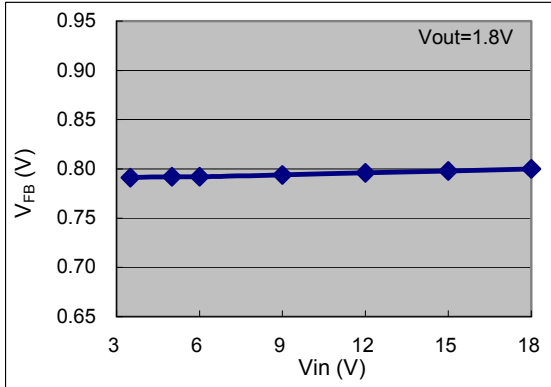


AP451

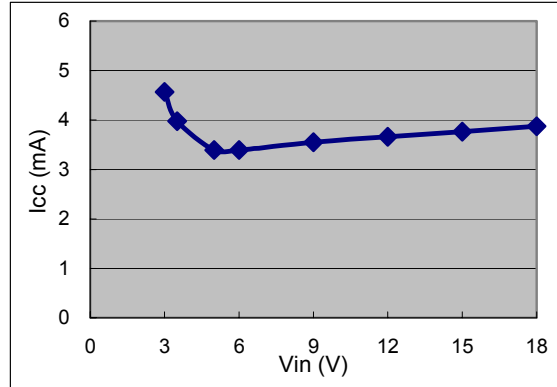
2 Channel Linear Controller with Independent Enable Function

■ Typical Characteristics

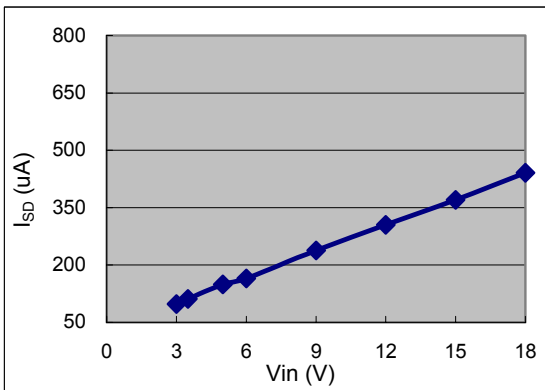
Line Regulation
(BJT(882): $V_{CC}=V_{in}$, V_{c1} & $V_{c2}=3.3V$, $I_{out}=0.01A$)



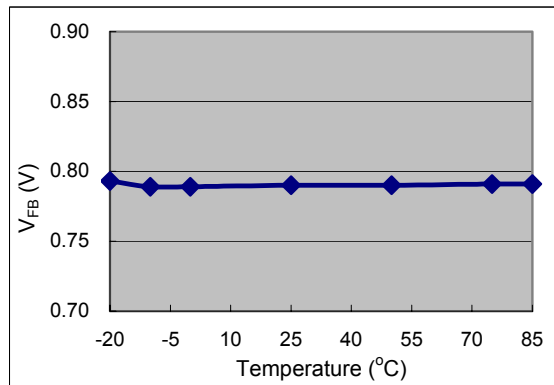
Line Regulation
(BJT(882): $V_{CC}=V_{in}$, V_{c1} & $V_{c2}=3.3V$, $I_{out}=0.01A$)



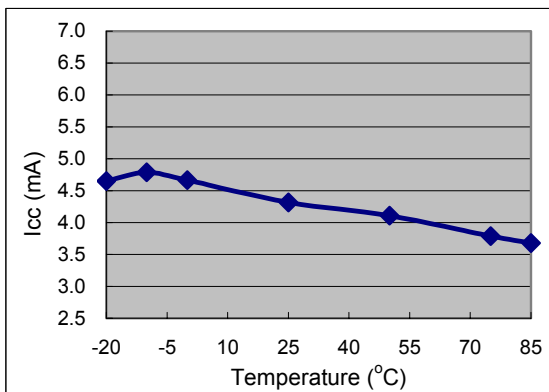
Line Regulation
(BJT(882): $V_{CC}=V_{in}$, V_{c1} & $V_{c2}=3.3V$, $I_{out}=0.01A$)



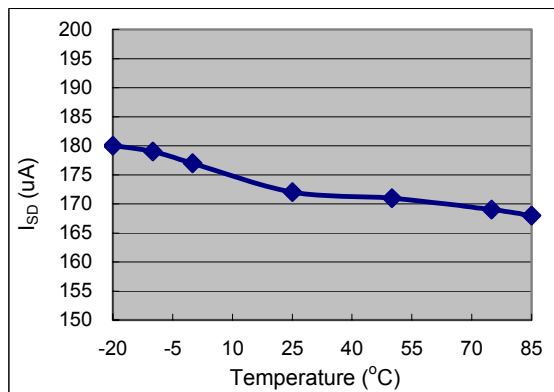
Temperature v.s. V_{FB}
(MOS(AF9410N): $V_{CC}=6V$; V_{c1} & $V_{c2}=3.3V$; $V_{out1}=1.8V$, $V_{out2}=2.5V$, $I_{out1\&2}=10mA$)



Temperature v.s. I_{CC}
(MOS(AF9410N): $V_{CC}=6V$; V_{c1} & $V_{c2}=3.3V$; $V_{out1}=1.8V$, $V_{out2}=2.5V$, $I_{out1\&2}=10mA$)



Temperature v.s. I_{SD}
(MOS(AF9410N): $V_{CC}=6V$; V_{c1} & $V_{c2}=3.3V$; $V_{out1}=1.8V$, $V_{out2}=2.5V$, $I_{out1\&2}=10mA$)



Not Recommended for New Design

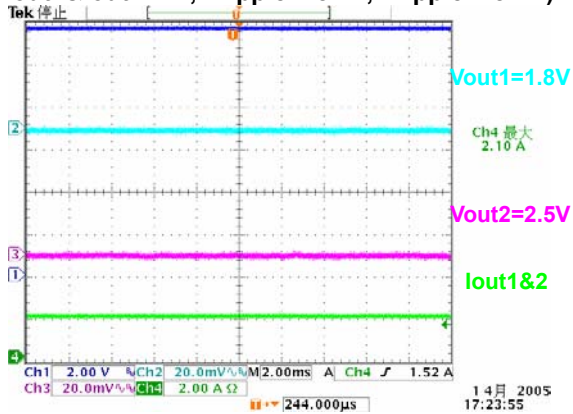


AP451

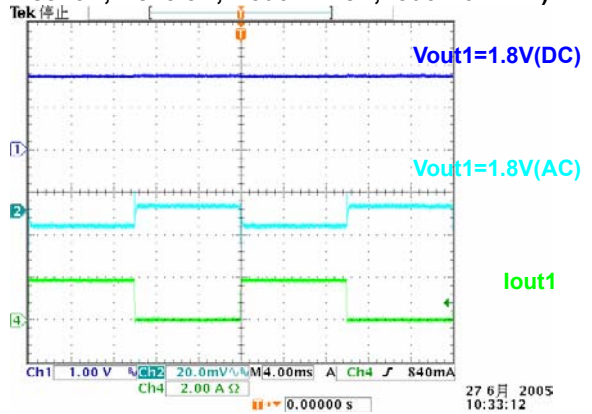
2 Channel Linear Controller with Independent Enable Function

■ Typical Characteristics(Continued)

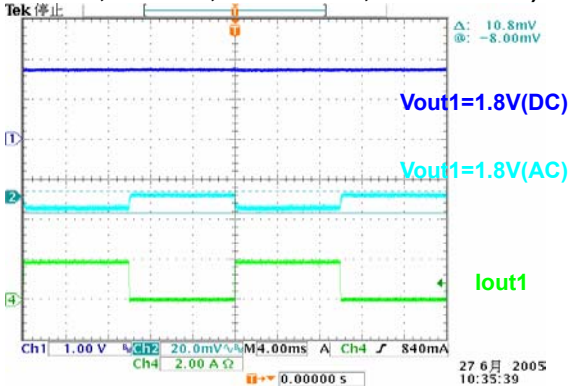
Vout Ripple
(Vcc=6V; Vc1&Vc2=3.3V; Vout1=1.8V, Vout2=2.5V,
Iout1&Iout2=1A, Vripple1=8mV, Vripple2=8mV)



Power Transient Test
(Use BJT(882)+Cout=220uF(AL)
Vcc=6V; Vc=3.3V; Vout1= 1.8V, Iout1=0A~2A)



Power Transient Test
(Use MOS(AF9410N)+220uF (AL)
Vcc=6V; Vc=3.3V; Vout1= 1.8V, Iout1=0A~2A)



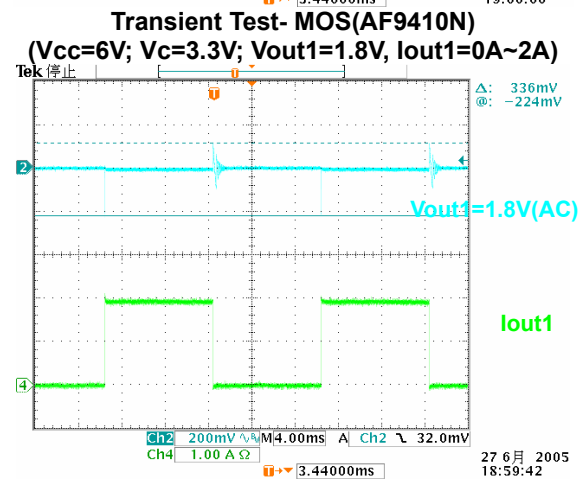
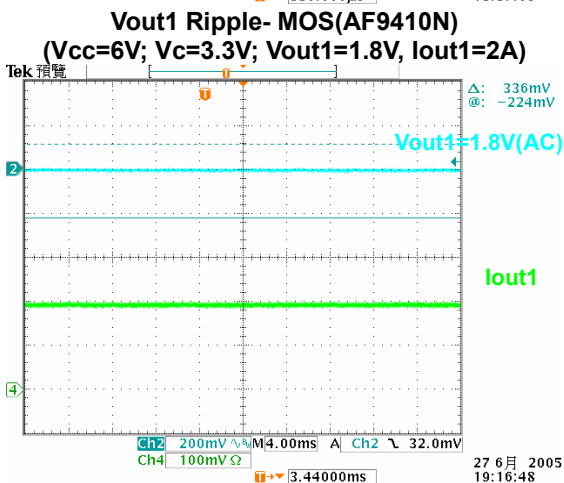
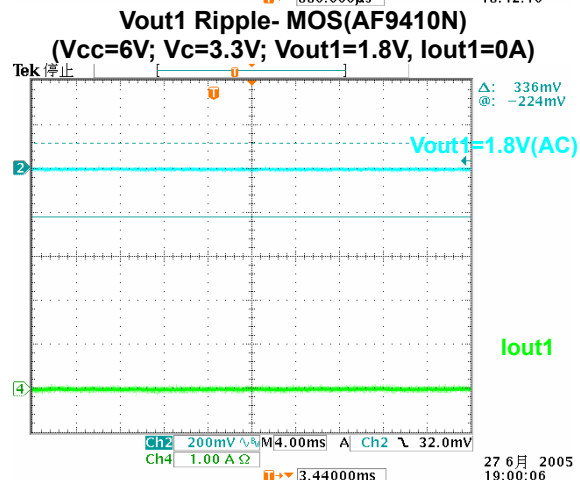
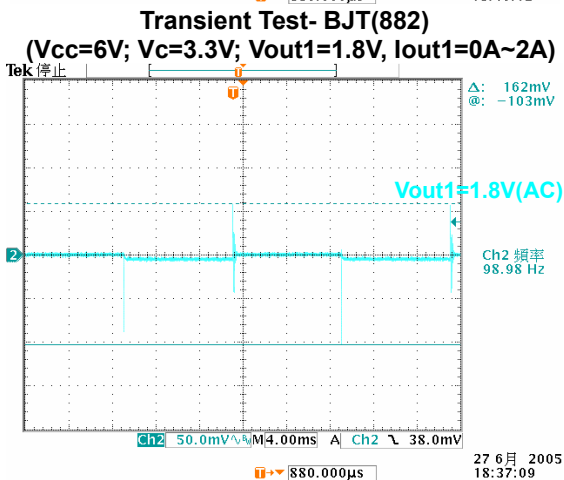
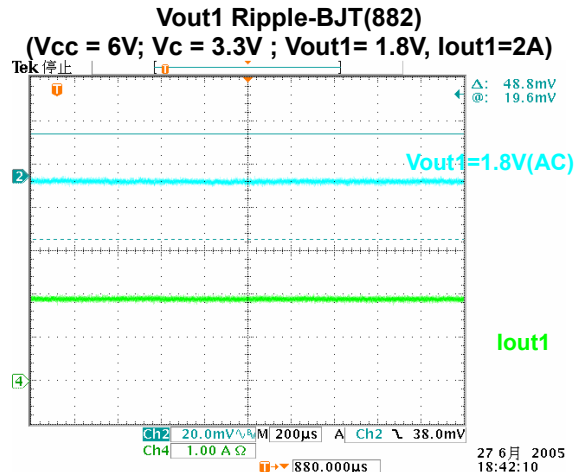
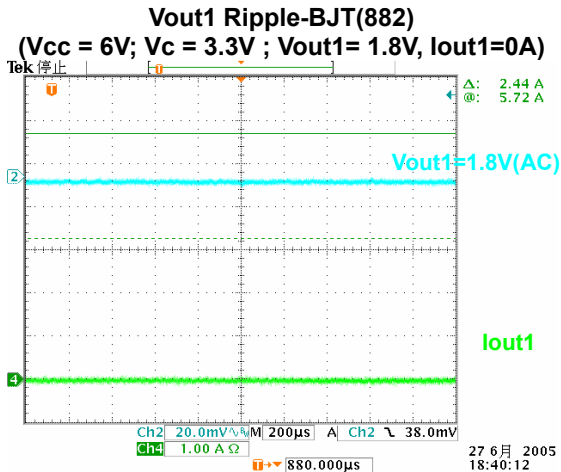
Not Recommended for New Design



AP451

2 Channel Linear Controller with Independent Enable Function

■ Typical Characteristics (with MLCC)



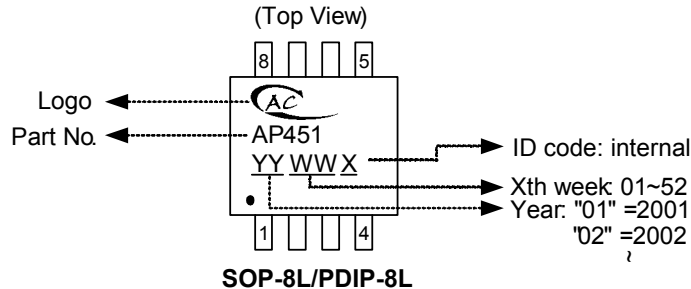
Not Recommended for New Design



AP451

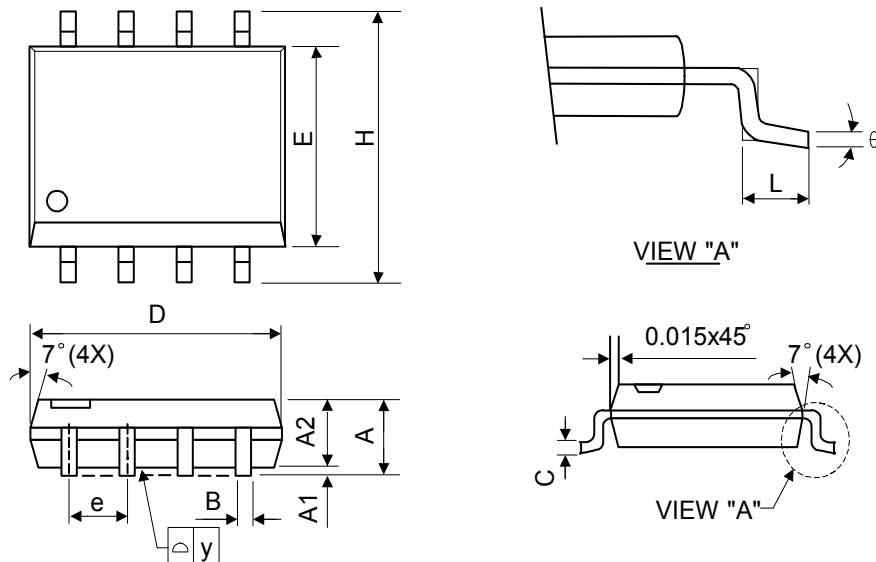
2 Channel Linear Controller with Independent Enable Function

■ Marking Information



■ Package Information

(1) SOP-8L



Symbol	Dimensions In Millimeters			Dimensions In Inches		
	Min.	Nom.	Max.	Min.	Nom.	Max.
A	1.40	1.60	1.75	0.055	0.063	0.069
A1	0.10	-	0.25	0.040	-	0.100
A2	1.30	1.45	1.50	0.051	0.057	0.059
B	0.33	0.41	0.51	0.013	0.016	0.020
C	0.19	0.20	0.25	0.0075	0.008	0.010
D	4.80	5.05	5.30	0.189	0.199	0.209
E	3.70	3.90	4.10	0.146	0.154	0.161
e	-	1.27	-	-	0.050	-
H	5.79	5.99	6.20	0.228	0.236	0.244
L	0.38	0.71	1.27	0.015	0.028	0.050
y	-	-	0.10	-	-	0.004
θ	0°	-	8°	0°	-	8°

Not Recommended for New Design

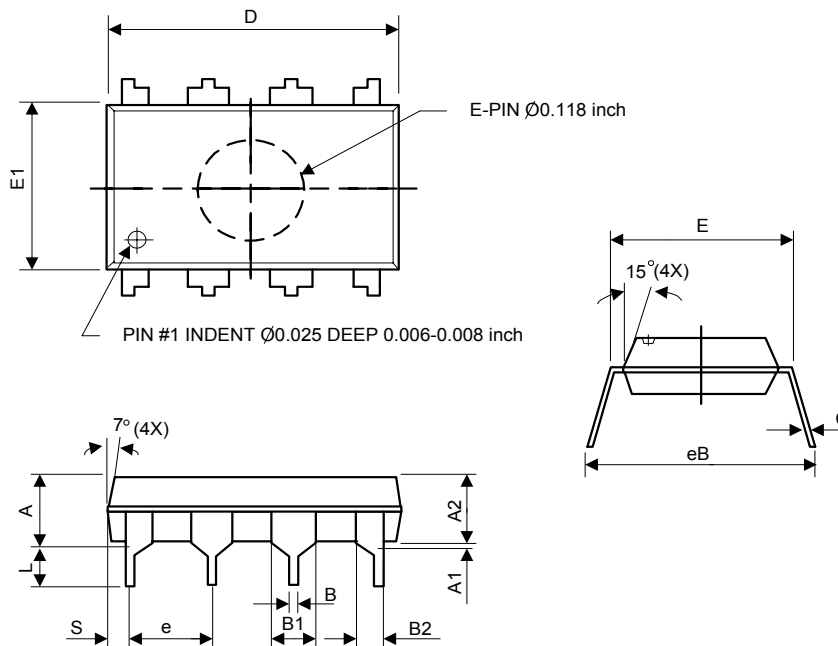


AP451

2 Channel Linear Controller with Independent Enable Function

■ Package Information (Continued)

(2) PDIP-8L



Symbol	Dimensions in millimeters			Dimensions in inches		
	Min.	Nom.	Max.	Min.	Nom.	Max.
A	-	-	5.33	-	-	0.210
A1	0.38	-	-	0.015	-	-
A2	3.1	3.30	3.5	0.122	0.130	0.138
B	0.36	0.46	0.56	0.014	0.018	0.022
B1	1.4	1.52	1.65	0.055	0.060	0.065
B2	0.81	0.99	1.14	0.032	0.039	0.045
C	0.20	0.25	0.36	0.008	0.010	0.014
D	9.02	9.27	9.53	0.355	0.365	0.375
E	7.62	7.94	8.26	0.300	0.313	0.325
E1	6.15	6.35	6.55	0.242	0.250	0.258
e	-	2.54	-	-	0.100	-
L	2.92	3.3	3.81	0.115	0.130	0.150
eB	8.38	8.89	9.70	0.330	0.350	0.382
S	0.71	0.84	0.97	0.028	0.033	0.038