



Chipsmall Limited consists of a professional team with an average of over 10 year of expertise in the distribution of electronic components. Based in Hongkong, we have already established firm and mutual-benefit business relationships with customers from,Europe,America and south Asia,supplying obsolete and hard-to-find components to meet their specific needs.

With the principle of “Quality Parts,Customers Priority,Honest Operation,and Considerate Service”,our business mainly focus on the distribution of electronic components. Line cards we deal with include Microchip,ALPS,ROHM,Xilinx,Pulse,ON,Everlight and Freescale. Main products comprise IC,Modules,Potentiometer,IC Socket,Relay,Connector.Our parts cover such applications as commercial,industrial, and automotives areas.

We are looking forward to setting up business relationship with you and hope to provide you with the best service and solution. Let us make a better world for our industry!



Contact us

Tel: +86-755-8981 8866 Fax: +86-755-8427 6832

Email & Skype: info@chipsmall.com Web: www.chipsmall.com

Address: A1208, Overseas Decoration Building, #122 Zhenhua RD., Futian, Shenzhen, China



Apacer

Fingerprint Flash Drive

AH650 User's Manual

Table of Contents

1. Before You Start	2
1.1 AH650 Fingerprint Flash Drive at a Glance	2
1.2 System Partition.....	3
1.3 Safety Instructions	3
2. Running the Fingerprint Management Application	4
3. Enrolling Fingerprints	5
3.1 Enrolling Fingerprints for Administrators	5
3.2 Enrolling Fingerprints for Users.....	7
4. Managing Administrator and User Accounts	9
4.1 Changing Administrator Accounts.....	9
4.2 Deleting User Accounts	10
4.3 Editing Account Information	11
5. Accessing Files.....	12
5.1 Accessing the Public Partition.....	12
5.2 Accessing the Hidden Partition	12
Appendix – LED Indicator Table	13

1. Before You Start

Thank you for purchasing Apacer AH650 Fingerprint Flash Drive! AH650 is an unparalleled integration of secure data storage and biometric identification technology. Designed for those demanding the highest level of data protection, the drive can safeguard sensitive data against unauthorized access attempts with fingerprint authentication. Data stored on the drive are safely protected and can only be accessed when the scanned fingerprint is authenticated. Featuring convenience and top-class security, it not only spares you the trouble of memorizing long passwords, but also brings you a peace of mind.

1.1 AH650 Fingerprint Flash Drive at a Glance



No.	Item	Description
1.	LED Indicator	Displays the status of the device. For more information, see “Appendix – LED Indicator Table”.
2.	Sensor Plank	Place your finger here to enroll your fingerprint and unlock the hidden partition in which your personal data are stored. For more information, see “3. Enrolling Fingerprints” and “5.2 Accessing the Hidden Partition”.
3.	Strap Hole	Install a strap which allows you to carry the device with you.

1.2 System Partition

Apacer AH650 comprises public and hidden partitions. The public partition is accessible when the device is plugged into a USB port on any computer, while the hidden partition only appears when the fingerprint in question is authenticated.

AH650 reserves a comprehensively large percentage of the storage spaces for the hidden partition, allowing you to take the most advantage of the fingerprint flash drive for the protection of your personal data and confidential documents. For more information, please see “5. Accessing Files”.

1.3 Safety Instructions

- When not in use, the sensor shall be protected with a covering to avoid dust ingress.
- Prevent metal or other hard, sharp objects from scratching the surface of the sensor.
- Keep the sensor dry and clean. Do not wipe or clean the sensor plank with any alcoholic solution. Gently clean with any soft tissue or cloth.

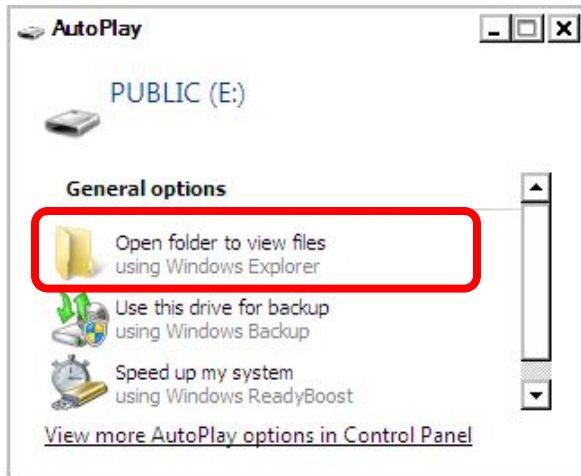
2. Running the Fingerprint Management Application

When using AH650 for the first time, please run a built-in fingerprint enrolling and management application that comes with your device on your computer. This application is designed to enroll fingerprints, manage users whose fingerprints are registered, and prevent your personal data from getting hacked and misused for illegitimate purposes by authenticating the identity of the login user with the enrolled fingerprints.







Before enjoying the benefits of this product, please follow the steps below to run the application.

To run the fingerprint management application on your computer:

1. Attach AH650 to an available USB port on your computer and the device should be recognized automatically.
2. In the window that appears, click “Open folder to view files”.



Then double click the app icon to run the application.

Name	Date modified	Type	Size
 Apacer Fingerprint	11/2/2015 2:36 PM	Application	3,396 KB
 FtrToPoints.dll	2/2/2015 11:23 AM	Application extens...	32 KB
 IS.dll	2/2/2015 11:23 AM	Application extens...	164 KB
 msxmB.dll	6/22/2015 12:29 PM	Application extens...	1,208 KB
 SynoAPIEx.dll	10/15/2015 12:30 ...	Application extens...	64 KB
 unistring.sa	10/27/2015 6:28 PM	SA File	6 KB



3. Follow the steps given in “3. Enrolling Fingerprints” to start using the device.

3. Enrolling Fingerprints

Every time you want to enroll fingerprints or manage fingerprints that have already been registered, please run the fingerprint management application.


This chapter explains how to register fingerprints for administrators and users.

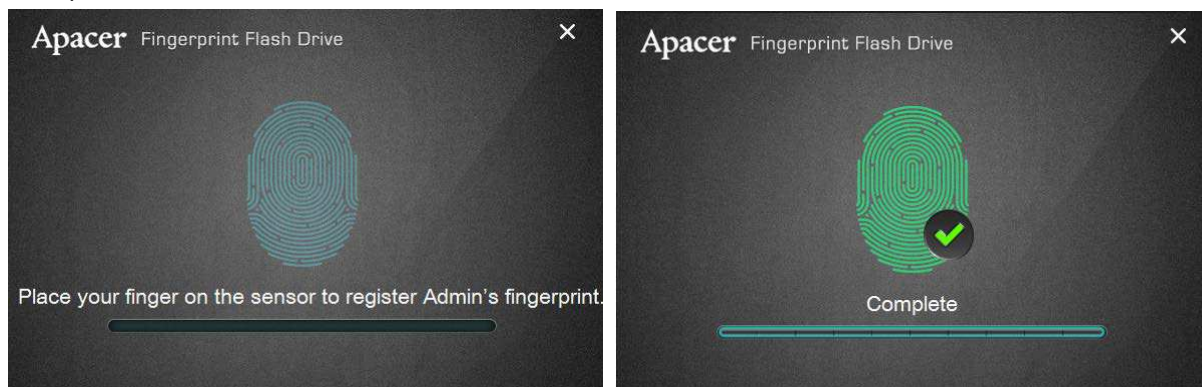
3.1 Enrolling Fingerprints for Administrators

AH650 can save up to 10 fingerprints: 2 for administrators (indicated by ) , 8 for users (indicated by ). When using the device for the first time, you will be required to register fingerprints for two users with administrative permission, i.e. Admin. Only when the registration of administrators' fingerprint is complete, you as administrator can create accounts and enroll fingerprints for general users.

Note: Enrolling administrator's fingerprints upon first use is only supported on Windows XP and later. The device cannot be used under other environments, such as Mac and Linux, until the enrollment for administrators is completed.

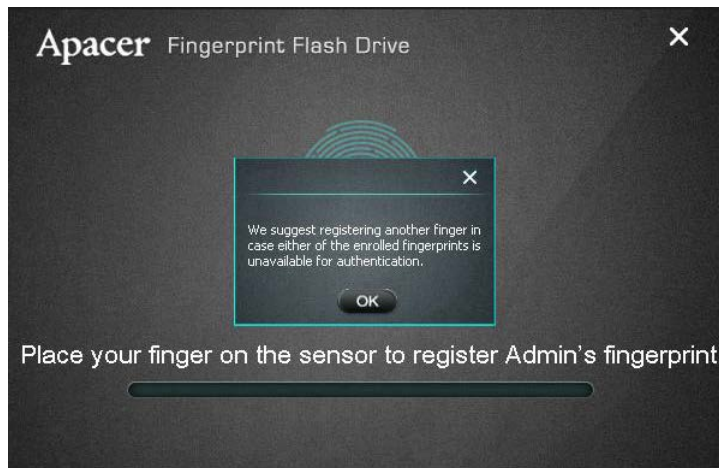
To enroll fingerprints for administrators:

1. Double click  to launch the application.
2. Place your finger on the sensor plank with light and even pressure. We suggest you slightly change the angle of your finger for every attempt, allowing the system to store fingerprints of the pad, both sides, and tip of your finger. Repeat the step for 10 times until the scan of your fingerprint is completed.



Note: Your fingerprint may not be read by the device if your finger is too dry. If the problem occurs, dampen your finger with wet cloth and try again.

3. As a precaution, you will be compulsorily asked to enroll one more finger for administrator so that if either of the fingers becomes unavailable for authentication, you will have an alternative finger to use. Click **OK** to continue.



4. Enter your administrator name in the name field, or alternatively, you may leave it as it is.




Note: Once administrators' fingerprints are enrolled, their accounts cannot be deleted. If you wish to change the identity of any administrator, see "4. Managing Administrator and User Accounts".

3.2 Enrolling Fingerprints for Users

After registering administrator's fingerprints upon first use of the device, you as administrator can add fingerprints for at most 8 users without administrative privileges.

To enroll fingerprints for users:

1. Double click  to launch the application.
2. Log in with the administrator's fingerprint by placing your finger on the sensor plank.




Depending on whether your fingerprint is authenticated, either of the following will appear:

- Fingerprint successfully authenticated. Continue to Step 3 to create user accounts.



- Authentication failed. Please make sure that your finger is not too dry or your fingerprint may not be successfully read by the device, and that you have placed the right finger whose fingerprints were enrolled previously. If the problem persists, please contact Apacer's [Technical Support](#) for assistance.



3. Click  to create users. Follow the same steps as those for creating administrator accounts to complete the process.



4. Managing Administrator and User Accounts

After creating administrator and user accounts, you may wish to modify their access permission in order to keep sensitive data secure and away from potential malicious users. In case of this, the built-in application allows you to change, delete, and edit with ease.



This chapter explains how to change, delete, and edit the existing accounts.

4.1 Changing Administrator Accounts

Administrators' fingerprints which have been registered can be erased, but the administrative accounts cannot be removed once created.

If you want to change the identity of either of the existing administrators, the only solution is to replace his fingerprint with others'.

To change administrator accounts:

1. Double click  to launch the application.
2. Log in with the administrator's fingerprint by placing your finger on the sensor plank.
3. Click  to the right of the administrator(s) whose fingerprints you wish to replace.





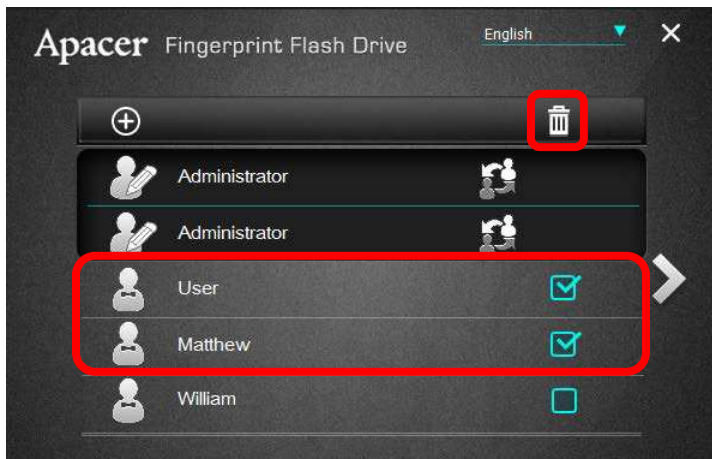
4. Follow Step 2 described in “3.1 Enrolling Fingerprints for Administrators” to complete the enrolling process.

4.2 Deleting User Accounts

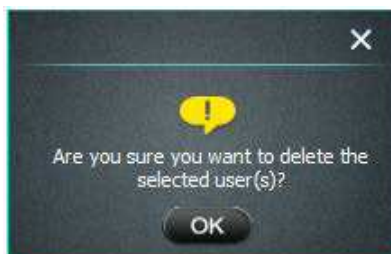
For users without administrative permission, you as administrator can delete their accounts whenever necessary.

To delete user accounts:

1. Double click  to launch the application.
2. Log in with the administrator's fingerprint by placing your finger on the sensor plank.
3. Tick the checkbox(es) to the right of the user(s) whose fingerprints you wish to delete, and then click .




4. A prompt will appear asking whether you would like to delete the selected users. Click **OK** to confirm the deletion.



4.3 Editing Account Information

Account information can only be edited by administrators.

To edit account information:

1. Double click  to launch the application.
2. Log in with the administrator's fingerprint by placing your finger on the sensor plank.
3. In the name field, edit the username of the account you wish to change.



5. Accessing Files

When administrators' fingerprints are registered the first time AH650 is used (the procedures described in "3.1 Enrolling Fingerprints for Administrators" are completed), you will notice the device is divided into two partitions. One is the public partition, indicated as PUBLIC by the system. The other is the fingerprint-secured partition, indicated as SECURE by the system.

The public partition is visible to anyone when the device is inserted into a USB port. However, the fingerprint-secured, hidden partition reserved to store protected files is only accessible when the user's fingerprint is authenticated.

5.1 Accessing the Public Partition

Simply plug in the device to an available USB port on your computer, and click "Open folder to view files". You will see a disk named "PUBLIC", which is the public partition.

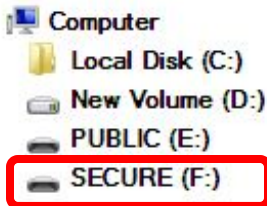


5.2 Accessing the Hidden Partition

Every time you want to open the fingerprint-secured partition, you have to authenticate your fingerprint so as to gain access to the hidden partition.

To access the hidden partition:

Place your finger on the sensor plank. The hidden partition "SECURE" will appear in a few seconds after the fingerprint is verified.



Appendix – LED Indicator Table

Color	Status	Description
Blue	Static	Matched fingerprint.
		Hidden partition unlocked.
	Blinking	Hidden partition locked.
Red	Blinking (one time)	Unmatched fingerprint.
Red/Blue	Blinking	No fingerprint enrolled yet.

Apacer

Access the best

Global Presence

Taiwan (Headquarters)

Apacer Technology Inc.
1F., No.32, Zhongcheng Rd., Tucheng Dist.,
New Taipei City 236, Taiwan R.O.C.
Tel: 886-2-2267-8000
Fax: 886-2-2267-2261
amtsales@apacer.com

Europe

Apacer Technology B.V.
Science Park Eindhoven 5051 5692 EB Son,
The Netherlands
Tel: 31-40-267-0000
Fax: 31-40-267-0000#6199
sales@apacer.nl

U.S.A.

Apacer Memory America, Inc.
46732 Lakeview Blvd., Fremont, CA 94538
Tel: 1-408-518-8699
Fax: 1-510-249-9568
sa@apacerus.com

China

Apacer Electronic (Shanghai) Co., Ltd
Room D, 22/FL, No.2, Lane 600, Jieyun Plaza,
Tianshan RD, Shanghai, 200051, China
Tel: 86-21-6228-9939
Fax: 86-21-6228-9936
sales@apacer.com.cn

Japan

Apacer Technology Corp.
5F, Matsura Bldg., Shiba, Minato-Ku
Tokyo, 105-0014, Japan
Tel: 81-3-5419-2668
Fax: 81-3-5419-0018
jpservices@apacer.com

India

Apacer Technologies Pvt Ltd,
Unit No.201, "Brigade Corner",
7th Block Jayanagar,
Yediyur Circle, Bangalore – 560082, India
Tel: 91-80-4152-9061
Fax: 91-80-4170-0215
sales_india@apacer.com