



Chipsmall Limited consists of a professional team with an average of over 10 year of expertise in the distribution of electronic components. Based in Hongkong, we have already established firm and mutual-benefit business relationships with customers from,Europe,America and south Asia,supplying obsolete and hard-to-find components to meet their specific needs.

With the principle of “Quality Parts,Customers Priority,Honest Operation,and Considerate Service”,our business mainly focus on the distribution of electronic components. Line cards we deal with include Microchip,ALPS,ROHM,Xilinx,Pulse,ON,Everlight and Freescale. Main products comprise IC,Modules,Potentiometer,IC Socket,Relay,Connector.Our parts cover such applications as commercial,industrial, and automotives areas.

We are looking forward to setting up business relationship with you and hope to provide you with the best service and solution. Let us make a better world for our industry!



Contact us

Tel: +86-755-8981 8866 Fax: +86-755-8427 6832

Email & Skype: info@chipsmall.com Web: www.chipsmall.com

Address: A1208, Overseas Decoration Building, #122 Zhenhua RD., Futian, Shenzhen, China



1

2

3

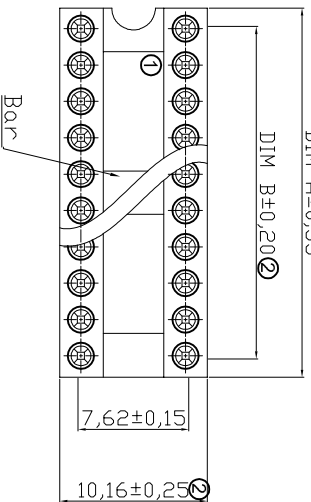
4

5

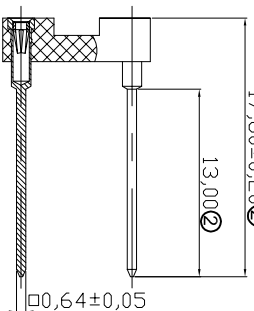
6

7

A

DIM A \pm 0.35DIM B \pm 0.2017.80 \pm 0.20

13.00

**NOTES:****MATERIAL**

- 1.Pin(outer sleeve): Brass, machined CuZn38Pb2
- ② 2.Clip(contact 4 finger): Beryllium copper, heat treated
- 3.Plating(outer sleeve): 2um/80u"nickel, 5um/200u"Tin
- 4.Plating(contact): 2um/80u"nickel, Gold flash
- 5.Insulator Material: Glass filled PBT, UL94V-0 Black

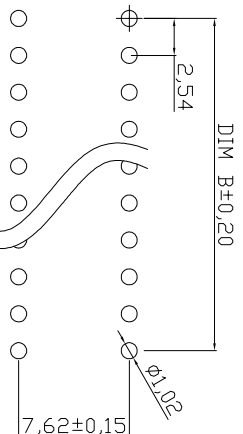
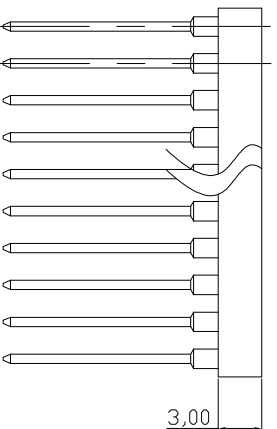
ELECTRICAL

- 1.Current Rating: 3Amps/contact max.
- 2.Contact Resistance: 4mΩ/contact max.
- ② 3.Insulation Resistance: 1000MΩ min. at V=100V
- ② 4.Operating Voltage: 60VAC/DC

MECHANICAL

- 1.Average Insertion force with steel pin of ϕ 0.43mm/0.017"; <250g
- 2.Average Withdrawal force with steel pin of ϕ 0.43mm/0.017"; >50g min.
- 3.Mechanical life cycle: 200 min.
- 4.Operation Temperature: -40°C to +105°C
- 5.Soldering temperature: +220°C, 10s max.

Packing: Tube



Contact	DIM A	DIM B	Note
6	7.62	5.08	
8	10.16	7.62	
10	12.70	10.16	W/O Bar
14	17.78	15.24	
16	20.32	17.78	
18	22.86	20.32	
① 20	25.40	22.86	W Bar

RoHS compliant

Unit: mm

Scale	Free TOLERANCE	Free TOL	Id.	Modification	Date	Name
X.	\pm 0.50					
X.X	\pm 0.30					
X.XX	\pm 0.20		②	Update to new drawing	28.10.2016	Amy
X.XXX	\pm 0.10		①	Update	30.10.2014	Amy
DIM	\pm 0.10		①	Drawn	17.02.2014	Amy
Angle	\pm 5°					
Angle	TOL					

Customer-No.

ASSMANN WSW-No.

AR xx-HZW/TTN

Drawing-No.

ASS 6290 CO

rev02

Replace

ASS 3577 CO
ASS 3578 CO

Sheet

G

G

H

H

1

2

3

4

5

6

7

 WSW components