



Chipsmall Limited consists of a professional team with an average of over 10 year of expertise in the distribution of electronic components. Based in Hongkong, we have already established firm and mutual-benefit business relationships with customers from,Europe,America and south Asia,supplying obsolete and hard-to-find components to meet their specific needs.

With the principle of "Quality Parts,Customers Priority,Honest Operation,and Considerate Service",our business mainly focus on the distribution of electronic components. Line cards we deal with include Microchip,ALPS,ROHM,Xilinx,Pulse,ON,Everlight and Freescale. Main products comprise IC,Modules,Potentiometer,IC Socket,Relay,Connector.Our parts cover such applications as commercial,industrial, and automotives areas.

We are looking forward to setting up business relationship with you and hope to provide you with the best service and solution. Let us make a better world for our industry!



Contact us

Tel: +86-755-8981 8866 Fax: +86-755-8427 6832

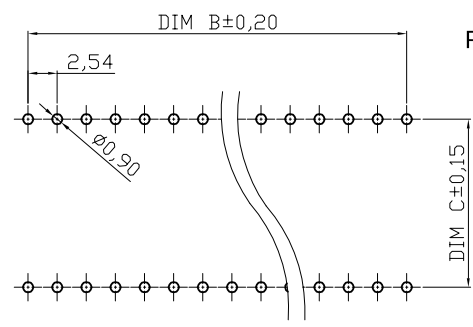
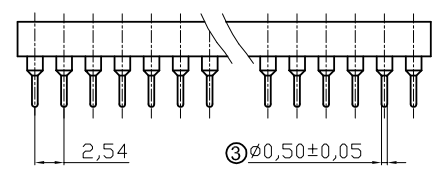
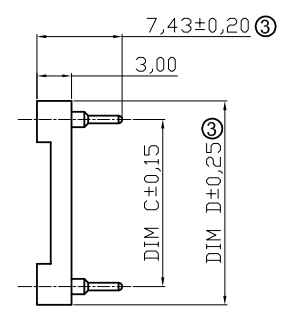
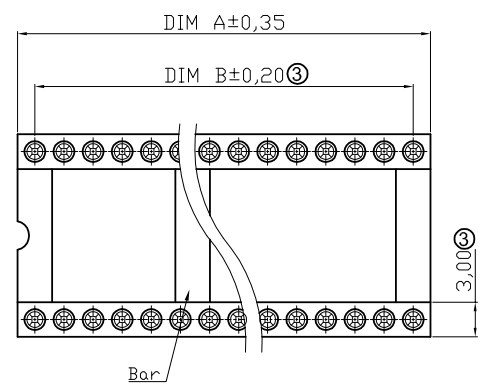
Email & Skype: info@chipsmall.com Web: www.chipsmall.com

Address: A1208, Overseas Decoration Building, #122 Zhenhua RD., Futian, Shenzhen, China



A
B
C
D
E
F
G
H

A
B
C
D
E
F
G
H



NOTES:

MATERIAL

- 1.Pin(outer sleeve): Brass, machined CuZn38Pb2
- ② 2.Clip(contact 4 finger): Beryllium copper, heat treated
- 3.Plating(outer sleeve): HZL: 2um/80u"nickel, 5um/200u"Tin
HGL: 2um/80u"nickel, Gold flash
- 4.Plating(contact): 2um/80u"nickel, Gold flash or 10u", 30u" Gold
- 5.Insulator Material: Glass filled PBT, UL94V-0 Black

ELECTRICAL

- 1.Current Rating: 3Amps/contact max.
- 2.Contact Resistance: 4mΩ/contact max.
- ③ 3.Insulation Resistance: 1000MΩ min. at V=100V
- ③ 4.Operating Voltage: 60VAC/DC

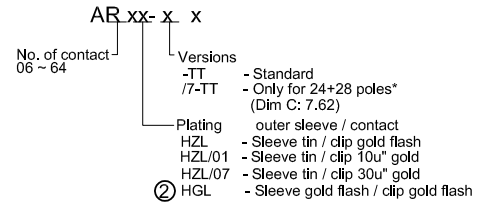
MECHANICAL

- 1.Average Insertion force with steel pin of $\varnothing 0.43\text{mm}/0.017''$: <math>< 250\text{g}</math>
- 2.Average Withdrawal force with steel pin of $\varnothing 0.43\text{mm}/0.017''$: >50g min.
- 3.Mechanical life cycle: 200 min.
- 4.Operation Temperature: -40°C to +105°C
- 5.Soldering temperature: +220°C, 10s max.

Packing: Tube

Contact	Dim A	Dim B	Dim C	Dim D	Note③
06	7.62	5.08	7.62	10.16	w/o bar
08	10.16	7.62	7.62	10.16	
10	12.70	10.16	7.62	10.16	
14	17.78	15.24	7.62	10.16	
16	20.32	17.78	7.62	10.16	with bar
18	22.86	20.32	7.62	10.16	
20	25.40	22.86	7.62	10.16	
22	27.94	25.40	10.16	12.70	
24*	30.48	27.94	7.62	10.16	
24	30.48	27.94	15.24	17.78	
28*	35.56	33.02	7.62	10.16	
28	35.56	33.02	15.24	17.78	
32	40.64	38.10	15.24	17.78	

Order Code:

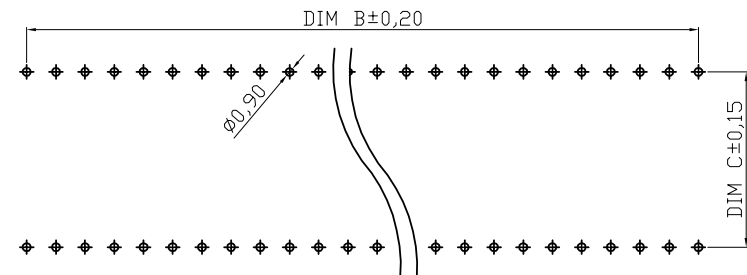
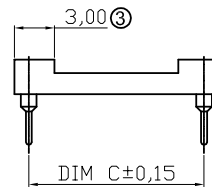
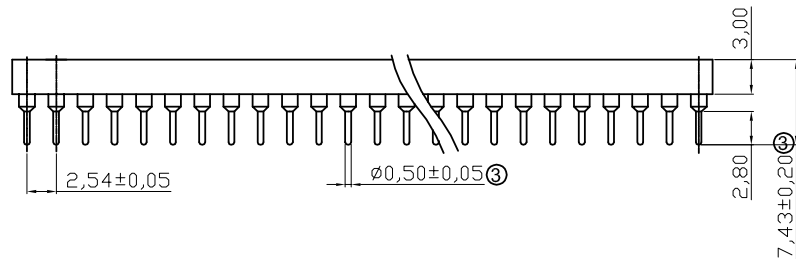
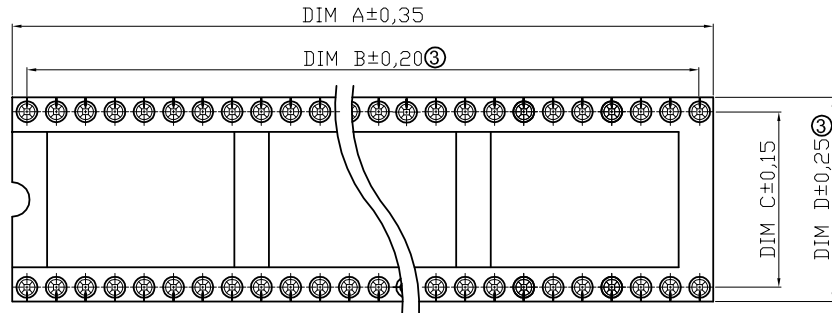


PCB LAYOUT

RoHS compliant
Unit:mm

Scale	Free					Date	Name	Customer-No.
TOLERANCE						Drawn	23.07.2012	Lucas
X.	±0.50							
X.X	±0.30	③	Update to new drawing	28.10.2016	Amy	Approved	28.10.2016	Amy
X.XX	±0.20	②	Add "HGL"-Version,corrected P/N code	28.01.2014	A. Plate			
X.XXX	±0.10	①	Add sheet 2	16.08.2012	Lucas			
DIM	TOL	①	Drawn	23.07.2012	Lucas			
Angle	±5°	①						
Angle	TOL	Id.	Modification	Date	Name			

Customer-No.		AR xx-x x	
ASSMANN WSW-No.			
Drawing-No.		ASS 4852 CO	
Replace		rev03	
		Sheet 1 / 2	



PCB LAYOUT

NOTES:

MATERIAL

- 1.Pin(outer sleeve): Brass, machined CuZn38Pb2
- ② 2.Clip(contact 4 finger): Beryllium copper, heat treated
- 3.Plating(outer sleeve): HZL: 2um/80u"nickel, 5um/200u"Tin
HGL: 2um/80u"nickel, Gold flash
- 4.Plating(contact): 2um/80u"nickel, Gold flash or 10u", 30u" Gold
- 5.Insulator Material: Glass filled PBT, UL94V-0 Black

ELECTRICAL

- 1.Current Rating: 3Amps/contact max.
- 2.Contact Resistance: 4mΩ/contact max.
- ③ 3.Insulation Resistance: 1000MΩ min. at V=100V
- ④ 4.Operating Voltage: 60VAC/DC

MECHANICAL


- 1.Average Insertion force with steel pin of $\phi 0.43\text{mm}/0.017\text{"}$: <250g
- 2.Average Withdrawal force with steel pin of $\phi 0.43\text{mm}/0.017\text{"}$: >50g min.
- 3.Mechanical life cycle: 200 min.
- 4.Operation Temperature: -40°C to +105°C
- 5.Soldering temperature: +220°C, 10s max.

Packing: Tube

Contact	Dim A	Dim B	Dim C	Dim D
36	45.72	43.18	15.24	17.78
40	50.80	48.26	15.24	17.78
42	53.34	50.80	15.24	17.78
48	60.96	58.42	15.24	17.78
50	63.50	60.96	15.24	17.78
52	66.04	63.50	15.24	17.78
50	63.50	60.96	22.86	25.40
52	66.04	63.50	22.86	25.40
64	81.28	78.74	22.86	25.40

RoHS compliant

Unit:mm

Scale	Free					Date	Name	Customer-No.
TOLERANCE						Drawn	23.07.2012	Lucas
X.	±0.50							
X.X	±0.30	③	Update to new drawing	28.10.2016	Amy	Approved	28.10.2016	Amy
X.XX	±0.20	②	Add "HGL"-Version,corrected P/N code	28.01.2014	A. Plate			
X.XXX	±0.10	①	Add sheet 2	16.08.2012	Lucas			
DIM	TOL	①	Drawn	23.07.2012	Lucas			
Angle	±5°	①						
Angle	TOL	Id.	Modification	Date	Name			

Customer-No.		AR xx-x x	
ASSMANN WSW-No.			
Drawing-No.		ASS 4852 CO	rev03
Replace	Sheet	2 / 2	

1

2

3

4

5

6

7

A

B

C

D

E

F

G

H

A

B

C

D

E

F

G

H

1

2

3

4

5

6

7