



Chipsmall Limited consists of a professional team with an average of over 10 year of expertise in the distribution of electronic components. Based in Hongkong, we have already established firm and mutual-benefit business relationships with customers from,Europe,America and south Asia,supplying obsolete and hard-to-find components to meet their specific needs.

With the principle of “Quality Parts,Customers Priority,Honest Operation,and Considerate Service”,our business mainly focus on the distribution of electronic components. Line cards we deal with include Microchip,ALPS,ROHM,Xilinx,Pulse,ON,Everlight and Freescale. Main products comprise IC,Modules,Potentiometer,IC Socket,Relay,Connector.Our parts cover such applications as commercial,industrial, and automotives areas.

We are looking forward to setting up business relationship with you and hope to provide you with the best service and solution. Let us make a better world for our industry!



## Contact us

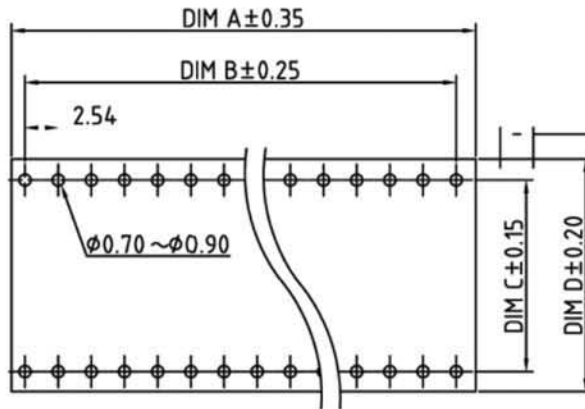
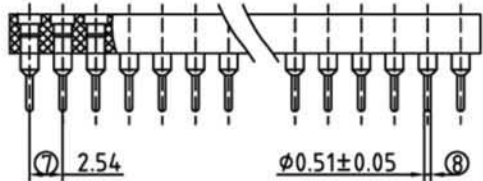
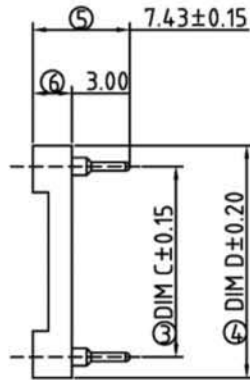
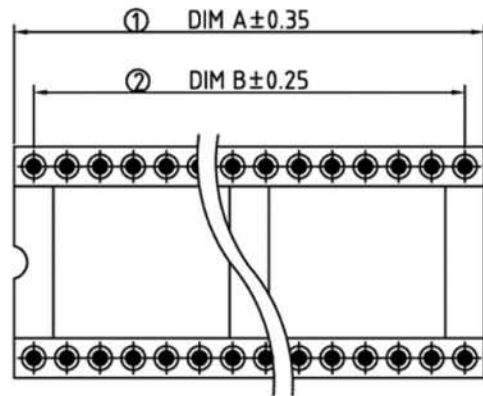
Tel: +86-755-8981 8866 Fax: +86-755-8427 6832

Email & Skype: info@chipsmall.com Web: www.chipsmall.com

Address: A1208, Overseas Decoration Building, #122 Zhenhua RD., Futian, Shenzhen, China







P.C.B. LAYOUT

Contact	Dim A	Dim B	Dim C	Dim D
6	7.62	5.08	7.62	10.16
8	10.16	7.62	7.62	10.16
10	12.70	10.16	7.62	10.16
14	17.78	15.24	7.62	10.16
16	20.32	17.78	7.62	10.16
18	22.86	20.32	7.62	10.16
20	25.40	22.86	7.62	10.16
24*	30.48	27.94	7.62	10.16
28*	35.56	33.02	7.62	10.16

Contact	Dim A	Dim B	Dim C	Dim D
24	30.48	27.94	15.24	17.78
28	35.56	33.02	15.24	17.78
32	40.64	38.10	15.24	17.78
36	45.72	43.18	15.24	17.78
40	50.80	48.26	15.24	17.78
42	53.34	50.80	15.24	17.78
48	60.96	58.42	15.24	17.78
50	63.50	60.96	15.24	17.78
52	66.04	63.50	15.24	17.78
50	63.50	60.96	22.86	25.40
52	66.04	63.50	22.86	25.40
64	81.28	78.74	22.86	25.40

SIGN	DATE	DESCRIPTION	APPROVER
Δ		THIS IS CAD DRAWING, DO NOT REVISE MANUALLY!!!	

**Technical Data**

- Material:
  - Pin (outer sleeve): Brass, machined, CuZn38Pb2
  - Clip(contact 4 finger): Beryllium copper, heat treated or PHBZ
  - Plating(outer sleeve): Tin plated: 2um/80u"nickel, 5um/200u" Tin  
Gold plated: 2um/80u"nickel, full gold
- Plating clip(contact): 2um/80 u"nickel, gold or tin plating
- Insulator body(black): Glass filled thermoplastic polyester UL94V-0
- Electrical
  - Current rating: 3 Amps/contact max.
  - Contact resistance: ≤4mΩ/contact
  - Insulation resistance: ≥10000MΩat 500VAC
  - Rated voltage: 100 VRMS /150VDC
- Mechanical
  - Operating temperature: Gold plated: -55° C to +125° C  
(Continuous) -67° F to +105° F  
Tin plated: -40° C to +105° C

Average insertion force with steel pin of φG0.43mm/0.017" < 250g  
 Average withdrawal force with steel pin of φG0.43mm/0.017" > 50g  
 Mechanical life: min.200

- Applications and features:
  - The open frame is most common type.
  - The open body design gives better access (for cleaning and inspections) to air -cooling.
  - Side and end stackable.
  - High retention design prevents IC walkout during heavy vibration.
  - Closed bottom sleeve for 100% anti-wicking of solder.
  - Twist free construction.
- Environmental data
  - Solderability (IEC 60068-2-20. Ta): 235° C, 2s
  - Resistance to soldering heat (IEC 60068-2-20. Tb):  
-Through hole mount components: 260° C, 10s

ARXX-X/X-TT-R

**Versions:**  
 - : standard  
 \* /7 : only for 24+28-poles (Dim C: 7.62)

**Plating solder pin:**  
 HGL : FULL GOLD  
 HZL : TIN  
 HZL/07 : TIN/Clip 30u" Gold  
 HZL/01 : TIN/Clip 10u" Gold

**No. of contacts:**  
 06, 08, 10, 14, 16, 18, 20, 24, 28, 32, 40, 64

**ASSMANN**  
 Electronics, Inc.

**CUSTOMER COPY**

ALL RIGHTS RESERVED. REPRODUCTION OR ISSUE TO THIRD PARTIES IN ANY FORM WHATSOEVER IS NOT PERMITTED WITHOUT WRITTEN AUTHORITY FROM THE PROPRIETOR. PROPERTY OF ANYTECH TECHNOLOGY CO., LTD

TITLE		IC/SKT SA7.43 mML finished products series (Open frame)		
PART NO.	<b>ARXX-X/X-TT-R</b>	DWG NO.	8SA0001	
APPROVED	CHECKED	DESIGNED	DRAWN	CUST NO.
		Aaron 2005.08.01	Aaron 2005.08.01	
				Tolerance
				X. ±0.50
				X.X ±0.30
				X.XX ±0.10
				X* ±1*
SHEET: 01/01		UNIT: mm		SCALE: NONE
		REV.: B		