



Chipsmall Limited consists of a professional team with an average of over 10 year of expertise in the distribution of electronic components. Based in Hongkong, we have already established firm and mutual-benefit business relationships with customers from,Europe,America and south Asia,supplying obsolete and hard-to-find components to meet their specific needs.

With the principle of “Quality Parts,Customers Priority,Honest Operation,and Considerate Service”,our business mainly focus on the distribution of electronic components. Line cards we deal with include Microchip,ALPS,ROHM,Xilinx,Pulse,ON,Everlight and Freescale. Main products comprise IC,Modules,Potentiometer,IC Socket,Relay,Connector.Our parts cover such applications as commercial,industrial, and automotives areas.

We are looking forward to setting up business relationship with you and hope to provide you with the best service and solution. Let us make a better world for our industry!



Contact us

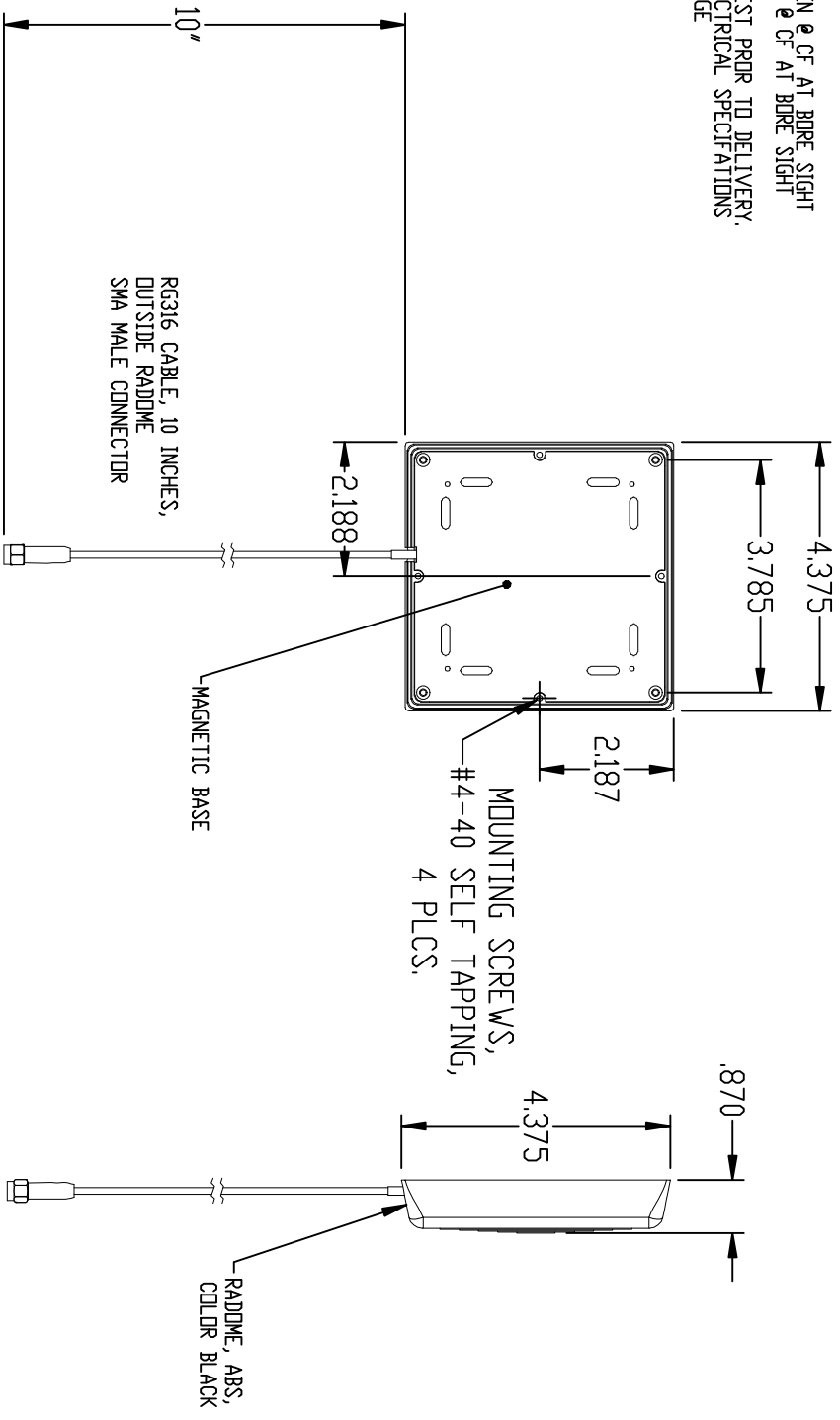
Tel: +86-755-8981 8866 Fax: +86-755-8427 6832

Email & Skype: info@chipsmall.com Web: www.chipsmall.com

Address: A1208, Overseas Decoration Building, #122 Zhenhua RD., Futian, Shenzhen, China



- NOTES:
 1. ELECTRICAL SPECIFICATIONS:
 CENTER FREQUENCY = 868 ±4 MHz
 POLARIZATION: LHCP
 3:1 VSWR B.W. = 30 MHz
 GAIN SHALL BE 3dBIC MIN @ CF AT BORE SIGHT
 A/R SHALL BE 6dB MAX. @ CF AT BORE SIGHT
 ZIN = 50 OHMS
 2. 100% ELECTRICAL TEST PROR TO DELIVERY.
 3. FIDELITY PRINT AND ELECTRICAL SPECIFICATIONS
 ARE SUBJECT TO CHANGE



UNLESS OTHERWISE SPECIFIED DIMENSIONS ARE IN INCHES		TOLERANCES UNLESS OTHERWISE SPECIFIED		FAIRVIEW PENNSYLVANIA 1000 PPSMA ASSEMBLY, SW316
DO NOT SCALE THIRD ANGLE PROJECTION	UNLESS OTHERWISE SPECIFIED DIMENSIONS ARE IN INCHES	DIM. 1 & X [XXX] DIM. 2 & .040 DIM. 3 & .005 ANGLES & 0° 30'	DIM. 1 & X [XXX] DIM. 2 & .040 DIM. 3 & .005 ANGLES & 0° 30'	
8 CHANGE NOTICE	CN 54907-ENG	CODE IDENT. NO. QLSR2	DATE 6-23-10 ENGR. Chareson	SHEET 1 of 1
Quality Products From The Specialists In Electro-Magnetic Compatibility				