



Chipsmall Limited consists of a professional team with an average of over 10 year of expertise in the distribution of electronic components. Based in Hongkong, we have already established firm and mutual-benefit business relationships with customers from,Europe,America and south Asia,supplying obsolete and hard-to-find components to meet their specific needs.

With the principle of "Quality Parts,Customers Priority,Honest Operation,and Considerate Service",our business mainly focus on the distribution of electronic components. Line cards we deal with include Microchip,ALPS,ROHM,Xilinx,Pulse,ON,Everlight and Freescale. Main products comprise IC,Modules,Potentiometer,IC Socket,Relay,Connector.Our parts cover such applications as commercial,industrial, and automotives areas.

We are looking forward to setting up business relationship with you and hope to provide you with the best service and solution. Let us make a better world for our industry!



Contact us

Tel: +86-755-8981 8866 Fax: +86-755-8427 6832

Email & Skype: info@chipsmall.com Web: www.chipsmall.com

Address: A1208, Overseas Decoration Building, #122 Zhenhua RD., Futian, Shenzhen, China



REVISIONS		
LTR	DESCRIPTION	DATE
C1	REDRAWN ON CAD PER ECO-11-013071	06/24/2011

NOTES:

- ALL DIMENSIONS ARE IN $\frac{\text{Inches}}{\text{[Millimeters]}}$
- DIMENSIONS APPEARING IN THE TABLE ARE AS FOLLOWS
 - AS SUPPLIED
 - AFTER UNRESTRICTED RECOVERY
- COATING IS OPTIONAL. AS SUPPLIED DIMENSIONS APPEARING IN THE TABLE ARE FOR UNCOATED PARTS. WHEN COATING IS ADDED ENTRY DIAMETERS WILL BE REDUCED BY .06 MAX.
- THIS PART FITS MS 24523 SWITCH OR EQUIVALENT SHAPED BAT HANDLED SWITCH.
- STANDARD COLOR IS GREY OTHER COLORS ARE AVAILABLE UPON REQUEST.

ORDERING INFORMATION

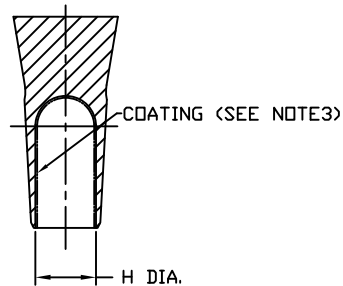
102A994 - X - XX / XX

BASE PART NUMBER

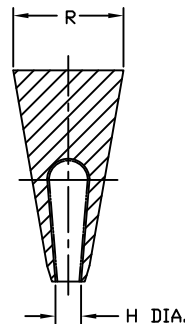
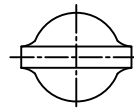
MATERIAL DASH NUMBER
(SEE COMPATIBILITY CHART)

MODIFICATION NUMBER
(IF NECESSARY, SEE FRONT OF SCD BINDER
FOR COMPLETE LIST OF MODIFICATION LIST)

ADHESIVE SLASH NUMBER
(IF NECESSARY SEE COMPATIBILITY CHART)



AS SUPPLIED



AFTER UNRESTRICTED RECOVERY

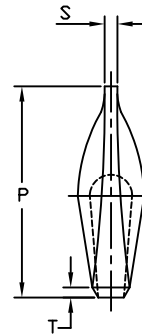


TABLE OF DIMENSIONS

PART NUMBER	H		P ±10% b	R ±10% b	S ±20% b	T ±20% b	WEIGHT NOM
	MIN a	MAX b					
102A994	.29 [7.4]	.18 [4.6]	.88 [22.4]	.46 [11.7]	.07 [1.78]	.07 [1.78]	.004 [2.0]

COMPATIBILITY CHART

MATERIAL DASH NO.	MATERIAL DESCRIPTION	RT SPEC	COATING SLASH NO.	COATING S NO.	COATING DESCRIPTION
-3	POLYOLEFIN, SEMI RIGID	RT-301	/42	S-1017	ADHESIVE

Raychem Molded Parts
CUSTOMER DRAWING

STE TE Connectivity

UNLESS OTHERWISE SPECIFIED DIMENSIONS ARE INCHES. METRIC DIMENSIONS ARE IN BRACKETS. DECIMAL TOLERANCES .XXX ± 0.005 [0.13 mm] .XX ± 0.01 [0.25 mm] .X ± 0.1 [0.50 mm] ANGLE TOLERANCE .X ± 1 DEG.	DRAWN N.Chauhan 06/03/11	APPROVED D.Hurrell 06/03/11	TITLE SWITCH COVER	
	RPN	CAD FILE: 102A994_CD	SIZE B	CODE IDENT. NO. 06090
THIRD ANGLE PROJECTION		DWG. NO. 102A994	SHEET 1 OF 1	

If this document is printed it becomes uncontrolled. Check for the latest revision

© 2011 Tyco Electronics Corporation. All rights reserved.

DO NOT SCALE THIS DRAWING