



Chipsmall Limited consists of a professional team with an average of over 10 year of expertise in the distribution of electronic components. Based in Hongkong, we have already established firm and mutual-benefit business relationships with customers from,Europe,America and south Asia,supplying obsolete and hard-to-find components to meet their specific needs.

With the principle of “Quality Parts,Customers Priority,Honest Operation,and Considerate Service”,our business mainly focus on the distribution of electronic components. Line cards we deal with include Microchip,ALPS,ROHM,Xilinx,Pulse,ON,Everlight and Freescale. Main products comprise IC,Modules,Potentiometer,IC Socket,Relay,Connector.Our parts cover such applications as commercial,industrial, and automotives areas.

We are looking forward to setting up business relationship with you and hope to provide you with the best service and solution. Let us make a better world for our industry!



Contact us

Tel: +86-755-8981 8866 Fax: +86-755-8427 6832

Email & Skype: info@chipsmall.com Web: www.chipsmall.com

Address: A1208, Overseas Decoration Building, #122 Zhenhua RD., Futian, Shenzhen, China



ANGULAR SERIES

SPRING TERMINAL BLOCKS

ANGULAR FEED-THROUGH

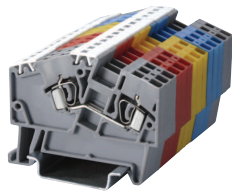
HIGHLIGHTS

FEATURES

- 45° Wire entry for easy installation
- 2.5mm to 8mm terminal blocks
- 22-8 AWG wire sizes
- 2, 3, and 4 Connection **Ground Terminals**
- Accessories

APPLICATIONS

- Panels with limited wiring space
- Vibration Applications
- Elevator Cabinets
- People Movers
- Transportation



Dimensions & Weight

Width	
Length	
Height w DIN Rail	35 x 7.5 mm 35 x 15 mm
Weight per piece	

2 Connection Feed-Through 2 Jumper Slots	5 mm
	54 mm
	44.0 mm 51.0 mm
	6.5 g

2 Connection Feed-Through 2 Jumper Slots	6 mm
	61.5 mm
	44.0 mm 51.0 mm
	9.0 g

2 Connection Feed-Through 2 Jumper Slots	8 mm
	74 mm
	49.3 mm 57.0 mm
	14.8 g

Technical Data/Ratings

Approvals		
Wire Size (solid / stranded)		
Voltage Rating		
Current Rating		
Insulation Material	Polyamide 66	

 E220514	 60947-7-1
22-12 AWG	0.34-2.5 mm ²
600 V	800V AC/DC
25 A	24 A
Polyamide 66	

 E220514	 60947-7-1
22-10 AWG	0.2-4 mm ²
600 V	800V AC/DC
35 A	32 A
Polyamide 66	

 E220514	 60947-7-1
22-8 AWG	0.2-6 mm ²
600 V	800V AC/DC
50 A	41 A
Polyamide 66	

Installation Instructions

Wire Stripping Length	
Screwdriver	

11 mm
Flat Head 0.5 x 3mm

15 mm
Flat Head 0.6 x 3.5 mm

15 mm
Flat Head 0.8 x 4 mm

Terminal Blocks

Grey (standard)		
Red R		
Blue BU		
Black BL		
Orange O		
Green G		
Yellow Y		
White W		

Cat. No.	Std. Pk.
AS2.5	100
AS2.5/R	100
AS2.5/BU	100
AS2.5/BL	100
AS2.5/O	100
AS2.5/G	100
AS2.5/Y	100
AS2.5/W	100

Cat. No.	Std. Pk.
AS4	100
AS4/R	100
AS4/BU	100
AS4/BL	100
AS4/O	100
AS4/G	100
AS4/Y	100
AS4/W	100

Cat. No.	Std. Pk.
AS6	50
AS6/R	50
AS6/BU	50
AS6/BL	50
AS6/O	50
AS6/G	50
AS6/Y	50
AS6/W	50

Accessories

End Plate		EPAS2.5	50
DIN Rail		2511120 CA701-15/S	20 20
End Stop		CA103 CA702 CA802	50 50 50
2 Pole Jumper		CA801/1	100
Jumpers Alternate		CA801/1-3	100
Push in wire jumper		CA901/1	100
Step Down Jumper	AS6 to AS4 AS6 to AS2.5 AS4 to AS2.5 AS6 to AS2.5	– CA901/5 CA901/6 CA801/8	– 100 100 100
Marking Tag		MT5	1 Pk. (100 tags)

Cat. No.	Std. Pk.
EPAS4	50
2511120 CA701-15/S	20 20
CA103 CA702 CA802	50 50 50
CA801/2	100
CA801/2-3	100
CA901/2	100
CA901/4 – CA901/6 –	100 – 100 –
MT6	1 Pk. (100 tags)

Cat. No.	Std. Pk.
EPAS6	50
2511120 CA701-15/S	20 20
CA103 CA702 CA802	50 50 50
CA801/3	100
CA801/3-3	100
CA901/3	100
CA901/4 – CA901/6 –	100 – 100 –
MT8	1 Pk. (100 tags)

Cat. No.	Std. Pk.
EPAS6	50
2511120 CA701-15/S	20 20
CA103 CA702 CA802	50 50 50
CA801/3	100
CA801/3-3	100
CA901/3	100
CA901/4 – CA901/6 –	100 – 100 –
MT8	1 Pk. (100 tags)