

Chipsmall Limited consists of a professional team with an average of over 10 year of expertise in the distribution of electronic components. Based in Hongkong, we have already established firm and mutual-benefit business relationships with customers from,Europe,America and south Asia,supplying obsolete and hard-to-find components to meet their specific needs.

With the principle of “Quality Parts,Customers Priority,Honest Operation,and Considerate Service”,our business mainly focus on the distribution of electronic components. Line cards we deal with include Microchip,ALPS,ROHM,Xilinx,Pulse,ON,Everlight and Freescale. Main products comprise IC,Modules,Potentiometer,IC Socket,Relay,Connector.Our parts cover such applications as commercial,industrial, and automotives areas.

We are looking forward to setting up business relationship with you and hope to provide you with the best service and solution. Let us make a better world for our industry!



Contact us

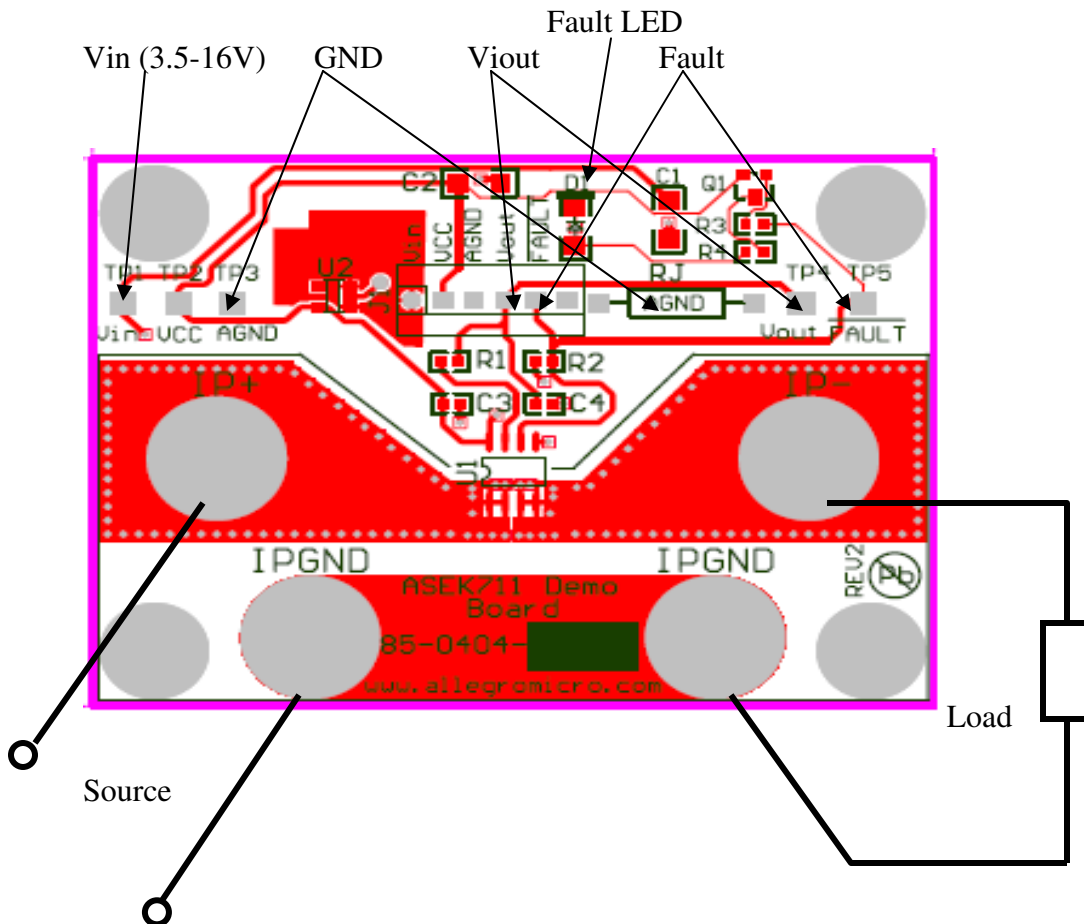
Tel: +86-755-8981 8866 Fax: +86-755-8427 6832

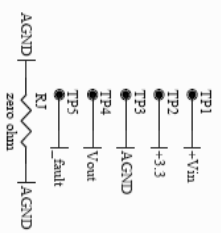
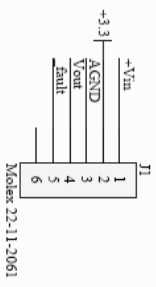
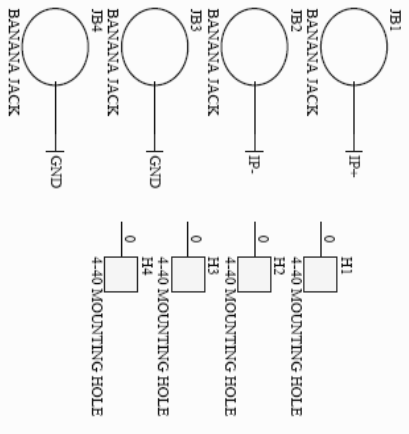
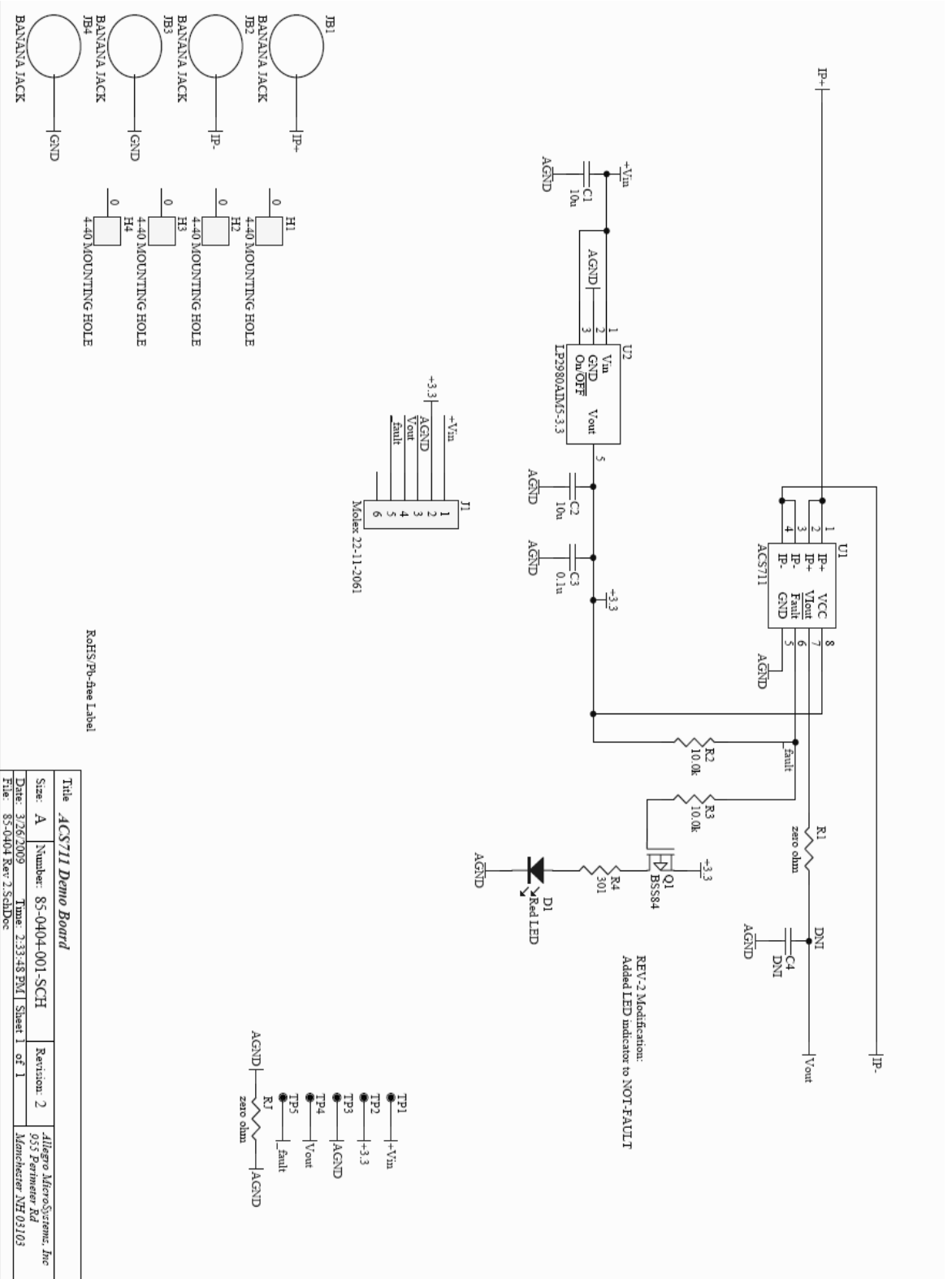
Email & Skype: info@chipsmall.com Web: www.chipsmall.com

Address: A1208, Overseas Decoration Building, #122 Zhenhua RD., Futian, Shenzhen, China

ACS711 Demo Board User Instructions

- The following picture is the top view of the demo board with explanations pointed to each test point hook up and socket pin, and the connection diagram in a typical application.
- On board 3.3V voltage regulator U2 input voltage (V_{in}) range: 3.5-16V.
- No external pull up resistor is needed for Fault pin as a 10k pull up resistor is already installed on board.
- Once the sensor faulted (Fault signal went low and Fault LED lights on) the only way to reset the fault is to reset Vcc.
- See ACS711 Data Sheet for detailed information. See next page for board schematic.





RoHS:Pb-Free Label

Title		ACS711 Demo Board	
Size: A	Number: 85-0404-001-SCH	Revision: 2	Allegro Microsystems, Inc 955 Perimeter Rd Mesa, AZ 85209
Date: 3/26/2009	Time: 2:33:48 PM	Sheet 1 of 1	
File: 85-0404 Rev. 2.SchDoc			