



Chipsmall Limited consists of a professional team with an average of over 10 year of expertise in the distribution of electronic components. Based in Hongkong, we have already established firm and mutual-benefit business relationships with customers from,Europe,America and south Asia,supplying obsolete and hard-to-find components to meet their specific needs.

With the principle of “Quality Parts,Customers Priority,Honest Operation,and Considerate Service”,our business mainly focus on the distribution of electronic components. Line cards we deal with include Microchip,ALPS,ROHM,Xilinx,Pulse,ON,Everlight and Freescale. Main products comprise IC,Modules,Potentiometer,IC Socket,Relay,Connector.Our parts cover such applications as commercial,industrial, and automotives areas.

We are looking forward to setting up business relationship with you and hope to provide you with the best service and solution. Let us make a better world for our industry!



## Contact us

Tel: +86-755-8981 8866 Fax: +86-755-8427 6832

Email & Skype: info@chipsmall.com Web: www.chipsmall.com

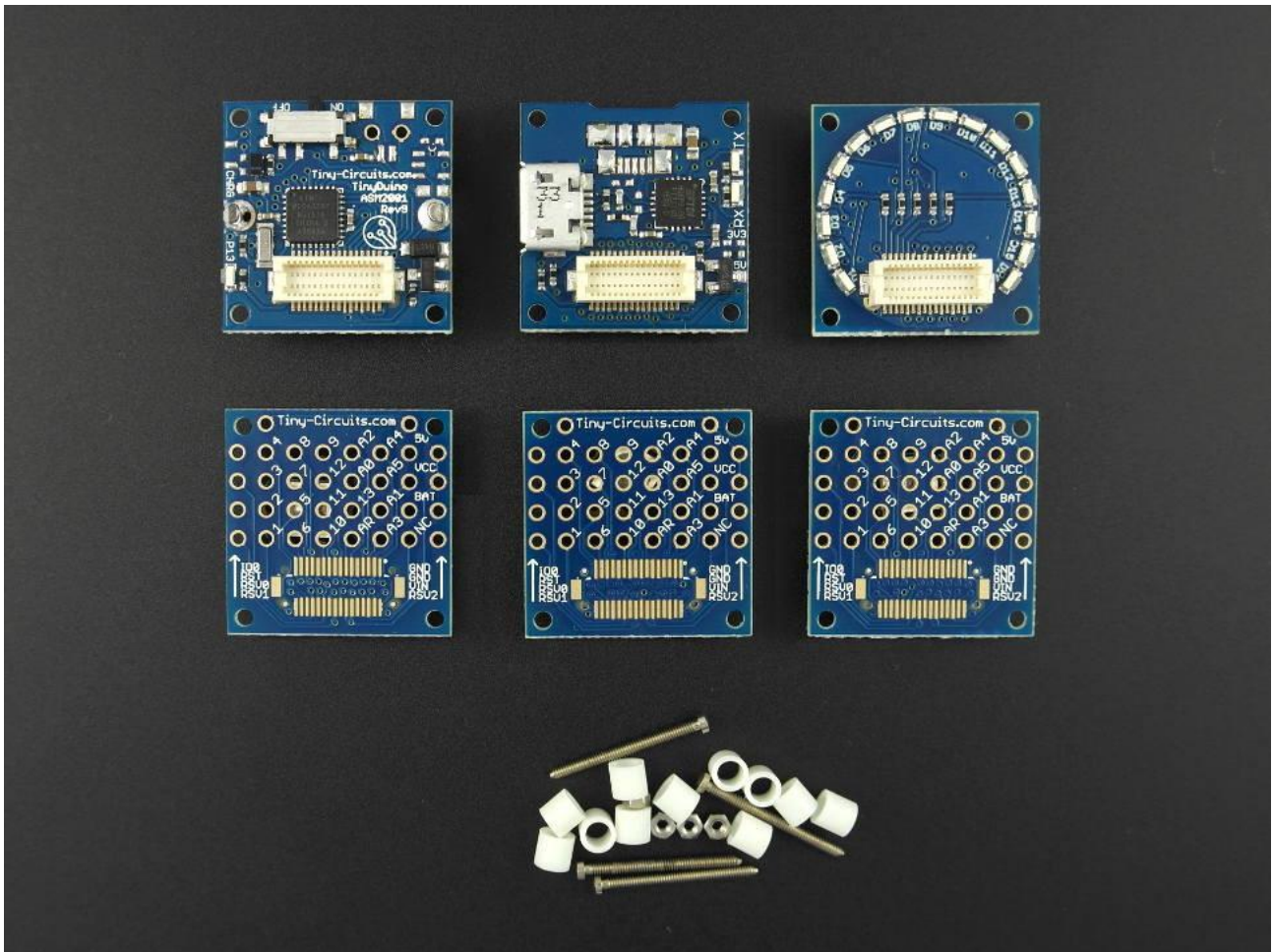
Address: A1208, Overseas Decoration Building, #122 Zhenhua RD., Futian, Shenzhen, China





# TinyDuino Starter Kit - Coin Cell - ASK1002-R-LG-B

 [tinycircuits.com/products/tinyduino-starter-kit](http://tinycircuits.com/products/tinyduino-starter-kit)



## DESCRIPTION

This **TinyDuino Starter Kit** is a great way to start with your TinyDuino and begin creating some cool projects! This kit comes with a TinyDuino processor with the **coin cell battery holder** (coin cell battery not included), so you can run your low power projects with a coin cell battery. You can also power your TinyDuino with a USB cable plugged in.

Note: For higher power projects you may want to check out the **TinyDuino Starter Kit - Lithium Battery Version**, which includes a rechargeable Lithium Polymer Battery pack.

This kit includes the following items:

This kit also includes basic instructions to get your first program running.

## Notes

- The TinyDuino processor board included has the coin cell option. The coin cell (a CR1632) is not included in the kit.
- The coin cell battery can only be used for low power applications and cannot be used to power every TinyShield (such as the TinyScreen or the WiFi TinyShield). In these cases, plan on using the Lithium battery version of the TinyDuino Processor.
- A micro USB cable is not included in the kit.