



Chipsmall Limited consists of a professional team with an average of over 10 year of expertise in the distribution of electronic components. Based in Hongkong, we have already established firm and mutual-benefit business relationships with customers from,Europe,America and south Asia,supplying obsolete and hard-to-find components to meet their specific needs.

With the principle of “Quality Parts,Customers Priority,Honest Operation,and Considerate Service”,our business mainly focus on the distribution of electronic components. Line cards we deal with include Microchip,ALPS,ROHM,Xilinx,Pulse,ON,Everlight and Freescale. Main products comprise IC,Modules,Potentiometer,IC Socket,Relay,Connector.Our parts cover such applications as commercial,industrial, and automotives areas.

We are looking forward to setting up business relationship with you and hope to provide you with the best service and solution. Let us make a better world for our industry!



## Contact us

Tel: +86-755-8981 8866 Fax: +86-755-8427 6832

Email & Skype: info@chipsmall.com Web: www.chipsmall.com

Address: A1208, Overseas Decoration Building, #122 Zhenhua RD., Futian, Shenzhen, China



# 6350-SR

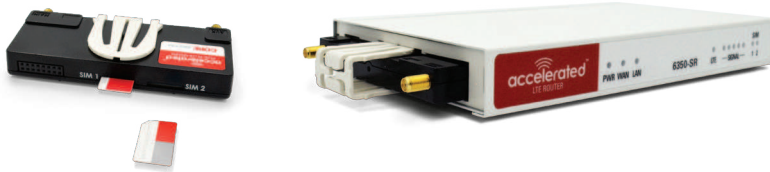
## LTE Router

Connected is Everything



### Get Connected and Stay Connected with Primary or Backup Cellular

Being connected is everything in today's data-driven economy. Eliminating downtime is essential to maximize productivity, support critical business applications, and avoid outages or disruptions that can impact sales, customer service, brand reputation and compliance.



DUAL-SIM SUPPORT WITH UPGRADABLE LTE CELLULAR MODEM

### Improve Business Continuity

Accelerate your networking solutions and eliminate downtime with the Accelerated 6350-SR LTE Router and its fully integrated cellular connection. The 6350-SR is a compact, affordable and high-performance device that features multiple WAN connectivity options (Ethernet or cellular) with load balancing and failover. With the Accelerated 1002-CM Plug-In modem, pictured above, the 6350-SR LTE Router can connect to mobile networks using the 4G LTE standard that best suits its given use case; larger locations and data-intensive applications may turn to the LTE-Advanced (Cat. 6) version of the CM Plug-In for the fastest cellular speeds commercially available while others may opt for the cost-saving deployment of a standard LTE (Cat. 4) connection.

### Combine Ethernet WAN with 4G LTE Wireless WAN for Primary or Failover Connection

The Accelerated 6350-SR LTE Router is a best-in-class solution that can future-proof network infrastructure thanks to its modular Plug-In LTE modem, stateful firewall, and VPN capabilities. Ensure maximum uptime and performance with the flexibility to deploy LTE connections where you need quick, easy and reliable Internet access.

Pair the 6350-SR's integrated LTE Plug-In modem with a dedicated wire line connection to provide dual ISP connectivity and maximize uptime.

## KEY FEATURES

- LTE Advanced, Standard LTE & LTE with EV-DO fallback
- Dual SIMs (manual or software controlled)
- Auto-switch between different carriers with Carrier Smart Select™
- Dynamic Port Configuration
- WAN Load balancing
- WAN Failover
- Port-based VLANs
- Serial port for remote management
- 5 Gigabit Ethernet ports
- Optional WiFi

## BENEFITS

- Lower cost than additional or replacement equipment
- Connects any Ethernet device
- 4G LTE Certified Plug-In modem
- Compact size (SR-9x5x1 in. CM-4x2x0.6 in.)
- Accelerated View (cloud-managed platform) facilitates rapid deployment and management of large networks
- Easily upgrade to meet changing cellular standards

## ENTERPRISE READY

- SME/SMB
- Retail Chains
- Distributed Enterprise
- ISP / Telecom
- Managed Services

CONSISTENT, RELIABLE, SCALABLE

# Technical Specifications



ETHERNET	5 Ethernet Port 10/100/1000 Base-T (RJ-45) (Default 1 WAN, 4 LAN)
WiFi	802.11 b/g/n (Optional)
POWER SUPPLY	12V DC, 1.5A; 100-240 AC
LEDs	Power, WAN Activity, LAN Activity, WiFi Activity, LTE, 5 Signal, SIM 1 & 2 LEDs
DIMENSIONS	6350-SR 9x5x1 in. (228x127x25 mm) - 1002-CM 4x2x0.6 in. (102x51x15 mm)
WEIGHT	6350-SR 26 oz. (0.73 kg) - 1002-CM 5.5 oz. (0.156 kg)
TEMPERATURE	32° F to +104° F (0° C to 40° C) Operating
STORAGE TEMP & HUMIDITY	-13°F to 167°F (-25°C to 75°C); 5% to 95% Non-Condensing
CERTIFICATIONS	FCC Part 15, Subpart B, Class A; CE, RCM; CAN ICES-3(B)/NMB-3(B)
<b>CELLULAR SPECIFICATIONS</b>	
CELL ANTENNA	2 Dipole; Frequency: 700-960/1575-2700 hz; Gain: 1-4 dBi;
SIM	2 SIM Card Slot (Size 2FF), Software Selectable & Hardware Switchable
CELLULAR CERTIFICATIONS	AT&T, Sprint, T-Mobile (North American SKUs), Verizon and PTCRB
<b>LTE PLUG-IN MODEMS</b>	
1002-CM03	Cat 3 LTE, EVDO, HSPA+, EDGE, GPRS and GSM
1002-CM04*	Cat 4 LTE, HSPA+, UMTS
1002-CM06	Cat 6 LTE-A, LTE, HSPA+



\*The 1002-CM04 is not supported on the Sprint Network

## aView<sup>TM</sup> Cloud Network Management

Like all Accelerated products, you can centrally manage the Accelerated 6350-SR with our cloud-based management portal, Accelerated View<sup>TM</sup>. This secure portal allows you to rapidly deploy and manage a large number of remote locations. From Accelerated View, you can remotely monitor, configure and update single devices or groups of Accelerated 6350-SRs.

Accelerated 6350-SR is also engineered to handle the unexpected. In the unlikely event of lost cellular data connectivity to your Accelerated 6350-SR, you can avoid costly on-site service technician visits by recovering the device Out-of-Band using an encrypted SMS control system: Accelerated Emergency Remote<sup>TM</sup>.

### Accelerated View<sup>TM</sup> features: Certified data center:

- Hardened data center
- IPsec secure communication
- Zero-touch provisioning
- Unlimited scalability
- 100% control and security
- SOC1
- SOC2
- PCI-DSS
- HIPAA

### Extended Maintenance & Support

Phone and email support, product replacement, and firmware updates included while under extended maintenance.



## NETWORK

- 5 Gb Ethernet ports (dynamic port configuration)
- Latest mobile technologies (LTE/4G/3G/UMTS/HSPA/...)
- Advanced Modem Management Software
- Automatic self-configuration for most Carrier/SIM combinations
- OOB management and recovery using secure SMS
- WiFi (Optional)
- VLAN

## SOFTWARE

- WAN Failover
- Load balancing between WAN connections
- Carrier Smart Select<sup>TM</sup>
- Designed from the ground up to be centrally or locally managed
- Local UI with full access to all configuration and diagnostics
- User friendly CLI with tab completion and smart help
- Smart configuration migration to latest releases
- Remote firmware upgrades
- Rapid security updates and regular firmware releases
- Automatic location services
- Accelerated View cloud management (configuration, reporting, alerts, usage, support)
- Map-based status summary for quick location overview
- VRRP

## FIREWALL

- Fully configurable stateful firewall
- Port forwarding
- Blocking / Filtering
- NAT / Passthrough / Routed

## NETWORK

- IPv4
- IPv6

## SECURITY

- VPN
- AES, 3DES
- IKEv1 / IKEv2, MODECFG, X509
- Interop with a large range of networking equipment.
- Support for legacy cryptographic interconnects (SHA1, DES, MD5)
- All services can be configured to allow comprehensive lockdown
- RADIUS, TACACS+
- IPsec: no artificial tunnel count limits