



Chipsmall Limited consists of a professional team with an average of over 10 year of expertise in the distribution of electronic components. Based in Hongkong, we have already established firm and mutual-benefit business relationships with customers from,Europe,America and south Asia,supplying obsolete and hard-to-find components to meet their specific needs.

With the principle of “Quality Parts,Customers Priority,Honest Operation,and Considerate Service”,our business mainly focus on the distribution of electronic components. Line cards we deal with include Microchip,ALPS,ROHM,Xilinx,Pulse,ON,Everlight and Freescale. Main products comprise IC,Modules,Potentiometer,IC Socket,Relay,Connector.Our parts cover such applications as commercial,industrial, and automotives areas.

We are looking forward to setting up business relationship with you and hope to provide you with the best service and solution. Let us make a better world for our industry!



Contact us

Tel: +86-755-8981 8866 Fax: +86-755-8427 6832

Email & Skype: info@chipsmall.com Web: www.chipsmall.com

Address: A1208, Overseas Decoration Building, #122 Zhenhua RD., Futian, Shenzhen, China



LOW PROFILE SHIELDED SMD POWER INDUCTORS



ASPI-104S



RoHS
Compliant

FEATURES:

- Superior to be high saturation for high density surface mounting
- High energy storage and Low resistance to keep power loss minimum
- Magnetically shielded with ferrite core for low radiation
- Mighty temperature deflection prevents damage during solder reflection

APPLICATIONS:

- Desktop, notebook, servers
- Network hubs, bridges, routers
- XDSL, PBX base stations
- Power source circuits, DC/DC converters, DC/AC inverters
- Digital TV, DVD, Modem, setup box
- Battery charger

STANDARD SPECIFICATIONS:

PARAMETERS

ABRACON P/N:	ASPI-104S xxx Series
Operating temperature:	-40°C to +85°C
Storage temperature:	-40°C to +85°C

Abracon Part Number	L (μH)	Tolerance %	R _{DC} (Ω) Max	I _{sat} (A) Max	I _{rms} (A) Max
ASPI-104S-7R0	7.0	K, M	0.027 0	4.80	4.50
ASPI-104S-100	10	K, M	0.035 0	4.40	3.80
ASPI-104S-150	15.0	K, M	0.050 0	3.60	3.10
ASPI-104S-180	18.0	K, M	0.065 6	2.70	3.20
ASPI-104S-220	22	K, M	0.073 0	2.90	2.50
ASPI-104S-270	27	K, M	0.093 0	2.30	2.30
ASPI-104S-330	33	K, M	0.093 0	2.30	2.20
ASPI-104S-470	47	K, M	0.135 6	2.10	1.90
ASPI-104S-680	68	K, M	0.213 0	1.50	1.42
ASPI-104S-101	100	K, M	0.304 0	1.35	1.25
ASPI-104S-121	120	K, M	0.350 0	1.20	1.08
ASPI-104S-151	150	K, M	0.506 0	1.15	0.85
ASPI-104S-181	180	K, M	0.663 0	1.05	0.70
ASPI-104S-221	220	K, M	0.756 0	0.92	0.70
ASPI-104S-331	330	K, M	1.090 0	0.70	0.52
ASPI-104S-471	470	K, M	1.610 0	0.60	0.50

Test Condition

- * Test Frequency is 100KHz, 0.1V
- * Tolerance: K= ±10%; M= ±20%
- * Inductance drop 35% at Isat
- * Temperature rise 3 0°C at I_{rms}

OPTIONS AND PART IDENTIFICATION:

(Left blank if standard)

ASPI-104S - -

Inductance Code
Please refer to the table in Page 2

Tolerance
K: ±10%
M: ±20%

Packaging
Blank: Bulk
T: Tape and Reel

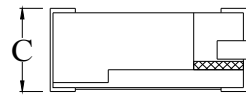
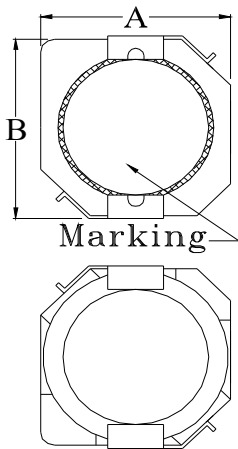
LOW PROFILE SHIELDED SMD POWER INDUCTORS



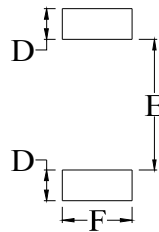
ASPI-104S

RoHS Compliant

OUTLINE DIMENSIONS:



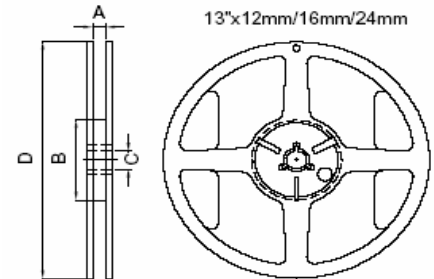
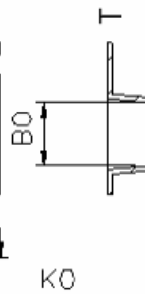
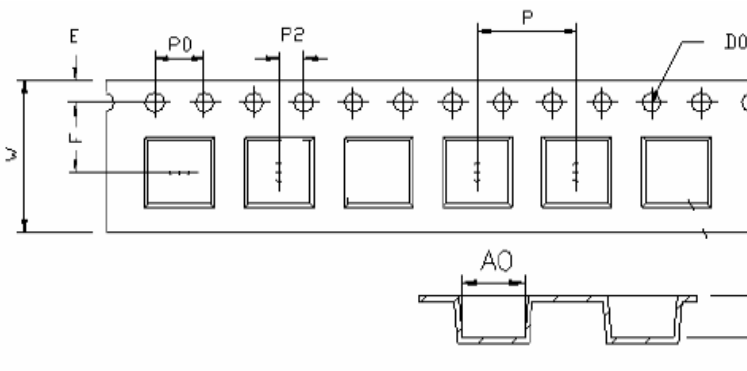
LAND PATTERNS (mm)



Part#	A	B	C	D	E	F
ASPI-104S-xxx	0.394±0.012 (10±0.3)	0.398±0.012 (10.1±0.3)	0.150±0.008 (3.8±0.2)	0.067 (1.7 ref.)	0.287 (7.3 ref.)	0.142 (3.6 ref.)

Dimension : Inches (mm)

TAPE & REEL

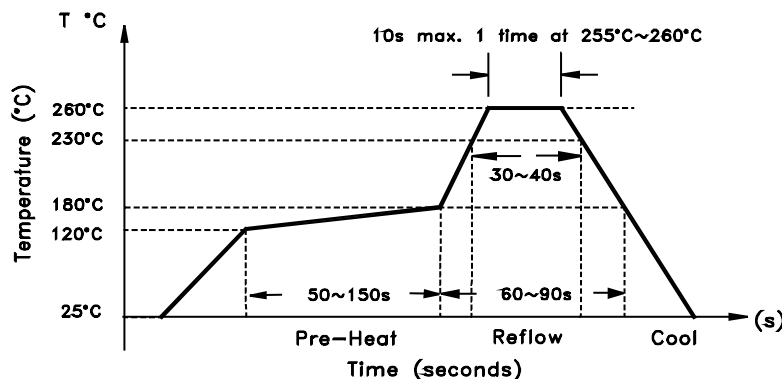


Part#	A0	B0	K0	F	E
ASPI-104S-xxx	10.6±0.1	10.6±0.1	4.6±0.1	11.5±0.1	1.75±0.1
Part#	W	P	P0	P2	T
ASPI-104S-xxx	24±0.3	16±0.1	4.0±0.1	2.0±0.1	0.4±0.05

Part#	A	B	C	D
ASPI-104S-xxx	24.5±0.2	100±0.5	13.2±0.3	330±1.0

Dimension: mm

REFLOW PROFILE:



ATTENTION: Abracon Corporation's products are COTS – Commercial-Off-The-Shelf products; suitable for Commercial, Industrial and, where designated, Automotive Applications. Abracon's products are not specifically designed for Military, Aviation, Aerospace, Life-dependant Medical applications or any application requiring high reliability where component failure could result in loss of life and/or property. For applications requiring high reliability and/or presenting an extreme operating environment, written consent and authorization from Abracon Corporation is required. Please contact Abracon Corporation for more information.

ABRACON IS
ISO9001:2008
CERTIFIED



Visit www.abracon.com for Terms & Conditions of Sale Revised: 02.22.11
30332 Esperanza, Rancho Santa Margarita, California 92688
tel 949-546-8000 | fax 949-546-8001 | www.abracon.com