



Chipsmall Limited consists of a professional team with an average of over 10 year of expertise in the distribution of electronic components. Based in Hongkong, we have already established firm and mutual-benefit business relationships with customers from,Europe,America and south Asia,supplying obsolete and hard-to-find components to meet their specific needs.

With the principle of “Quality Parts,Customers Priority,Honest Operation,and Considerate Service”,our business mainly focus on the distribution of electronic components. Line cards we deal with include Microchip,ALPS,ROHM,Xilinx,Pulse,ON,Everlight and Freescale. Main products comprise IC,Modules,Potentiometer,IC Socket,Relay,Connector.Our parts cover such applications as commercial,industrial, and automotives areas.

We are looking forward to setting up business relationship with you and hope to provide you with the best service and solution. Let us make a better world for our industry!



Contact us

Tel: +86-755-8981 8866 Fax: +86-755-8427 6832

Email & Skype: info@chipsmall.com Web: www.chipsmall.com

Address: A1208, Overseas Decoration Building, #122 Zhenhua RD., Futian, Shenzhen, China



SMD SHIELDED POWER INDUCTOR



18.5 x 15.2 x 7.6 mm

ASPI-1306S



RoHS
Compliant

FEATURES:

- Low radiation shielded architecture
- Large pads for good PCB mounting
- Low DCR, suitable for large currents
- High Energy storage

APPLICATIONS:

- Portable communication equipment
- OA equipment
- LCD, DVD, modem, set-top box
- DC/ DC converter

ELECTRICAL SPECIFICATIONS:

Abrakon P/N:	ASPI-1306S
Operating Temperature:	-40°C to +85°C
Storage Temperature:	+25°C

PART NUMBER	INDUCTANCE (uH) ±20%	DCR(Ω) max	Isat (A) max	Irms (A) max
ASPI-1306S-100M	10	0.0400	8.00	3.90
ASPI-1306S-150M	15	0.0480	7.00	3.40
ASPI-1306S-220M	22	0.0590	6.00	3.10
ASPI-1306S-330M	33	0.0750	5.00	2.80
ASPI-1306S-470M	47	0.0970	4.00	2.40
ASPI-1306S-680M	68	0.1380	3.00	2.00
ASPI-1306S-101M	100	0.2070	2.40	1.70
ASPI-1306S-151M	150	0.2930	2.10	1.30
ASPI-1306S-221M	220	0.4700	1.90	1.10
ASPI-1306S-331M	330	0.7800	1.10	0.86
ASPI-1306S-471M	470	0.9750	0.90	0.60
ASPI-1306S-681M	680	1.4000	0.96	0.64
ASPI-1306S-102M	1000	2.0100	0.80	0.53

Test Conditions

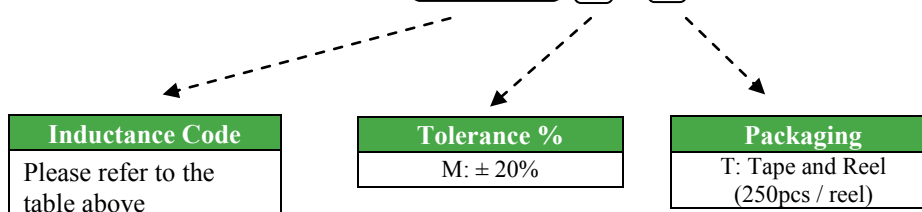
Inductance: 100kHz, 0.1V

Isat: $\Delta L/L$ (initial) $\geq -10\%$

Irms: $\Delta T \leq 40^\circ\text{C}$

OPTIONS AND PART IDENTIFICATION

ASPI-1306S - [] [] - []



SMD SHIELDED POWER INDUCTOR



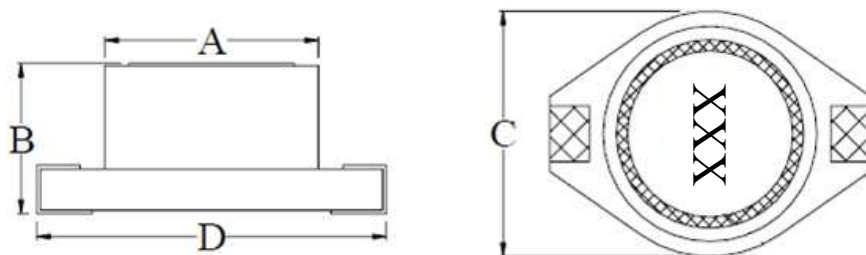
18.5 x 15.2 x 7.6 mm

ASPI-1306S



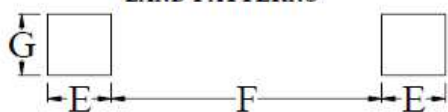
RoHS
Compliant

ELECTRICAL SPECIFICATION CHART



	DIM.	TOL.
A	12.7	±0.2
B	7.62	Max.
C	15.24	Max.
D	18.54	Max.
E	2.92	REF.
F	12.45	REF.
G	2.79	REF.

LAND PATTERNS

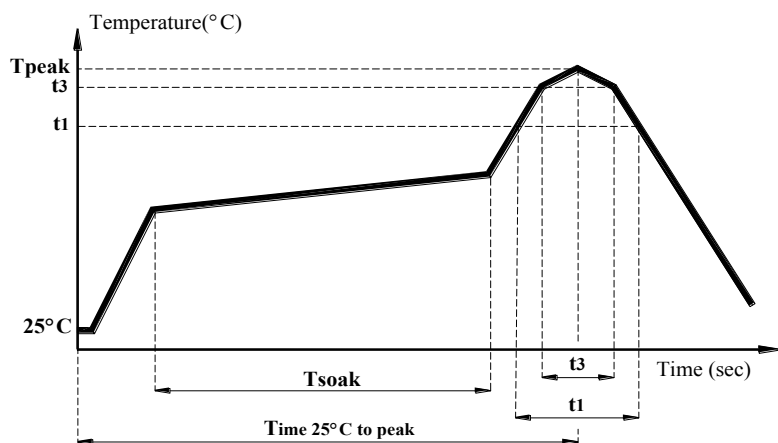


Dimension: mm

Materials

No	Part Name	Material
1	Core	Fe ₂ O ₃
		NiO
		CuO
		MgO
		ZnO
2	Enamelled Wire	Copper
		Modified Polyester Resin
3	Base	Copper
		Iron
		Zinc
		Tin
4	SN	COF
		PURE Tin PLATING

REFLOW PROFILE:



Item	mark	
Temperature rise gradient		3°C/sec (max)
Heating time	Tsoak	50s ~ 150s
Heating temperature		120°C~180°C
Time over 217°C	t1	70 sec
Time within 5°C of actual peak temperature	t3	10~30 sec
Peak temperature	Tpeak	250 (+0 / -5°C)
Time 25°C to peak Temperature		6 minutes max.



SMD SHIELDED POWER INDUCTOR



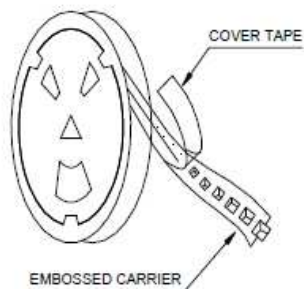
18.5 x 15.2 x 7.6 mm

ASPI-1306S

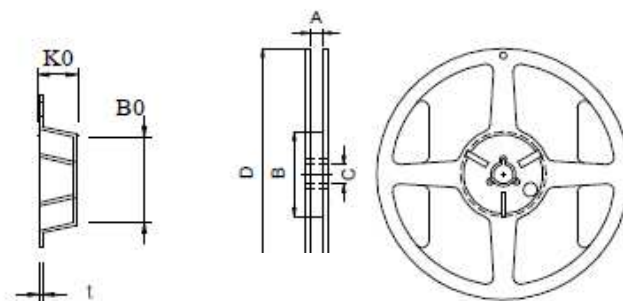
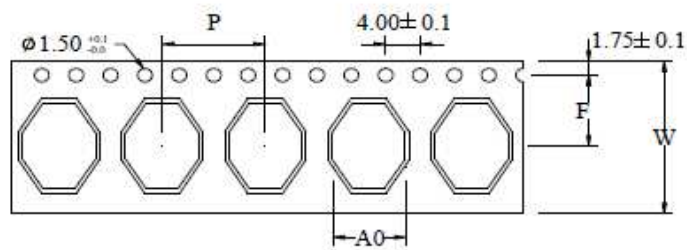
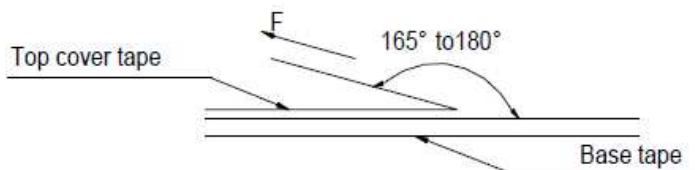


ELECTRICAL SPECIFICATION CHART

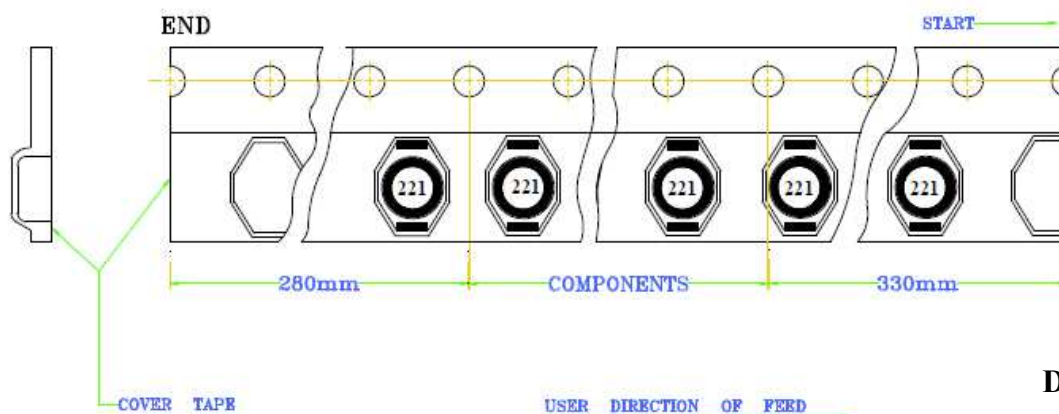
Packing
T: 250pcs / reel



★The force for tearing off cover tape is 10 to 130 grams in the arrow direction under the following conditions.



CARRIER TAPE / SIZE (mm)							REEL 13"×32mm			
A0	B0	K0	P	W	F	t	A	B	C	D
15.7 ± 0.1	19 ± 0.1	7.6 ± 0.1	20 ± 0.1	32 ± 0.3	14.2 ± 0.1	0.4 ± 0.05	32.5 ± 0.2	100 ± 0.5	13.2 ± 0.3	330 ± 1.0



Dimension: mm

ATTENTION: Abracon Corporation's products are COTS – Commercial-Off-The-Shelf products; suitable for Commercial, Industrial and, where designated, Automotive Applications. Abracon's products are not specifically designed for Military, Aviation, Aerospace, Life-dependant Medical applications or any application requiring high reliability where component failure could result in loss of life and/or property. For applications requiring high reliability and/or presenting an extreme operating environment, written consent and authorization from Abracon Corporation is required. Please contact Abracon Corporation for more information.

ABRACON IS
ISO9001:2008
CERTIFIED



Visit www.abracon.com for Terms & Conditions of Sale
30332 Esperanza, Rancho Santa Margarita, California 92688
tel 949-546-8000| fax 949-546-8001| www.abracon.com

Revised: 07.25.13