



Chipsmall Limited consists of a professional team with an average of over 10 year of expertise in the distribution of electronic components. Based in Hongkong, we have already established firm and mutual-benefit business relationships with customers from,Europe,America and south Asia,supplying obsolete and hard-to-find components to meet their specific needs.

With the principle of "Quality Parts,Customers Priority,Honest Operation,and Considerate Service",our business mainly focus on the distribution of electronic components. Line cards we deal with include Microchip,ALPS,ROHM,Xilinx,Pulse,ON,Everlight and Freescale. Main products comprise IC,Modules,Potentiometer,IC Socket,Relay,Connector.Our parts cover such applications as commercial,industrial, and automotives areas.

We are looking forward to setting up business relationship with you and hope to provide you with the best service and solution. Let us make a better world for our industry!



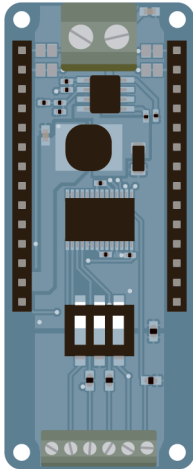
Contact us

Tel: +86-755-8981 8866 Fax: +86-755-8427 6832

Email & Skype: info@chipsmall.com Web: www.chipsmall.com

Address: A1208, Overseas Decoration Building, #122 Zhenhua RD., Futian, Shenzhen, China





SHIELD

Add industrial
connectivity to your
device

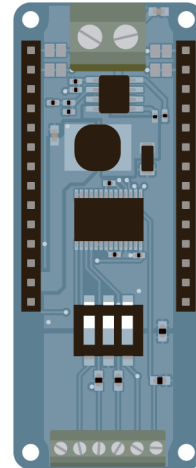
Want to add serial communications to
your device using the RS-485 protocol?
The Arduino MKR 485 shield will provide
the industrial connectivity you need.

STORE ARDUINO CC ARDUINO MKR 485 SHIELD



SHIELD

Thanks to this shield, you can now connect your MKR board to any of the industrial systems that using the RS 485 protocol. The MKR 485 shield is the ultimate expansion that allows MKR boards to connect to almost any legacy industrial system, such as industrial PLCs, controllers, drives and HMIs. Old industrial systems (e.g., machinery, heating systems, and conveyors) can be turned into IoT devices through a serial connection using the MKR 485.



Input Voltage	7V-16 V
Transceiver	TJA1049T/3
Interface	UART
Power Consumption	40 mA
Weight	12 g
Product Code	ASX00004