



Chipsmall Limited consists of a professional team with an average of over 10 year of expertise in the distribution of electronic components. Based in Hongkong, we have already established firm and mutual-benefit business relationships with customers from,Europe,America and south Asia,supplying obsolete and hard-to-find components to meet their specific needs.

With the principle of “Quality Parts,Customers Priority,Honest Operation,and Considerate Service”,our business mainly focus on the distribution of electronic components. Line cards we deal with include Microchip,ALPS,ROHM,Xilinx,Pulse,ON,Everlight and Freescale. Main products comprise IC,Modules,Potentiometer,IC Socket,Relay,Connector.Our parts cover such applications as commercial,industrial, and automotives areas.

We are looking forward to setting up business relationship with you and hope to provide you with the best service and solution. Let us make a better world for our industry!



## Contact us

Tel: +86-755-8981 8866 Fax: +86-755-8427 6832

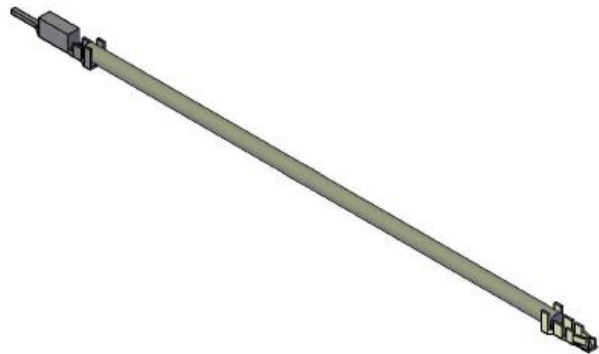
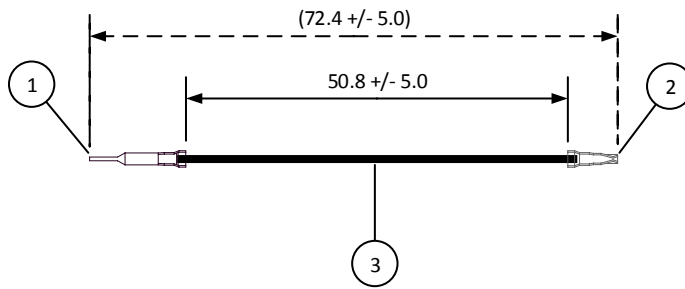
Email & Skype: info@chipsmall.com Web: www.chipsmall.com

Address: A1208, Overseas Decoration Building, #122 Zhenhua RD., Futian, Shenzhen, China



4		3		2		1	
ITEM	CONNECTOR PART NO.	DESCRIPTION	IPI CHECK	EOR CHECK	Applicable Tooling		
1	SXAM-01T-P0.6	XA CONNECTOR MALE CONTACT			APPLICATOR		
2	SXA-01T-P0.6	XA CONNECTOR FEMALE CONTACT			<b>Applicable Housings</b>		
3	UL1007, 22 AWG	BLACK					

NO. OF CIRCUITS	HOUSING PART NO. FOR SXA CONTACT	HOUSING PART NO. WITH PANEL LOCKS FOR SXAM CONTACT	HOUSING PART NO. WITHOUT PANEL LOCKS FOR SXAM CONTACT
2	XAP-02V-1	XARR-02V	XARR-02VF
3	XAP-03V-1	XARR-03V	XARR-03VF
4	XAP-04V-1	XARR-04V	XARR-04VF
5	XAP-05V-1	XARR-05V	XARR-05VF
6	XAP-06V-1	XARR-06V	XARR-06VF
7	XAP-07V-1	XARR-07V	-
8	XAP-08V-1	XARR-08V	XARR-08VF
9	XAP-09V-1	XARR-09V	XARR-09VF
10	XAP-10V-1	XARR-10V	XARR-10VF
11	XAP-11V-1	XARR-11V	-
12	XAP-12V-1	XARR-12V	XARR-12VF
13	XAP-13V-1	XARR-13V	-
14	XAP-14V-1	XARR-14V	-
15	XAP-15V-1	XARR-15V	-



**JST**

SCALE	CUSTOMER NAME	CUSTOMER PART NO.
1: 1		
DIMENSIONS All dimensions are in MM with a tolerance of +/- 3.0 unless otherwise specified.	DESCRIPTION 2.5 mm Pitch XA to XA Series Standard Leads - 2" Inside Length DOUBLE-END LEADS, M-F	
DRAWN BY STEVEN PILKINGTON	ASSEMBLY PART NO. ASXAMSXA22K51	
CHECKED BY JUSTIN BAKER	DRAWING NO. & REVISION GAM-076	REVISED 3/9/2016

REV.	DESCRIPTION	DATE	BY
------	-------------	------	----

4

3

2

1