



Chipsmall Limited consists of a professional team with an average of over 10 year of expertise in the distribution of electronic components. Based in Hongkong, we have already established firm and mutual-benefit business relationships with customers from,Europe,America and south Asia,supplying obsolete and hard-to-find components to meet their specific needs.

With the principle of "Quality Parts,Customers Priority,Honest Operation,and Considerate Service",our business mainly focus on the distribution of electronic components. Line cards we deal with include Microchip,ALPS,ROHM,Xilinx,Pulse,ON,Everlight and Freescale. Main products comprise IC,Modules,Potentiometer,IC Socket,Relay,Connector.Our parts cover such applications as commercial,industrial, and automotives areas.

We are looking forward to setting up business relationship with you and hope to provide you with the best service and solution. Let us make a better world for our industry!



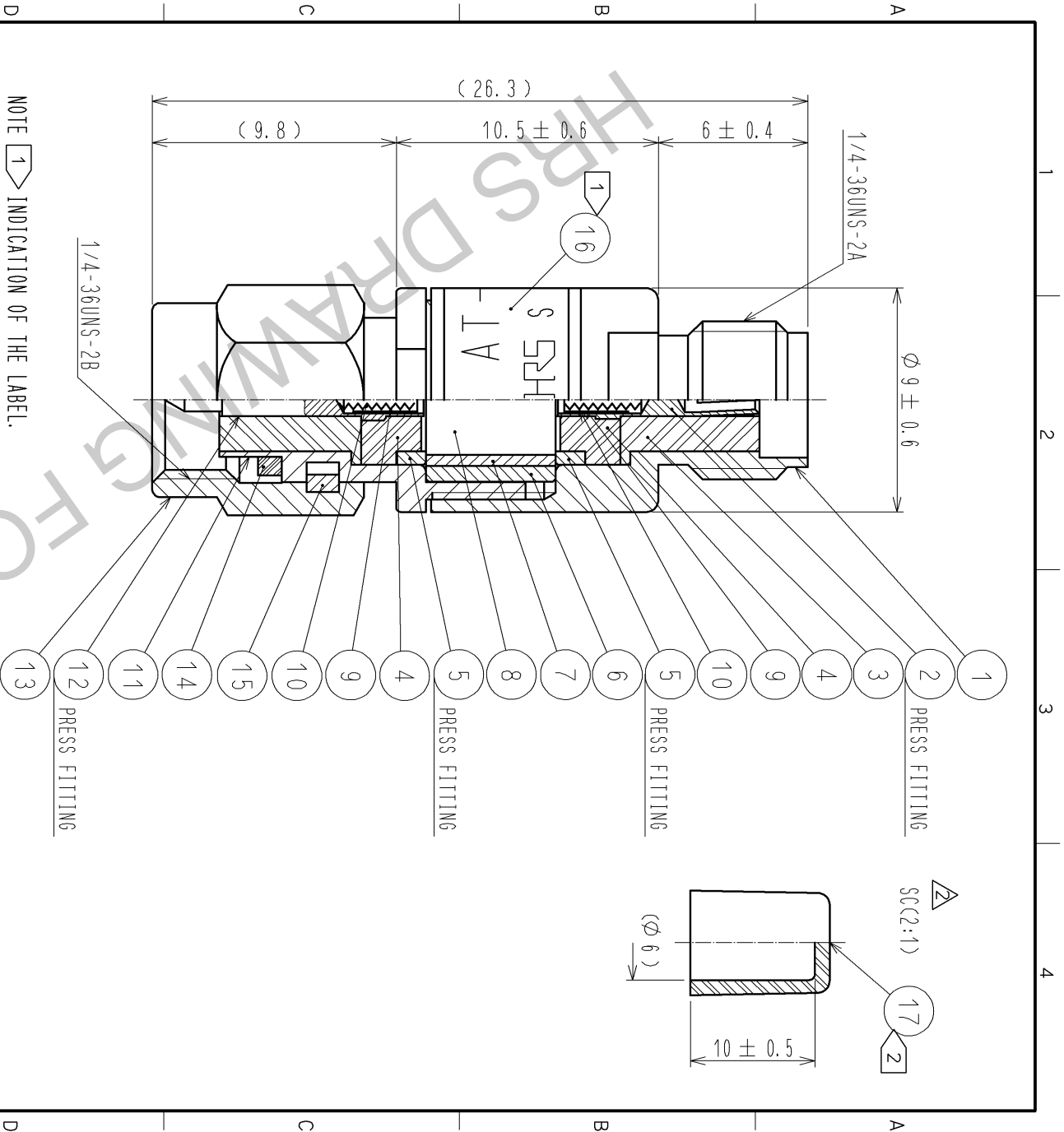
## Contact us

Tel: +86-755-8981 8866 Fax: +86-755-8427 6832

Email & Skype: info@chipsmall.com Web: www.chipsmall.com

Address: A1208, Overseas Decoration Building, #122 Zhenhua RD., Futian, Shenzhen, China





NOTE ① INDICATION OF THE LABEL.  
 · AT-110V  
 · 10dB  
 · HRS  
 · S. NO.

② Ref no. ⑰ is delivered with being attached to ref no. ①.

9	BERYLLIUM COPPER	GOLD PLATING	17	STYRENIC-BASED ELASTOMERS	NATURAL	
8	ALUMINA		16	BERYLLIUM COPPER	NICKEL PLATING	
7	BERYLLIUM COPPER	GOLD PLATING	15	BERYLLIUM COPPER	NICKEL PLATING	
6	BRASS	NICKEL PLATING	14	SILICON RUBBER		
5	BRASS	NICKEL PLATING	14	SILICON RUBBER		
4	PTFE		13	STAINLESS STEEL	PASSIVATED	
3	PTFE		12	BERYLLIUM COPPER	GOLD PLATING	
2	BERYLLIUM COPPER	GOLD PLATING	11	STAINLESS STEEL	PASSIVATED	
1	STAINLESS STEEL	PASSIVATED	10	PLANO WIRE		

UNITS	mm	SCALE	COUNT	DESCRIPTION OF REVISIONS	DESIGNED	CHECKED	DATE	FINISH . REMARKS	
								MATERIAL	REMARKS
4	1	2	2	DIS-K-002989	TO. KATAYAMA	KY. SHIMIZU	13.07.03		
		APPROVED	: MT. SHIBUTANI		11.07.21	DRAWING NO.	EDC4-181122-00		
		CHECKED	: KY. SHIMIZU		11.07.21	PART NO.	AT-110V		
		DESIGNED	: TO. KATAYAMA		11.07.21	CODE NO.	CL354-0272-7-00		
		DRAWN	: TO. KATAYAMA		11.07.21				