

Chipsmall Limited consists of a professional team with an average of over 10 year of expertise in the distribution of electronic components. Based in Hongkong, we have already established firm and mutual-benefit business relationships with customers from,Europe,America and south Asia,supplying obsolete and hard-to-find components to meet their specific needs.

With the principle of “Quality Parts,Customers Priority,Honest Operation,and Considerate Service”,our business mainly focus on the distribution of electronic components. Line cards we deal with include Microchip,ALPS,ROHM,Xilinx,Pulse,ON,Everlight and Freescale. Main products comprise IC,Modules,Potentiometer,IC Socket,Relay,Connector.Our parts cover such applications as commercial,industrial, and automotives areas.

We are looking forward to setting up business relationship with you and hope to provide you with the best service and solution. Let us make a better world for our industry!

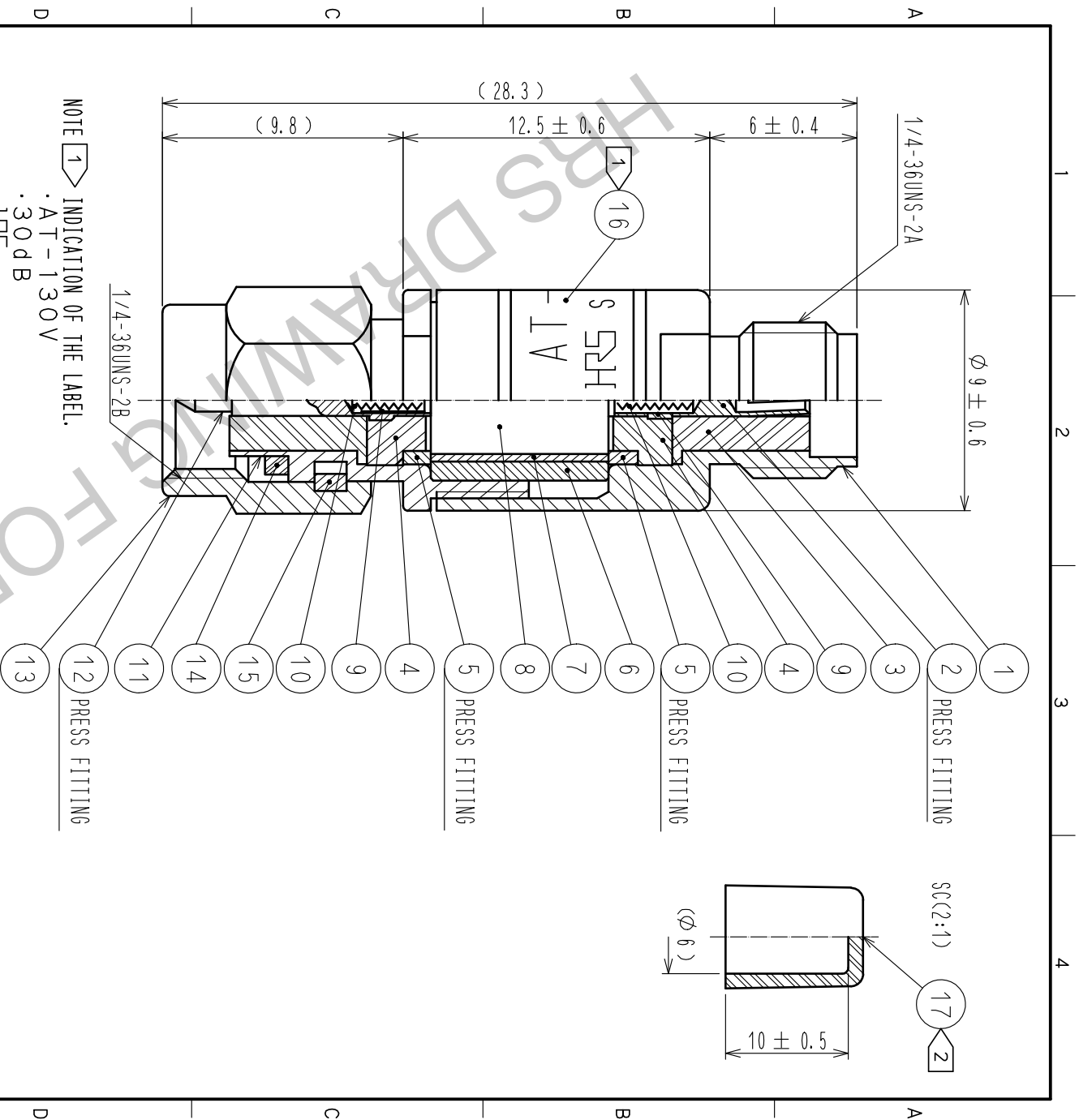


Contact us

Tel: +86-755-8981 8866 Fax: +86-755-8427 6832

Email & Skype: info@chipsmall.com Web: www.chipsmall.com

Address: A1208, Overseas Decoration Building, #122 Zhenhua RD., Futian, Shenzhen, China



NOTE ① INDICATION OF THE LABEL.
 .AT-130V
 .30dB
 .HRS
 .S. NO.

② Ref no. ⑰ is delivered with being attached to ref no. ①.

ROHS COMPLIANT

9	BERYLLIUM COPPER	GOLD PLATING	17	STYRENIC-BASED ELASTOMERS	NATURAL
8	ALUMINA				
7	BERYLLIUM COPPER	GOLD PLATING	16		LABEL
6	BRASS	NICKEL PLATING	15	BERYLLIUM COPPER	NICKEL PLATING
5	BRASS	NICKEL PLATING	14	SILICON RUBBER	
4	PTFE		13	STAINLESS STEEL	PASSIVATED
3	PTFE		12	BERYLLIUM COPPER	GOLD PLATING
2	BERYLLIUM COPPER	GOLD PLATING	11	STAINLESS STEEL	PASSIVATED
1	STAINLESS STEEL	PASSIVATED	10	PLANO WIRE	
NO.	MATERIAL	FINISH . REMARKS	NO.	MATERIAL	FINISH . REMARKS

UNITS	mm	SCALE	4 : 1	COUNT	DESCRIPTION OF REVISIONS	DESIGNED	CHECKED	DATE
		APPROVED : KY. SHIMIZU CHECKED : TO. KATAYAMA DESIGNED : YI. FUNADA DRAWN : YI. FUNADA		DRAWING NO. 15.10.28 PART NO. 15.10.28 CODE NO. 15.10.28		ED04-181142-00 AT-130V CL354-0279-6-00		1/1