



Chipsmall Limited consists of a professional team with an average of over 10 year of expertise in the distribution of electronic components. Based in Hongkong, we have already established firm and mutual-benefit business relationships with customers from,Europe,America and south Asia,supplying obsolete and hard-to-find components to meet their specific needs.

With the principle of “Quality Parts,Customers Priority,Honest Operation,and Considerate Service”,our business mainly focus on the distribution of electronic components. Line cards we deal with include Microchip,ALPS,ROHM,Xilinx,Pulse,ON,Everlight and Freescale. Main products comprise IC,Modules,Potentiometer,IC Socket,Relay,Connector.Our parts cover such applications as commercial,industrial, and automotives areas.

We are looking forward to setting up business relationship with you and hope to provide you with the best service and solution. Let us make a better world for our industry!



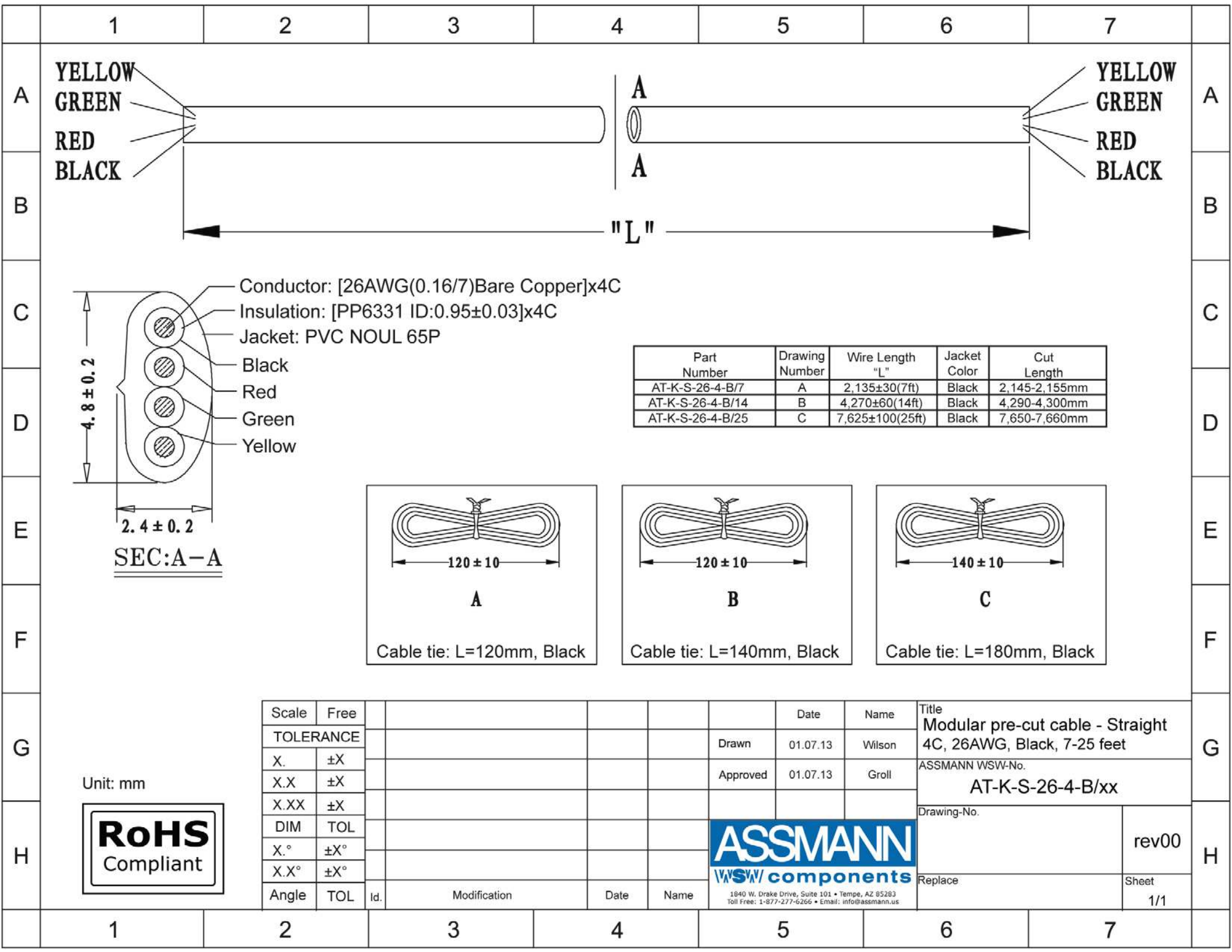
## Contact us

Tel: +86-755-8981 8866 Fax: +86-755-8427 6832

Email & Skype: info@chipsmall.com Web: www.chipsmall.com

Address: A1208, Overseas Decoration Building, #122 Zhenhua RD., Futian, Shenzhen, China

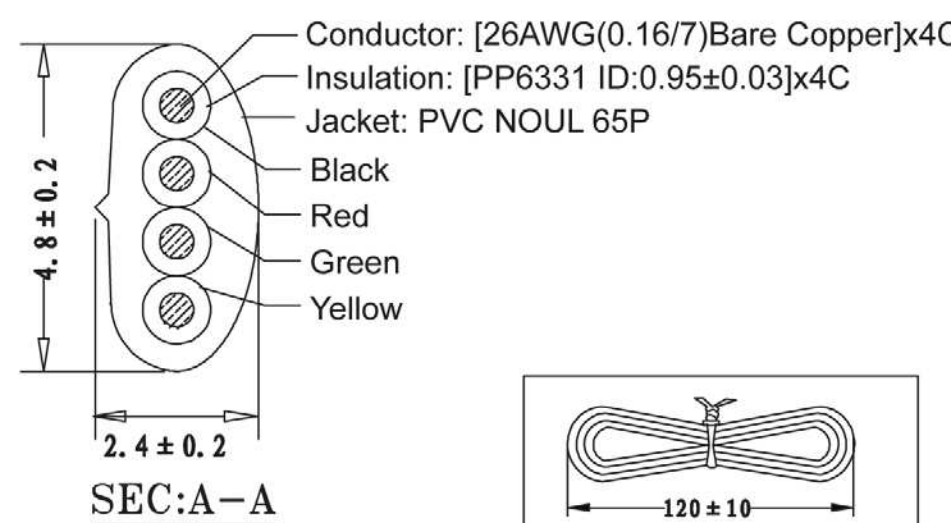




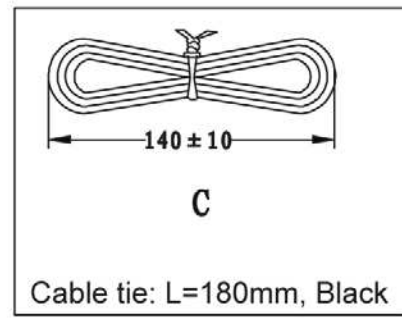
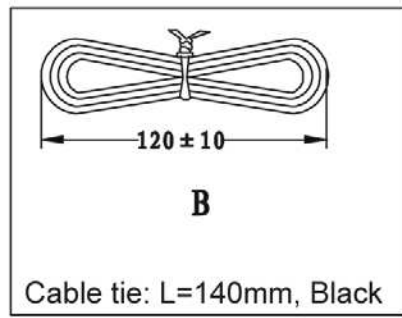
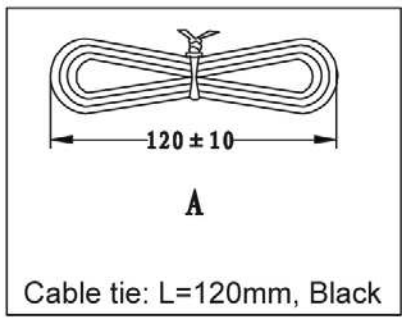
YELLOW  
GREEN  
RED  
BLACK

YELLOW  
GREEN  
RED  
BLACK

"L"



Part Number	Drawing Number	Wire Length "L"	Jacket Color	Cut Length
AT-K-S-26-4-B/7	A	2,135±30(7ft)	Black	2,145-2,155mm
AT-K-S-26-4-B/14	B	4,270±60(14ft)	Black	4,290-4,300mm
AT-K-S-26-4-B/25	C	7,625±100(25ft)	Black	7,650-7,660mm



Scale	Free					Date	Name	Title
TOLERANCE						Drawn	01.07.13	Wilson
X.	±X					Approved	01.07.13	Groll
X.X	±X							
X.XX	±X							
DIM	TOL							
X.°	±X°							
X.X°	±X°							
Angle	TOL	Id.	Modification	Date	Name	 1840 W. Drake Drive, Suite 101 • Tempe, AZ 85283 Toll Free: 1-877-277-6266 • Email: info@assmann.us		

Unit: mm



Title		Modular pre-cut cable - Straight
		4C, 26AWG, Black, 7-25 feet
ASSMANN WSW-No.		AT-K-S-26-4-B/xx
Drawing-No.		
Replace		rev00
		Sheet 1/1