



Chipsmall Limited consists of a professional team with an average of over 10 year of expertise in the distribution of electronic components. Based in Hongkong, we have already established firm and mutual-benefit business relationships with customers from,Europe,America and south Asia,supplying obsolete and hard-to-find components to meet their specific needs.

With the principle of “Quality Parts,Customers Priority,Honest Operation,and Considerate Service”,our business mainly focus on the distribution of electronic components. Line cards we deal with include Microchip,ALPS,ROHM,Xilinx,Pulse,ON,Everlight and Freescale. Main products comprise IC,Modules,Potentiometer,IC Socket,Relay,Connector.Our parts cover such applications as commercial,industrial, and automotives areas.

We are looking forward to setting up business relationship with you and hope to provide you with the best service and solution. Let us make a better world for our industry!



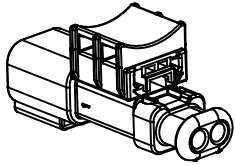
Contact us

Tel: +86-755-8981 8866 Fax: +86-755-8427 6832

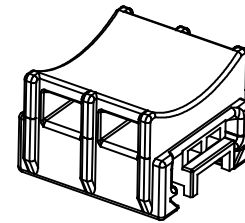
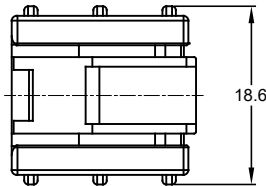
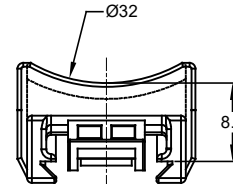
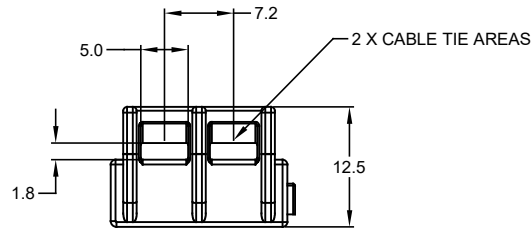
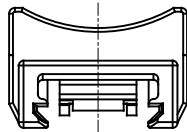
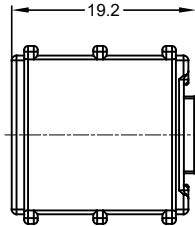
Email & Skype: info@chipsmall.com Web: www.chipsmall.com

Address: A1208, Overseas Decoration Building, #122 Zhenhua RD., Futian, Shenzhen, China





ATTACHMENT CLIP SHOWN MOUNTED TO AT04-2P-SR01 RECEPTACLE



REVISIONS					
REV	ECO	DESCRIPTION	DATE	BY	APPR
A1	-	FIRST RELEASE	27SEP2017	JAH	
A2	-	UPDATE DESIGN	19MAR2018	Wilber	Tommy

NOTES: UNLESS OTHERWISE SPECIFIED

1. MATERIAL: THERMOPLASTIC. COLOR: BLACK
2. THIS CLIP MATES WITH:
 - A. AT04-2P / 3P / 4P / 6P / 12P
 - B. ATM04-2P THRU 12P
 - C. ATP04-2P / 4P
3. ALL DIMENSIONS ARE FOR REFERENCE USE ONLY.

AT11-VCLIP		DESCRIPTION		ITEM
QUANTITY	PART NUMBER	MATERIALS LIST		
UNLESS OTHERWISE SPECIFIED:		SIGNATURES		DATE
1) All dimensions are in metric (mm).		DRAWN: Wilber.Liu		19Mar2018
2) Tolerances are as follows:		CHECKED: Orion.Li		19Mar2018
1 PL DEC ±0.30		ENGINEER:		
2 PL DEC ±0.15		APPROVAL: TOMMY.XIE		19Mar2018
3 PL DEC ±0.08		CUSTOMER:		
3) Note reference =		THIS DRAWING IS SUPPLIED FOR INFORMATION ONLY. DESIGN FEATURES, SPECIFICATIONS AND PERFORMANCE DATA SHOWN HEREON ARE THE PROPERTY OF THE AMPHENOL CORPORATION. NO RIGHTS OF REPRODUCTION ARE IMPLIED. ALL DIMENSIONS ARE SUBJECT TO NORMAL MANUFACTURING VARIATIONS.		
MATERIAL SPECIFICATIONS:		CUSTOMER:		
PROCESS SPECIFICATIONS:		SIZE: B C-		DWG NO: AT11-VCLIP
NEXT ASSY:		SCALE: NONE		REVISION: A2

Amphenol

Sine Systems - www.amphenol-sine.com
44724 Morley Drive
Clinton Township, MI 48036

A-SERIES ATTACHMENT CLIP

SIZE: B C-	DWG NO: AT11-VCLIP	REVISION: A2
SCALE: NONE	SHEET 1 OF 1	

TITLE: A-SERIES ATTACHMENT CLIP
DWG NO: AT11-VCLIP
REV: A2
SH: 1
OF: 1