



Chipsmall Limited consists of a professional team with an average of over 10 year of expertise in the distribution of electronic components. Based in Hongkong, we have already established firm and mutual-benefit business relationships with customers from,Europe,America and south Asia,supplying obsolete and hard-to-find components to meet their specific needs.

With the principle of “Quality Parts,Customers Priority,Honest Operation,and Considerate Service”,our business mainly focus on the distribution of electronic components. Line cards we deal with include Microchip,ALPS,ROHM,Xilinx,Pulse,ON,Everlight and Freescale. Main products comprise IC,Modules,Potentiometer,IC Socket,Relay,Connector.Our parts cover such applications as commercial,industrial, and automotives areas.

We are looking forward to setting up business relationship with you and hope to provide you with the best service and solution. Let us make a better world for our industry!



Contact us

Tel: +86-755-8981 8866 Fax: +86-755-8427 6832

Email & Skype: info@chipsmall.com Web: www.chipsmall.com

Address: A1208, Overseas Decoration Building, #122 Zhenhua RD., Futian, Shenzhen, China



Alu-Topline



Detailed product information can be found on www.bopla.de



- 4 standard lengths; flexible length design available
- 2 heights
- More dimensions on request
- Horizontally-divided profiles for easy mounting
- Recessed membrane keypad area in the lid
- Mounting grooves inside
- "Invisible" wall fitting as accessory

Colour:

Natural-coloured anodised aluminium profile; plastic lid black, similar to RAL 9005 or graphite grey, similar to RAL 7024; special colours on request

Protection class:

IP 40/DIN EN 60529; IP 54/DIN EN 60529 as an option

Enclosure material:

Extruded profiles: Al Mg Si 0.5 anodised; plastic lid: ABS; for details see Technical Information

The enclosure's profile technology allows optimal adaptation to individual requirements.



The divided enclosure profile ensures fast, easy mounting of the electronic components.



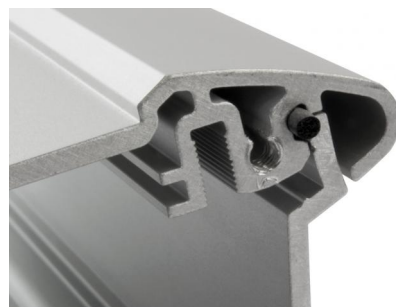
Alu-Topline has a recessed surface for mounting keypads or operating elements, e.g. hand-operated switches.



Additional smooth surfaces for mounting interfaces, e.g. USB or Sub-D connectors.



Plastic lids in quartz grey or graphite grey available as a profile end.



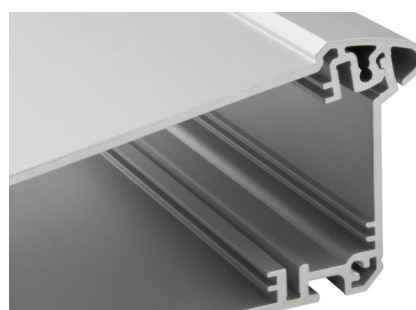
For protection class IP 54, in addition to seal AT...DI - available as an accessory - a round cord seal can be factory-fitted in the enclosure profile.



The enclosure offers a range of options for wall fitting.



Special profile lengths or other modifications are available on request.



The profiles are equipped with various plug-in slots and also screw channels for alternative uses for mounting circuit boards.

Alu-Topline | Enclosures

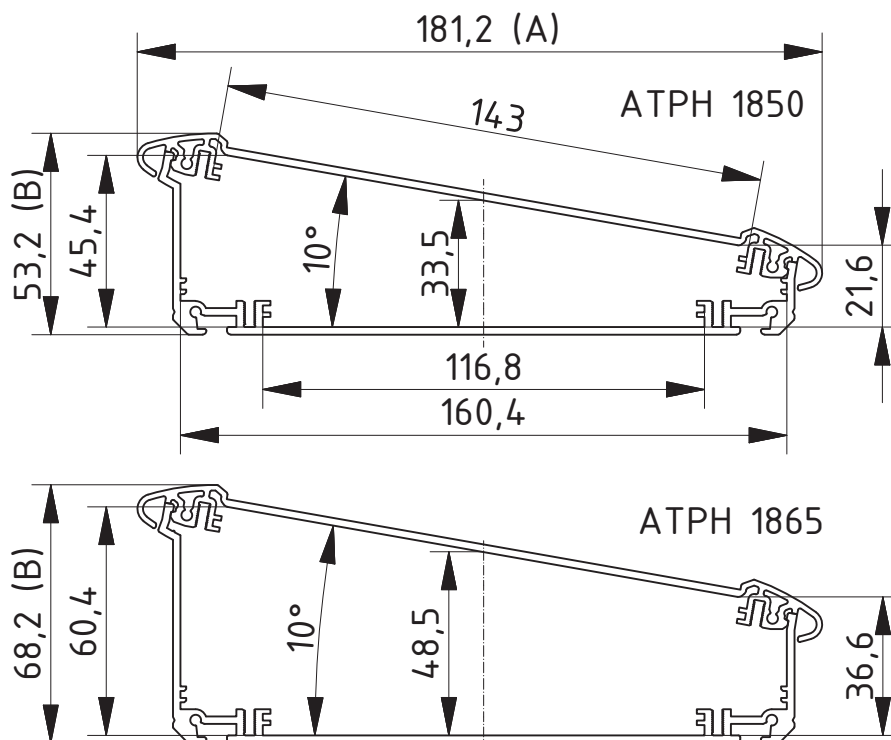


Enclosure profiles, horizontally-divided

Model	Order no.	A	B	C
ATPH 1850-0150	92850150	181,2	53,2	150
ATPH 1850-0200	92850200	181,2	53,2	200
ATPH 1850-0250	92850250	181,2	53,2	250
ATPH 1850-0300	92850300	181,2	53,2	300
ATPH 1865-0150	92865150	181,2	68,2	150
ATPH 1865-0200	92865200	181,2	68,2	200
ATPH 1865-0250	92865250	181,2	68,2	250
ATPH 1865-0300	92865300	181,2	68,2	300

Scope of delivery: Enclosure profile, 2 parts

Note: Special lengths on request.



Z-2803215

Alu-Topline | Accessories

End cover

Model	Order no.	Colour	Note
ATD 1850-7024	92050024	Graphite grey	For ATPH 1850
ATD 1850-9005	92050005	Black	For ATPH 1850
ATD 1865-7024	92065024	Graphite grey	For ATPH 1865
ATD 1865-9005	92065005	Black	For ATPH 1865

Scope of delivery: 2 lids, 8 screws, 8 screw covers



Seals for ingress protection IP 54

Model	Order no.	Note
AT 1850 DI	92050000	For ATPH 1850
AT 1865 DI	92065000	For ATPH 1865

Scope of delivery: 5 sets of sponge rubber seals (r. / l.)

Note: For protection class IP 54, in addition to seal AT...DI - available as an accessory - a round cord seal can be factory-fitted in the enclosure profile. Using the seals increases the enclosure width by approx. 1.6 mm.



Wall fastening, aluminium

Model	Order no.	Note
AT 1800-0150 WB	92800150	For ATPH-0150
AT 1800-0200 WB	92800200	For ATPH-0200
AT 1800-0250 WB	92800250	For ATPH-0250
AT 1800-0300 WB	92800300	For ATPH-0300

Scope of delivery: 1 wall profile, 2 slotted set screws

Note: Special lengths on request.



Universal wall fitting

Model	Order no.	Colour	Note
AT 0150-7024 UWB	92815024	Graphite grey	For ATPH-0150
AT 0200-7024 UWB	92820024	Graphite grey	For ATPH-0200
AT 0250-7024 UWB	92825024	Graphite grey	For ATPH-0250
AT 0300-7024 UWB	92830024	Graphite grey	For ATPH-0300

Scope of delivery: Profile (aluminium), 2 PA6 side flanges (complete), screws, covers

Note: Can be swivelled in 10° stages. Enclosure processing on request.



Insulating strip for PCB mounting on the profile

Model	Order no.	Note
AT-IS 00020	92000100	Length: 101,5 mm

Scope of delivery: 1 insulating strip



Rubber feet

Model	Order no.	Colour	Note
AB - GF	84006700	Black	Polyurethane, 65-75 Shore

Scope of delivery: 4 rubber feet

