



Chipsmall Limited consists of a professional team with an average of over 10 year of expertise in the distribution of electronic components. Based in Hongkong, we have already established firm and mutual-benefit business relationships with customers from,Europe,America and south Asia,supplying obsolete and hard-to-find components to meet their specific needs.

With the principle of “Quality Parts,Customers Priority,Honest Operation,and Considerate Service”,our business mainly focus on the distribution of electronic components. Line cards we deal with include Microchip,ALPS,ROHM,Xilinx,Pulse,ON,Everlight and Freescale. Main products comprise IC,Modules,Potentiometer,IC Socket,Relay,Connector.Our parts cover such applications as commercial,industrial, and automotives areas.

We are looking forward to setting up business relationship with you and hope to provide you with the best service and solution. Let us make a better world for our industry!



## Contact us

Tel: +86-755-8981 8866 Fax: +86-755-8427 6832

Email & Skype: info@chipsmall.com Web: www.chipsmall.com

Address: A1208, Overseas Decoration Building, #122 Zhenhua RD., Futian, Shenzhen, China



---

## RF Design Kit ATAK57xx Selection Guide

Atmel offers various kinds of RF Design Kits for different RF frequencies. These kits consist of a motherboard, a transmitter design board, a receiver design board, the RF design kit software and a number of other components.

This selection guide for the different ATAK57xx RF Design Kits makes it easy to find the order number for your specific requirements. To make the selection clear the procedure is illustrated in the flowchart on page 2.

Please proceed with the selection as follows:

1. Choose the desired RF frequency
2. Decide whether a SAW front-end filter on the receiver board is needed or not. Using a SAW front-end filter results in the following advantages:
  - Increased system selectivity
  - Improved large signal handling capability
  - Improved blocking of nearby disturbing signals
  - Higher image frequency suppression

But:

  - Additional insertion loss reduces receiver sensitivity and hence also the link range (rule of thumb: approximately 3 dB)
  - Higher system costs
3. For some kits, the receiving bandwidth can be chosen optionally

Lower bandwidth results in increased system selectivity and higher receiver sensitivity in case of ASK modulation, but also requires a smaller frequency tolerance of the transmitter.

With these three decisions, follow the flow chart to select the appropriate order number for your RF Design Kit.

If other transmitter or receiver design boards will be operated with the RF Design Kit (e.g., other RF frequencies), these boards can be ordered separately.

The currently supported design boards are listed in Table 1 on page 3. This table lists their features, order numbers, and assignment to the order numbers of the RF Design Kit where they are included.



---

### ATAK57xx RF Design Kit

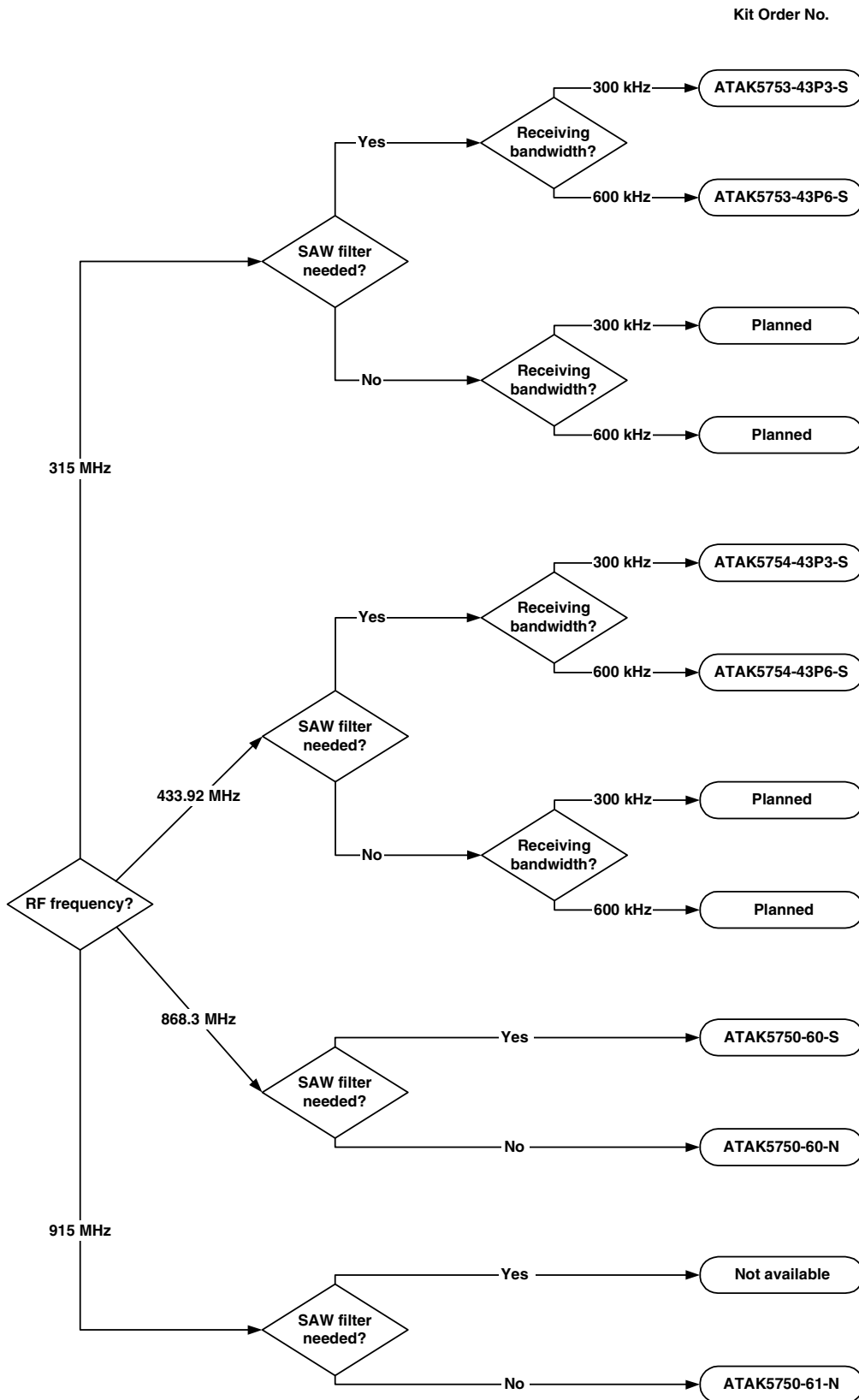
---

### Selection Guide

### Preliminary



Figure 1. Flow Chart



**Table 1.** Currently Supported Design Boards

Order Number for RF Design Kit	ATAK5750-60-S	ATAK5750-60-N	ATAK5750-61-N	ATAK5753-43P3-S	ATAK5753-43P6-S	ATAK5754-43P3-S	ATAK5754-43P6-S	RF Frequency (MHz)	IF Bandwidth (kHz)	SAW Front End Filter
<b>Transmitter Design Board</b>										
ATAB5750-8	X	X						868.3	-	-
ATAB5750-9			X					915	-	-
ATAB5753				X	X			315	-	-
ATAB5754						X	X	433.92	-	-
<b>Receiver Design Board</b>										
ATAB5760-S	X							868.3	600	Yes
ATAB5760-N		X						868.3	600	No
ATAB5761-N			X					915	600	No
ATAB5743P3-S3				X				315	300	Yes
ATAB5743P6-S3					X			315	600	Yes
ATAB5743P3-S4						X		433.92	300	Yes
ATAB5743P6-S4							X	433.92	600	Yes





## Atmel Corporation

2325 Orchard Parkway  
San Jose, CA 95131, USA  
Tel: 1(408) 441-0311  
Fax: 1(408) 487-2600

## Regional Headquarters

### Europe

Atmel Sarl  
Route des Arsenalux 41  
Case Postale 80  
CH-1705 Fribourg  
Switzerland  
Tel: (41) 26-426-5555  
Fax: (41) 26-426-5500

### Asia

Room 1219  
Chinachem Golden Plaza  
77 Mody Road Tsimshatsui  
East Kowloon  
Hong Kong  
Tel: (852) 2721-9778  
Fax: (852) 2722-1369

### Japan

9F, Tonetsu Shinkawa Bldg.  
1-24-8 Shinkawa  
Chuo-ku, Tokyo 104-0033  
Japan  
Tel: (81) 3-3523-3551  
Fax: (81) 3-3523-7581

## Atmel Operations

### Memory

2325 Orchard Parkway  
San Jose, CA 95131, USA  
Tel: 1(408) 441-0311  
Fax: 1(408) 436-4314

### Microcontrollers

2325 Orchard Parkway  
San Jose, CA 95131, USA  
Tel: 1(408) 441-0311  
Fax: 1(408) 436-4314

La Chantrerie  
BP 70602  
44306 Nantes Cedex 3, France  
Tel: (33) 2-40-18-18-18  
Fax: (33) 2-40-18-19-60

### ASIC/ASSP/Smart Cards

Zone Industrielle  
13106 Rousset Cedex, France  
Tel: (33) 4-42-53-60-00  
Fax: (33) 4-42-53-60-01

1150 East Cheyenne Mtn. Blvd.  
Colorado Springs, CO 80906, USA  
Tel: 1(719) 576-3300  
Fax: 1(719) 540-1759

Scottish Enterprise Technology Park  
Maxwell Building  
East Kilbride G75 0QR, Scotland  
Tel: (44) 1355-803-000  
Fax: (44) 1355-242-743

### RF/Automotive

Theresienstrasse 2  
Postfach 3535  
74025 Heilbronn, Germany  
Tel: (49) 71-31-67-0  
Fax: (49) 71-31-67-2340

1150 East Cheyenne Mtn. Blvd.  
Colorado Springs, CO 80906, USA  
Tel: 1(719) 576-3300  
Fax: 1(719) 540-1759

### Biometrics/Imaging/Hi-Rel MPU/ High Speed Converters/RF Datacom

Avenue de Rochepleine  
BP 123  
38521 Saint-Egreve Cedex, France  
Tel: (33) 4-76-58-30-00  
Fax: (33) 4-76-58-34-80

---

### Literature Requests

[www.atmel.com/literature](http://www.atmel.com/literature)

**Disclaimer:** Atmel Corporation makes no warranty for the use of its products, other than those expressly contained in the Company's standard warranty which is detailed in Atmel's Terms and Conditions located on the Company's web site. The Company assumes no responsibility for any errors which may appear in this document, reserves the right to change devices or specifications detailed herein at any time without notice, and does not make any commitment to update the information contained herein. No licenses to patents or other intellectual property of Atmel are granted by the Company in connection with the sale of Atmel products, expressly or by implication. Atmel's products are not authorized for use as critical components in life support devices or systems.

© Atmel Corporation 2003. All rights reserved.

Atmel® and combinations thereof are the registered trademarks of Atmel Corporation or its subsidiaries.

Other terms and product names may be the trademarks of others.



Printed on recycled paper.