



Chipsmall Limited consists of a professional team with an average of over 10 year of expertise in the distribution of electronic components. Based in Hongkong, we have already established firm and mutual-benefit business relationships with customers from,Europe,America and south Asia,supplying obsolete and hard-to-find components to meet their specific needs.

With the principle of "Quality Parts,Customers Priority,Honest Operation,and Considerate Service",our business mainly focus on the distribution of electronic components. Line cards we deal with include Microchip,ALPS,ROHM,Xilinx,Pulse,ON,Everlight and Freescale. Main products comprise IC,Modules,Potentiometer,IC Socket,Relay,Connector.Our parts cover such applications as commercial,industrial, and automotives areas.

We are looking forward to setting up business relationship with you and hope to provide you with the best service and solution. Let us make a better world for our industry!



Contact us

Tel: +86-755-8981 8866 Fax: +86-755-8427 6832

Email & Skype: info@chipsmall.com Web: www.chipsmall.com

Address: A1208, Overseas Decoration Building, #122 Zhenhua RD., Futian, Shenzhen, China



Using the EVK1010A:

This kit is for the evaluation and development of applications using the AT42QT1010-TSHR ('QT1010') 1 Channel QTouch™ Integrated Circuit (IC). This simple battery powered EVK1010A is configured with one capacitive key behind a 1mm acrylic front panel, where a touch is shown by the LED when KEY is touched.

Please visit <http://www.atmel.com/singletouch> for details of this (and similar) products, including links to relevant product datasheets.

- Insert the CR2032 3V battery provided into the battery holder on the EVK1010A. Ensure that the battery has the correct orientation or the EVK1010A will not work.
- Touch KEY and the LED will illuminate.
- Remove the touch from KEY and the LED will switch off.
- If KEY is touched for longer than ~60 seconds, LED will switch off. This is because the Max On-Duration has been exceeded and the QT1010 has recalibrated.

Fast/Low Power/SYNC Mode:

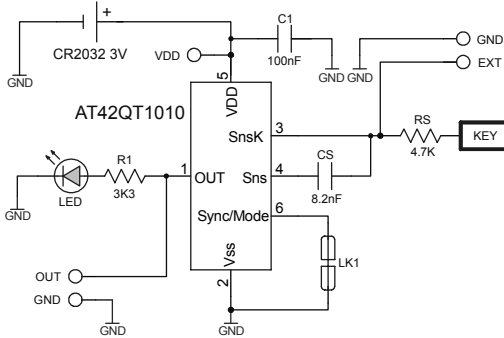
The QT1010 response speed can be changed on the EVK1010A for either a fast response or a slightly slower response (with the benefit of reduced power consumption) by changing the connection to Pin 6 of the QT1010.

The supplied default is Low Power mode. To run in Fast Mode, cut the track from LK1 to C1 and solder a wire link from LK1 to the available VDD connection on top edge of the EVK1010A.

For further details of Fast, Low Power and SYNC Mode, please refer to the QT1010 datasheet.

Power Supply:

An external power supply (1.8V - 5.5V) can be used instead of the battery by connecting to VDD and GND, but ensure that the battery is removed.



Sample Capacitor/Sensitivity:

CS is the sensing sample capacitor and can be replaced with different value X7R capacitor to change the sensitivity to touch of KEY (or an external electrode). Increasing the capacitor value will increase sensitivity and decreasing the capacitor value will decrease the sensitivity. (All flux residues should be removed after component replacement.)

External Electrode/Output:

The EVK1010A can be connected to an external electrode by soldering to pads EXT and GND. The output from the QT1010 can be accessed at OUT. If connected externally, remove R1.

Using the EVK1010A:

This kit is for the evaluation and development of applications using the AT42QT1010-TSHR ('QT1010') 1 Channel QTouch™ Integrated Circuit (IC). This simple battery powered EVK1010A is configured with one capacitive key behind a 1mm acrylic front panel, where a touch is shown by the LED when KEY is touched.

Please visit <http://www.atmel.com/singletouch> for details of this (and similar) products, including links to relevant product datasheets.

- Insert the CR2032 3V battery provided into the battery holder on the EVK1010A. Ensure that the battery has the correct orientation or the EVK1010A will not work.
- Touch KEY and the LED will illuminate.
- Remove the touch from KEY and the LED will switch off.
- If KEY is touched for longer than ~60 seconds, LED will switch off. This is because the Max On-Duration has been exceeded and the QT1010 has recalibrated.

Fast/Low Power/SYNC Mode:

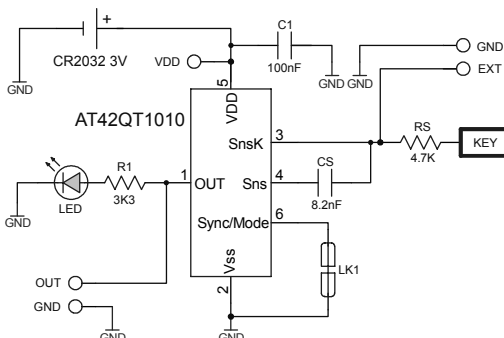
The QT1010 response speed can be changed on the EVK1010A for either a fast response or a slightly slower response (with the benefit of reduced power consumption) by changing the connection to Pin 6 of the QT1010.

The supplied default is Low Power mode. To run in Fast Mode, cut the track from LK1 to C1 and solder a wire link from LK1 to the available VDD connection on top edge of the EVK1010A.

For further details of Fast, Low Power and SYNC Mode, please refer to the QT1010 datasheet.

Power Supply:

An external power supply (1.8V - 5.5V) can be used instead of the battery by connecting to VDD and GND, but ensure that the battery is removed.

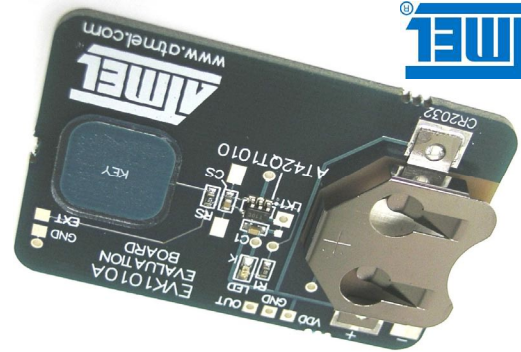


Sample Capacitor/Sensitivity:

CS is the sensing sample capacitor and can be replaced with different value X7R capacitor to change the sensitivity to touch of KEY (or an external electrode). Increasing the capacitor value will increase sensitivity and decreasing the capacitor value will decrease the sensitivity. (All flux residues should be removed after component replacement.)

External Electrode/Output:

The EVK1010A can be connected to an external electrode by soldering to pads EXT and GND. The output from the QT1010 can be accessed at OUT. If connected externally, remove R1.



EVK1010A USER GUIDE

EVK1010A Kit Contents:

1x EVK1010A Assembly	
1x CR2032 Battery, 3V, 235mAh	
2x Sample AT42QT1010-TSHR ICs	
1x EVK1010A User Guide (Please retain for reference)	
Packed by:	Dated:

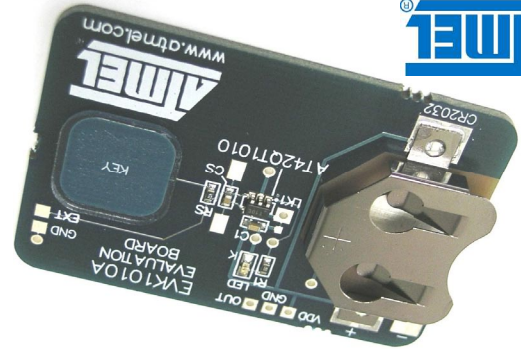
Touch Technology Division

1 Mitchell Point
Ensign Way, Hamble
Southampton SO31 4RF
United Kingdom
Tel: +44 (0)23 8056 5600
Fax: +44 (0)23 8045 3939

ATMEL
QTouch
www.atmel.com
touch@atmel.com
REV 100.0809



© 2009 Atmel Corporation. All rights reserved. Atmel®, Atmel logo and combinations thereof, and others are registered trademarks, QT™, QTouch™, HeartBeat™ and others are trademarks of Atmel Corporation or its subsidiaries. Other terms and product names may be registered trademarks or trademarks of others.



EVK1010A USER GUIDE

EVK1010A Kit Contents:

1x EVK1010A Assembly	
1x CR2032 Battery, 3V, 235mAh	
2x Sample AT42QT1010-TSHR ICs	
1x EVK1010A User Guide (Please retain for reference)	
Packed by:	Dated:

Touch Technology Division

1 Mitchell Point
Ensign Way, Hamble
Southampton SO31 4RF
United Kingdom
Tel: +44 (0)23 8056 5600
Fax: +44 (0)23 8045 3939

ATMEL
QTouch
www.atmel.com
touch@atmel.com
REV 100.0809



© 2009 Atmel Corporation. All rights reserved. Atmel®, Atmel logo and combinations thereof, and others are registered trademarks, QT™, QTouch™, HeartBeat™ and others are trademarks of Atmel Corporation or its subsidiaries. Other terms and product names may be registered trademarks or trademarks of others.