



Chipsmall Limited consists of a professional team with an average of over 10 year of expertise in the distribution of electronic components. Based in Hongkong, we have already established firm and mutual-benefit business relationships with customers from,Europe,America and south Asia,supplying obsolete and hard-to-find components to meet their specific needs.

With the principle of "Quality Parts,Customers Priority,Honest Operation,and Considerate Service",our business mainly focus on the distribution of electronic components. Line cards we deal with include Microchip,ALPS,ROHM,Xilinx,Pulse,ON,Everlight and Freescale. Main products comprise IC,Modules,Potentiometer,IC Socket,Relay,Connector.Our parts cover such applications as commercial,industrial, and automotives areas.

We are looking forward to setting up business relationship with you and hope to provide you with the best service and solution. Let us make a better world for our industry!



Contact us

Tel: +86-755-8981 8866 Fax: +86-755-8427 6832

Email & Skype: info@chipsmall.com Web: www.chipsmall.com

Address: A1208, Overseas Decoration Building, #122 Zhenhua RD., Futian, Shenzhen, China



REVISIONS					
REV	ECO	DESCRIPTION	DATE	BY	APPR
A1	-	FIRST RELEASE	May/22/17	Regan	Tommy
A2	-	MODIFY THE CURRENT RATING	Jul/10/17	White	Tommy

NOTES: UNLESS OTHERWISE SPECIFIED

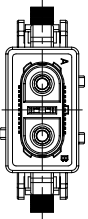
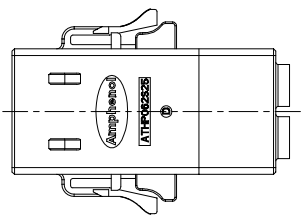
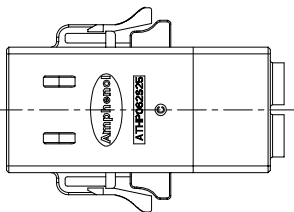
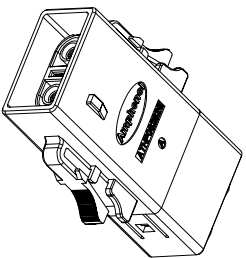
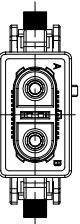
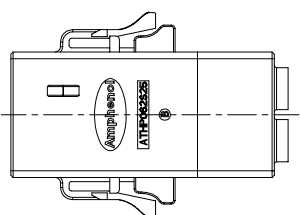
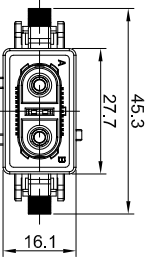
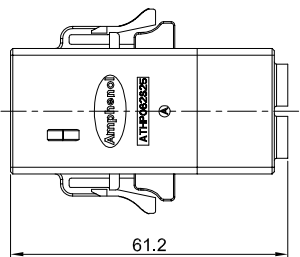
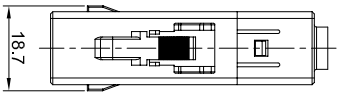
1. MATERIAL:

- 1.1 HOUSING: THERMOPLASTIC UL 94V0
- 1.2 SEAL: SILICONE RUBBER
- 1.3 POWER CONTACT: COPPER ALLOY, Tin PLATED
- 1.4 SHIELDING: COPPER ALLOY, NICKLE PLATED

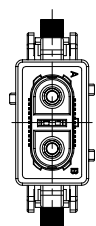
2. SPECIFICATIONS:

- 2.1 CURRENT RATING: 6.0mm2 (MS10B23XX) @35 AMPS
4.0mm² (SS12A1XX-10) @25 AMPS
2.5mm² (SS12A1XX) @20 AMPS
- "XX" DENOTES DIFFERENT PLATING.
- 2.2 VOLTAGE RATING: 1000 V AC/DC
- 2.3 OPERATING TEMPERATURE: 40°C TO +130°C
- 2.4 DIELECTRIC WITHSTANDING VOLTAGE: LESS THAN 2 MILLAMPS CURRENT LEAKAGE @ 3000 VOLTS AC.
- 2.5 INSULATION RESISTANCE: 500 MEGOHMS MIN@25±5°C.
- 2.6 DEGREE OF PROTECTION: IP67 (MATED CONDITION)
- 2.7 MATING CYCLE DURABILITY: 100 CYCLES
- 2.8 RoHS COMPLIANT

3. ALL DIMENSIONS ARE FOR REFERENCE USE ONLY.



C Key



D Key

PART NUMBER	Key type	Cable OD Range
ATHP062S25EEL-S1	A Key	
ATHP062S25EEL-B-S1	B Key	6.5-7.5 mm
ATHP062S25EEL-C-S1	C Key	
ATHP062S25EELD-S1	D Key	
ATHP062S25EEL-S2	A Key	
ATHP062S25EEL-B-S2	B Key	4.8-5.8 mm
ATHP062S25EEL-C-S2	C Key	
ATHP062S25EELD-S2	D Key	

QUANTITY	PART NUMBER	DESCRIPTION	ITEM
MATERIALS LIST			

UNLESS OTHERWISE SPECIFIED			
1) All dimensions are in millimeters.	SIGNATURES		
2) Tolerances are as follows:	DRAWN: [Signature]	DATE: Jul/10/17	
1 Pl. DEC A0.30	DESIGNED: [Signature]	DATE: Jul/10/17	
3 Pl. DEC A0.08	ENGINEER: [Signature]	DATE: Jul/10/17	
3) Note reference =	APPROVAL: Tommy	DATE: Jul/10/17	
MATERIAL SPECIFICATIONS:			
CUSTOMER: [Blank]			
THIS DRAWING IS SUPERSEDED BY ANY LATER DATED DRAWINGS. SPECIFICATIONS AND PERFORMANCE DATA ARE SUBJECT TO CHANGE WITHOUT NOTICE. THE MANUFACTURER ASSUMES NO RESPONSIBILITY FOR REPRODUCTION ERRORS. ALL DIMENSIONS ARE IN MILLIMETERS UNLESS OTHERWISE NOTED.			
PROCESS SPECIFICATIONS:			
NEXT ASSY: [Blank]			
SCALE: NONE		SHEET 1 OF 1	
SIZE: B		TYPE: C-	
DRAWING NO: ATHP062S25EEL-SX		REVISION: A2	
Amphenol Site Systems - www.amphenol-site.com 44724 Morley Drive Clinton Township, MI 48036 ATHP - PLUG, 2 PIN, HVIL WITH EMC SHIELDING			

TITLE

ATHP_PLUG,2 PIN,HVIL WITH EMC SHIELDING

DWG NO: ATHP062S25EEL-SX

REV: A2

SH: 1

OF: 1