



Chipsmall Limited consists of a professional team with an average of over 10 year of expertise in the distribution of electronic components. Based in Hongkong, we have already established firm and mutual-benefit business relationships with customers from,Europe,America and south Asia,supplying obsolete and hard-to-find components to meet their specific needs.

With the principle of “Quality Parts,Customers Priority,Honest Operation,and Considerate Service”,our business mainly focus on the distribution of electronic components. Line cards we deal with include Microchip,ALPS,ROHM,Xilinx,Pulse,ON,Everlight and Freescale. Main products comprise IC,Modules,Potentiometer,IC Socket,Relay,Connector.Our parts cover such applications as commercial,industrial, and automotives areas.

We are looking forward to setting up business relationship with you and hope to provide you with the best service and solution. Let us make a better world for our industry!



## Contact us

Tel: +86-755-8981 8866 Fax: +86-755-8427 6832

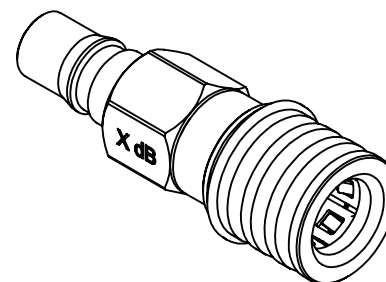
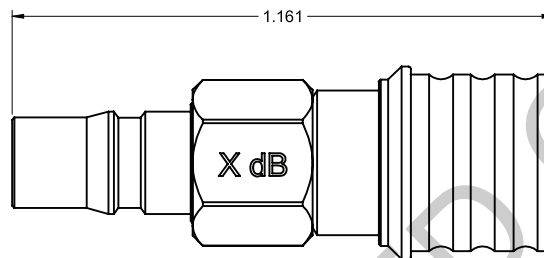
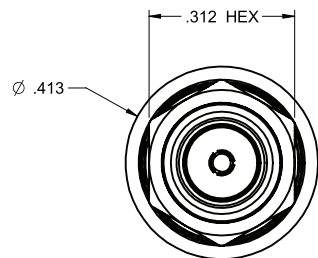
Email & Skype: info@chipsmall.com Web: www.chipsmall.com

Address: A1208, Overseas Decoration Building, #122 Zhenhua RD., Futian, Shenzhen, China



| PART NUMBER        | ATTENUATION "X" dB |
|--------------------|--------------------|
| ATT-0106-01-QMA-32 | 1                  |
| ATT-0106-02-QMA-32 | 2                  |
| ATT-0106-03-QMA-32 | 3                  |
| ATT-0106-06-QMA-32 | 6                  |
| ATT-0106-10-QMA-32 | 10                 |

|                                   |        |        |        |
|-----------------------------------|--------|--------|--------|
| DRAWING NO.<br>ATT-0106-XX-QMA-32 |        |        |        |
| <b>REVISIONS</b>                  |        |        |        |
| 1 RELEASE                         |        |        |        |
| 1-30-2011                         | R<br>S | B<br>Y | L<br>M |



**SPECIFICATION:**

1. ELECTRICAL RATING  
 IMPEDANCE: 50 OHMS  
 FREQUENCY RANGE: 0-6 GHz  
 ATTENUATION ACCURACY:

| dB   | DC-4 GHz | DC-4 GHz |
|------|----------|----------|
| 1-3  | ±0.3     | ±0.5     |
| 4-6  | ±0.4     | ±0.5     |
| 7-10 | ±0.5     | ±0.5     |

VSWR MAX.

| dB   | DC-2.5 GHz | 2.5-4 GHz | 4-6 GHz |
|------|------------|-----------|---------|
| 1-3  | 1.15:1     | 1.20:1    | 1.25:1  |
| 4-6  | 1.15:1     | 1.20:1    | 1.25:1  |
| 7-10 | 1.15:1     | 1.25:1    | 1.30:1  |

AVERAGE INPUT POWER: 2W MAX AT +25 CELSIUS DEGREE, DERATED LINEARLY TO 0.5W MAX AT +125 CELSIUS DEGREE.

2. MECHANICAL RATING  
 ENGAGEMENT FORCE: 8.0 LBS MAX.  
 DISENGAGEMENT FORCE: 2.5 LBS MIN.  
 COUPLING MECHANISM RETENTION FORCE: 13.5 LBS MIN.  
 CONNECTOR DURABILITY: 500 CYCLES MIN.

3. ENVIRONMENTAL RATING  
 TEMPERATURE RANGE: -55 TO 125 CELSIUS DEGREE  
 SHOCK: MIL-STD-202, METHOD 213, CONDITION I.  
 THERMAL SHOCK: MIL-STD-202, METHOD 107, CONDITION B.  
 VIBRATION: MIL-STD-202, METHOD 204, CONDITION D.

4. MATERIAL AND FINISH  
 BODY/NUT: BRASS, TRI-ALLOY PLATED.  
 COUPLING SPRING: BERYLLIUM COPPER, TRI-ALLOY PLATED.  
 FEMALE CONTACT: BERYLLIUM COPPER, GOLD PLATED.  
 MALE CONTACT: BRASS, GOLD PLATED.  
 INSULATOR: TEFLON.

THIS DRAWING TO BE INTERPRETED  
 PER ANSI Y 14.5M - 1994

**COMPANY CONFIDENTIAL**

|                                      |         |  |                   |
|--------------------------------------|---------|--|-------------------|
| TOLERANCE UNLESS OTHERWISE SPECIFIED |         | DRAWN BY<br>R.SHEN   | DATE<br>1-28-2011 |
| DECIMALS                             | INCH    | CHECKED BY<br>B.YU   | DATE<br>1-28-2011 |
| X.X                                  | ± 0.010 | APPROVED BY<br>L.MA  | DATE<br>1-30-2011 |
| X.XX                                 | ± 0.005 | U/M  | INCH              |
| X.XXX                                | ± 0.003 |  |                   |
| ANGLES                               | ± 0.5°  | THIS DRAWING WAS PRODUCED BY COMPUTER,<br>DO NOT SCALE DRAWING OR UPDATE MANUALLY. |                   |

|   |                                   |
|---|-----------------------------------|
|   |                                   |
| <b>cinch</b><br><small>CONNECTIVITY SOLUTIONS</small><br><small>a bel group</small> |                                   |
| <b>TITLE</b><br>QMA 6 GHZ ATTENUATOR, PLUG TO JACK, HEX BODY                        |                                   |
| SHEET<br>1 OF 1   | DRAWING NO.<br>ATT-0106-XX-QMA-32 |
| SIZE<br>C   |                                   |