



Chipsmall Limited consists of a professional team with an average of over 10 year of expertise in the distribution of electronic components. Based in Hongkong, we have already established firm and mutual-benefit business relationships with customers from,Europe,America and south Asia,supplying obsolete and hard-to-find components to meet their specific needs.

With the principle of “Quality Parts,Customers Priority,Honest Operation,and Considerate Service”,our business mainly focus on the distribution of electronic components. Line cards we deal with include Microchip,ALPS,ROHM,Xilinx,Pulse,ON,Everlight and Freescale. Main products comprise IC,Modules,Potentiometer,IC Socket,Relay,Connector.Our parts cover such applications as commercial,industrial, and automotives areas.

We are looking forward to setting up business relationship with you and hope to provide you with the best service and solution. Let us make a better world for our industry!



Contact us

Tel: +86-755-8981 8866 Fax: +86-755-8427 6832

Email & Skype: info@chipsmall.com Web: www.chipsmall.com

Address: A1208, Overseas Decoration Building, #122 Zhenhua RD., Futian, Shenzhen, China



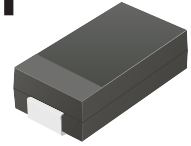
ATV06B5V0-HF Thru. ATV06B441-HF

Working Peak Reverse voltage: 5.0 ~ 440Volts

Power Dissipation: 600 Watts

RoHS Device

Halogen Free

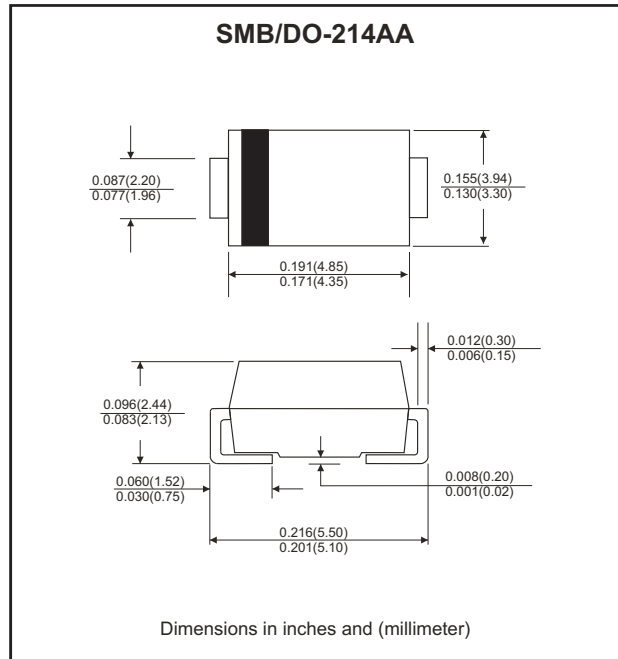


Features

- Glass passivated chip.
- 600W peak pulse power capability with a 10/1000 μ s waveform, repetitive rate (duty cycle): 0.01%.
- Low leakage.
- Uni and Bidirectional unit.
- Excellent clamping capability.
- Very fast response time.
- Comply with AEC-Q101.

Mechanical Data

- Case: JEDEC DO-214AA, molded plastic.
- Epoxy: UL 94V-0 rate flame retardant.
- Terminals: solderable per MIL-STD-750, method 2026
- Polarity: Color band denotes cathode end except Bipolar.
- Mounting position: Any.
- Weight: 0.093 gram approx.



Maximum Ratings and Electrical Characteristics

Rating at 25°C ambient temperature unless otherwise specified.

Single phase, half wave, 60Hz, resistive or inductive load.

For capacitive load, derate current by 20%.

Parameter	Symbol	Value	Units
Peak power dissipation with a 10/1000 μ s waveform (Note 1)	P _{PP}	600	Watts
Peak pulse current with a 10/1000 μ s waveform (Note 1)	I _{PP}	See Next Table	A
Power dissipation on infinite heatsink at T _L =75°C	P _D	5.0	Watts
Peak forward surge current, 8.3ms single half sine-wave unidirectional only (Note 2)	I _{FSM}	100	A
Maximum instantaneous forward voltage at 50 A for unidirectional only (Note 3)	V _F	3.5 / 5.0	V
Operating junction and Storage temperature range	T _J , T _{STG}	-55 to +150	°C

Note:

1. Non-repetitive current pulse per Fig. 5 and derated above T_A=25°C per Fig.1
2. Measured on 8.3 ms single half sine-wave or equivalent square wave, duty cycle=4 pulses per minute maximum.
3. V_F<3.5V for devices of V_{BR} <200V and V_F <5.0V for devices of V_{BR} >201V

Company reserves the right to improve product design , functions and reliability without notice.

REV:A

Rating and Characteristics Curves (ATV06B5V0-HF Thru. ATV06B441-HF)

Fig.1 Pulse Derating Curve

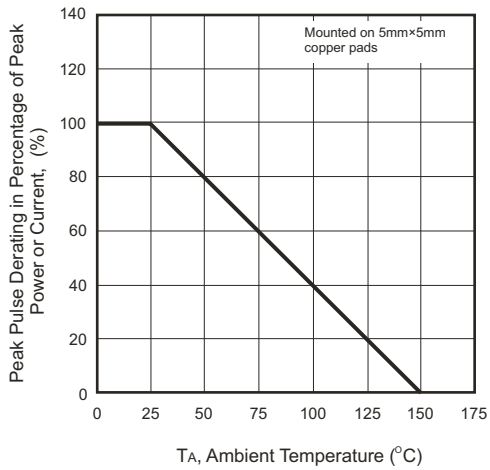


Fig.2 Maximum Non-Repetitive Surge Current

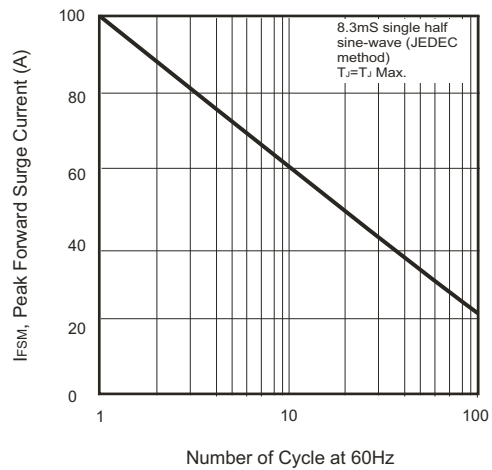


Fig.3 Steady State Power Derating Curve

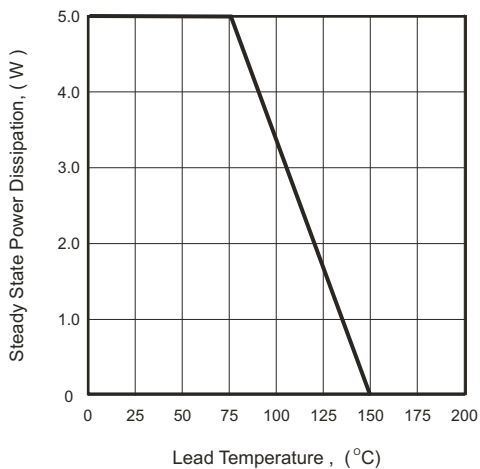


Fig.4 Peak Pulse Power Rating Curve

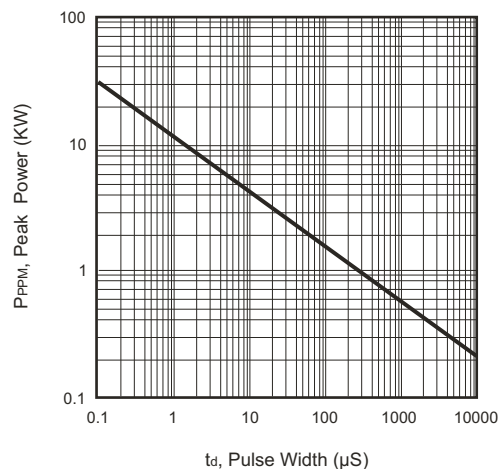


Fig.5 Pulse Waveform

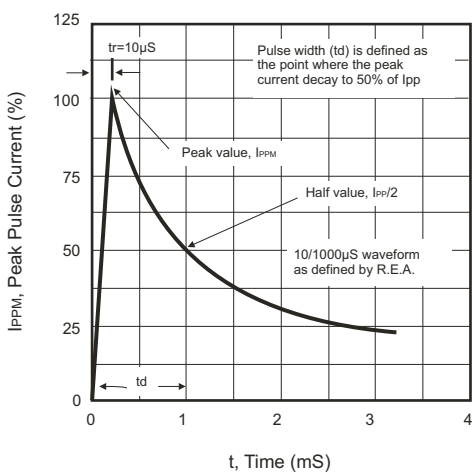
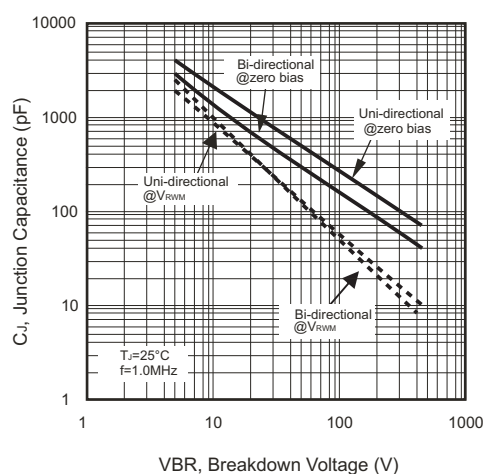


Fig.6 Typical Junction Capacitance



Company reserves the right to improve product design, functions and reliability without notice.

SMD Transient Voltage Suppressor



Electrical Characteristics (ATV06B5V0-HF Thru. ATV06B441-HF)

Part No.	Absolute Maximum Rating (TA =25°C)					Electrical Characteristic (TA =25°C)				
	V _{RWM}	V _{BR} Min.	V _{BR} Max.	I _T	I _{FSM}	Max V _C		I _R @V _{RWM}	Marking Code	
	(V)	(V)	(V)	(mA)	(A)@8.3mS	(V)	I _{PP} (A)	(μA)	UNI	BI
ATV06B5V0J(B)-HF	5.00	6.40	7.00	10	100	9.2	65.22	800	KE	AE
ATV06B6V0J(B)-HF	6.00	6.67	7.37	10	100	10.3	58.25	800	KG	AG
ATV06B6V5J(B)-HF	6.50	7.22	7.98	10	100	11.2	53.57	500	KK	AK
ATV06B7V0J(B)-HF	7.00	7.78	8.60	10	100	12.0	50.00	200	KM	AM
ATV06B7V5J(B)-HF	7.50	8.33	9.21	1	100	12.9	46.51	100	KP	AP
ATV06B8V0J(B)-HF	8.00	8.89	9.83	1	100	13.6	44.12	50	KR	AR
ATV06B8V5J(B)-HF	8.50	9.44	10.40	1	100	14.4	41.67	10	KT	AT
ATV06B9V0J(B)-HF	9.00	10.00	11.10	1	100	15.4	38.96	5	KV	AV
ATV06B100J(B)-HF	10.0	11.10	12.30	1	100	17.0	35.29	5	KX	AX
ATV06B110J(B)-HF	11.0	12.20	13.50	1	100	18.2	32.97	5	KZ	AZ
ATV06B120J(B)-HF	12.0	13.30	14.70	1	100	19.9	30.15	5	LE	BE
ATV06B130J(B)-HF	13.0	14.40	15.90	1	100	21.5	27.91	5	LG	BG
ATV06B140J(B)-HF	14.0	15.60	17.20	1	100	23.2	25.86	5	LK	BK
ATV06B150J(B)-HF	15.0	16.70	18.50	1	100	24.4	24.59	5	LM	BM
ATV06B160J(B)-HF	16.0	17.80	19.70	1	100	26.0	23.08	5	LP	BP
ATV06B170J(B)-HF	17.0	18.90	20.90	1	100	27.6	21.74	5	LR	BR
ATV06B180J(B)-HF	18.0	20.00	22.10	1	100	29.2	20.55	5	LT	BT
ATV06B190J(B)-HF	19.0	21.10	23.30	1	100	30.8	19.49	5	LB	BB
ATV06B200J(B)-HF	20.0	22.20	24.50	1	100	32.4	18.52	5	LV	BV
ATV06B220J(B)-HF	22.0	24.40	26.90	1	100	35.5	16.90	5	LX	BX
ATV06B240J(B)-HF	24.0	26.70	29.50	1	100	38.9	15.42	5	LZ	BZ
ATV06B260J(B)-HF	26.0	28.90	31.90	1	100	42.1	14.25	5	ME	CE
ATV06B280J(B)-HF	28.0	31.10	34.40	1	100	45.4	13.22	5	MG	CG
ATV06B300J(B)-HF	30.0	33.30	36.80	1	100	48.4	12.40	5	MK	CK
ATV06B330J(B)-HF	33.0	36.70	40.60	1	100	53.3	11.26	5	MM	CM
ATV06B360J(B)-HF	36.0	40.00	44.20	1	100	58.1	10.33	5	MP	CP
ATV06B400J(B)-HF	40.0	44.40	49.10	1	100	64.5	9.30	5	MR	CR
ATV06B430J(B)-HF	43.0	47.80	52.80	1	100	69.4	8.65	5	MT	CT
ATV06B450J(B)-HF	45.0	50.00	55.30	1	100	72.7	8.25	5	MV	CV
ATV06B480J(B)-HF	48.0	53.30	58.90	1	100	77.4	7.75	5	MX	CX
ATV06B510J(B)-HF	51.0	56.70	62.70	1	100	82.4	7.28	5	MZ	CZ
ATV06B540J(B)-HF	54.0	60.00	66.30	1	100	87.1	6.89	5	NE	DE
ATV06B580J(B)-HF	58.0	64.40	71.20	1	100	93.6	6.41	5	NG	DG
ATV06B600J(B)-HF	60.0	66.70	73.70	1	100	96.8	6.20	5	NK	DK
ATV06B640J(B)-HF	64.0	71.10	78.60	1	100	103.0	5.83	5	NM	DM
ATV06B700J(B)-HF	70.0	77.80	86.00	1	100	113.0	5.31	5	NP	DP
ATV06B750J(B)-HF	75.0	83.30	92.10	1	100	121.0	4.96	5	NR	DR
ATV06B780J(B)-HF	78.0	86.70	95.80	1	100	126.0	4.76	5	NT	DT
ATV06B800J(B)-HF	80.0	88.80	97.60	1	100	129.6	4.63	5	NB	DB
ATV06B850J(B)-HF	85.0	94.40	104.00	1	100	137.0	4.38	5	NV	DV
ATV06B900J(B)-HF	90.0	100.00	111.00	1	100	146.0	4.11	5	NX	DX
ATV06B101J(B)-HF	100.0	111.00	123.00	1	100	162.0	3.70	5	NZ	DZ
ATV06B111J(B)-HF	110.0	122.00	135.00	1	100	177.0	3.39	5	PE	EE
ATV06B121J(B)-HF	120.0	133.00	147.00	1	100	193.0	3.11	5	PG	EG
ATV06B131J(B)-HF	130.0	144.00	159.00	1	100	209.0	2.87	5	PK	EK
ATV06B141J(B)-HF	140.0	155.00	171.00	1	100	226.8	2.65	5	PB	EB
ATV06B151J(B)-HF	150.0	167.00	185.00	1	100	243.0	2.47	5	PM	EM
ATV06B161J(B)-HF	160.0	178.00	197.00	1	100	259.0	2.32	5	PP	EP
ATV06B171J(B)-HF	170.0	189.00	209.00	1	100	275.0	2.18	5	PR	ER
ATV06B181J(B)-HF	180.0	200.00	220.00	1	100	291.6	2.06	5	PT	ET
ATV06B191J(B)-HF	190.0	211.00	232.00	1	100	307.8	1.95	5	PV	EV
ATV06B201J(B)-HF	200.0	224.00	247.00	1	100	324.0	1.85	5	PW	EW

Company reserves the right to improve product design , functions and reliability without notice.

REV:A

SMD Transient Voltage Suppressor



Electrical Characteristics (ATV06B5V0-HF Thru. ATV06B441-HF)

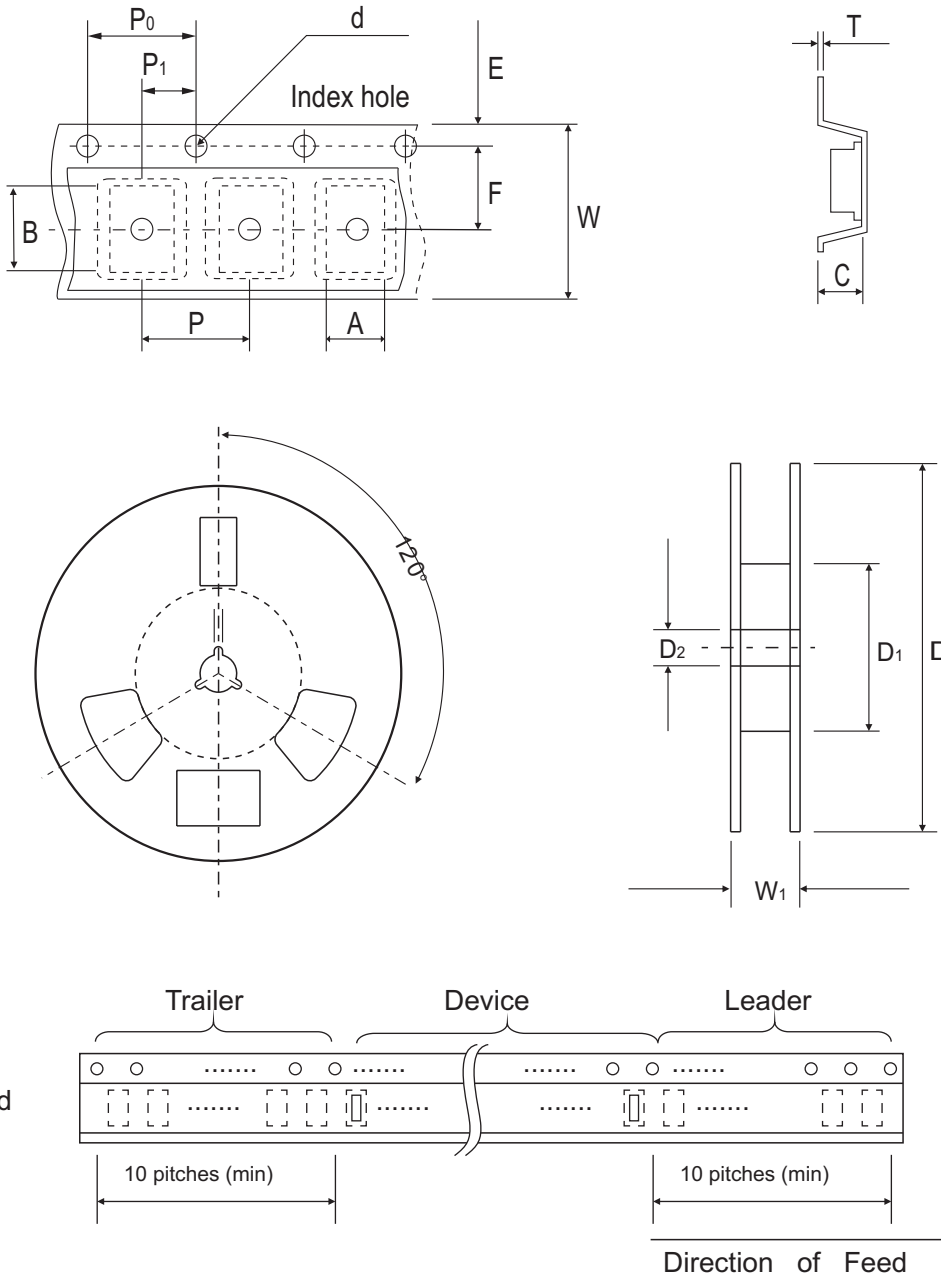
Part No.	Absolute Maximum Rating (T _A =25°C)					Electrical Characteristic (T _A =25°C)				
	V _{RWM}	V _{BR} Min.	V _{BR} Max.	I _T	I _{FSM}	Max V _C		I _R @V _{RWM}	Marking Code	
	(V)	(V)	(V)	(mA)	(A)@8.3mS	(V)	I _{PP} (A)	(uA)	UNI	BI
ATV06B221J(B)-HF	220.0	246.00	272.00	1	100	356.0	1.69	5	PX	EX
ATV06B251J(B)-HF	250.0	279.00	309.00	1	100	405.0	1.48	5	PZ	EZ
ATV06B301J(B)-HF	300.0	335.00	371.00	1	100	486.0	1.23	5	QE	FE
ATV06B351J(B)-HF	350.0	391.00	432.00	1	100	567.0	1.06	5	QG	FG
ATV06B401J(B)-HF	400.0	447.00	494.00	1	100	648.0	0.93	5	QK	FK
ATV06B441J(B)-HF	440.0	492.00	543.00	1	100	713.0	0.84	5	QM	FM

Note:

- 1) Suffix J denotes 5% tolerance devices.
- 2) Suffix B after part number to specify bi-directional devices.
- 3) For Bi-Directional devices having V_R of 10 volts and under, the I_R limit is double.

Company reserves the right to improve product design , functions and reliability without notice.

Reel Taping Specification



DO-214AA (SMB)	SYMBOL	A	B	C	d	D	D1	D2
	(mm)	3.67 ± 0.10	5.69 ± 0.10	4.50 (max)	1.55 ± 0.10	330.00	50.00 (min)	13.00 ± 0.20
	(inch)	0.144 ± 0.004	0.224 ± 0.004	0.177 (max)	0.061 ± 0.004	13.000	1.969 (min)	0.512 ± 0.008

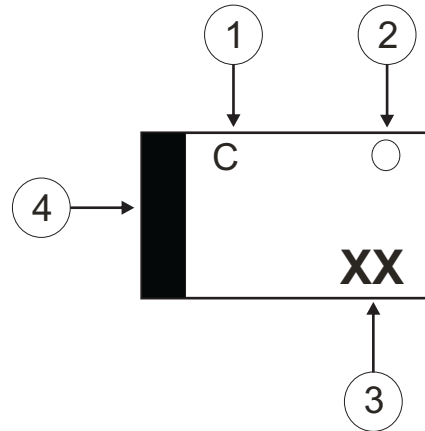
DO-214AA (SMB)	SYMBOL	E	F	P	P0	P1	W	W1
	(mm)	1.75 ± 0.10	5.50 ± 0.05	8.00 ± 0.10	4.00 ± 0.10	2.00 ± 0.05	12.00 ± 0.30	18.40 (max)
	(inch)	0.069 ± 0.004	0.217 ± 0.002	0.315 ± 0.004	0.157 ± 0.004	0.079 ± 0.002	0.472 ± 0.012	0.724 (max)

Company reserves the right to improve product design, functions and reliability without notice.

Marking Code

1. C: COMCHIP
2. ○: Package

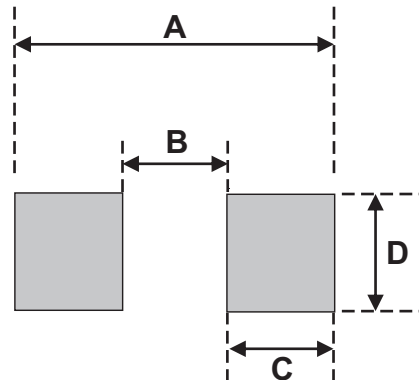
○	PKG
A	SMA
B	SMB
C	SMC



3. XX: Marking code (see Page. 3~4)
4. █ Cathod Band

Suggested PAD Layout

SIZE	DO-214AA(SMB)	
	(mm)	(inch)
A	5.60	0.220
B	2.16 MAX	0.085 MAX
C	1.52 MIN	0.060 MIN
D	2.18 MIN	0.086 MIN



Standard Packaging

Case Type	REEL PACK	
	REEL (pcs)	Reel Size (inch)
DO-214AA (SMB)	3,000	13

Company reserves the right to improve product design , functions and reliability without notice.