



Chipsmall Limited consists of a professional team with an average of over 10 year of expertise in the distribution of electronic components. Based in Hongkong, we have already established firm and mutual-benefit business relationships with customers from,Europe,America and south Asia,supplying obsolete and hard-to-find components to meet their specific needs.

With the principle of "Quality Parts,Customers Priority,Honest Operation,and Considerate Service",our business mainly focus on the distribution of electronic components. Line cards we deal with include Microchip,ALPS,ROHM,Xilinx,Pulse,ON,Everlight and Freescale. Main products comprise IC,Modules,Potentiometer,IC Socket,Relay,Connector.Our parts cover such applications as commercial,industrial, and automotives areas.

We are looking forward to setting up business relationship with you and hope to provide you with the best service and solution. Let us make a better world for our industry!



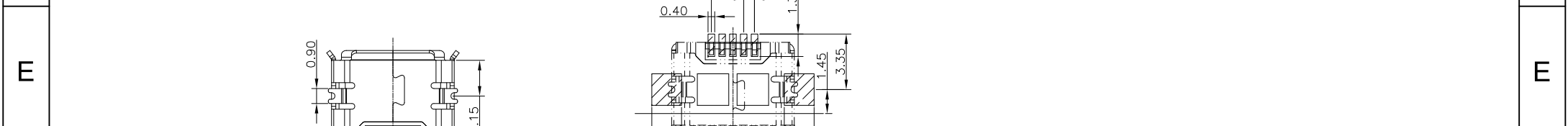
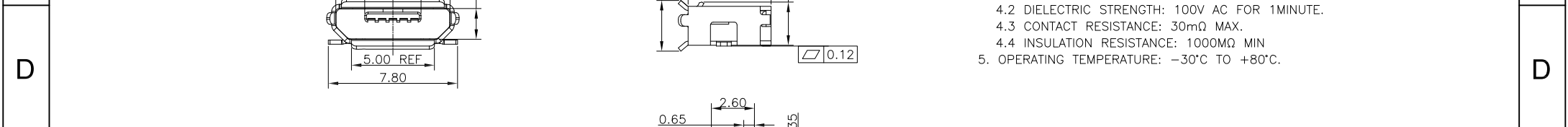
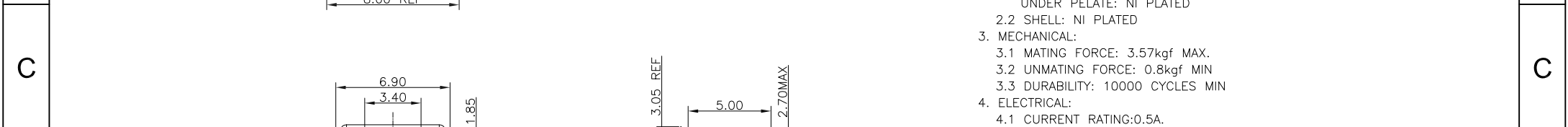
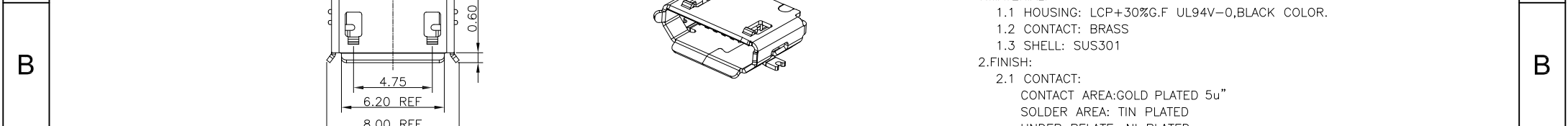
Contact us

Tel: +86-755-8981 8866 Fax: +86-755-8427 6832

Email & Skype: info@chipsmall.com Web: www.chipsmall.com

Address: A1208, Overseas Decoration Building, #122 Zhenhua RD., Futian, Shenzhen, China





Recommended P.C.Board Layout
(Tolerance:±0.05)

NOTES:
 1.MATERIAL:
 1.1 HOUSING: LCP+30%G.F UL94V-0,BLACK COLOR.
 1.2 CONTACT: BRASS
 1.3 SHELL: SUS301
 2.FINISH:
 2.1 CONTACT:
 CONTACT AREA:GOLD PLATED 5u"
 SOLDER AREA: TIN PLATED
 UNDER PELATE: NI PLATED
 2.2 SHELL: NI PLATED
 3. MECHANICAL:
 3.1 MATING FORCE: 3.57kgf MAX.
 3.2 UNMATING FORCE: 0.8kgf MIN
 3.3 DURABILITY: 10000 CYCLES MIN
 4. ELECTRICAL:
 4.1 CURRENT RATING:0.5A.
 4.2 DIELECTRIC STRENGTH: 100V AC FOR 1MINUTE.
 4.3 CONTACT RESISTANCE: 30mΩ MAX.
 4.4 INSULATION RESISTANCE: 1000MΩ MIN
 5. OPERATING TEMPERATURE: -30°C TO +80°C.

RoHS compliant
unit:mm

Scale	FREE						Date	Name	Customer-No.
TOLERANCE						Drawn	23.10.2013	Ray	
X.X	±0.30					Approved	23.10.2013	Ray	ASSMANN WSW-No.
X.XX	±0.20								AU-Y1009
X.XXX	±0.10								Drawing-No.
DIM	TOL								ASS 6064 CO
X.°	±5°								rev00
Angle	TOL	Ⓒ	Drawn	23.10.2013	Ray			Replace	Sheet
		Id.	Modification	Date	Name			1 of 1	