



Chipsmall Limited consists of a professional team with an average of over 10 year of expertise in the distribution of electronic components. Based in Hongkong, we have already established firm and mutual-benefit business relationships with customers from,Europe,America and south Asia,supplying obsolete and hard-to-find components to meet their specific needs.

With the principle of “Quality Parts,Customers Priority,Honest Operation,and Considerate Service”,our business mainly focus on the distribution of electronic components. Line cards we deal with include Microchip,ALPS,ROHM,Xilinx,Pulse,ON,Everlight and Freescale. Main products comprise IC,Modules,Potentiometer,IC Socket,Relay,Connector.Our parts cover such applications as commercial,industrial, and automotives areas.

We are looking forward to setting up business relationship with you and hope to provide you with the best service and solution. Let us make a better world for our industry!



Contact us

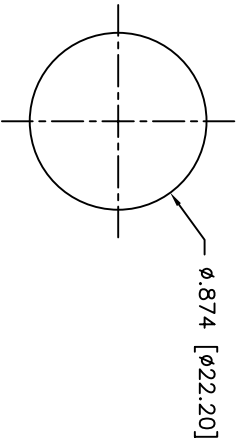
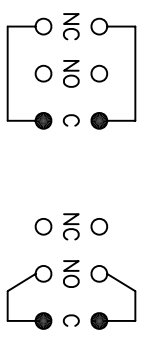
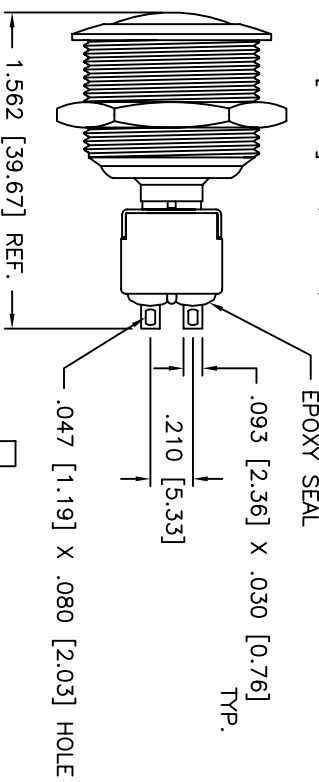
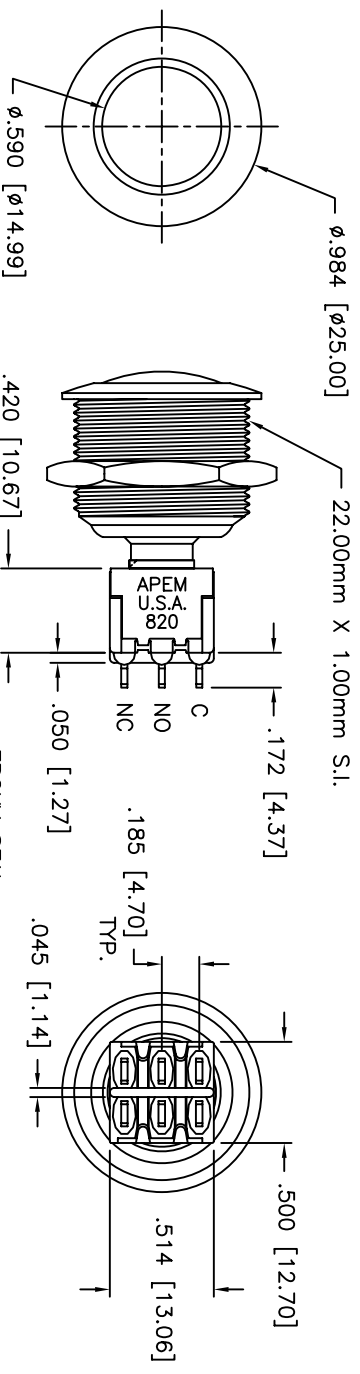
Tel: +86-755-8981 8866 Fax: +86-755-8427 6832

Email & Skype: info@chipsmall.com Web: www.chipsmall.com

Address: A1208, Overseas Decoration Building, #122 Zhenhua RD., Futian, Shenzhen, China



DATE	SYM	REVISION RECORD	DWN.	CK.



PANEL CUT-OUT

APEM CONFIDENTIAL
 THIS DOCUMENT CONTAINS INFORMATION WHICH IS THE EXCLUSIVE PROPERTY OF APEM COMPONENTS, INC. DISTRIBUTION, REPRODUCTION OR USE BY OTHERS IS NOT PERMITTED WITHOUT THE EXPRESS WRITTEN CONSENT OF APEM COMPONENTS, INC.

	TOLERANCES (EXCEPT AS NOTED)	DECIMAL	± .012 [0.30]
	FRACTIONAL	± —	ANGULAR
	TITLE	AV02820KMZQ	
DATE	05/03/99	DRAWING NUMBER	B1521
REV	—	DRAWN	PJD
		APPROVED	

DESCRIPTION: DOUBLE POLE DOUBLE THROW
 MOMENTARY SNAP-ACTING PUSH-BUTTON
 ANTI-VANDAL SWITCH

SPECIFICATIONS:

CONTACT RATING: 6A @ 125VAC, 3A @ 250VAC,
 or 7A @ 30VDC

ELECTRICAL LIFE: 60,000 CYCLES MIN.
 INITIAL CONTACT RESISTANCE: 20 MOHMS MAX.
 at 3VDC, 0.1A

INSULATION RESISTANCE: > 200,000 MOHMS
 BETWEEN TERMINALS AND CASE GROUND
 DIELECTRIC STRENGTH: > 1,000VAC FOR 1 MIN.
 BETWEEN TERMINALS AND CASE GROUND
 OPERATING TEMPERATURE RANGE: -30°C to +80°C

Q.A. INSPECT
 △ DESIGNATES CRITICAL DIMENSION

● = COMMON
 SCHEMATIC