



Chipsmall Limited consists of a professional team with an average of over 10 year of expertise in the distribution of electronic components. Based in Hongkong, we have already established firm and mutual-benefit business relationships with customers from,Europe,America and south Asia,supplying obsolete and hard-to-find components to meet their specific needs.

With the principle of “Quality Parts,Customers Priority,Honest Operation,and Considerate Service”,our business mainly focus on the distribution of electronic components. Line cards we deal with include Microchip,ALPS,ROHM,Xilinx,Pulse,ON,Everlight and Freescale. Main products comprise IC,Modules,Potentiometer,IC Socket,Relay,Connector.Our parts cover such applications as commercial,industrial, and automotives areas.

We are looking forward to setting up business relationship with you and hope to provide you with the best service and solution. Let us make a better world for our industry!



Contact us

Tel: +86-755-8981 8866 Fax: +86-755-8427 6832

Email & Skype: info@chipsmall.com Web: www.chipsmall.com

Address: A1208, Overseas Decoration Building, #122 Zhenhua RD., Futian, Shenzhen, China



AV series

Security pushbutton switches •
 Ø 19 mm • momentary NC/NO



DISTINCTIVE FEATURES

- Momentary NC/NO
- Long life
- Sealed to IP65 and IP69K



ENVIRONMENTAL SPECIFICATIONS

- Front panel sealing : IP65 and IP69K according to IEC 60529
- Operating temperature : -20 °C to +85 °C (-4 °F to +185 °F)



ELECTRICAL SPECIFICATIONS

- Max. current/voltage rating with resistive load :
 5 A 250 VAC - 5 A 125 VAC - 6,000 cycles
 5 A 15 VDC - 3 A 30 VDC - 50,000 cycles
- Initial contact resistance : 100 mΩ max.
- Insulation resistance : 1,000 mΩ min. at 500 VDC
- Dielectric strength : 2,000 Vrms 50 Hz min. between terminals and frame



GENERAL SPECIFICATIONS

- Torque : 5 Nm min. - 14 Nm max. applied to nut
- Panel thickness : 1 (.039) to 9 mm (.354) max.
- Low level or mechanical life : 1,000,000 cycles



MATERIALS

- Case : PA 6/6
- Contacts : silver
- Bushing : stainless steel (std)
- Actuator : stainless steel (std)

APEM products may be recycled at end-of-life for the re-claiming of valuable metal components.



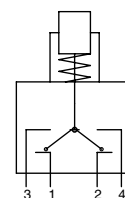
MOUNTING

- Panel cut-out : Ø 19.2 mm (.755)
- Min. pitch for matrix mounting : 30 mm x 30 mm (1.181x1.181)

The company reserves the right to change specifications without notice.



ELECTRICAL FUNCTIONS

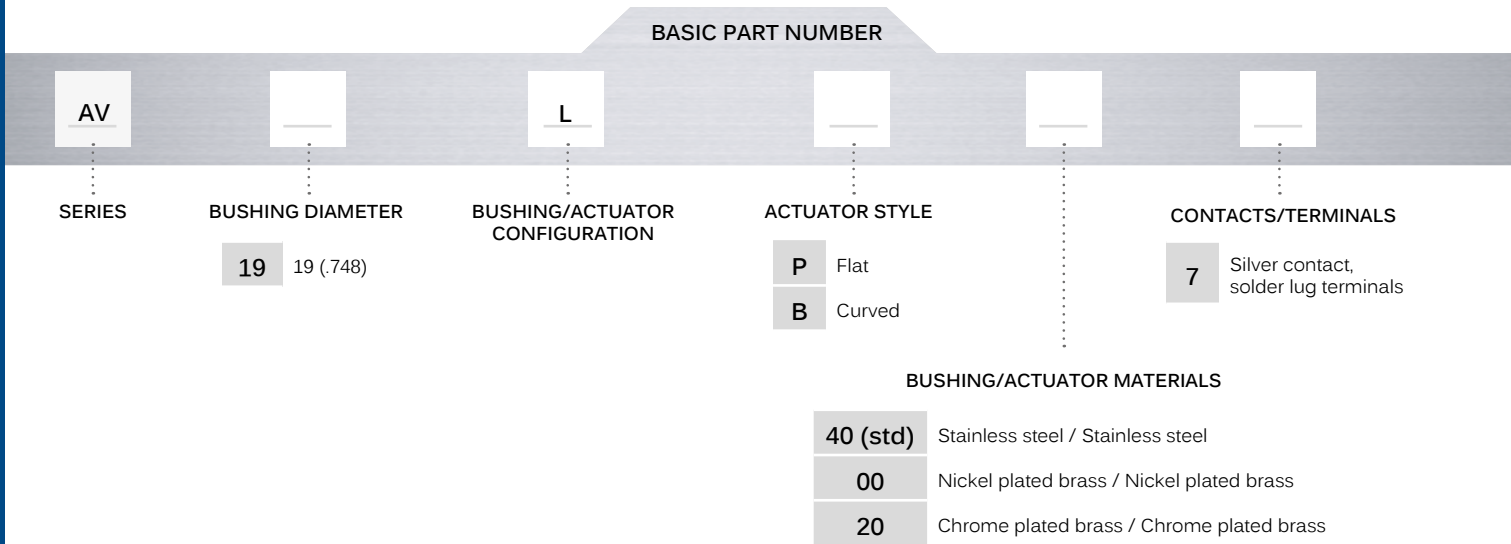


Combined NC/NO


AV series

Security pushbutton switches • Ø 19 mm • momentary NC/NO

BUILD YOUR PART NUMBER



ABOUT THIS SERIES

 **Mounting accessories:** standard hardware supplied : 1 hex nut and 1 O-ring. Standard and special hardware is presented in the "Hardware" section of website.

SOLDER LUG TERMINALS

