



Chipsmall Limited consists of a professional team with an average of over 10 year of expertise in the distribution of electronic components. Based in Hongkong, we have already established firm and mutual-benefit business relationships with customers from,Europe,America and south Asia,supplying obsolete and hard-to-find components to meet their specific needs.

With the principle of “Quality Parts,Customers Priority,Honest Operation,and Considerate Service”,our business mainly focus on the distribution of electronic components. Line cards we deal with include Microchip,ALPS,ROHM,Xilinx,Pulse,ON,Everlight and Freescale. Main products comprise IC,Modules,Potentiometer,IC Socket,Relay,Connector.Our parts cover such applications as commercial,industrial, and automotives areas.

We are looking forward to setting up business relationship with you and hope to provide you with the best service and solution. Let us make a better world for our industry!



Contact us

Tel: +86-755-8981 8866 Fax: +86-755-8427 6832

Email & Skype: info@chipsmall.com Web: www.chipsmall.com

Address: A1208, Overseas Decoration Building, #122 Zhenhua RD., Futian, Shenzhen, China



AV series

Security pushbutton switches • Ø 22 or 24 mm •
with large actuator • momentary NC+NO



DISTINCTIVE FEATURES

- Large actuator
- Low profile option
- Momentary (combined NC+NO)
- Anodized actuators
- Sealed to IP65



ENVIRONMENTAL SPECIFICATIONS

- Front panel sealing : IP65 according to IEC 60529
- Operating temperature : -20°C to +55°C (-4 °F to +131 °F)



ELECTRICAL SPECIFICATIONS

- Max. current/voltage rating with resistive load (microswitch) : 5 A 250 VAC
- Initial contact resistance : 100 mΩ max.
- Insulation resistance : 1,000 MΩ min. at 500 VDC
- Dielectric strength : 2,000 Vrms 50 Hz min. between terminals and frame
- Electrical life : 1,000,000 cycles at 1 A 250 VAC
100,000 cycles at full load



GENERAL SPECIFICATIONS

- Torque : 5 Nm min. - 14 Nm max. applied to nut
- Panel thickness : 1 (.039) to 6 mm (.236) max.
- Low level or mechanical life : 1,000,000 cycles
- Hand soldering : 300 °C (572 °F), 5 sec. max.



MATERIALS

- Case : polyester, glass filled
- Contacts : silver/nickel alloy
- Bushing and actuator : see next page.

The company reserves the right to change specifications without notice.

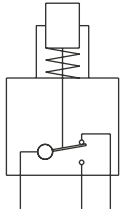


AV series

Security pushbutton switches •
Ø 22 or 24 mm • with large actuator • momentary NC+NO



ELECTRICAL FUNCTIONS



Combined NC+NO



MOUNTING

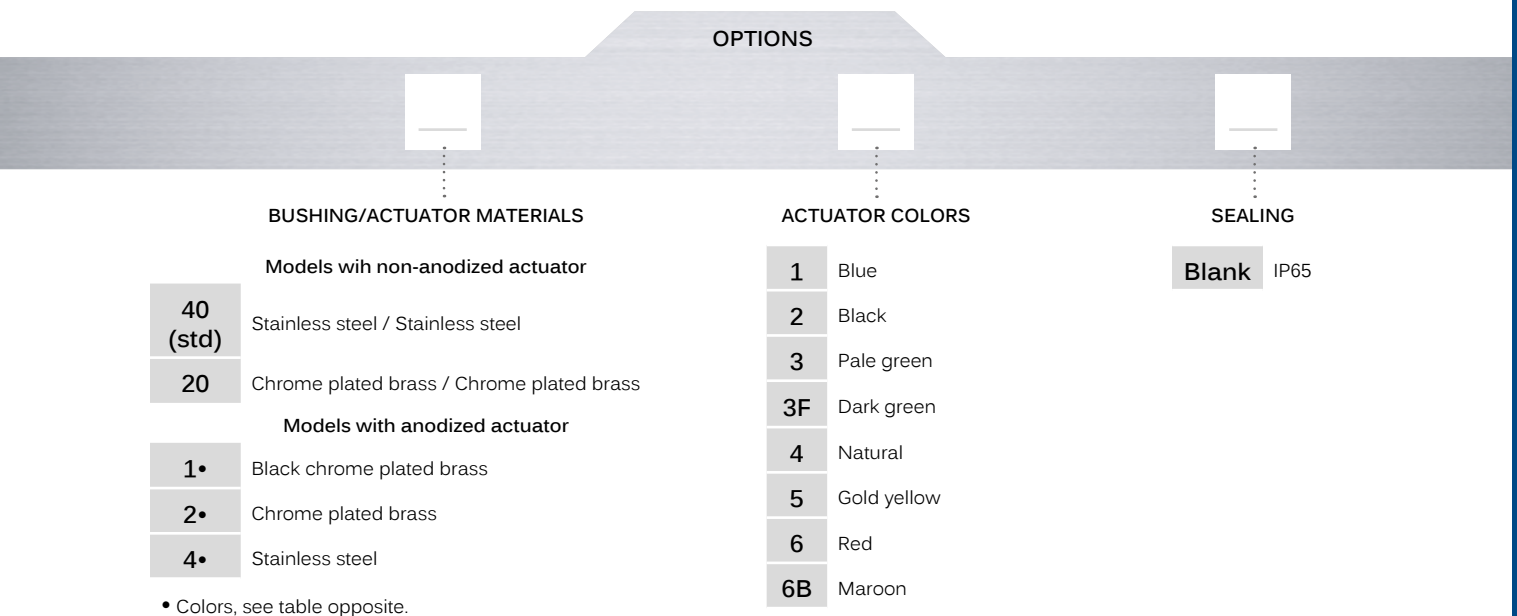
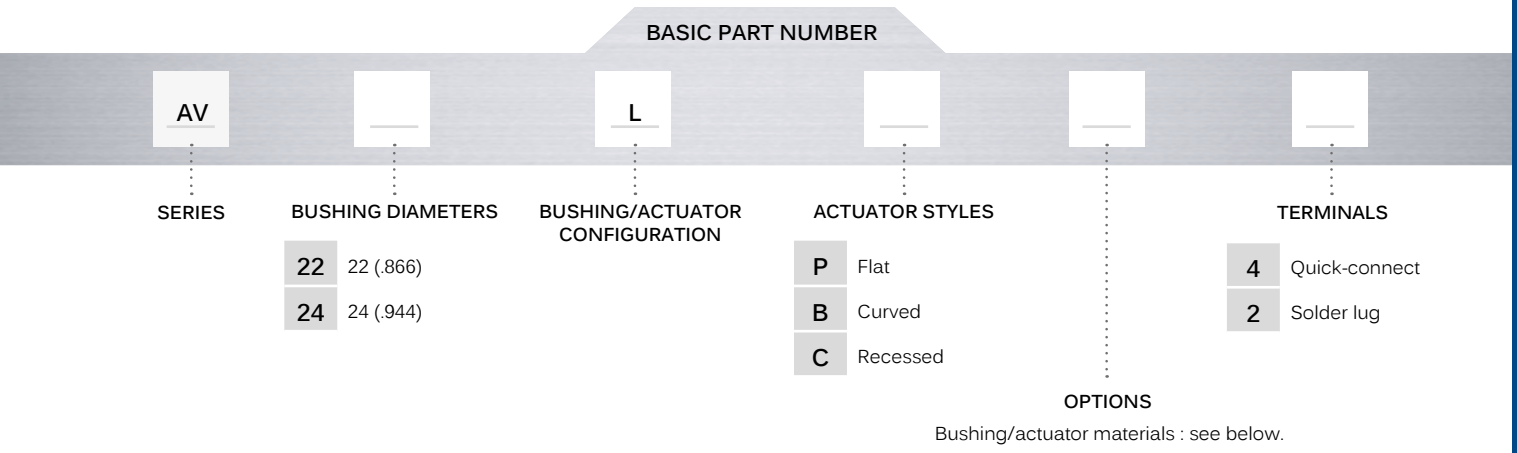
- Panel cut-out : Ø 22.2 mm (.874) or Ø 24.2 mm (.952)
- Min. pitch for matrix mounting :
30 mm x 30 mm (1.181x1.181)
or 33 mm x 33 mm (1.299x1.299)

AV series

Security pushbutton switches •
 Ø 22 or 24 mm • with large actuator • momentary NC+NO



BUILD YOUR PART NUMBER



ABOUT THIS SERIES

On the following pages, you will find successively basic part numbers of switches and options in the same order as in above chart.

Notice: please note that not all combinations of above numbers are available. Refer to the following pages for further information.

Mounting accessories: standard hardware supplied : 1 hex nut and 1 O-ring. Standard and special hardware is presented in the "Hardware" section of website.

AV series

Security pushbutton switches •
 Ø 22 or 24 mm • with large actuator • momentary NC+NO

BUSHING Ø 22 (.866) - FLAT ACTUATOR



Quick-connect terminals

AV22LP••4



Solder lug terminals

AV22LP••2



BUSHING Ø 22 (.866) - CURVED OR RECESSED ACTUATOR



CURVED ACTUATOR
 Quick-connect terminals

AV22LB••4



Solder lug terminals

AV22LB••2



RECESSED ACTUATOR
 Quick-connect terminals

AV22LC••4



Solder lug terminals

AV22LC••2



BUSHING Ø 24 (.944) - FLAT ACTUATOR LOW PROFILE



Quick-connect terminals

AV24LP••4



Solder lug terminals

AV24LP••2



BUSHING Ø 24 (.944) - CURVED OR RECESSED ACTUATOR - LOW PROFILE



CURVED ACTUATOR
 Quick-connect terminals

AV24LB••4



Solder lug terminals

AV24LB••2



RECESSED ACTUATOR
 Quick-connect terminals

AV24LC••4



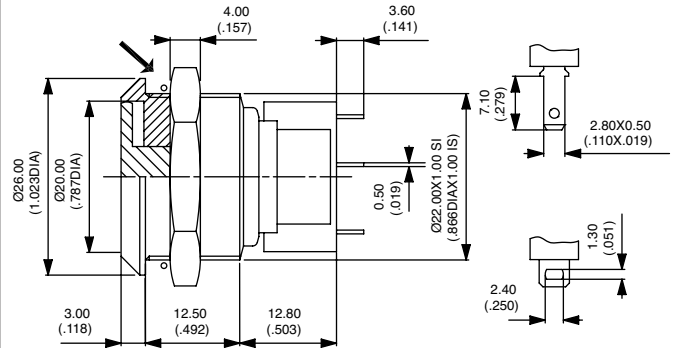
Solder lug terminals

AV24LC••2



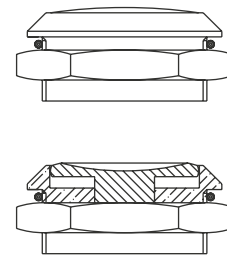
→ O-RING

Hex nut 25 (.984) across flats



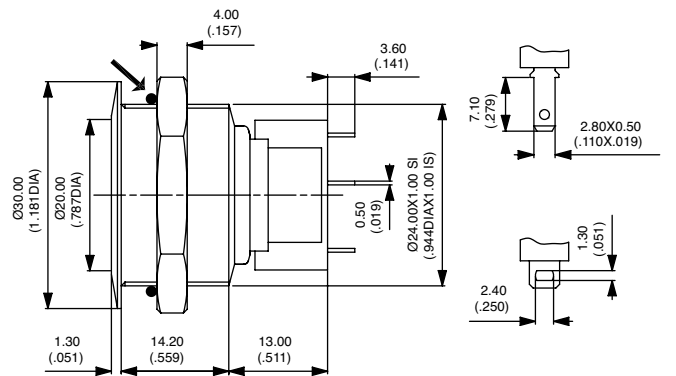
→ O-RING

Hex nut 25 (.984) across flats



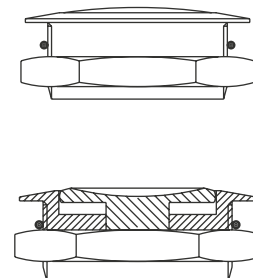
→ O-RING

Hex nut 27 (1.062) across flats



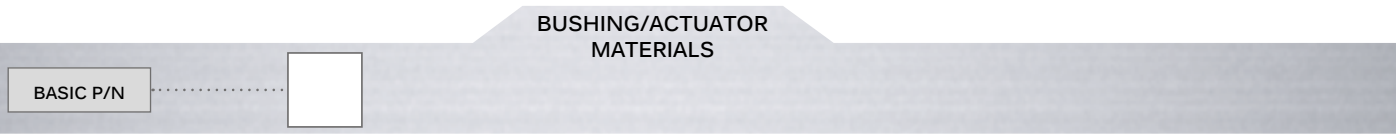
→ O-RING

Hex nut 27 (1.062) across flats



AV series

Security pushbutton switches •
Ø 22 or 24 mm • with large actuator • momentary NC+NO



MODELS WITH NON-ANODIZED ACTUATOR		
CODE	BUSHING	ACTUATOR
40 (std)	Stainless steel	Stainless steel
20	Chrome plated brass	Chrome plated brass

MODELS WITH ANODIZED ACTUATOR		
CODE	BUSHING	ACTUATOR
1•	Black chrome plated brass	Replace • with one of the following codes : 1 : blue - 2 : black - 3 : pale green - 3F : dark green - 4 : natural - 5 : gold yellow - 6 : red - 6B : marron
2•	Chrome plated brass	
4•	Stainless steel	