



Chipsmall Limited consists of a professional team with an average of over 10 year of expertise in the distribution of electronic components. Based in Hongkong, we have already established firm and mutual-benefit business relationships with customers from,Europe,America and south Asia,supplying obsolete and hard-to-find components to meet their specific needs.

With the principle of “Quality Parts,Customers Priority,Honest Operation,and Considerate Service”,our business mainly focus on the distribution of electronic components. Line cards we deal with include Microchip,ALPS,ROHM,Xilinx,Pulse,ON,Everlight and Freescale. Main products comprise IC,Modules,Potentiometer,IC Socket,Relay,Connector.Our parts cover such applications as commercial,industrial, and automotives areas.

We are looking forward to setting up business relationship with you and hope to provide you with the best service and solution. Let us make a better world for our industry!



## Contact us

Tel: +86-755-8981 8866 Fax: +86-755-8427 6832

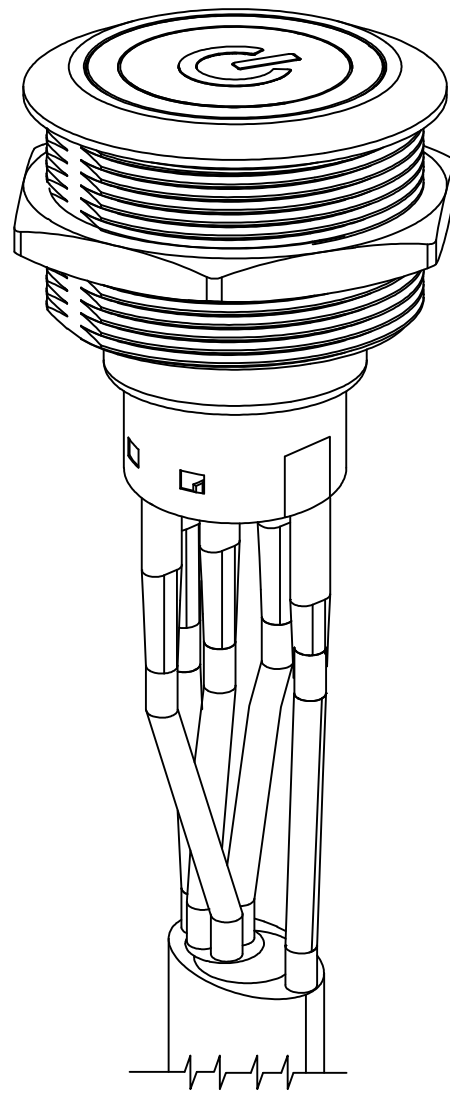
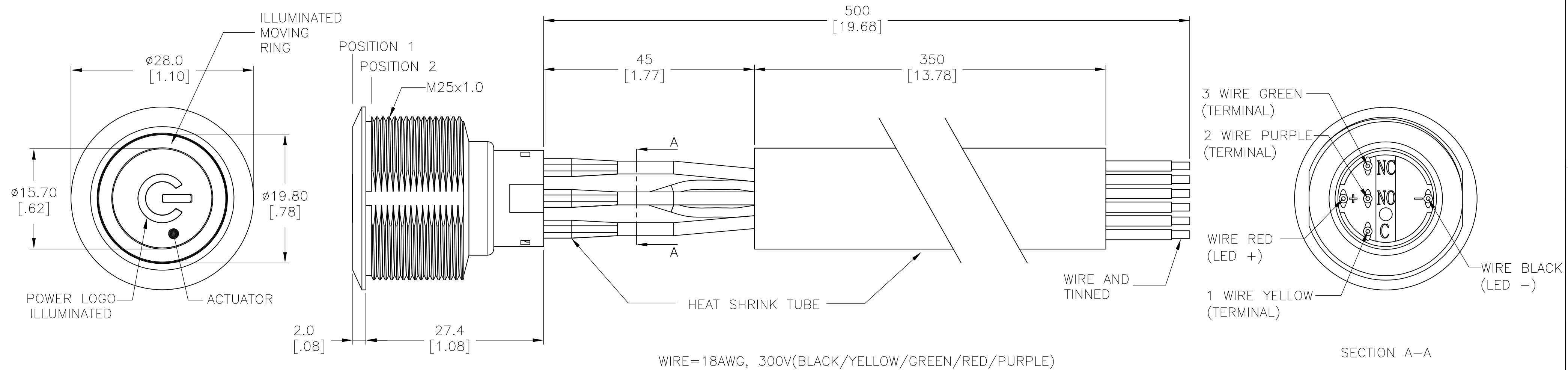
Email & Skype: [info@chipsmall.com](mailto:info@chipsmall.com) Web: [www.chipsmall.com](http://www.chipsmall.com)

Address: A1208, Overseas Decoration Building, #122 Zhenhua RD., Futian, Shenzhen, China

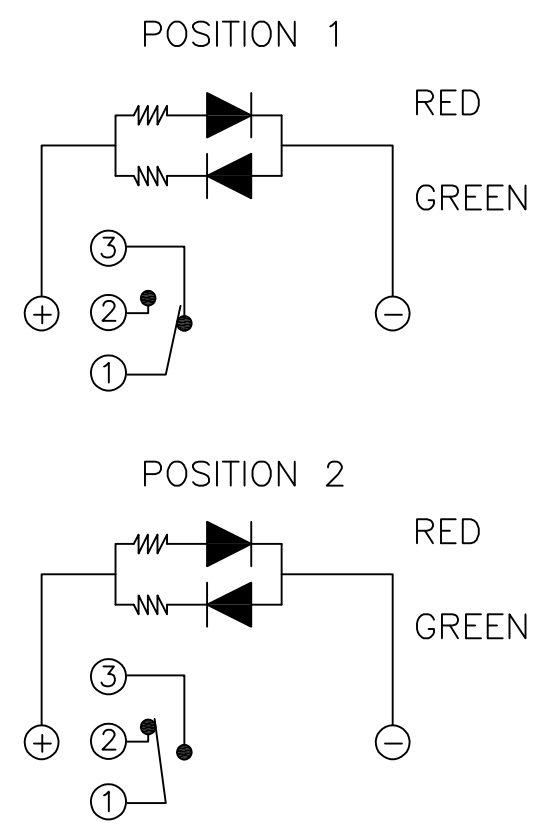
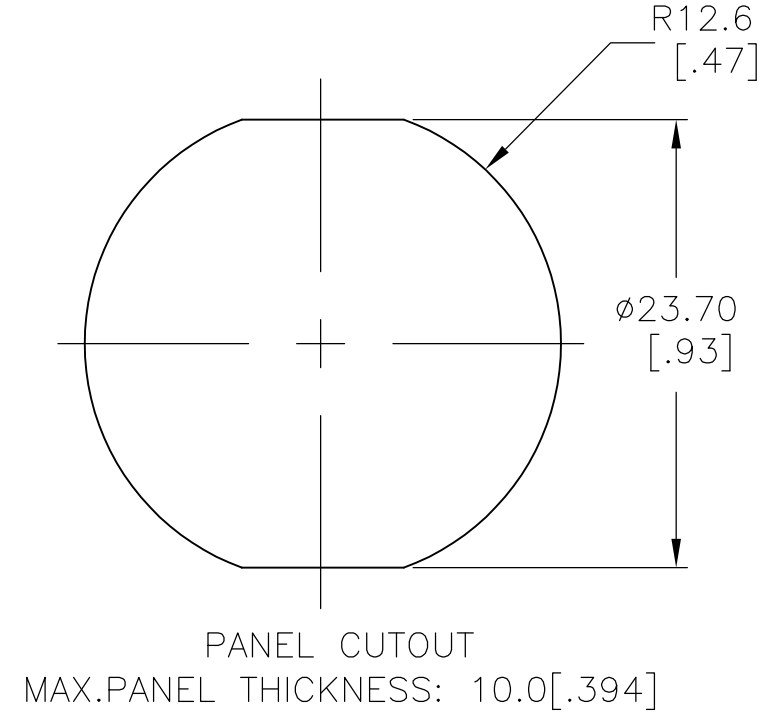
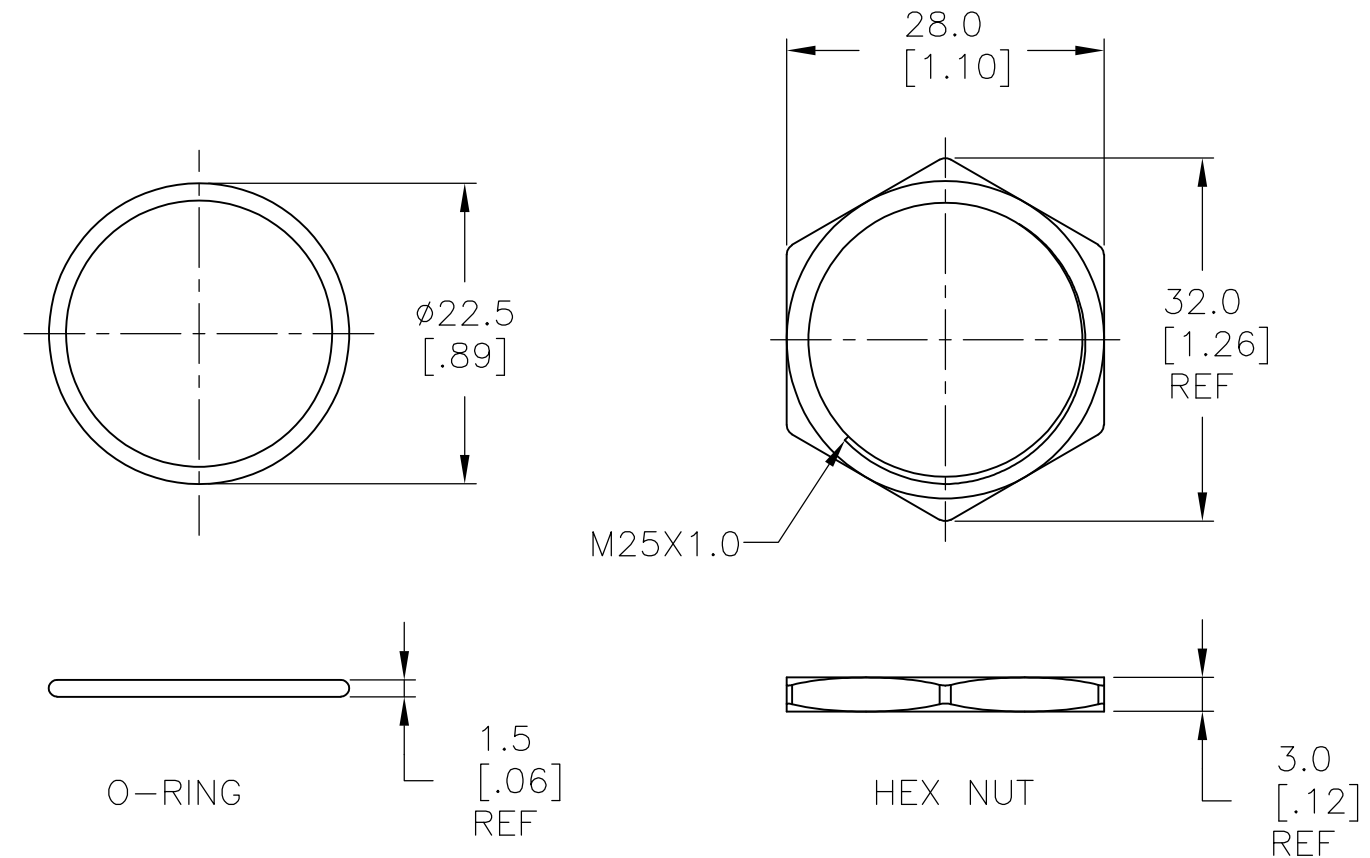


REVISIONS					
P	LTR	DESCRIPTION	DATE	DWN	APVD
	A	INITIAL RELEASE	10MAY2017	SK	AS

SINGLE POLE SWITCH WITH DUAL COLOR LED'S AND FLYING LEADS



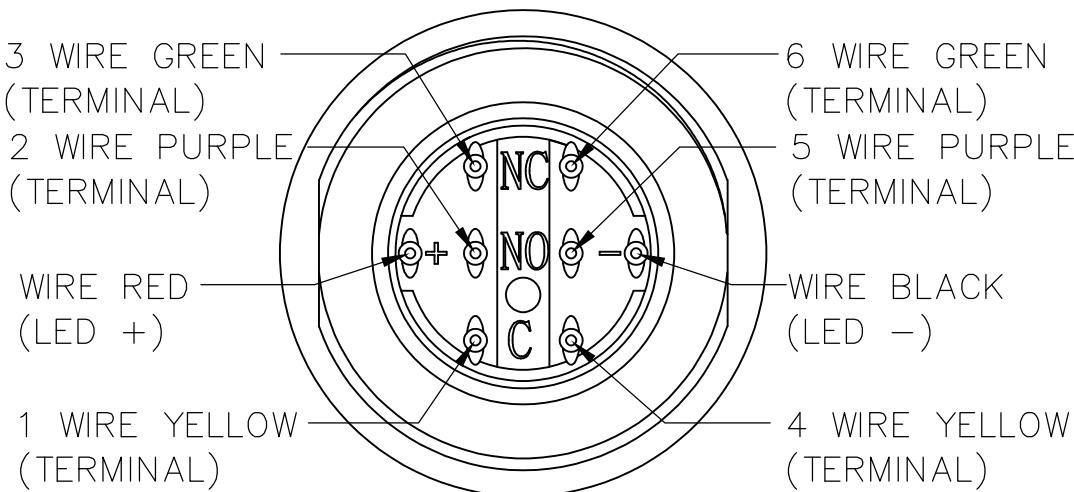
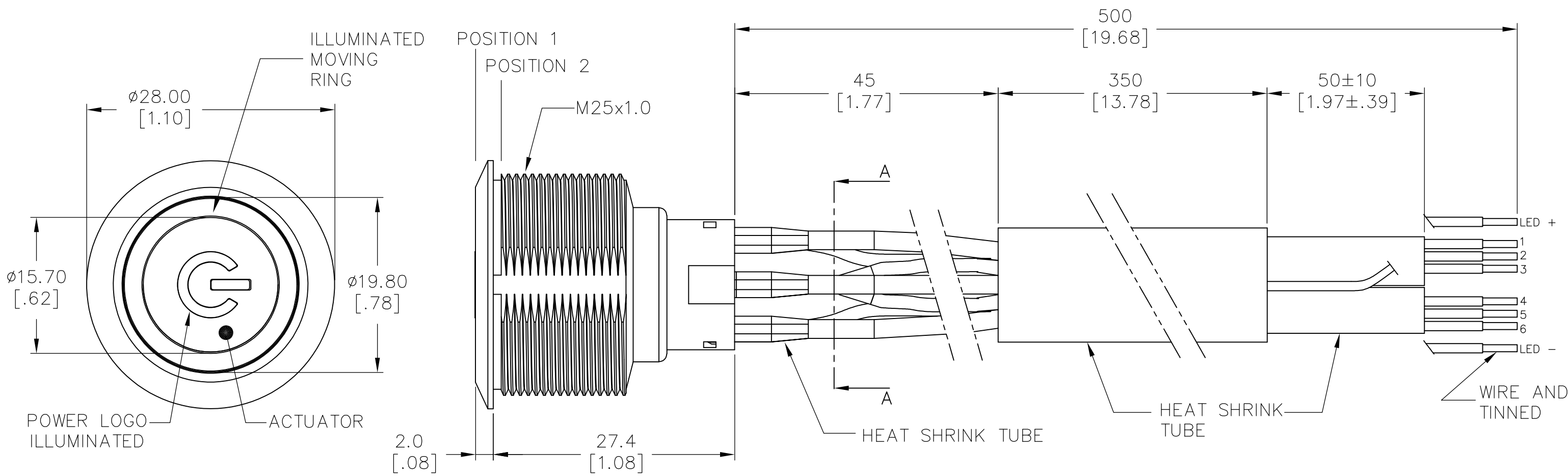
ASSEMBLED VIEW



THIS DRAWING IS A CONTROLLED DOCUMENT.		DWN 15MAR2017 SHIVAKUMAR S S	TE Connectivity		
DIMENSIONS: mm [INCHES]		CHK 15FEB2017 ALEXANDER SHARPE			
		APVD 15FEB2017 ALEXANDER SHARPE	NAME ANTI-VANDAL SWITCH 25mm, MOVING RING LED PLUS POWER LOGO AND FLYING LEADS		
		PRODUCT SPEC	SIZE CAGE CODE DRAWING NO RESTRICTED TO		
TOLERANCES UNLESS OTHERWISE SPECIFIED:		APPLICATION SPEC	A2 00779 C=2317659		
MATERIAL		WEIGHT 0	SCALE 1:1 SHEET 1 OF 3 REV A		
FINISH		CUSTOMER DRAWING			

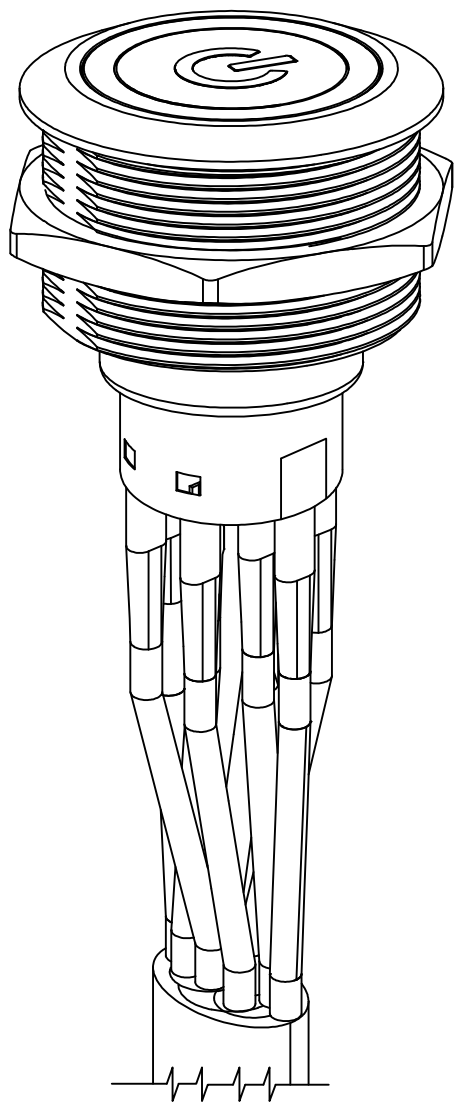
REVISIONS					
P	LTR	DESCRIPTION	DATE	DWN	APVD
-	-	SEE SHEET 1	-	-	-

DOUBLE POLE SWITCH WITH DUAL COLOR LED'S AND FLYING LEADS

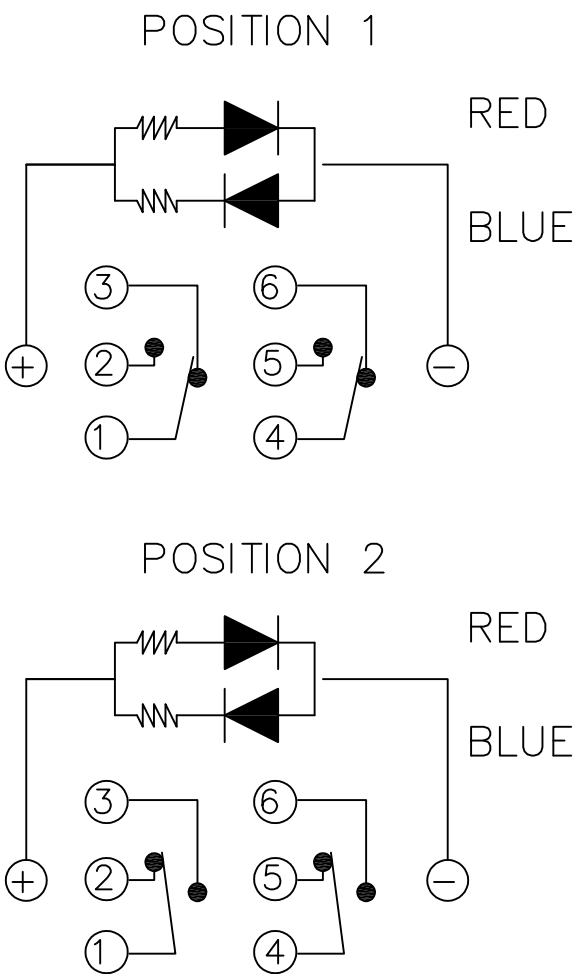
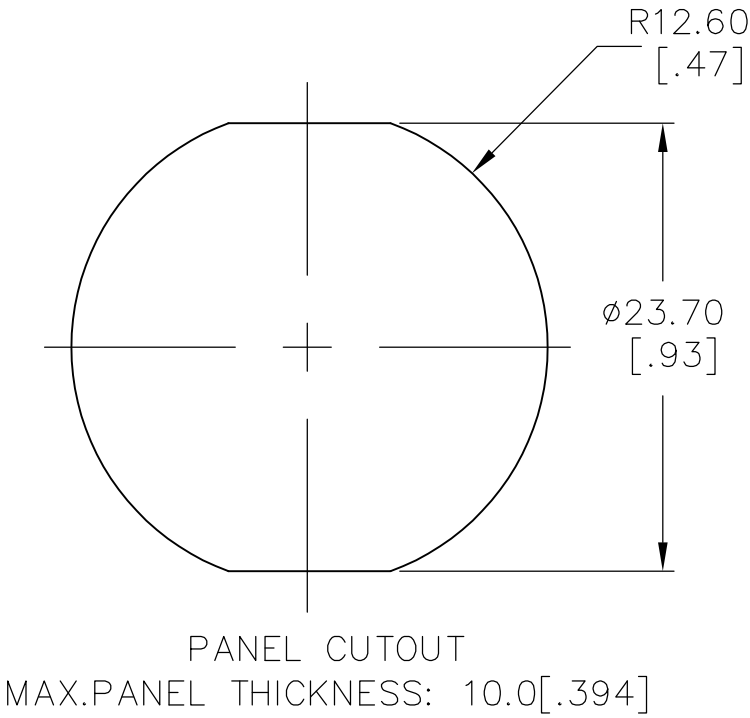
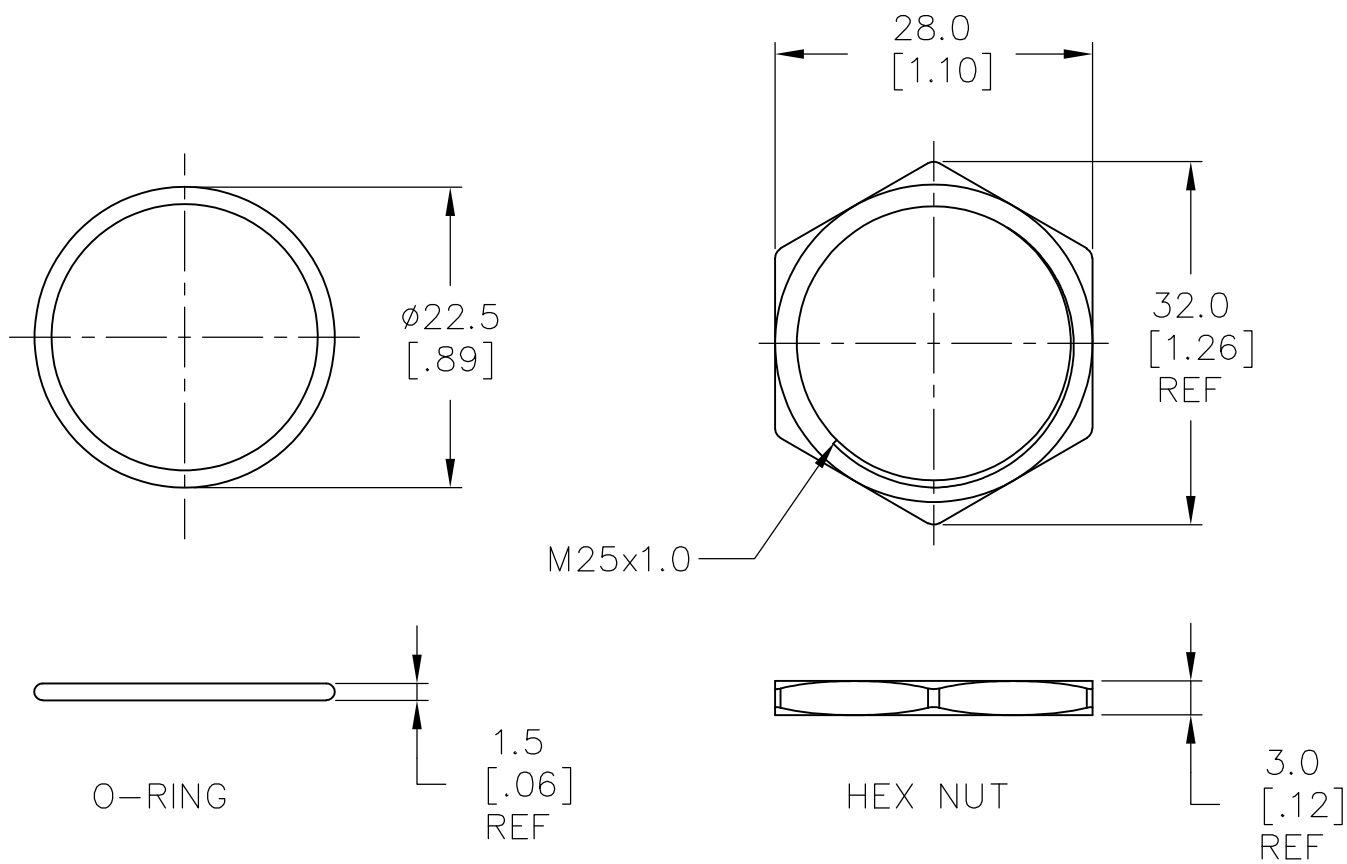


SECTION A-A

WIRE=18AWG, 300V(BLACK/YELLOW/GREEN/RED/PURPLE)



ASSEMBLED VIEW



THIS DRAWING IS A CONTROLLED DOCUMENT.		DWN 15MAR2017 SHIVAKUMAR S S	TE Connectivity		
DIMENSIONS: mm [INCHES]		CHK 15FEB2017 ALEXANDER SHARPE			
		APVD 15FEB2017 ALEXANDER SHARPE	NAME		
		PRODUCT SPEC	ANTI-VANDAL SWITCH 25mm, MOVING RING LED PLUS POWER LOGO AND FLYING LEADS		
TOLERANCES UNLESS OTHERWISE SPECIFIED:		APPLICATION SPEC	-		
0 PLC ± -		WEIGHT 0	SIZE A2	CAGE CODE 00779	RESTRICTED TO -
1 PLC ± 0.4[.016]		CUSTOMER DRAWING	DRAWING NO C=2317659		REV A
2 PLC ± 0.25[.010]			SCALE 1:1	SHEET 2 of 3	
3 PLC ± -					
4 PLC ± -					
ANGLES ± 2°					
FINISH -					



THIS DRAWING IS UNPUBLISHED.	RELEASED FOR PUBLICATION
© COPYRIGHT - TE Connectivity	ALL RIGHTS RESERVED.

REVISIONS					
P	LTR	DESCRIPTION	DATE	DWN	APVD
	—	SEE SHEET 1	—	—	—

SPECIFICATION:



CONTACT RATING: SILVER; 3A @ 250VAC RESISTIVE  
GOLD; 0.4A @ 20VDC OR PEAK AC  
INSULATION RESISTANCE: 1,000MΩ MIN AT 500VDC  
DIELECTRIC STRENGTH: 2,000V RMS @ SEA LEVEL  
CONTACT RESISTANCE: 50mΩ MAX @ 1A 12VDC (INITIAL VALUE), SOLDER TERMINALS  
100mΩ MAX @ 1A 12VDC (INITIAL VALUES), FLYING LEADS.  
ELECTRICAL LIFE CYCLES: 50,000 MAKE AND BREAK CYCLES AT FULL LOAD.  
ACTUATION FORCE: SP: 2.5±1 NEWTON. DP: 3.5±1 NEWTON  
ACTUATION TRAVEL: 3.2MM  
SEALED PER IP67, IK08 (STAINLESS)  
OPERATING TEMPERATURE: -20°C TO +55°C  
MECHANICAL LIFECYCLES: MOMENTARY; 1,000,000 CYCLES  
LOCKING; 500,000 CYCLES  
HARDWARE TORQUE: 5-14 N-m.

## MATERIALS

BUSHING: STAINLESS STEEL,  
BASE: PBT (UL 94-V0), PC (UL 94-V2),  
ACTUATOR: STAINLESS STEEL, PC  
SEALING: O-RING (SILICONE),  
TERMINAL/CONTACT: COPPER BASE, SILVER/GOLD PLATED,  
HEX NUT: BRASS BASE, NICKEL PLATED,  
WIRE: UL3385.

1. ALL MATERIAL AND FINISHES SHALL COMPLY WITH EU DIRECTIVE 2002/95/EC OF 27JAN2003(ROHS).

SILVER	MOVING RING PLUS POWER LOGO	FLYING LEADS TERMINALS	DOUBLE POLE – MOMENTARY	RED & BLUE	24V	AV2520MB24T5Q04	1–2317659–2
				RED & BLUE	12V	AV2520MB12T5Q04	1–2317659–1
				RED & GREEN	24V	AV2520MA24T5Q04	1–2317659–0
				RED & GREEN	12V	AV2520MA12T5Q04	2317659–9
			SINGLE POLE – LOCKING	RED & BLUE	24V	AV2511MB24T5Q04	2317659–8
				RED & BLUE	12V	AV2511MB12T5Q04	2317659–7
				RED & GREEN	24V	AV2511MA24T5Q04	2317659–6
				RED & GREEN	12V	AV2511MA12T5Q04	2317659–5
			SINGLE POLE – MOMENTARY	RED & BLUE	24V	AV2510MB24T5Q04	2317659–4
				RED & BLUE	12V	AV2510MB12T5Q04	2317659–3
				RED & GREEN	24V	AV2510MA24T5Q04	2317659–2
				RED & GREEN	12V	AV2510MA12T5Q04	2317659–1
CONTACT FINISH	LIGHT TYPE	TERMINAL OPTION	POLE/THROW	LED COLOR	LED VOLTAGE	TE DESCRIPTIVE PART NUMBER	TE PART NUMBER

THIS DRAWING IS A CONTROLLED DOCUMENT.		DWN 15MAR2017 SHIVAKUMAR S S CHK 15FEB2017 ALEXANDER SHARPE APVD 15FEB2017 ALEXANDER SHARPE		 TE Connectivity	
DIMENSIONS: mm [INCHES]		TOLERANCES, UNLESS OTHERWISE SPECIFIED:		NAME	
		0 PLC ± - 1 PLC ± 0.4[.016] 2 PLC ± 0.25[.010] 3 PLC ± - 4 PLC ± - ANGLES ± 2°		ANTI-VANDAL SWITCH 25mm, MOVING RING LED PLUS POWER LOGO AND FLYING LEADS	
		PRODUCT SPEC —		—	
		APPLICATION SPEC —		—	
		MATERIAL —		FINISH —	
		WEIGHT 0		SIZE A2	CAGE CODE 00779
CUSTOMER DRAWING				DRAWING NO C-2317659	
				SCALE 1:1	SHEET 3 of 3
				REV A	

2317659

A