



Chipsmall Limited consists of a professional team with an average of over 10 year of expertise in the distribution of electronic components. Based in Hongkong, we have already established firm and mutual-benefit business relationships with customers from,Europe,America and south Asia,supplying obsolete and hard-to-find components to meet their specific needs.

With the principle of "Quality Parts,Customers Priority,Honest Operation,and Considerate Service",our business mainly focus on the distribution of electronic components. Line cards we deal with include Microchip,ALPS,ROHM,Xilinx,Pulse,ON,Everlight and Freescale. Main products comprise IC,Modules,Potentiometer,IC Socket,Relay,Connector.Our parts cover such applications as commercial,industrial, and automotives areas.

We are looking forward to setting up business relationship with you and hope to provide you with the best service and solution. Let us make a better world for our industry!



## Contact us

Tel: +86-755-8981 8866 Fax: +86-755-8427 6832

Email & Skype: info@chipsmall.com Web: www.chipsmall.com

Address: A1208, Overseas Decoration Building, #122 Zhenhua RD., Futian, Shenzhen, China



## AWSP40-24

### Description:

The AWSP40-24 is a single output power supply. This power supply is designed for a wide variety applications where high reliability is desired, including applications for the industrial and telecommunications markets. Excellent performance specifications are provided, together with compliance to European EMC (EN55022, Class B and EN61000-3-2), and Low Voltage directive (TUV EN60950).

### Specifications (@25C)

#### Input Characteristics:

<b>Input Voltage:</b>	85-264Vac
<b>Input Frequency Range:</b>	47-63Hz
<b>Max Input Current:</b>	1.0A @ Vin (rated)
<b>Max Inrush Current:</b>	20A@110Vac, 40A@220Vac at cold start
<b>Leakage Current:</b>	<3.5mA/240Vac

#### Output Characteristics:

<b>Output Voltage:</b>	24Vdc
<b>Output Current:</b>	1.7A
<b>Output Power:</b>	40W
<b>Adjustable Output Range:</b>	±10%
<b>Ripple &amp; Noise:</b>	100mV
<b>Load Regulation:</b>	±0.5%
<b>Line Regulation:</b>	±0.5%
<b>Efficiency:</b>	80%
<b>Temperature Drift:</b>	<0.03%/°C (10-50°C)
<b>Start-up Time:</b>	300ms max @ 230Vac
<b>Hold-up Time:</b>	30ms min, 100% Load@230Vac
<b>Rise-up Time:</b>	300ms max, 100% Load@230Vac
<b>Over Current Protection:</b>	At Load>120% 115/230Vac, Auto recovery
<b>Over Voltage Protection:</b>	Zener clamping at Vo>110%, Non auto recovery
<b>Short Circuit Protection:</b>	Short circuit protection available. Avoid short circuit >30 sec.

#### General Specifications:

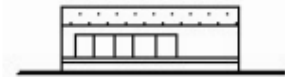
<b>Switching Frequency:</b>	50kHz
<b>Dimension (LxWxH):</b>	129x98x38mm
<b>Weight:</b>	360g net, 400g gross
<b>Cooling:</b>	Natural Convection
<b>Isolation Resistance:</b>	I/P—O/P, I/P—FG, O/P—FG: 500VDC/100Mohms
<b>Dielectric Strength:</b>	I/P—O/P: 3KVac; I/P—FG: 2.5KVac; O/P—FG: 0.5KVac 1 min
<b>Warranty:</b>	2 years

#### Environmental Specifications:

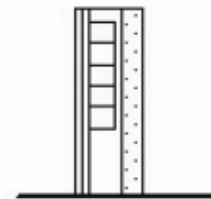
<b>Operating Temperature:</b>	-10° to 60°C
<b>Operating Humidity:</b>	20 to 90% RH, non-condensing
<b>Storage Temperature:</b>	-25 to 75°C
<b>Storage Humidity:</b>	10 to 95% RH, non-condensing
<b>Vibration:</b>	10-55Hz, 2G 1min/cycle, period of 60min, each X, Y & Z axis

#### EMC & Safety Specifications:

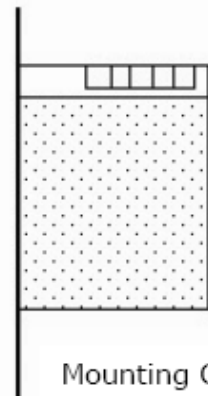
<b>EMC Emissions:</b>	Conforms to EN55022,VCCI,CISPR22 Class B (Conducted & Radiated); IEC-61000-4-2, 61000-4-4, 61000-4-5, 61000-4-11
<b>ESD Susceptibility:</b>	EN61000-4-2 (15kV/8kV)
<b>Radiated Susceptibility:</b>	EN61000-4-3 (3Vm <sup>-1</sup> )
<b>Fast Burst:</b>	EN61000-4-4 (2kV)
<b>Surge:</b>	EN61000-4-5 (1kV/2kV)
<b>Safety Approval:</b>	UL 60950 (UL File No: E204980) TUV EN60950 (TUV No: 50058679)



Mounting A



Mounting B

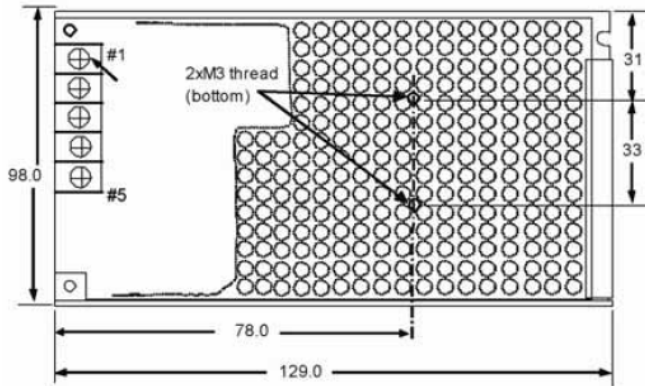


Mounting C



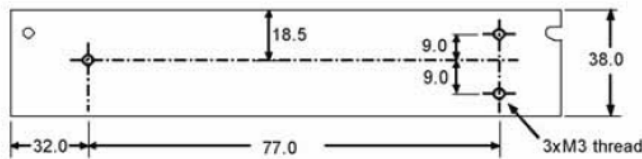


### Outline Dimensions (mm):



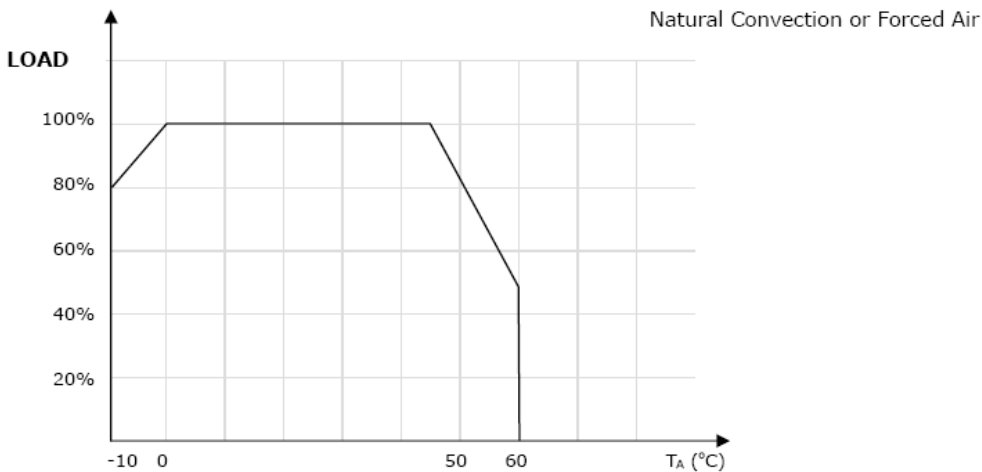
#### TERMINAL SCREW ASSIGNMENT

- # 1,2 : AC INPUT
- # 3 : FG (FRAME GROUND)
- # 4 : DC OUTPUT -V
- # 5 : DC OUTPUT +V



Unit : mm  
Tolerance : +/-1.0mm

### Derating Curve:



### Connector Types:

**Input:** Screw Terminals  
**Output:** Screw Terminals

**RoHS Compliance:** As of manufacturing date February 2005, all standard products meet the requirements of 2011/65/EU, known as the RoHS initiative.

\* Upon printing, this document is considered "uncontrolled". Please contact Triad Magnetics' website for the most current version.