



Chipsmall Limited consists of a professional team with an average of over 10 year of expertise in the distribution of electronic components. Based in Hongkong, we have already established firm and mutual-benefit business relationships with customers from,Europe,America and south Asia,supplying obsolete and hard-to-find components to meet their specific needs.

With the principle of “Quality Parts,Customers Priority,Honest Operation,and Considerate Service”,our business mainly focus on the distribution of electronic components. Line cards we deal with include Microchip,ALPS,ROHM,Xilinx,Pulse,ON,Everlight and Freescale. Main products comprise IC,Modules,Potentiometer,IC Socket,Relay,Connector.Our parts cover such applications as commercial,industrial, and automotives areas.

We are looking forward to setting up business relationship with you and hope to provide you with the best service and solution. Let us make a better world for our industry!



Contact us

Tel: +86-755-8981 8866 Fax: +86-755-8427 6832

Email & Skype: info@chipsmall.com Web: www.chipsmall.com

Address: A1208, Overseas Decoration Building, #122 Zhenhua RD., Futian, Shenzhen, China



PART NUMBER BREAKDOWN

AX3FB1-AU BULK

SERIES PREFIX

AX3F = 3 SOCKET FEMALE

AX4F = 4 SOCKET FEMALE

AX5F = 5 SOCKET FEMALE

SHELL FINISH

BLANK = NICKEL PLATED

B = BLACK

SLEEVE COLOR

BLANK = BLACK

1 = BROWN

2 = RED

3 = ORANGE

4 = YELLOW

5 = GREEN

6 = BLUE

7 = VIOLET

8 = GREY

9 = WHITE

C = CLEAR

CONTACT PLATING

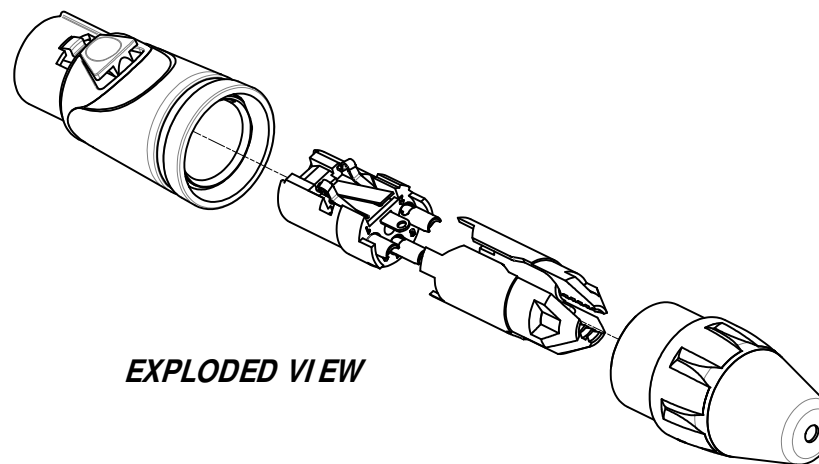
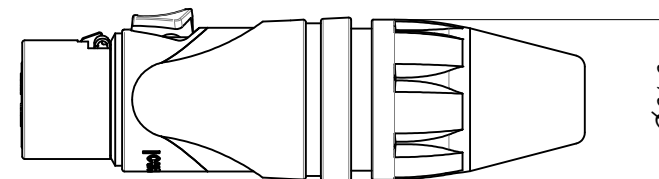
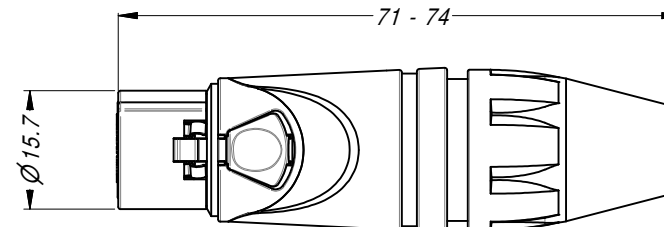
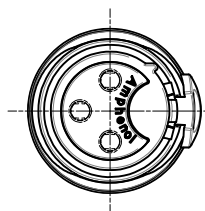
BLANK = STANDARD

AU = GOLD PLATE

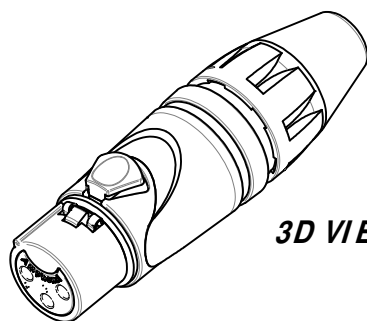
PACKAGING

BLANK = INDIVIDUAL BAGS


BULK = BULK PACKED



EXPLODED VIEW



3D VIEW

UNLESS OTHERWISE SPECIFIED TOLERANCE TO BE		THIS DOCUMENT IS THE PROPERTY OF AMPHENOL AUSTRALIA PTY. LTD. . NO PART THEREOF MAY BE REPRODUCED AND USED WITHOUT THE PRIOR WRITTEN CONSENT OF THE OWNER				<div>Amphenol</div> <div>Amphenol Australia Pty.Ltd, 2 Fiveways Blvd, Keysborough, VIC 3173</div>	
LINEAR	ANGULAR	MATERIAL: SEE COMPONENTS					
X ± 0.5 X.X ± 0.1 X.XX ± 0.05	X' ± 1 X.X' ± 30° X.XX' ± 15°	DRN: T.N		DATE: 25/06/08		TITLE: XLR FEMALE PLUG AX SERIES CUSTOMER DRAWING	
BREAK ALL SHARP EDGES AND REMOVE ALL BURRS		CKD: P.M		DATE: 22/12/08			
DO NOT SCALE		APP'D: P.M		DATE: 22/12/08		PART No: SEE P/ No BREAKDOWN	
DIMENSIONS IN MILLIMETRES		FINISH:		DRAWING NO.		SHEET	
		THIRD ANGLE PROJECTION		SCALE: 1:1		55010535-000-2	
				SIZE: A4		2/2	
				CAD FILE: 5501535000210			