



Chipsmall Limited consists of a professional team with an average of over 10 year of expertise in the distribution of electronic components. Based in Hongkong, we have already established firm and mutual-benefit business relationships with customers from,Europe,America and south Asia,supplying obsolete and hard-to-find components to meet their specific needs.

With the principle of “Quality Parts,Customers Priority,Honest Operation,and Considerate Service”,our business mainly focus on the distribution of electronic components. Line cards we deal with include Microchip,ALPS,ROHM,Xilinx,Pulse,ON,Everlight and Freescale. Main products comprise IC,Modules,Potentiometer,IC Socket,Relay,Connector.Our parts cover such applications as commercial,industrial, and automotives areas.

We are looking forward to setting up business relationship with you and hope to provide you with the best service and solution. Let us make a better world for our industry!



Contact us

Tel: +86-755-8981 8866 Fax: +86-755-8427 6832

Email & Skype: info@chipsmall.com Web: www.chipsmall.com

Address: A1208, Overseas Decoration Building, #122 Zhenhua RD., Futian, Shenzhen, China



The "A" Series of non-inductive, ceramic composite resistors are designed for a variety of applications where high energy handling capabilities are crucial. These resistors are ideal for any application which is subject to surges, high peak power or impulse energy.

Their unique design allows uniform distribution of energy throughout their structure which results in low thermal stress. The high-temperature, solvent-resistant epoxy coating carries a UL94V0 flammability rating which is suitable for almost any environment.

FEATURES

- High Surge Energy
- Non-Inductive
- Small Size

APPLICATIONS

- Motor Drives
- Power Supplies, UPS
- Power Conversion
- In-Rush Current Limiting

SPECIFICATIONS

Material

Resistance Element: Bulk Ceramic

Terminals: Solder coated radial leads (axial lead version available upon request)

Coating: UL94V0, solvent resistant epoxy

Electrical

Tolerance: ±10% Standard;

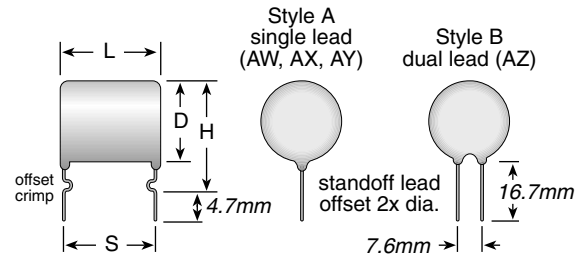
±5% Special Order

Derating: Derates linearly from 100% @ 50°C to 0% @ 150°C

Temperature Rise: 100°C @ 100% rated power, 50°C ambient

A Series

PulsEaters® Ceramic Composition Resistors Available in E12 Ohmic values



Lead Gauge:
AW = 20AWG
AX = 18AWG
AY = 18AWG
AZ = 18AWG

AZ style is provided with dual leads

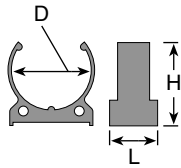
ORDERING INFORMATION

E = RoHS compliant Available Jan. 2006		
A	W	5 6 G K E
Size AW = 2.5W AX = 3.5W AY = 4.5W AZ = 5.5W	Ohm Value Example: 33G = 3.3 Ohms 330 = 33 Ohms 331 = 330 Ohms	Tolerance K = 10% Standard J = 5% Special order

Series	Resistance ¹ (Ohms)	P avg. ²	L max. (mm)	D max. (mm)	H max. (mm)	S norm. (mm)	Impulse Voltage ³ (Volts)	Energy ⁴ (Joule)
AW xxx	4.7 to 15K	2.5	20	13	22	17.5	1500	400
AX xxx	1.0 to 3.3K	3.5	15	21	31	12.5	1000	700
AY xxx	2.2 to 6.8K	4.5	25	21	31	22.5	2000	1400
AZ xxx	1.5 to 4.7K	5.5	30	26	36	27	2500	2800

¹E12 Standard Values ±10%; ²Free Air 40°C Ambient; ³In Air; ⁴Single Impulse

MOUNTING CLIP



Part No.	Dim. (mm)	for Series
5911E	20 23 13	AX and AY
5910E	25 26 15	AZ

This saddle clip conforms to the configuration of Ohmite's A Series resistor to provide secure mounting in the end application. Made of a durable thermoplastic polyester, the saddle clip is designed to secure the A Series in place while safely withstanding its operating temperatures. Use (2) saddle clips per resistor for extra stability.

STANDARD SPECIFICATIONS

Parameter	Max. ΔR	Test Method
Life Test	+5%	MIL-STD-202F, method 108A, except 50°C, 1000 hrs. @ rated power; 1.5 hrs. ON, 0.5 hrs. OFF
Single Pulse Energy	±1.5%	Single pulse, capacitor discharge at Rated Energy; 350VDC for AW and AX sizes; 650VDC for AY and AZ sizes.
Repetitive HV Pulsing	±2.0%	10 joules @ 5.0KV, 10,000 cycles
Short-time Overload	±1.5%	10x rated power. 5 seconds ON, 5 seconds OFF, 5 cycles
Short-term High Temp	±1.5%	250°C for 30 seconds
Long-term High Temp	±2.0%	1000 hours @ 150°C
Thermal Shock Cycle	±2.0%	MIL-STD-202F, method 107D, -55°C to +125°C, 5 cycles
Moisture Resistance	±1.0%	90% to 95% rh @ 40°C, 1000 hrs.

A SERIES STOCK VALUES

Ohmic value	Part No. Prefix ▶ Suffix ▼	Series	Ohmic value	Part No. Prefix ▶ Suffix ▼	Series	Ohmic value	Part No. Prefix ▶ Suffix ▼	Series	Ohmic value	Part No. Prefix ▶ Suffix ▼	Series
1.0 — 10GK		✓	5.6 — 56GK		✓	33 — 330K		✓	220 — 221K		✓
1.2 — 12GK			6.8 — 68GK		✓	39 — 390K		✓	270 — 271K		✓
1.5 — 15GK			8.2 — 82GK		✓	47 — 470K		✓	330 — 331K		✓
1.8 — 18GK			10 — 100K		✓	56 — 560K		✓	390 — 391K		✓
2.2 — 22GK		✓	12 — 120K		✓	68 — 680K		✓	470 — 471K		✓
2.7 — 27GK			15 — 150K		✓	82 — 820K		✓	560 — 561K		✓
3.3 — 33GK		✓	18 — 180K			100 — 101K		✓	680 — 681K		✓
3.9 — 39GK		✓	22 — 220K		✓	120 — 121K		✓	820 — 821K		✓
4.7 — 47GK		✓	27 — 270K		✓	150 — 151K		✓	1000 — 102K		✓
						180 — 181K					

✓ = Stock values Non-standard values subject to a minimum handling charge per item.