



Chipsmall Limited consists of a professional team with an average of over 10 year of expertise in the distribution of electronic components. Based in Hongkong, we have already established firm and mutual-benefit business relationships with customers from,Europe,America and south Asia,supplying obsolete and hard-to-find components to meet their specific needs.

With the principle of "Quality Parts,Customers Priority,Honest Operation,and Considerate Service",our business mainly focus on the distribution of electronic components. Line cards we deal with include Microchip,ALPS,ROHM,Xilinx,Pulse,ON,Everlight and Freescale. Main products comprise IC,Modules,Potentiometer,IC Socket,Relay,Connector.Our parts cover such applications as commercial,industrial, and automotives areas.

We are looking forward to setting up business relationship with you and hope to provide you with the best service and solution. Let us make a better world for our industry!



## Contact us

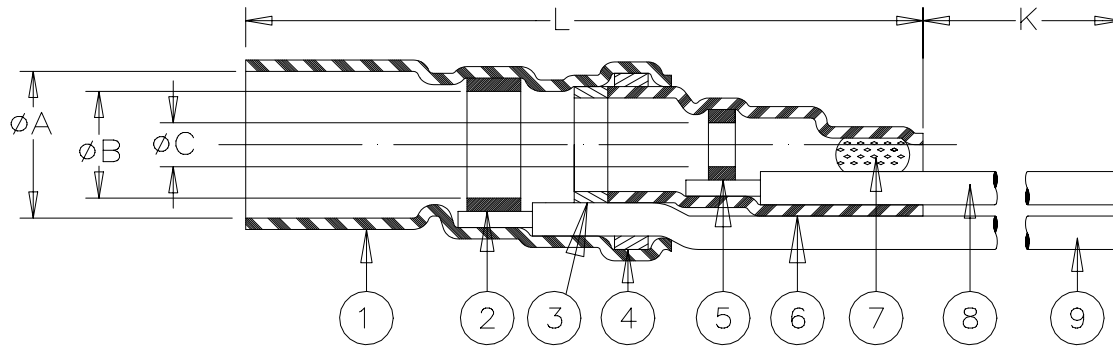
Tel: +86-755-8981 8866 Fax: +86-755-8427 6832

Email & Skype: info@chipsmall.com Web: www.chipsmall.com

Address: A1208, Overseas Decoration Building, #122 Zhenhua RD., Futian, Shenzhen, China



## SPECIFICATION CONTROL DRAWING



PART NAME	PRODUCT REVISION	PRODUCT DIMENSIONS					"GA" = WIRE GAUGE (AWG)
		A min	B min	C min	L max	K min	
B-043-24-N	D						24
B-043-26-N	D	3.4	2.3	0.8	28	150	26
B-043-28-N	D	(0.135)	(0.090)	(0.030)	(1.100)	(5.900)	28
B-043-30-N	D						30

CABLE DIMENSIONS				
D	E	F min	(G±0.02)	(M±0.02)
1.7 (0.065) TO 3.4 (0.135)	1.3 (0.050) TO 2.3 (0.090)	0.3 (0.012)	16 (0.630)	6 (0.235)

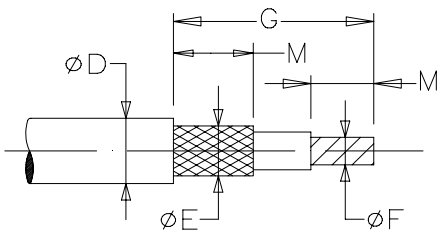
### MATERIAL

1. & 6. INSULATION SLEEVE: Heat-shrinkable, radiation cross-linked modified polyvinylidene fluoride. Transparent blue.
2. & 5. SOLDER PREFORMS WITH FLUX:  
SOLDER: TYPE Sn63 per ANSI J-STD-006.  
FLUX: TYPE ROL1 per ANSI J-STD-004.
- 3., 4. & 7. MELTABLE RINGS: Thermally stabilized thermoplastic.
8. CONDUCTOR LEAD: AWG GA (see table). MIL-W-81822/13-GA-9. ETFE insulated silver plated solid conductor.  
Color: white.
9. GROUND LEAD: MIL-W-81822/13-GA-G. ETFE insulated, silverplated, solid conductor. Color: blue. GA= Gauge per table.

### APPLICATION

- A. The parts covered by this SCD are for use in terminating the primary conductor and the braided shield of a coaxial cable having tin or silverplated conductor and shield, rated for at least 125° C and meeting the dimensional requirements listed.
- B. Parts will meet the requirements of Raychem specification RT-1404 when installed per Raychem RPIP-500-03.

For best results, prepare the cable as shown:



<b>tyco</b> Electronics		Tyco Electronics Corporation 305 Constitution Drive Menlo Park, CA 94025, USA		<b>Raychem</b> Products		<b>COAXIAL SOLDERSLEEVE* DEVICE WITH PRE-INSTALLED LEAD SOLID WIRES</b>	
UNLESS OTHERWISE SPECIFIED DIMENSIONS ARE IN MILLIMETERS. INCHES DIMENSIONS ARE IN BETWEEN BRACKETS.				DOCUMENT NO: <b>B-043-GA-N</b>			
TOLERANCES: 0.00 N/A 0.0 N/A 0 N/A		ANGLES: N/A ROUGHNESS IN MICRON		Tyco Electronics reserves the right to amend this drawing at any time. Users should evaluate the suitability of the product for their application.		DATE: Nov. 23, 1998	
DRAWN BY: <b>R. MAPALO</b>		REPLACES: <b>B021XYN</b>		DCR NUMBER: <b>D981934</b>		PROD. REV. <b>SEE TABLE</b>	
				SCALE: <b>NONE</b>		SIZE: <b>A</b>	
						SHEET: <b>1 of 1</b>	

If this document is printed it becomes uncontrolled. Check for the latest revision