



Chipsmall Limited consists of a professional team with an average of over 10 year of expertise in the distribution of electronic components. Based in Hongkong, we have already established firm and mutual-benefit business relationships with customers from,Europe,America and south Asia,supplying obsolete and hard-to-find components to meet their specific needs.

With the principle of “Quality Parts,Customers Priority,Honest Operation,and Considerate Service”,our business mainly focus on the distribution of electronic components. Line cards we deal with include Microchip,ALPS,ROHM,Xilinx,Pulse,ON,Everlight and Freescale. Main products comprise IC,Modules,Potentiometer,IC Socket,Relay,Connector.Our parts cover such applications as commercial,industrial, and automotives areas.

We are looking forward to setting up business relationship with you and hope to provide you with the best service and solution. Let us make a better world for our industry!



Contact us

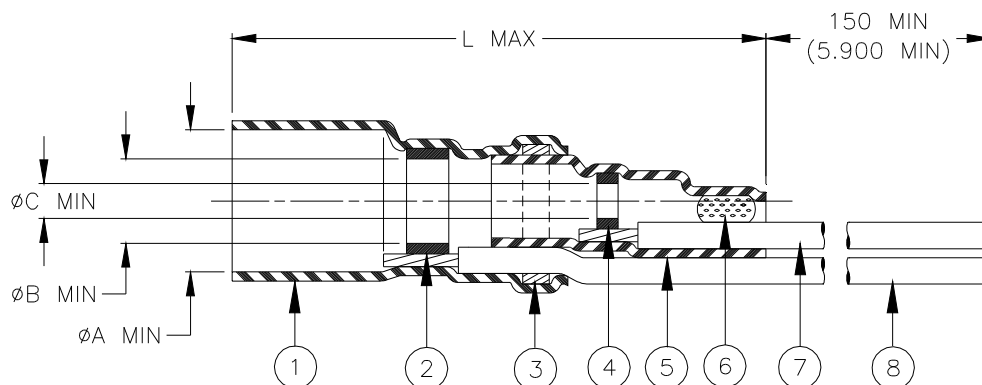
Tel: +86-755-8981 8866 Fax: +86-755-8427 6832

Email & Skype: info@chipsmall.com Web: www.chipsmall.com

Address: A1208, Overseas Decoration Building, #122 Zhenhua RD., Futian, Shenzhen, China



SPECIFICATION CONTROL DRAWING



Product Name	Component Dimensions				"GA" Wire Gauge (AWG)	Cable Dimensions				
	L max	øA min	øB min	øC min		øD	øE	øF min	G±0.5 (G±0.02)	M±0.5 (M±0.02)
B-044-20-N	28.0 (1.100)	3.40 (0.135)	2.30 (0.090)	0.8 (0.030)	20	1.70 (0.065) to 3.40 (0.135)	1.30 (0.050) To 2.30 (0.090)	0.30 (0.012)	16.0 (0.630)	6.0 (0.235)
B-044-22-N					22					
B-044-24-N	24									
B-044-26-N	26									

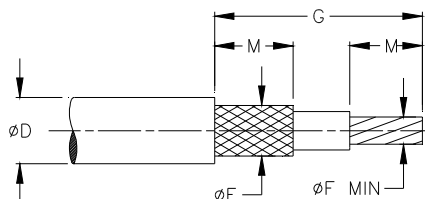
MATERIALS

- & 5. INSULATION SLEEVE: Heat-shrinkable, radiation cross-linked modified polyvinylidene fluoride. Transparent blue.
- & 4. SOLDER PREFORMS WITH FLUX:
SOLDER: TYPE Sn63 per ANSI J-STD-006.
FLUX: TYPE ROL1 per ANSI J-STD-004.
- & 6. MELTABLE RINGS: Thermally stabilized thermoplastic.
- CONDUCTOR LEAD: MIL-W-22759/32-GA-9, AWG "GA" (see table). ETFE insulated, stranded tin plated copper.
Color: white.
- GROUND LEAD: MIL-W-22759/32-GA-6, AWG "GA" (see table). ETFE insulated, stranded tin plated copper.
Color: blue.

APPLICATION

- The parts covered by this SCD are for use in terminating the primary conductor and the braided shield of a coaxial cable having tin or silver plated conductor and shield, rated for at least 125° C and meeting the dimensional requirements listed.
- Parts will meet the requirements of Raychem Specification RT-1404 when installed per Raychem RPIP-500-03.
- Temperature range: -55°C to +150°C.

For best results, prepare the cable as shown:



		TE Connectivity 300 Constitution Dr Menlo Park, CA 94025, U.S.A.	TITLE: COAXIAL SOLDER SLEEVE DEVICE WITH PRE-INSTALLED STRANDED WIRE			
Unless otherwise specified dimensions are in millimeters. [Inches dimensions are shown in brackets]		Raychem	DOCUMENT NO.: B-044-GA-N			
TOLERANCES: 0.00 N/A 0.0 N/A 0 N/A	ANGLES: N/A ROUGHNESS IN MICRON	TE Connectivity reserves the right to amend this drawing at any time. Users should evaluate the suitability of the product for their application.		REV: E1	DATE: 15-Apr-11	
DRAWN BY: P.TALLY	CAGE CODE: 06090	REPLACES: D001334	ECO NUMBER: ECO-11-005139	SCALE: NTS	SIZE: A	SHEET: 1 of 1

© 2007,2011 Tyco Electronics Corporation, a TE Connectivity Ltd. Company. All Rights Reserved.

If this document is printed it becomes uncontrolled. Check for the latest revision.