



Chipsmall Limited consists of a professional team with an average of over 10 year of expertise in the distribution of electronic components. Based in Hongkong, we have already established firm and mutual-benefit business relationships with customers from,Europe,America and south Asia,supplying obsolete and hard-to-find components to meet their specific needs.

With the principle of "Quality Parts,Customers Priority,Honest Operation,and Considerate Service",our business mainly focus on the distribution of electronic components. Line cards we deal with include Microchip,ALPS,ROHM,Xilinx,Pulse,ON,Everlight and Freescale. Main products comprise IC,Modules,Potentiometer,IC Socket,Relay,Connector.Our parts cover such applications as commercial,industrial, and automotives areas.

We are looking forward to setting up business relationship with you and hope to provide you with the best service and solution. Let us make a better world for our industry!



## Contact us

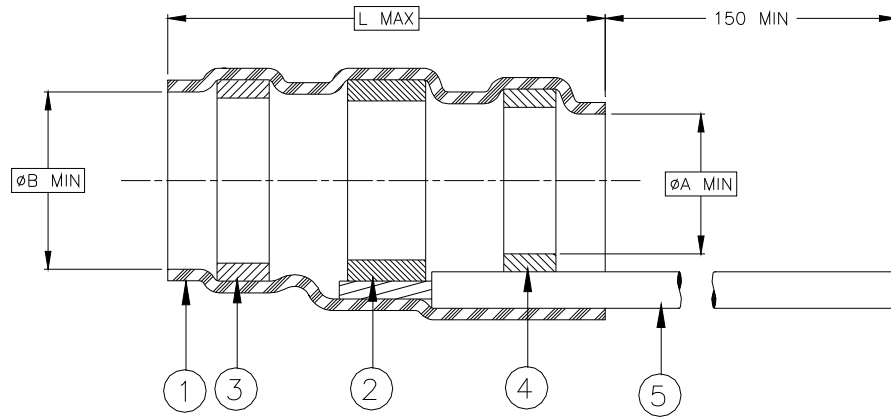
Tel: +86-755-8981 8866 Fax: +86-755-8427 6832

Email & Skype: info@chipsmall.com Web: www.chipsmall.com

Address: A1208, Overseas Decoration Building, #122 Zhenhua RD., Futian, Shenzhen, China



## CUSTOMER DRAWING



Part Name	Component Dimensions			Cable Dimensions				
	A min	B min	L max	D max	E min	F min	G max	J±0.5 (J±.020)
B-151-05	4.3 (.169)	4.8 (.189)	29.3 (1.154)	4.8 (.189)	2.0 (.079)	1.5 (.059)	4.3 (.169)	9.0 (.354)
B-151-07	6.4 (.250)	7.3 (.290)	32.5 (1.280)	7.3 (.290)	3.3 (.130)	2.8 (.110)	6.4 (.250)	11.0 (.435)
B-151-11	10.0 (.395)	11.5 (.450)	35.5 (1.395)	11.5 (.450)	4.5 (.175)	4.0 (.155)	10.0 (.395)	13.0 (.510)
B-151-13	13.0 (.510)	15.1 (.595)	45.5 (1.790)	15.1 (.595)	7.0 (.275)	6.5 (.255)	13.0 (.510)	17.0 (.670)
B-151-17	16.5 (.650)	19.0 (.750)	55.0 (2.165)	18.0 (.710)	9.0 (.355)	8.0 (.315)	16.0 (.630)	23.0 (.905)

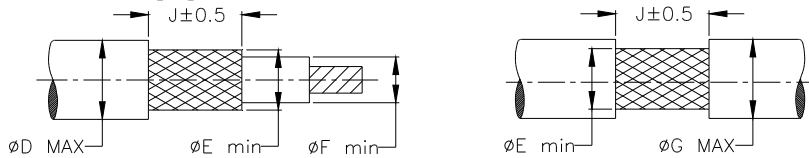
### MATERIAL


1. INSULATION SLEEVE: Radiation cross-linked modified polyolefin. Transparent clear.
2. SOLDER PREFORM WITH FLUX:  
SOLDER: TYPE Cd18 per ANSI J-STD-006.  
FLUX: TYPE ROM1 per ANSI J-STD-004.
3. & 4. MELTABLE SEALING RINGS: Thermally stabilized thermoplastic.
5. GROUND LEAD: RAYCHEM 100G0111-1.00-9, stranded tin plated copper. Color: white.

### APPLICATION

1. These controlled soldering devices are designed for termination of a bare or tin plated copper shield on a cable having an insulation rated for at least 85°C.
2. Temperature range: -55°C to +125°C.
3. For installation procedure and application equipment consult RPIP-688-01.

For best results, prepare the cable as shown:



		TE Connectivity 300 Constitution Dr Menlo Park, CA 94025, U.S.A.	<b>TITLE:</b> <b>SOLDERSLEEVE LOW-FIRE-HAZARD                  WITH PRE-INSTALLED LEAD.</b>		
Unless otherwise specified dimensions are in millimeters. [Inches dimensions are shown in brackets]		Raychem Devices	<b>DOCUMENT NO.:</b> <b>B-151-XX</b>		
<b>TOLERANCES:</b> 0.00 N/A 0.0 N/A 0 N/A	<b>ANGLES:</b> N/A  <b>ROUGHNESS</b> IN MICRON	TE Connectivity reserves the right to amend this drawing at any time. Users should evaluate the suitability of the product for their application.		<b>REV:</b> E1	<b>DATE:</b> 15-Apr-11
<b>REVISED BY:</b> HMR	<b>CAGE CODE:</b> 06090	<b>ECO NUMBER:</b> ECO-11-005139	<b>SCALE:</b> NTS	<b>SIZE:</b> A	<b>SHEET:</b> 1 of 1