



Chipsmall Limited consists of a professional team with an average of over 10 year of expertise in the distribution of electronic components. Based in Hongkong, we have already established firm and mutual-benefit business relationships with customers from,Europe,America and south Asia,supplying obsolete and hard-to-find components to meet their specific needs.

With the principle of “Quality Parts,Customers Priority,Honest Operation,and Considerate Service”,our business mainly focus on the distribution of electronic components. Line cards we deal with include Microchip,ALPS,ROHM,Xilinx,Pulse,ON,Everlight and Freescale. Main products comprise IC,Modules,Potentiometer,IC Socket,Relay,Connector.Our parts cover such applications as commercial,industrial, and automotives areas.

We are looking forward to setting up business relationship with you and hope to provide you with the best service and solution. Let us make a better world for our industry!



## Contact us

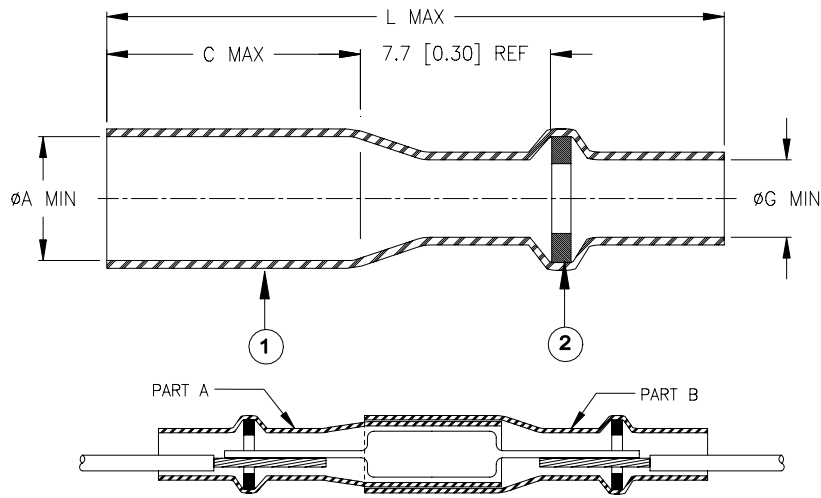
Tel: +86-755-8981 8866 Fax: +86-755-8427 6832

Email & Skype: info@chipsmall.com Web: www.chipsmall.com

Address: A1208, Overseas Decoration Building, #122 Zhenhua RD., Futian, Shenzhen, China



## SPECIFICATION CONTROL DRAWING



Product Revision		Product Dimensions			Wire Dimensions			Component Information				Qty: Item 2	
Product Name		ØA min	C max	L max	ØD min	ØD max ØG min	AWG	LC		DC			
Kit	Sub-assemblies							min	max	min	max		
B-155-2001	B-155-2001-A	A	2.2 [0.085]	5.5 [0.215]	22.0 [0.865]	1.1 [0.045]	1.5 [0.060]	22/24	6.5 [0.255]	8.0 [0.315]	1.8 [0.070]	2.2 [0.085]	1
	B-155-2001-B	A	2.9 [0.114]										1
B-155-2002	B-155-2002-A	A	3.2 [0.125]	7.5 [0.295]	27.0 [1.060]	1.1 [0.045]	2.3 [0.090]	20/24	9.0 [0.355]	11.0 [0.435]	2.5 [0.100]	3.2 [0.125]	2
	B-155-2002-B	A	3.7 [0.145]										2
B-155-2003	B-155-2003-A	A	3.7 [0.145]	9.5 [0.375]	27.0 [1.060]	1.8 [0.070]	2.8 [0.110]	18/20	10.5 [0.415]	15.0 [0.590]	3.0 [0.120]	3.7 [0.145]	1
	B-155-2003-B	A	4.4 [0.175]										1

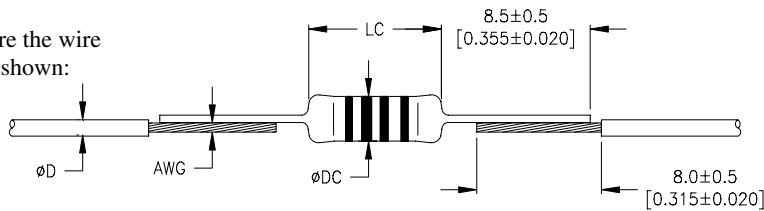
### MATERIALS

- INSULATION SLEEVE: Heat-shrinkable, transparent clear, radiation cross-linked polyolefin.
- SOLDER PREFORM WITH FLUX: Qty: see table (one solder washer shown).  
 SOLDER: TYPE Sn42Bi58 per ANSI / J-STD-006.  
 FLUX: TYPE ROM1 per ANSI / J-STD-004.

### APPLICATION

- These parts are designed to provide an inline termination of a component, rated for +105°C minimum, and meeting the dimensional criteria listed.
- Temperature range: -55°C to +125°C.
- For installation procedure and application equipment, consult Tyco Electronics / Raychem RPIP 824-00.

For best results, prepare the wire and the component as shown:



		Tyco Electronics Corporation 300 Constitution Drive, Menlo Park, CA. 94025, U.S.A.				TITLE: <b>SOLDERSLEEVE DEVICE IN-LINE                  COMPONENT TERMINATION                  RoHS COMPLIANT</b>	
Unless otherwise specified dimensions are in millimeters. [Inches dimensions are shown in brackets]				DOCUMENT NO.: <b>B-155-200X</b>			
TOLERANCES: 0.00 N/A 0.0 N/A 0 N/A		ANGLES: N/A ROUGHNESS IN MICRON		Tyco Electronics reserves the right to amend this drawing at any time. Users should evaluate the suitability of the product for their application.			
PROD. REV.: SEE TABLE		DOC. ISSUE: 1		DATE: 11-Aug-05		PREPARED BY: mforonda	
DCR NUMBER: D050296		REPLACES: ---		CAGE CODE: 06090		SCALE: ---	
SIZE: A		SHEET: 1 of 1					

© 2005 Tyco Electronics Corporation. All rights reserved.

If this document is printed it becomes uncontrolled. Check for the latest revision.