



Chipsmall Limited consists of a professional team with an average of over 10 year of expertise in the distribution of electronic components. Based in Hongkong, we have already established firm and mutual-benefit business relationships with customers from,Europe,America and south Asia,supplying obsolete and hard-to-find components to meet their specific needs.

With the principle of “Quality Parts,Customers Priority,Honest Operation,and Considerate Service”,our business mainly focus on the distribution of electronic components. Line cards we deal with include Microchip,ALPS,ROHM,Xilinx,Pulse,ON,Everlight and Freescale. Main products comprise IC,Modules,Potentiometer,IC Socket,Relay,Connector.Our parts cover such applications as commercial,industrial, and automotives areas.

We are looking forward to setting up business relationship with you and hope to provide you with the best service and solution. Let us make a better world for our industry!



Contact us

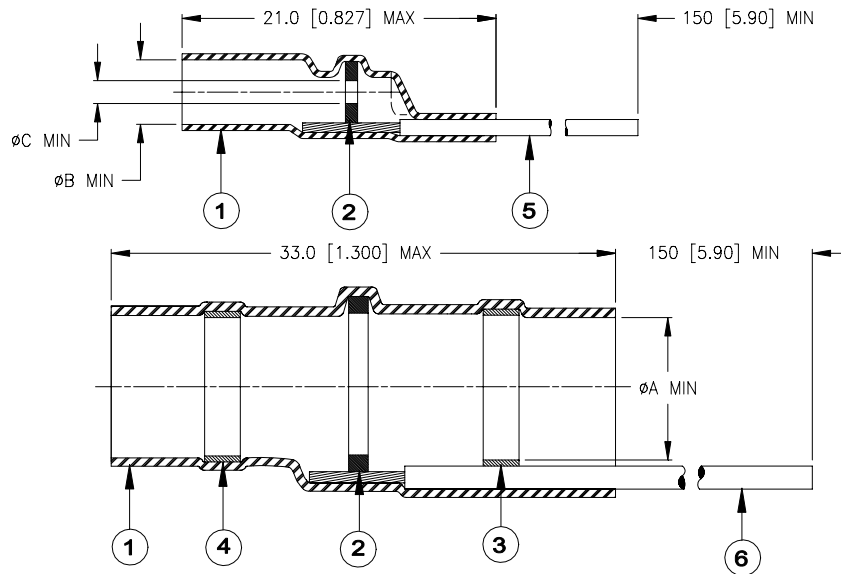
Tel: +86-755-8981 8866 Fax: +86-755-8427 6832

Email & Skype: info@chipsmall.com Web: www.chipsmall.com

Address: A1208, Overseas Decoration Building, #122 Zhenhua RD., Futian, Shenzhen, China



SPECIFICATION CONTROL DRAWING



Product Revision		Product Dimensions			Cable Dimensions	
Product Name		øA min	øB min	øC min	Typical Cable	øE min
B-155-4058-35-22-5/9	A	6.0 [0.235]	3.1 [0.120]	1.0 [0.040]	RG 58	3.3 [0.130]
B-155-4059-35-22-5/9	A	7.0 [0.275]	3.9 [0.155]		RG59	3.7 [0.145]
B-155-4174-35-22-5/9	A	4.5 [0.175]	1.7 [0.065]		RG174	2.3 [0.090]

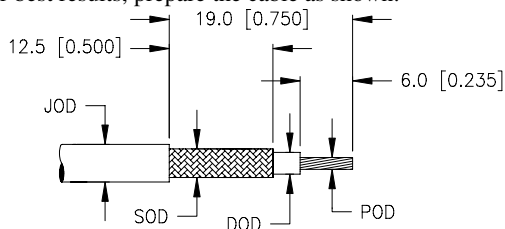
MATERIALS

1. INSULATION SLEEVE: Heat-shrinkable, transparent clear, radiation cross-linked modified polyolefin.
2. SOLDER PREFORM WITH FLUX:
 - SOLDER: TYPE Sn42Bi58 per ANSI / J-STD-006.
 - FLUX: TYPE ROM1 per ANSI / J-STD-004.
3. MELTABLE RING: Thermally stabilized thermoplastic. Color: clear.
4. MELTABLE RING: Thermally stabilized thermoplastic. Color: blue.
5. CONDUCTOR LEAD: Cross-linked polyolefin insulated, stranded, tin-plated copper. Color: white.
6. GROUND LEAD: Cross-linked polyolefin insulated, stranded, tin plated-copper. Color: green.

APPLICATION

1. These parts are designed to provide an environment protected coaxial termination on cables, rated for at least +65°C minimum, meeting the dimensional criteria listed, having bare copper, tin or silver-plated shields and conductors.
2. Temperature range: -55°C to +125°C.
3. Install using Tyco Electronics-approved convection heating tools in accordance with Tyco Electronics / Raychem installation procedure RPIP-824-00.

For best results, prepare the cable as shown:



Part selection:

- JOD: Cable jacket must be less than øA min.
- DOD: Cable dielectric must be less than øB min.
- SOD: Cable shield must be greater than øE min.
- POD: Conductor must be between øC min and 0.3 [0.012]

tyco Electronics		Tyco Electronics Corporation 300 Constitution Drive, Menlo Park, CA. 94025, U.S.A.		Raychem		TITLE: COAXIAL TERMINATION KIT RoHS COMPLIANT	
Unless otherwise specified dimensions are in millimeters. [Inches dimensions are shown in brackets]				DOCUMENT NO.: B-155-4XXX-35-22-5/9			
TOLERANCES: 0.00 N/A 0.0 N/A 0 N/A	ANGLES: N/A ROUGHNESS IN MICRON	Tyco Electronics reserves the right to amend this drawing at any time. Users should evaluate the suitability of the product for their application.		PROD. REV.: SEE TABLE	DOC. ISSUE: 1	DATE: 11-Aug-05	
PREPARED BY: mforonda	DCR NUMBER: D050295	REPLACES: ---		CAGE CODE : 06090	SCALE: ---	SIZE: A	SHEET: 1 of 1

© 2005 Tyco Electronics Corporation. All rights reserved.

If this document is printed it becomes uncontrolled. Check for the latest revision.