



Chipsmall Limited consists of a professional team with an average of over 10 year of expertise in the distribution of electronic components. Based in Hongkong, we have already established firm and mutual-benefit business relationships with customers from,Europe,America and south Asia,supplying obsolete and hard-to-find components to meet their specific needs.

With the principle of "Quality Parts,Customers Priority,Honest Operation,and Considerate Service",our business mainly focus on the distribution of electronic components. Line cards we deal with include Microchip,ALPS,ROHM,Xilinx,Pulse,ON,Everlight and Freescale. Main products comprise IC,Modules,Potentiometer,IC Socket,Relay,Connector.Our parts cover such applications as commercial,industrial, and automotives areas.

We are looking forward to setting up business relationship with you and hope to provide you with the best service and solution. Let us make a better world for our industry!



Contact us

Tel: +86-755-8981 8866 Fax: +86-755-8427 6832

Email & Skype: info@chipsmall.com Web: www.chipsmall.com

Address: A1208, Overseas Decoration Building, #122 Zhenhua RD., Futian, Shenzhen, China

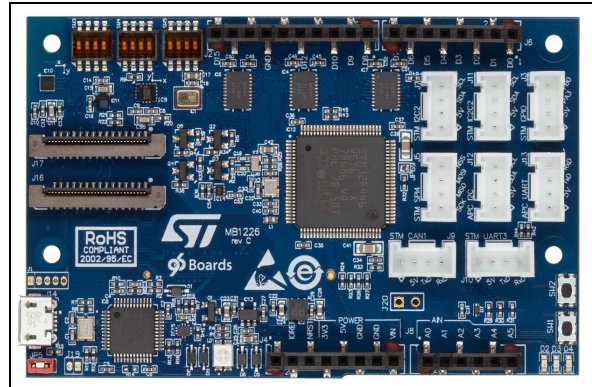


96Boards Mezzanine board with STM32F446 MCU and sensors

Data brief

Features

- Based on STM32F446 MCU
ARM® Cortex® -M4 180MHz in LQFP100 package
- Compliant with the 96Boards CE standard
- Two types of extension resources:
 - 96Boards high/low-speed connectivity
 - Arduino™ Uno Revision 3 and Grove™ connectivity
- ARM® mbed™ -enabled (see <http://mbed.org>) planned for the first quarter of 2016
- Integrated MEMS sensors:
 - 9-axis accelerometer/gyroscope/magnetometer
 - pressure, microphone
- On-board ST-LINK/V2-1 debugger/programmer
- USB re-enumeration capability:
 - Virtual Com port
 - Mass storage
 - Debug port
- Supported by wide choice of Integrated Development Environments (IDEs) including IAR™, Keil®, GCC-based IDEs, ARM® mbed™ online



1. Picture not contractual

Description

The 96Boards Mezzanine board with the STM32F446 MCU (B-F446E-96B01A) enables users to prototype systems that are aware of their environment, thanks to the embedded sensors for movement, pressure and sound. It can directly be plugged on top of the 96Boards CE cards and supports multiple expansion possibilities through the Arduino™ Uno Revision 3 or the Grove™ connectivity. The integrated ST-LINK/V2-1 debugger facilitates software development, drag-and-drop programming and provides a direct access to the ARM® mbed™ on-line resources.



Revision history

Table 1. Document revision history

Date	Revision	Changes
21-Dec-2015	1	Initial release.
07-Jan-2016	2	Updated <i>Features</i> .
15-Jul-2016	3	Updated picture (new revision of the PCB).

IMPORTANT NOTICE – PLEASE READ CAREFULLY

STMicroelectronics NV and its subsidiaries ("ST") reserve the right to make changes, corrections, enhancements, modifications, and improvements to ST products and/or to this document at any time without notice. Purchasers should obtain the latest relevant information on ST products before placing orders. ST products are sold pursuant to ST's terms and conditions of sale in place at the time of order acknowledgement.

Purchasers are solely responsible for the choice, selection, and use of ST products and ST assumes no liability for application assistance or the design of Purchasers' products.

No license, express or implied, to any intellectual property right is granted by ST herein.

Resale of ST products with provisions different from the information set forth herein shall void any warranty granted by ST for such product.

ST and the ST logo are trademarks of ST. All other product or service names are the property of their respective owners.

Information in this document supersedes and replaces information previously supplied in any prior versions of this document.

© 2016 STMicroelectronics – All rights reserved

