



Chipsmall Limited consists of a professional team with an average of over 10 year of expertise in the distribution of electronic components. Based in Hongkong, we have already established firm and mutual-benefit business relationships with customers from,Europe,America and south Asia,supplying obsolete and hard-to-find components to meet their specific needs.

With the principle of “Quality Parts,Customers Priority,Honest Operation,and Considerate Service”,our business mainly focus on the distribution of electronic components. Line cards we deal with include Microchip,ALPS,ROHM,Xilinx,Pulse,ON,Everlight and Freescale. Main products comprise IC,Modules,Potentiometer,IC Socket,Relay,Connector.Our parts cover such applications as commercial,industrial, and automotives areas.

We are looking forward to setting up business relationship with you and hope to provide you with the best service and solution. Let us make a better world for our industry!



Contact us

Tel: +86-755-8981 8866 Fax: +86-755-8427 6832

Email & Skype: info@chipsmall.com Web: www.chipsmall.com

Address: A1208, Overseas Decoration Building, #122 Zhenhua RD., Futian, Shenzhen, China



4 TO 8 GHz BANDPASS FILTER**B056RC4S****FEATURES**

- Small Size
- Fully Shielded Component
- Frequency Stable over Temperature

DESCRIPTION

Surface mount, fully shielded, thin film filter designed for use on PCB 8-12 mils thick with permittivity of 3.0-3.8.

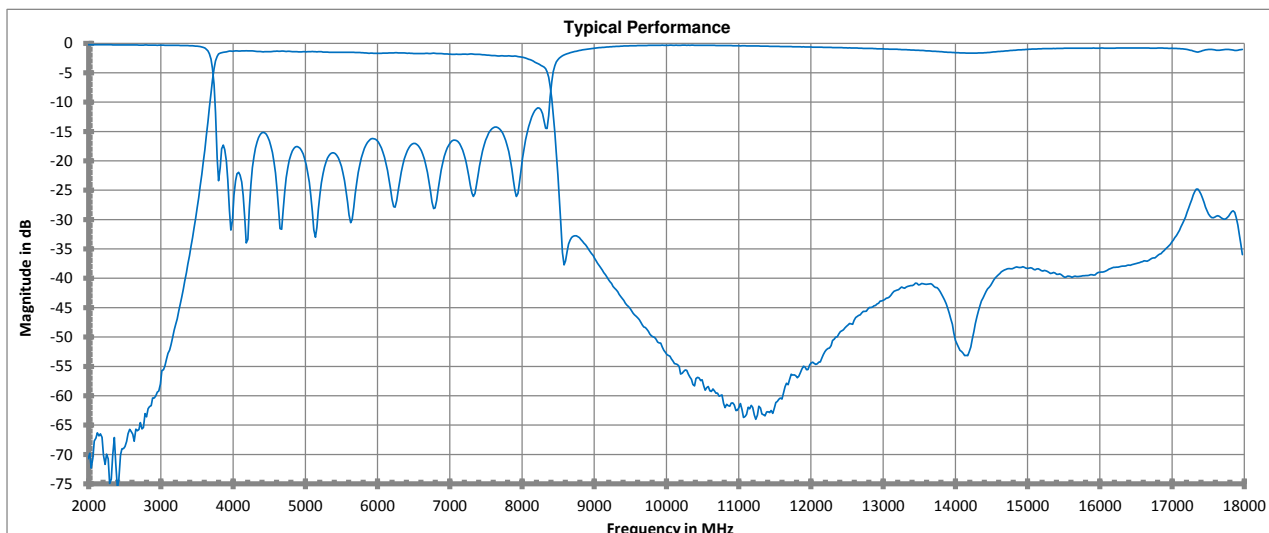
Applications include C-Band, Satellite Communications, Satellite TV, weather and

Electrical Specifications

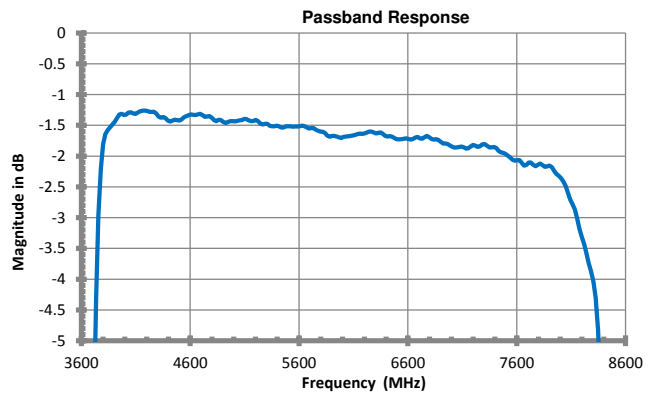
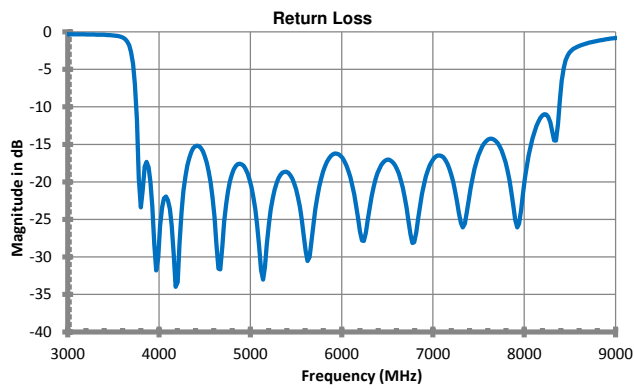
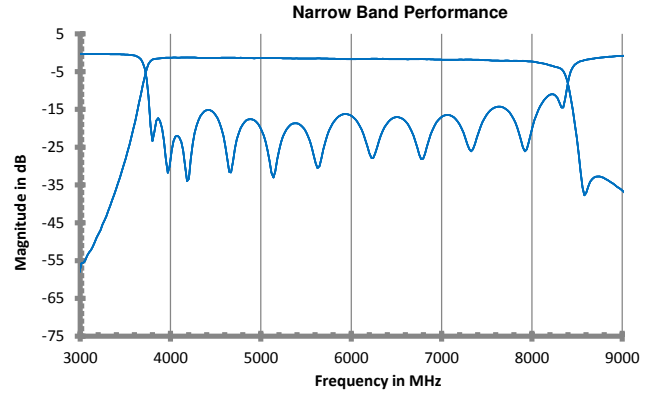
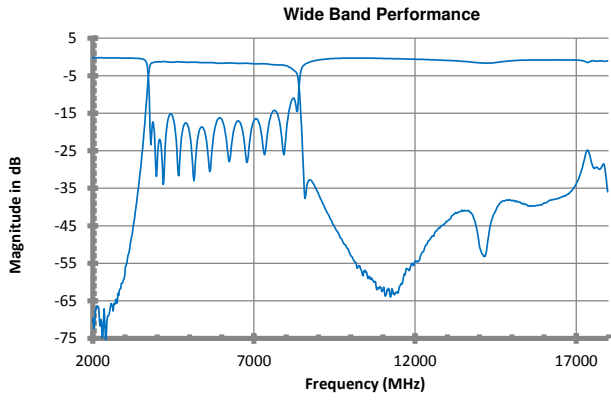
Center Frequency	6000 MHz	
Passband	4000 - 8000 MHz	
Insertion Loss	3.0 dB	@ 25C
	3.5 dB	-40C to +85C
VSWR	1.5:1	4000 MHz to 8000 MHz*
Rejection	40 dB	dc to 3000 MHz
	40 dB	9500 MHz to 12000 MHz
Usable Temp Range	-55 to +125 degree C	
<small>*50 Ohm System</small>		

Mechanical

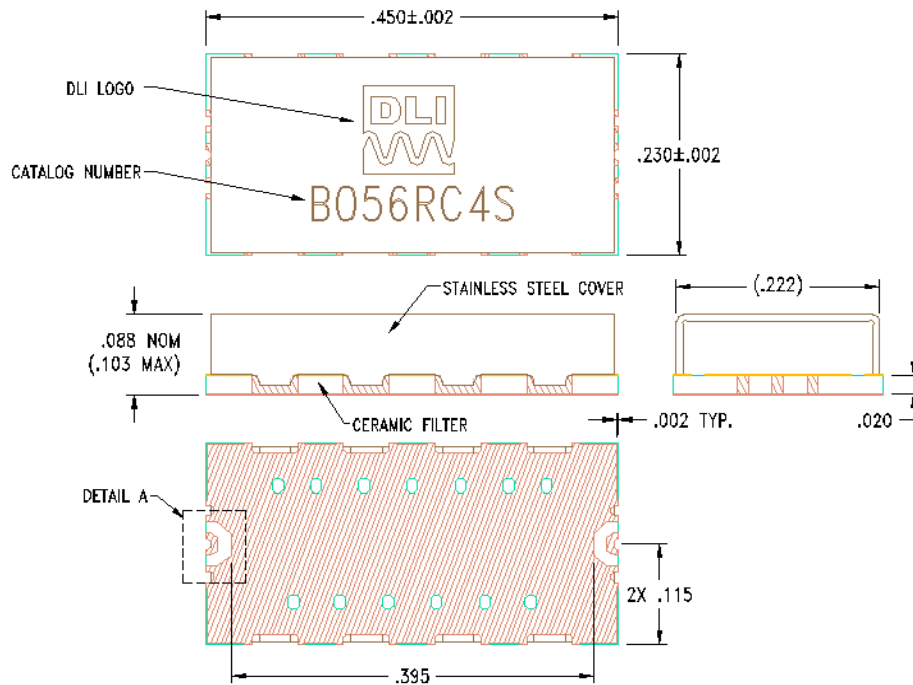
Footprint LxW	0.450 x 0.230 inch	inch
	[11.43 x 5.84]	mm
Height	0.1 [2.54]	Inch [mm]



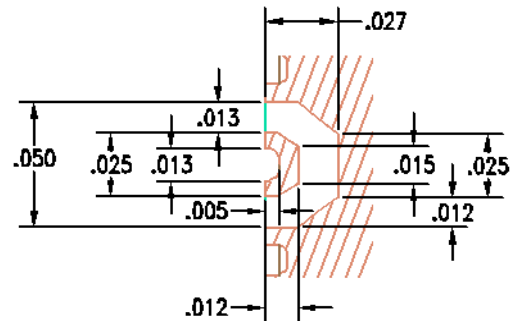
Catalog specifications subject to change without notice
RO4350B is a product of Rogers Corporation



Mechanical Drawing



**DETAIL A
(2 PLACES)**



All measurements inches

Mounting Information

PCB ground pattern length and width can be 0.002-0.003 inches larger than filter footprint. Dimensions of filter launch and PCB launch pattern should be closely matched. It is suggested that PCB ground metal be pulled back from RF I/O trace to account for component alignment tolerance. Ground via depth and spacing should be set so as not to create any resonances at the frequency of operation. Reference SMT Filter Mounting application note for additional mounting information.

