



Chipsmall Limited consists of a professional team with an average of over 10 year of expertise in the distribution of electronic components. Based in Hongkong, we have already established firm and mutual-benefit business relationships with customers from,Europe,America and south Asia,supplying obsolete and hard-to-find components to meet their specific needs.

With the principle of “Quality Parts,Customers Priority,Honest Operation,and Considerate Service”,our business mainly focus on the distribution of electronic components. Line cards we deal with include Microchip,ALPS,ROHM,Xilinx,Pulse,ON,Everlight and Freescale. Main products comprise IC,Modules,Potentiometer,IC Socket,Relay,Connector.Our parts cover such applications as commercial,industrial, and automotives areas.

We are looking forward to setting up business relationship with you and hope to provide you with the best service and solution. Let us make a better world for our industry!



## Contact us

Tel: +86-755-8981 8866 Fax: +86-755-8427 6832

Email & Skype: info@chipsmall.com Web: www.chipsmall.com

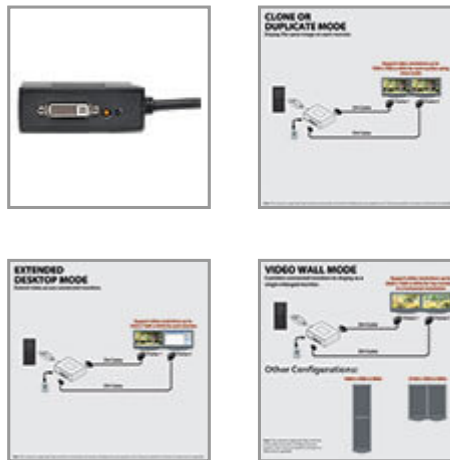
Address: A1208, Overseas Decoration Building, #122 Zhenhua RD., Futian, Shenzhen, China



- Computer with DisplayPort 1.2-compatible graphics card (e.g. AMD Radeon with AMD Eyefinity) required for video wall mode. Backward compatible with most DisplayPort 1.1a equipment running current graphics drivers with feature set limited to that of your equipment. Compatibility with older graphics cards not guaranteed.
- MST compliant DisplayPort 1.2 graphics cards are limited to a bandwidth of 21.6 Gbps amongst all monitors, with higher resolution monitors using up more bandwidth. 1080p monitors will use up approximately 22% of bandwidth, whereas 4K monitors will use 40% or more. As each monitor will be different, it is necessary to verify the percentage of bandwidth being used by each monitor in the display settings interface for your graphics card. If the total percentage of bandwidth taken up by all of the connected monitors exceeds 100%, an image will not display on one or more of them.
- Maximum supported video resolutions and number of monitors depend on your graphics card. Check graphics card specifications to determine its capabilities.

## 2-Port DisplayPort 1.2 to DVI Multi-Stream Transport (MST) Hub, 1920 x 1080 (1080p), TAA

MODEL NUMBER: **B156-002-DVI-V2**



Displays the same image on 2 DVI monitors, extends the desktop across them, or combines both into one large monitor. Ideal for digital signage in schools, churches, conference rooms, trade shows and retail outlets.

### Description

The B156-002-DVI-V2 2-Port DisplayPort 1.2 to DVI MST Hub connects two DVI monitors to the DisplayPort output on your computer. Ideal for digital signage in schools, churches, conference rooms, trade shows, hotels and retail outlets, this hub allows you to display the same image on both monitors, extend the desktop across them, or combine both as one large monitor in video wall mode.

The B156-002-DVI-V2 is compliant with DisplayPort 1.2 and backward compatible with versions 1.1 and 1.1a with the feature set being limited to that of your equipment. It supports high-definition video resolutions up to 1920 x 1080 (1080p) at 60 Hz. Expanded video resolutions are supported when

### Highlights

- Supports HD video resolutions up to 1920 x 1080 (1080p)
- Built-in 6 in. cable connects directly to DisplayPort source
- Supports up to 48-bit Deep Color (16 bits per channel)
- Works with all operating systems
- Supports DTS-HD, Dolby TrueHD and 7.1-channel surround sound

### System Requirements

- Computer with DisplayPort 1.2-compatible graphics card (e.g. AMD Radeon with AMD Eyefinity) required for video wall mode.
- Backward compatible with most DisplayPort 1.1a equipment running current graphics drivers with feature set limited to that of your equipment. Compatibility with older graphics cards not guaranteed.
- Mac OS X does not support MST for NVIDIA and Intel Graphics Processor Units, limiting video display on connected monitors to mirror mode.
- Maximum supported video resolutions and number of monitors depend on your graphics card. Check graphics card specifications to determine its capabilities.
- Monitor(s) with DVI input.



displaying in video wall mode, such as 3840 x 1080 in a horizontal 1 x 2 monitor configuration or 1920 x 2160 in a vertical 2 x 1 monitor configuration. The B156-002-DVI-V2 also supports HDCP, EDID, DDC and 48-bit Deep Color (16 bits per channel), as well as DTS-HD, Dolby TrueHD and 7.1-channel surround sound audio.

This MST hub works with all operating systems. Plug-and-play convenience means no software, drivers or external power supply is needed. A built-in six-inch cable connects directly to a DisplayPort source. LEDs indicate when the monitors are receiving a signal. The B156-002-DVI-V2 complies with the Federal Trade Agreements Act (TAA) for GSA Schedule purchases.

## Features

### Connects 2 DVI Monitors to Your Computer's DisplayPort Output

- Ideal for digital signs in schools, churches, conference rooms, trade shows and retail settings
- Displays same image on 2 monitors simultaneously in mirror mode
- Extends desktop across 2 monitors in extended mode
- Combines 2 monitors into one large monitor in video wall mode
- Built-in 6 in. cable connects directly to DisplayPort source
- LEDs indicate when monitors are receiving a signal

### Meets the Latest Performance Standards

- Supports HD video resolutions up to 1920 x 1080 (1080p) @ 60 Hz
- Expanded video resolutions are supported in video wall mode, such as 3840 x 1080 in a horizontal 1 x 2 configuration or 1920 x 2160 in a vertical 2 x 1 configuration
- Supports HDCP, EDID and DDC
- Supports 48-bit Deep Color (16 bits per channel)
- Supports DTS-HD, Dolby TrueHD and 7.1-channel surround sound audio

### Easy to Use Almost Anywhere

- Works with all operating systems
- Plug and play—no software, drivers or external power supply required
- Included USB Micro-B cable provides power

### TAA Compliant

- Complies with Federal Trade Agreements Act (TAA) for GSA Schedule purchases

## Package Includes

- B156-002-DVI-V2 2-Port DisplayPort 1.2 to DVI MST Hub
- USB Micro-B cable, 3 ft.
- Owner's manual

## Specifications

OVERVIEW	
UPC Code	037332193377
AC Adapter	N/A



Technology	DVI (all types); DisplayPort (all types)
<b>PHYSICAL</b>	
Shipping Dimensions (hwd / in.)	1.800 x 5.400 x 7.800
Shipping Dimensions (hwd / cm)	4.57 x 13.72 x 19.81
Shipping Weight (lbs.)	0.4600
Shipping Weight (kg)	0.21
Unit Dimensions (hwd / in.)	1 x 3 x 2.4
Unit Dimensions (hwd / cm)	2.54 x 7.62 x 6.15
Unit Weight (lbs.)	0.2
Unit Weight (kg)	0.09
Color	Black
<b>CONNECTIONS</b>	
Ports	2
Side A - Connector 1	DISPLAYPORT (MALE)
Side B - Connector 1	(2) DVI-I DUAL-LINK (FEMALE) (WIRED TO DVI-D SINGLE-LINK)
<b>CERTIFICATIONS</b>	
Approvals	CE, FCC, RoHS, and REACH
<b>WARRANTY</b>	
Product Warranty Period (Worldwide)	3-year limited warranty

© 2018 Tripp Lite. All rights reserved. All product and company names are trademarks or registered trademarks of their respective holders. Use of them does not imply any affiliation with or endorsement by them. Tripp Lite has a policy of continuous improvement. Specifications are subject to change without notice. Tripp Lite uses primary and third-party agencies to test its products for compliance with standards. See a list of Tripp Lite's testing agencies: <https://www.tripplite.com/products/product-certification-agencies>