



Chipsmall Limited consists of a professional team with an average of over 10 year of expertise in the distribution of electronic components. Based in Hongkong, we have already established firm and mutual-benefit business relationships with customers from,Europe,America and south Asia,supplying obsolete and hard-to-find components to meet their specific needs.

With the principle of "Quality Parts,Customers Priority,Honest Operation,and Considerate Service",our business mainly focus on the distribution of electronic components. Line cards we deal with include Microchip,ALPS,ROHM,Xilinx,Pulse,ON,Everlight and Freescale. Main products comprise IC,Modules,Potentiometer,IC Socket,Relay,Connector.Our parts cover such applications as commercial,industrial, and automotives areas.

We are looking forward to setting up business relationship with you and hope to provide you with the best service and solution. Let us make a better world for our industry!



## Contact us

Tel: +86-755-8981 8866 Fax: +86-755-8427 6832

Email & Skype: info@chipsmall.com Web: www.chipsmall.com

Address: A1208, Overseas Decoration Building, #122 Zhenhua RD., Futian, Shenzhen, China





# *SAW Components*

*Data Sheet B7722*

Data Sheet

A large, stylized, 3D-rendered graphic of the EPCOS logo. The letters "EPCOS" are rendered in a white, glowing, sans-serif font, appearing to be part of a larger, curved structure that resembles a stylized globe or a series of overlapping planes. The background is dark and textured.



**SAW Components**

**B7722**

**Low-Loss Filter**

**1575,42 MHz**

**Data Sheet**

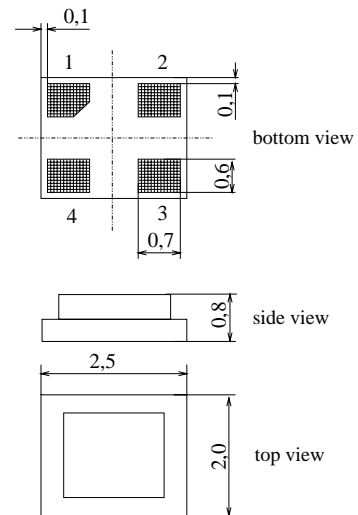
**Chip Sized SAW Package**

**Features**

- Low loss RF filter for GPS receivers
- Unbalanced to unbalanced operation
- Low amplitude ripple
- Package for **Surface Mounted Technology (SMT)**

**Terminals**

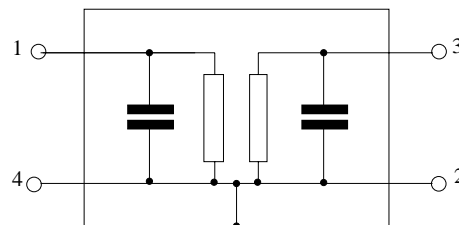
- Ni, gold-plated



Dimensions in mm, approx. weight 0,01 g

**Pin configuration**

- 1 Input
- 3 Output
- 2,4 Ground



Type	Ordering code	Marking and Package according to	Packing according to
B7722	B39162-B7722-C510	C61157-A7-A80	F61074-V8111-Z000

**Electrostatic Sensitive Device (ESD)**

**Maximum ratings**

Operable temperature range	$T$	- 40/+ 85	°C	source and load impedance 50 $\Omega$ continuous wave signal
Storage temperature range	$T_{stg}$	- 40/+ 85	°C	
DC voltage	$V_{DC}$	3	V	
Input power max. 1573,42 ... 1577,42 MHz	$P_{IN}$	3	dBm	
50,0...1460 and 1710 ... 4000 MHz	$P_{IN}$	15	dBm	



**SAW Components**

**B7722**

**Low-Loss Filter**

**1575,42 MHz**

**Data Sheet**

**Characteristics**

Operating temperature range:  $T_A = -30 \dots +85 \text{ }^\circ\text{C}$   
 Terminating source impedance:  $Z_S = 50 \text{ } \Omega \text{ unbal.}$   
 Terminating load impedance:  $Z_L = 50 \text{ } \Omega \text{ unbal.}$

		min.	typ.	max.	
<b>Nominal frequency</b>	$f_N$	—	1575,42	—	MHz
<b>Maximum insertion attenuation</b>	$\alpha_{\max}$				
1573,42MHz ... 1577,42 MHz		—	1,5	2,1	dB
1573,42MHz ... 1577,42MHz*)		—	1,5	1,8	dB
1574,42MHz ... 1576,42MHz**)		—	1,4	1,8	dB
<b>Amplitude ripple in passband (p-p)</b>	$\Delta\alpha$				
1573,42MHz ... 1577,42 MHz		—	0,1	0,5	dB
<b>Group delay</b>	$\tau$				
1573,42 ... 1577,42 MHz		—	18	50	ns
<b>Bandwidth</b>	$\alpha_{\text{rel}} \leq 3 \text{ dB}$	$B_{3\text{dB}}$	10	38	—
<b>Attenuation</b>	$\alpha$				
100,0MHz ... 824,0 MHz		35	42	—	dB
824,0MHz ... 850,0 MHz		40	45	—	dB
850,0MHz ... 1460,0 MHz		35	43	—	dB
1648,0 MHz ... 1660,0 MHz		25	30	—	dB
1660,0 MHz ... 1710,0 MHz		27	35	—	dB
1710,0 MHz ... 1750,0 MHz		33	40	—	dB
1750,0 MHz ... 1850,0 MHz		35	40	—	dB
1850,0 MHz ... 1910,0 MHz		40	48	—	dB
1910,0 MHz ... 2500,0 MHz		35	44	—	dB
2500,0 MHz ... 3500,0 MHz		30	35	—	dB
<b>VSWR</b>					
1573,42MHz ... 1577,42 MHz		—	1,4	1,8	

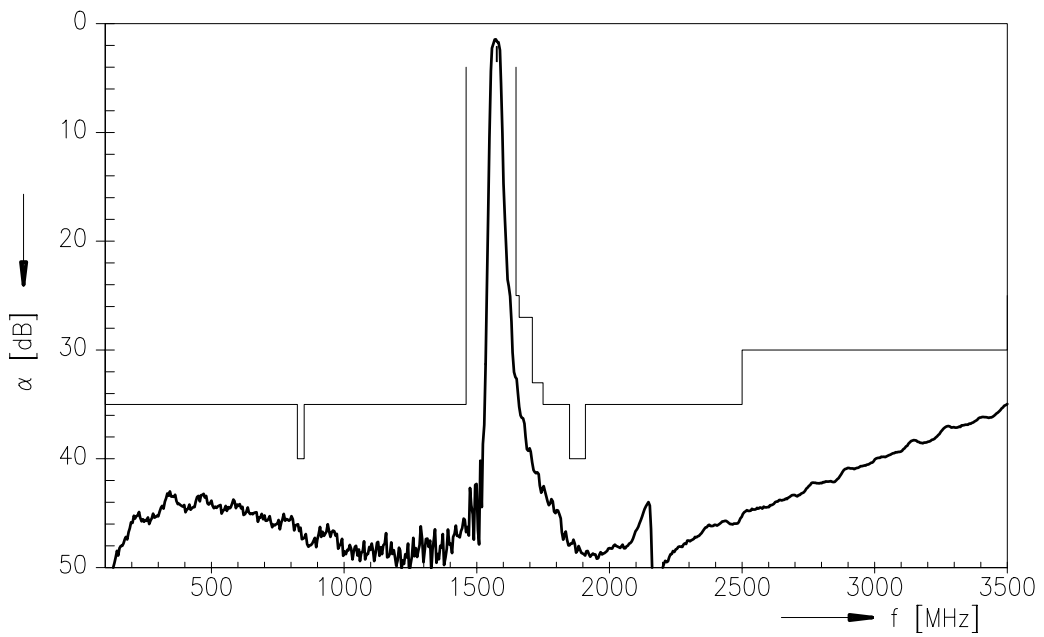
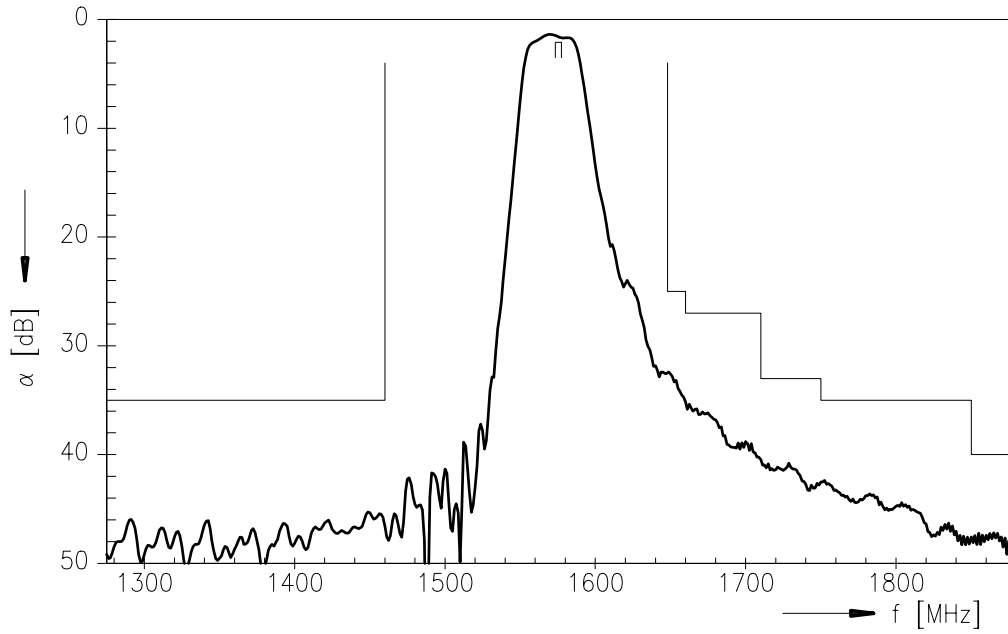
\*)  $T_A = 20 \text{ }^\circ\text{C}$

\*\*\*)  $T_A = -30 \dots +70 \text{ }^\circ\text{C}$



Data Sheet

Transfer function





**SAW Components**

**B7722**

**Low-Loss Filter**

**1575,42 MHz**

Data Sheet

**Published by EPCOS AG**

**SAW MC WT, P.O. Box 80 17 09, 81617 Munich, GERMANY**

**TEL ++49 89 636 09, FAX ++49 89 636 2 26 89**

© EPCOS AG 2002. Reproduction, publication and dissemination of this brochure and the information contained therein without EPCOS' prior express consent is prohibited.

Purchase orders are subject to the General Conditions for the Supply of Products and Services of the Electrical and Electronics Industry recommended by the ZVEI (German Electrical and Electronic Manufacturers' Association), unless otherwise agreed.

This brochure replaces the previous edition.

For questions on technology, prices and delivery please contact the Sales Offices of EPCOS AG or the international Representatives.

Due to technical requirements components may contain dangerous substances. For information on the type in question please also contact one of our Sales Offices.