



Chipsmall Limited consists of a professional team with an average of over 10 year of expertise in the distribution of electronic components. Based in Hongkong, we have already established firm and mutual-benefit business relationships with customers from,Europe,America and south Asia,supplying obsolete and hard-to-find components to meet their specific needs.

With the principle of “Quality Parts,Customers Priority,Honest Operation,and Considerate Service”,our business mainly focus on the distribution of electronic components. Line cards we deal with include Microchip,ALPS,ROHM,Xilinx,Pulse,ON,Everlight and Freescale. Main products comprise IC,Modules,Potentiometer,IC Socket,Relay,Connector.Our parts cover such applications as commercial,industrial, and automotives areas.

We are looking forward to setting up business relationship with you and hope to provide you with the best service and solution. Let us make a better world for our industry!



Contact us

Tel: +86-755-8981 8866 Fax: +86-755-8427 6832

Email & Skype: info@chipsmall.com Web: www.chipsmall.com

Address: A1208, Overseas Decoration Building, #122 Zhenhua RD., Futian, Shenzhen, China





SAW Components

Data Sheet B3501

Data Sheet

A large, stylized, 3D-rendered graphic of the EPCOS logo. The letters "EPCOS" are rendered in a bold, sans-serif font, appearing to be part of a curved, metallic-looking structure. The background is dark and textured, suggesting a globe or a complex circuit board layout.



SAW Components

B3501

Low-Loss Filter for Mobile Communication

183,6 MHz

Data Sheet



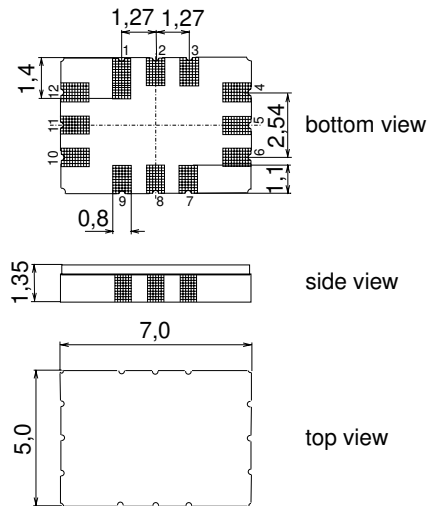
Features

- IF filter for mobile telephone
- Channel selection in CDMA systems
- Balanced or unbalanced
- High rejection, very small size
- Low amplitude ripple
- Package for **Surface Mounted Technology (SMT)**
- Filter surface passivated

Terminals

- Ni, gold plated

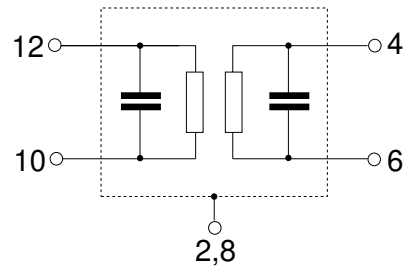
SMD ceramic package **QCC12E**



Dimensions in mm, approx. weight 0,25 g

Pin configuration

- 12 Input
- 10 Balanced input or ground
- 6 Output
- 4 Balanced output or ground
- 1, 2, 3, 7, 8, 9 To be grounded



Type	Ordering code	Marking and Package according to	Packing according to
B3501	B39181-B3501-H810	C61157-A7-A103	F61074-V8170-Z000

Electrostatic Sensitive Device (ESD)

Maximum ratings

Operable temperature range	T	- 40/+ 85	°C	
Storage temperature range	T_{stg}	- 40/+ 85	°C	
DC voltage	V_{DC}	0	V	
Source power	P_s	10	dBm	



SAW Components

B3501

Low-Loss Filter for Mobile Communication

183,6 MHz

Data Sheet



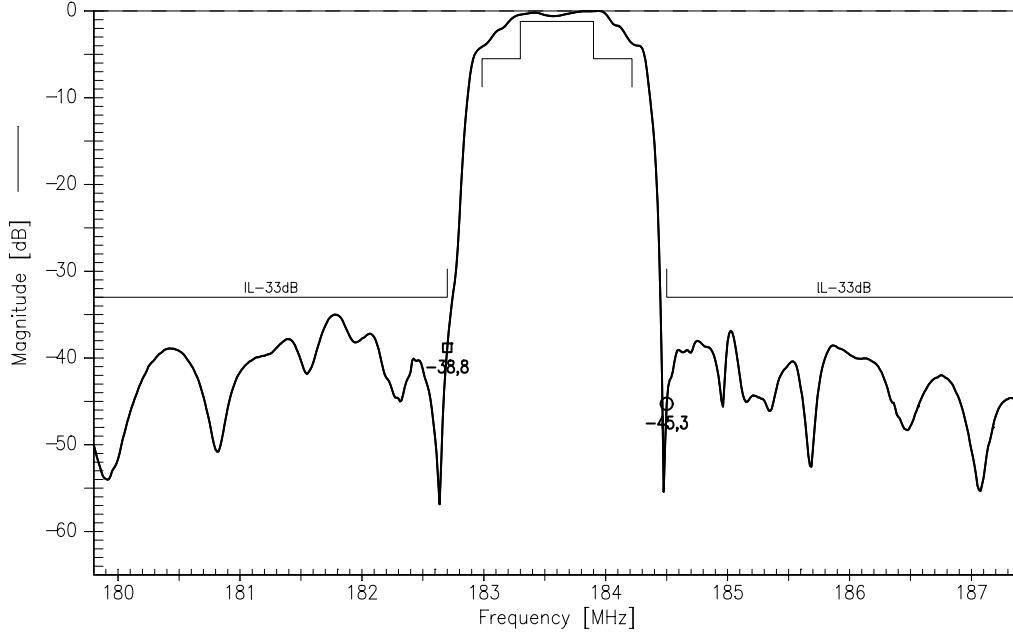
Characteristics

Specified temperature range: $T = -30^{\circ}\text{C} \dots +85^{\circ}\text{C}$
 Terminating source impedance: $Z_S = 300\Omega \parallel 44\text{nH}$
 Terminating load impedance: $Z_L = 675\Omega \parallel 54\text{nH}$

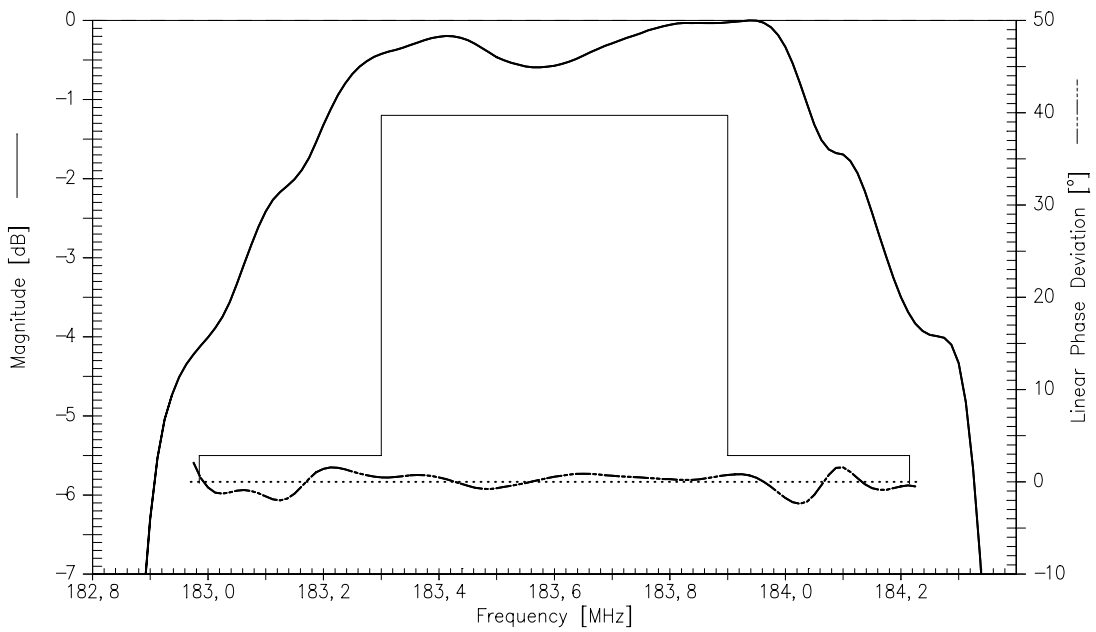
		min.	typ.	max.	
Nominal frequency	f_N	—	183,6	—	MHz
Minimum insertion attenuation (including loss in matching network without loss in balun)	α_{\min}	—	8,1	9,5	dB
Amplitude ripple	$\Delta\alpha$				
$f_N - 0,3 \text{ MHz} \dots f_N + 0,3 \text{ MHz}$		—	0,6	1,2	dB
Phase linearity (rms deviation)					
$f_N - 0,615\text{MHz} \dots f_N + 0,615 \text{ MHz}$		—	1,3	2,8	°
Relative attenuation (relative to α_{\min})	α_{rel}				
$f_N \pm 0,615\text{MHz}$		—	4,0	5,5	dB
$f_N - 0,9 \text{ MHz}$		33	39	—	dB
$f_N + 0,9 \text{ MHz}$		33	45	—	dB
$f_N - 1,25 \text{ MHz}$		33	44	—	dB
$f_N + 1,25 \text{ MHz}$		33	39	—	dB
$f_N - 1,7 \text{ MHz}$		33	37	—	dB
$f_N + 1,7 \text{ MHz}$		33	43	—	dB
$f_N \pm 2,05 \text{ MHz}$		33	42	—	dB
$f_N - 9,0 \text{ MHz} \dots f_N - 1,25 \text{ MHz}$		33	35	—	dB
$f_N + 1,25 \text{ MHz} \dots f_N + 9,0 \text{ MHz}$		33	37	—	dB



Normalized transfer function (measurement):



Normalized transfer function (measurement, passband):





SAW Components

B3501

Low-Loss Filter for Mobile Communication

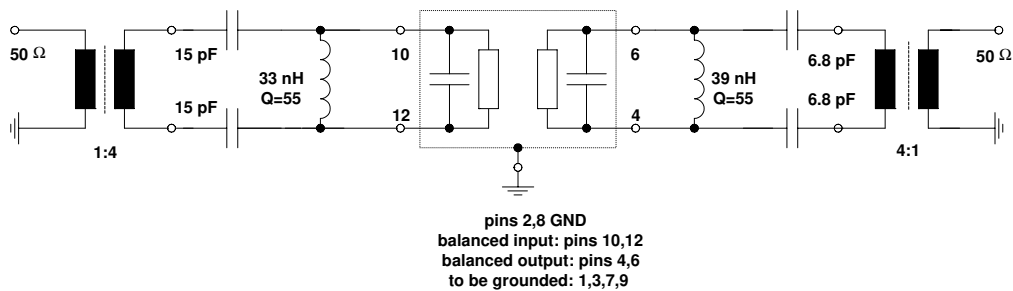
183,6 MHz

Data Sheet



Test matching network

(Element values depend on pcb layout)



Published by EPCOS AG

Surface Acoustic Wave Components Division, SAW CE AE PD

P.O. Box 80 17 09, D-81617 München

© EPCOS AG 2003. All Rights Reserved. Reproduction, publication and dissemination of this brochure and the information contained therein without EPCOS' prior express consent is prohibited.

The information contained in this brochure describes the type of component and shall not be considered as guaranteed characteristics. Purchase orders are subject to the General Conditions for the Supply of Products and Services of the Electrical and Electronics Industry recommended by the ZVEI (German Electrical and Electronic Manufacturers' Association), unless otherwise agreed.

This brochure replaces the previous edition.

For questions on technology, prices and delivery please contact the Sales Offices of EPCOS AG or the international Representatives.

Due to technical requirements components may contain dangerous substances. For information on the type in question please also contact one of our Sales Offices.