



Chipsmall Limited consists of a professional team with an average of over 10 year of expertise in the distribution of electronic components. Based in Hongkong, we have already established firm and mutual-benefit business relationships with customers from,Europe,America and south Asia,supplying obsolete and hard-to-find components to meet their specific needs.

With the principle of “Quality Parts,Customers Priority,Honest Operation,and Considerate Service”,our business mainly focus on the distribution of electronic components. Line cards we deal with include Microchip,ALPS,ROHM,Xilinx,Pulse,ON,Everlight and Freescale. Main products comprise IC,Modules,Potentiometer,IC Socket,Relay,Connector.Our parts cover such applications as commercial,industrial, and automotives areas.

We are looking forward to setting up business relationship with you and hope to provide you with the best service and solution. Let us make a better world for our industry!



## Contact us

Tel: +86-755-8981 8866 Fax: +86-755-8427 6832

Email & Skype: info@chipsmall.com Web: www.chipsmall.com

Address: A1208, Overseas Decoration Building, #122 Zhenhua RD., Futian, Shenzhen, China





# SAW filters for infrastructure systems

## Series/Type: **B3824**

The following products presented in this data sheet are being withdrawn.

| Ordering Code   | Substitute Product | Date of Withdrawal | Deadline Last Orders | Last Shipments |
|-----------------|--------------------|--------------------|----------------------|----------------|
| B39192B3824U810 | B39192B5148U410    | 2013-03-08         | 2013-12-31           | 2014-03-31     |

For further information please contact your nearest EPCOS sales office, which will also support you in selecting a suitable substitute. The addresses of our worldwide sales network are presented at [www.epcos.com/sales](http://www.epcos.com/sales).

© EPCOS AG 2015. Reproduction, publication and dissemination of this publication, enclosures hereto and the information contained therein without EPCOS' prior express consent is prohibited.

EPCOS AG is a TDK Group Company.

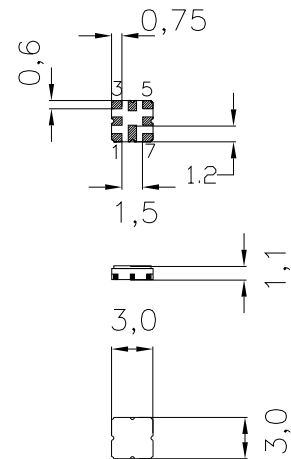
**Data Sheet**

 SMD ceramic package **QCC8D**
**Features**

- Very low loss RF filter
- Unbalanced to unbalanced or unbalanced to balanced operation
- Package for **Surface Mounted Technology (SMT)**

**Terminals**

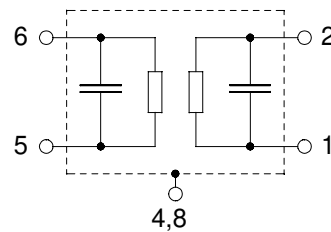
- Ni, gold-plated



Dimensions in mm, approx. weight 0,037 g

**Pin configuration**

- |      |                  |
|------|------------------|
| 6    | Input            |
| 5    | Input ground     |
| 2    | Output, balanced |
| 1    | Output, balanced |
| 3, 7 | To be grounded   |
| 4, 8 | Case - ground    |



| Type  | Ordering code     | Marking and Package according to | Packing according to |
|-------|-------------------|----------------------------------|----------------------|
| B3824 | B39192-B3824-U810 | C61157-A7-A72-5                  | F61074-V8168-Z000    |

Electrostatic Sensitive Device (ESD)

**Maximum ratings**

|                            |           |           |     |
|----------------------------|-----------|-----------|-----|
| Operable temperature range | $T$       | - 40/+ 85 | °C  |
| Storage temperature range  | $T_{stg}$ | - 40/+ 85 | °C  |
| DC voltage                 | $V_{DC}$  | 0         | V   |
| Source power               | $P_s$     | 3         | dBm |

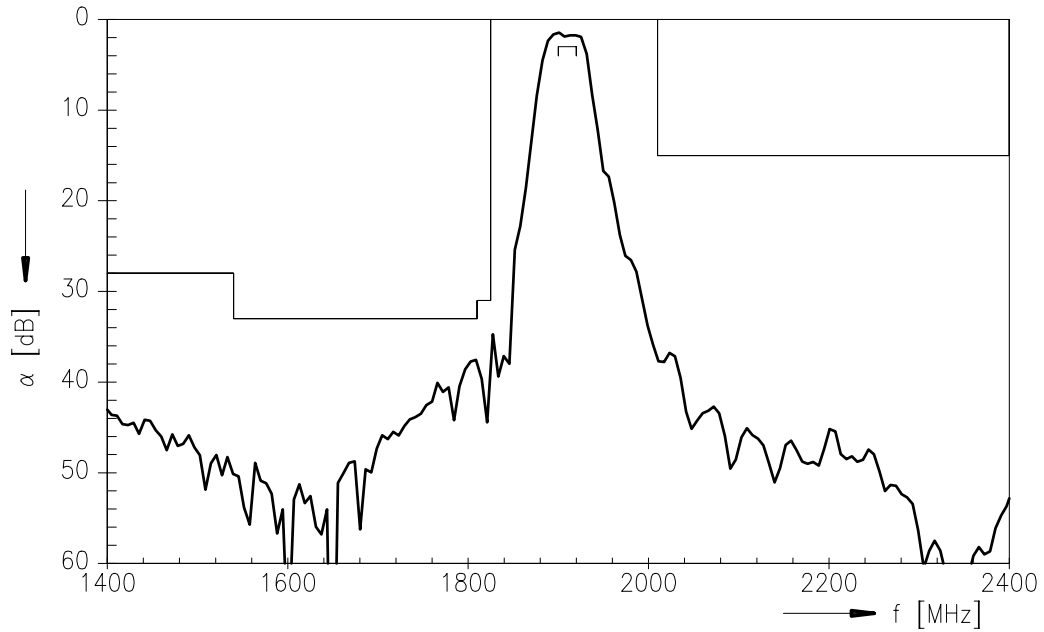
**Data Sheet**
**Characteristics**

|                               |       |   |                        |
|-------------------------------|-------|---|------------------------|
| Operating temperature range:  | $T_A$ | = | -5 ... +85 °C          |
| Terminating source impedance: | $Z_S$ | = | 50 $\Omega$ unbalanced |
| Terminating load impedance:   | $Z_L$ | = | 50 $\Omega$ balanced   |

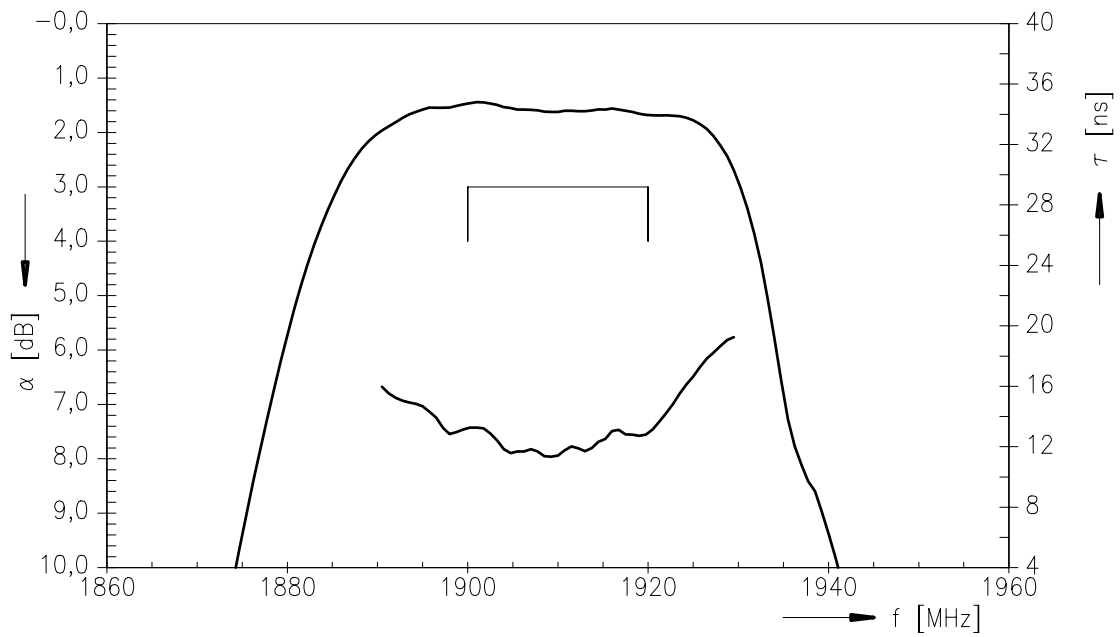
|   |                       | min. | typ.  | max.  |     |
|---|-----------------------|------|-------|-------|-----|
| <b>Nominal frequency</b>  | $f_N$                 | —    | 1910  | —     | MHz |
| <b>Maximum insertion attenuation</b><br>1900 MHz ... 1920 MHz                                 | $\alpha_{\max}$       | —    | 2,0   | 3,0   | dB  |
| <b>Amplitude ripple in passband (p-p)</b><br>over any 4 MHz within<br>1900 MHz ... 1920 MHz   | $\Delta\alpha$        | —    | 0,5   | 0,7   | dB  |
| <b>Group delay ripple in passband (p-p)</b><br>over any 4 MHz within<br>1900 MHz ... 1920 MHz | $\Delta\alpha$        | —    | 2,5   | 4,0   | ns  |
| <b>Attenuation</b>  | $\alpha_{\text{abs}}$ |      |       |       |     |
| 100,0 MHz ... 1540 MHz  |                       | 28   | 33    | —     | dB  |
| 1540 MHz ... 1810 MHz   |                       | 33   | 37    | —     | dB  |
| 1810 MHz ... 1825 MHz   |                       | 31   | 34    | —     | dB  |
| 2020 MHz ... 5000 MHz   |                       | 15   | 20    | —     | dB  |
| <b>VSWR</b><br>1900 MHz ... 1920 MHz  |                       | —    | 1,8:1 | 2,4:1 |     |
| <b>Deviation from linear phase (p-p)</b><br>over any 4 MHz within<br>1900 MHz ... 1920 MHz    |                       | —    | 0,8   | 1,3   | °   |

Data Sheet

Transfer function



Transfer function (pass band)



**Published by EPCOS AG****Surface Acoustic Wave Components Division, SAW MC IS****P.O. Box 80 17 09, 81617 Munich, GERMANY**

© EPCOS AG 2002. Reproduction, publication and dissemination of this brochure and the information contained therein without EPCOS' prior express consent is prohibited.

Purchase orders are subject to the General Conditions for the Supply of Products and Services of the Electrical and Electronics Industry recommended by the ZVEI (German Electrical and Electronic Manufacturers' Association), unless otherwise agreed.

This brochure replaces the previous edition.

For questions on technology, prices and delivery please contact the Sales Offices of EPCOS AG or the international Representatives.

Due to technical requirements components may contain dangerous substances. For information on the type in question please also contact one of our Sales Offices.