



Chipsmall Limited consists of a professional team with an average of over 10 year of expertise in the distribution of electronic components. Based in Hongkong, we have already established firm and mutual-benefit business relationships with customers from,Europe,America and south Asia,supplying obsolete and hard-to-find components to meet their specific needs.

With the principle of “Quality Parts,Customers Priority,Honest Operation,and Considerate Service”,our business mainly focus on the distribution of electronic components. Line cards we deal with include Microchip,ALPS,ROHM,Xilinx,Pulse,ON,Everlight and Freescale. Main products comprise IC,Modules,Potentiometer,IC Socket,Relay,Connector.Our parts cover such applications as commercial,industrial, and automotives areas.

We are looking forward to setting up business relationship with you and hope to provide you with the best service and solution. Let us make a better world for our industry!



Contact us

Tel: +86-755-8981 8866 Fax: +86-755-8427 6832

Email & Skype: info@chipsmall.com Web: www.chipsmall.com

Address: A1208, Overseas Decoration Building, #122 Zhenhua RD., Futian, Shenzhen, China





SAW Components

Data Sheet B7717





SAW Components

B7717

Low-Loss Filter for Mobile Communication

1960,0 MHz

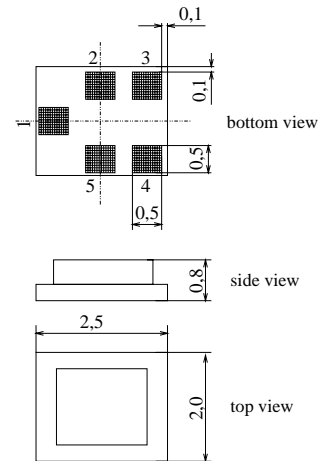
Data Sheet



Chip sized SAW package **QCS5A**

Features

- Low-loss RF filter for mobile telephone PCS systems, receive path
- Low amplitude ripple
- Usable passband 60 MHz
- Unbalanced to balanced operation
- Impedance transformation from 50Ω to 200Ω
- Suitable for GPRS class 1 to 12
- Package for **Surface Mounted Technology (SMT)**



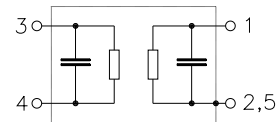
Terminals

- Gold-plated Ni

Dimensions in mm, approx. weight 0,015 g

Pin configuration

- 1 Input, unbalanced
- 2, 5 Input ground
- 3, 4 Output, balanced
- 2, 5 To be grounded



Type	Ordering code	Marking and Package according to	Packing according to
B7717	B39202-B7717-B610	C61157-A7-A71	F61074-V8104-Z000

Electrostatic Sensitive Device (ESD)

Maximum ratings

Operating temperature range	T	- 30/+ 85	°C	
Storage temperature range	T_{stg}	- 40/+ 85	°C	
DC voltage	V_{DC}	5	V	
ESD voltage	V_{ESD}	50	V	
Input power at				
GSM850, GSM900	P_{IN}	15	dBm	peak power of GSM signal, duty cycle 4:8
GSM1800, GSM1900	P_{IN}	12	dBm	
Tx bands				



SAW Components

B7717

Low-Loss Filter for Mobile Communication

1960,0 MHz

Data Sheet



Characteristics

Operating temperature range: $T = + 25 \pm 2 \text{ }^\circ\text{C}$
 Terminating source impedance: $Z_S = 50 \text{ }\Omega$
 Terminating load impedance: $Z_L = 200 \text{ }\Omega$ (balanced) || 15 nH

		min.	typ.	max.	
Center frequency	f_C	—	1960,0	—	MHz
Maximum insertion attenuation	α_{\max}	—	2,6	3,1	dB
1930,0 ... 1990,0 MHz					
Amplitude ripple (p-p)	$\Delta\alpha$	—	1,0	1,5	dB
1930,0 ... 1990,0 MHz					
Input VSWR		—	1,7	2,2	
1930,0 ... 1990,0 MHz					
Output VSWR		—	1,7	2,2	
1930,0 ... 1990,0 MHz					
Output phase balance ($\phi(S_{31}) - \phi(S_{21}) + 180^\circ$)		-15	0	15	degree
1930,0 ... 1990,0 MHz					
Output amplitude balance (S_{31}/S_{21})		-1,5	0	1,5	dB
1930,0 ... 1990,0 MHz					
Attenuation	α				
0,0 ... 1000,0 MHz		45	50	—	dB
1000,0 ... 1830,0 MHz		25	31	—	dB
1830,0 ... 1900,0 MHz		15	19	—	dB
1900,0 ... 1910,0 MHz		11	18	—	dB
2010,0 ... 2030,0 MHz		8	11	—	dB
2030,0 ... 2070,0 MHz		12	14	—	dB
2070,0 ... 2310,0 MHz		20	22	—	dB
2310,0 ... 2380,0 MHz		35	43	—	dB
2380,0 ... 4600,0 MHz		30	42	—	dB
4600,0 ... 6000,0 MHz		23	50	—	dB



SAW Components

B7717

Low-Loss Filter for Mobile Communication

1960,0 MHz

Data Sheet



Characteristics

Operating temperature range: $T = -10$ to $+75$ °C
 Terminating source impedance: $Z_S = 50 \Omega$
 Terminating load impedance: $Z_L = 200 \Omega$ (balanced) || 15 nH

		min.	typ.	max.	
Center frequency	f_C	—	1960,0	—	MHz
Maximum insertion attenuation	α_{max}	—	2,8	3,5	dB
1930,0 ... 1990,0 MHz					
Amplitude ripple (p-p)	$\Delta\alpha$	—	1,2	1,9	dB
1930,0 ... 1990,0 MHz					
Input VSWR		—	1,7	2,4	
1930,0 ... 1990,0 MHz					
Output VSWR		—	1,7	2,4	
1930,0 ... 1990,0 MHz					
Output phase balance ($\phi(S_{31}) - \phi(S_{21}) + 180^\circ$)		-15	0	15	degree
1930,0 ... 1990,0 MHz					
Output amplitude balance (S_{31}/S_{21})		-1,5	0	1,5	dB
1930,0 ... 1990,0 MHz					
Attenuation	α				
0,0 ... 1000,0 MHz		45	50	—	dB
1000,0 ... 1830,0 MHz		25	31	—	dB
1830,0 ... 1900,0 MHz		15	19	—	dB
1900,0 ... 1910,0 MHz		7	15	—	dB
2010,0 ... 2030,0 MHz		5	11	—	dB
2030,0 ... 2070,0 MHz		12	14	—	dB
2070,0 ... 2310,0 MHz		20	22	—	dB
2310,0 ... 2380,0 MHz		35	43	—	dB
2380,0 ... 4600,0 MHz		30	42	—	dB
4600,0 ... 6000,0 MHz		23	50	—	dB



SAW Components

B7717

Low-Loss Filter for Mobile Communication

1960,0 MHz

Data Sheet



Characteristics

Operating temperature range: $T = -30$ to $+85$ °C
 Terminating source impedance: $Z_S = 50 \Omega$
 Terminating load impedance: $Z_L = 200 \Omega$ (balanced) || 15 nH

		min.	typ.	max.	
Center frequency	f_C	—	1960,0	—	MHz
Maximum insertion attenuation	α_{max}	—	2,9	4,0	dB
1930,0 ... 1990,0 MHz					
Amplitude ripple (p-p)	$\Delta\alpha$	—	1,3	2,4	dB
1930,0 ... 1990,0 MHz					
Input VSWR		—	1,7	2,4	
1930,0 ... 1990,0 MHz					
Output VSWR		—	1,7	2,4	
1930,0 ... 1990,0 MHz					
Output phase balance ($\phi(S_{31}) - \phi(S_{21}) + 180^\circ$)		-15	0	15	degree
1930,0 ... 1990,0 MHz					
Output amplitude balance (S_{31}/S_{21})		-1,5	0	1,5	dB
1930,0 ... 1990,0 MHz					
Attenuation	α				
0,0 ... 1000,0 MHz		45	50	—	dB
1000,0 ... 1830,0 MHz		25	31	—	dB
1830,0 ... 1900,0 MHz		15	19	—	dB
1900,0 ... 1910,0 MHz		7	15	—	dB
2010,0 ... 2030,0 MHz		5	11	—	dB
2030,0 ... 2070,0 MHz		12	14	—	dB
2070,0 ... 2310,0 MHz		20	22	—	dB
2310,0 ... 2380,0 MHz		35	43	—	dB
2380,0 ... 4600,0 MHz		30	42	—	dB
4600,0 ... 6000,0 MHz		23	50	—	dB



SAW Components

B7717

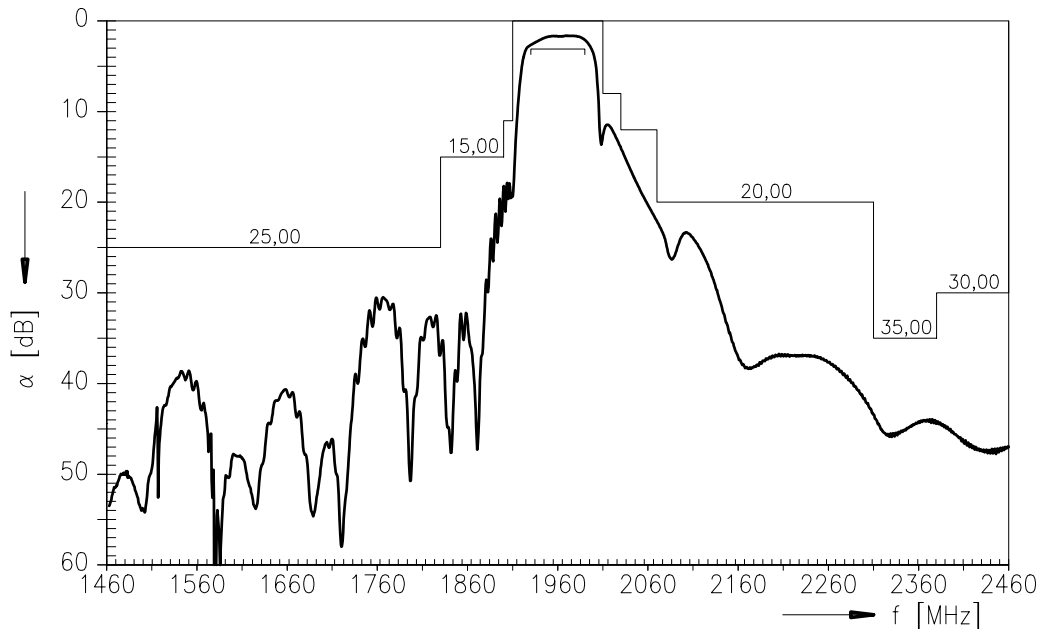
Low-Loss Filter for Mobile Communication

1960,0 MHz

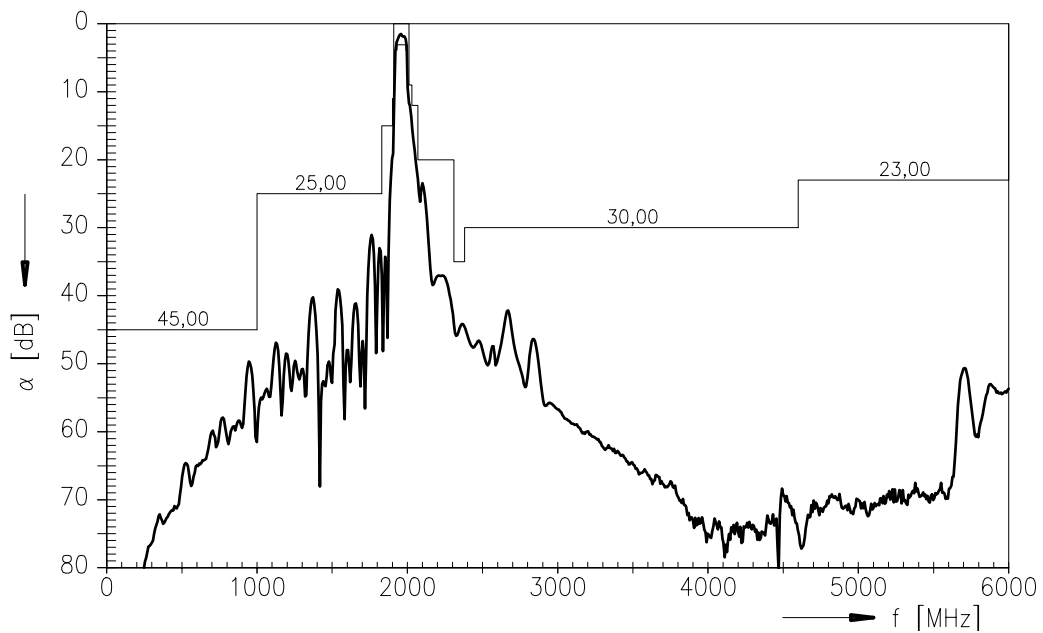
Data Sheet



Transfer function (spec at 25 °C)



Transfer function (wide band):'





SAW Components

B7717

Low-Loss Filter for Mobile Communication

1960,0 MHz

Data Sheet



Published by EPCOS AG

Surface Acoustic Wave Components Division, SAW MC WT

P.O. Box 80 17 09, 81617 Munich, GERMANY

© EPCOS AG 2002. Reproduction, publication and dissemination of this brochure and the information contained therein without EPCOS' prior express consent is prohibited.

Purchase orders are subject to the General Conditions for the Supply of Products and Services of the Electrical and Electronics Industry recommended by the ZVEI (German Electrical and Electronic Manufacturers' Association), unless otherwise agreed.

This brochure replaces the previous edition.

For questions on technology, prices and delivery please contact the Sales Offices of EPCOS AG or the international Representatives.

Due to technical requirements components may contain dangerous substances. For information on the type in question please also contact one of our Sales Offices.