



Chipsmall Limited consists of a professional team with an average of over 10 year of expertise in the distribution of electronic components. Based in Hongkong, we have already established firm and mutual-benefit business relationships with customers from,Europe,America and south Asia,supplying obsolete and hard-to-find components to meet their specific needs.

With the principle of “Quality Parts,Customers Priority,Honest Operation,and Considerate Service”,our business mainly focus on the distribution of electronic components. Line cards we deal with include Microchip,ALPS,ROHM,Xilinx,Pulse,ON,Everlight and Freescale. Main products comprise IC,Modules,Potentiometer,IC Socket,Relay,Connector.Our parts cover such applications as commercial,industrial, and automotives areas.

We are looking forward to setting up business relationship with you and hope to provide you with the best service and solution. Let us make a better world for our industry!



Contact us

Tel: +86-755-8981 8866 Fax: +86-755-8427 6832

Email & Skype: info@chipsmall.com Web: www.chipsmall.com

Address: A1208, Overseas Decoration Building, #122 Zhenhua RD., Futian, Shenzhen, China





SAW filters for infrastructure systems

Series/Type: **B7823**

The following products presented in this data sheet are being withdrawn.

Ordering Code	Substitute Product	Date of Withdrawal	Deadline Last Orders	Last Shipments
B39202B7823C710	B39202B9007E610	2010-06-25	2011-06-30	2011-09-30

For further information please contact your nearest EPCOS sales office, which will also support you in selecting a suitable substitute. The addresses of our worldwide sales network are presented at www.epcos.com/sales.

Preliminary Data

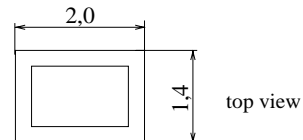
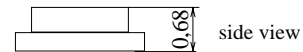
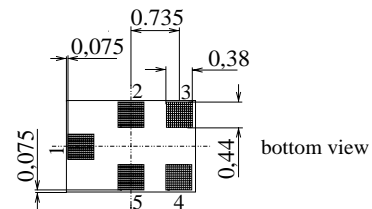

Chip sized SAW package QCS5C

Features

- Low-loss RF filter for mobile telephone PCS systems, receive path
- Low amplitude ripple
- Usable passband 60 MHz
- Unbalanced to unbalanced operation
- Package for **Surface Mount Technology (SMT)**

Terminals

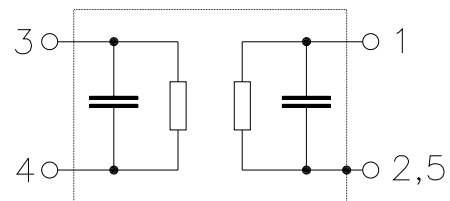
- Ni, gold-plated



Dimensions in mm, approx. weight 0,007 g

Pin configuration

- | | |
|-----|--------------------|
| 1 | Input, unbalanced |
| 4 | Output, unbalanced |
| 2,5 | Case ground |
| 3 | to be grounded |



Type	Ordering code	Marking and Package according to	Packing according to
B7823	B39202-B7823-C710	C61157-A7-A111	F61074-V8151-Z000

Electrostatic Sensitive Device (ESD)

Maximum ratings

Operable temperature range	T	- 30 / + 85	°C	peak power of GSM signal, duty cycle 4:8
Storage temperature range	T_{stg}	- 40 / + 85	°C	
Input Power at				
GSM850, GSM900	P_{IN}	15	dBm	
GSM1800, GSM1900	P_{IN}	12	dBm	
Tx bands				

Preliminary Data

Characteristics

Operating Temperature Range:	$T = +25 \pm 2 \text{ }^\circ\text{C}$
Terminating source impedance:	$Z_S = 50\Omega$ (unbalanced)
Terminating load impedance:	$Z_L = 50\Omega$ (unbalanced)

			min.	typ.	max.	
Center frequency	f_C		—	1960,0	—	MHz
Maximum insertion attenuation	α_{\max}	1930,0 ... 1990,0 MHz	—	2,3	2,8	dB
Amplitude ripple (p-p)	$\Delta\alpha$	1930,0 ... 1990,0 MHz	—	0,8	1,3	dB
Input VSWR		1930,0 ... 1990,0 MHz	—	1,7	1,9	
Output VSWR		1930,0 ... 1990,0 MHz	—	1,8	2,0	
Attenuation	α					
		0,0 ... 1500,0 MHz	35	42	—	dB
		1500,0 ... 1700,0 MHz	30	38	—	dB
		1700,0 ... 1850,0 MHz	25	30	—	dB
		1850,0 ... 1890,0 MHz	22	25	—	dB
		1890,0 ... 1910,0 MHz	13	16	—	dB
		2010,0 ... 2070,0 MHz	13	16	—	dB
		2070,0 ... 2090,0 MHz	20	24	—	dB
		2090,0 ... 2200,0 MHz	25	28	—	dB
		2200,0 ... 2400,0 MHz	25	32	—	dB
		2400,0 ... 2500,0 MHz	30	35	—	dB
		2500,0 ... 3600,0 MHz	30	35	—	dB
		3600,0 ... 4000,0 MHz	30	38	—	dB
		4000,0 ... 6000,0 MHz	25	35	—	dB

Preliminary Data

Characteristics

Operating Temperature Range:	$T = -10$ to $+80^{\circ}\text{C}$
Terminating source impedance:	$Z_S = 50\Omega$ (unbalanced)
Terminating load impedance:	$Z_L = 50\Omega$ (unbalanced)

		min.	typ.	max.	
Center frequency	f_C	—	1960,0	—	MHz
Maximum insertion attenuation	α_{\max}	—	2,3	3,0	dB
1930,0 ... 1990,0 MHz					
Amplitude ripple (p-p)	$\Delta\alpha$	—	0,8	1,5	dB
1930,0 ... 1990,0 MHz					
Input VSWR		—	1,7	1,9	
1930,0 ... 1990,0 MHz					
Output VSWR		—	1,8	2,0	
1930,0 ... 1990,0 MHz					
Attenuation	α				
0,0 ... 1500,0 MHz		35	42	—	dB
1500,0 ... 1700,0 MHz		30	38	—	dB
1700,0 ... 1850,0 MHz		25	30	—	dB
1850,0 ... 1890,0 MHz		20	24	—	dB
1890,0 ... 1910,0 MHz		9	13	—	dB
2010,0 ... 2070,0 MHz		9	13	—	dB
2070,0 ... 2090,0 MHz		18	23	—	dB
2090,0 ... 2200,0 MHz		25	28	—	dB
2200,0 ... 2400,0 MHz		25	32	—	dB
2400,0 ... 2500,0 MHz		30	35	—	dB
2500,0 ... 3600,0 MHz		30	35	—	dB
3600,0 ... 4000,0 MHz		30	38	—	dB
4000,0 ... 6000,0 MHz		25	35	—	dB

Preliminary Data

Characteristics

Operating Temperature Range:	$T = -30$ to $+85^{\circ}\text{C}$
Terminating source impedance:	$Z_S = 50\Omega$ (unbalanced)
Terminating load impedance:	$Z_L = 50\Omega$ (unbalanced)

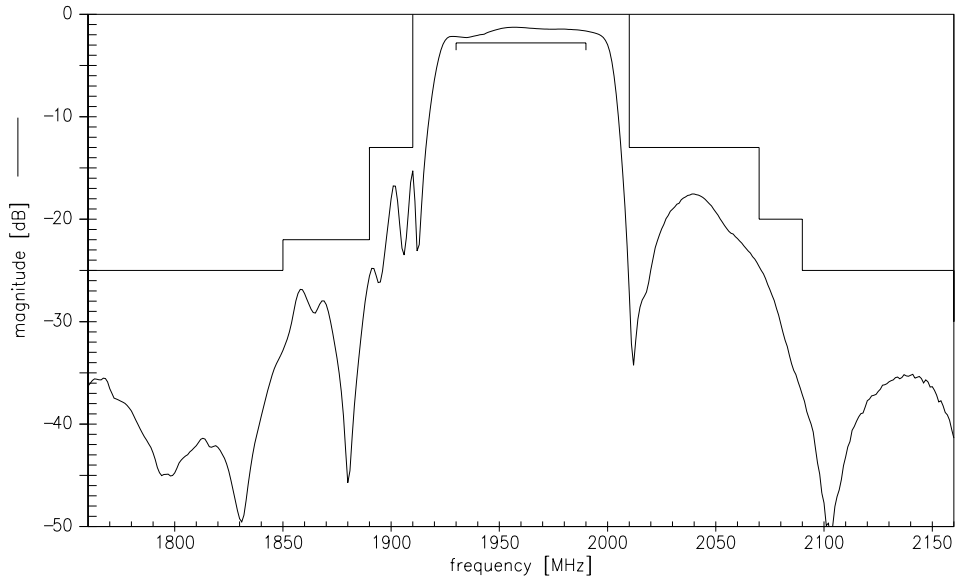
		min.	typ.	max.	
Center frequency	f_C	—	1960,0	—	MHz
Maximum insertion attenuation	α_{\max}	—	2,6	3,3	dB
	1930,0 ... 1990,0 MHz				
Amplitude ripple (p-p)	$\Delta\alpha$	—	1,1	1,8	dB
	1930,0 ... 1990,0 MHz				
Input VSWR		—	1,9	2,1	
	1930,0 ... 1990,0 MHz				
Output VSWR		—	2,0	2,2	
	1930,0 ... 1990,0 MHz				
Attenuation	α				
	0,0 ... 1500,0 MHz	35	42	—	dB
	1500,0 ... 1700,0 MHz	30	38	—	dB
	1700,0 ... 1850,0 MHz	25	30	—	dB
	1850,0 ... 1890,0 MHz	20	24	—	dB
	1890,0 ... 1910,0 MHz	8	12	—	dB
	2010,0 ... 2070,0 MHz	6*	10*	—	dB
	2070,0 ... 2090,0 MHz	18	23	—	dB
	2090,0 ... 2200,0 MHz	25	28	—	dB
	2200,0 ... 2400,0 MHz	25	32	—	dB
	2400,0 ... 2500,0 MHz	30	35	—	dB
	2500,0 ... 3600,0 MHz	30	35	—	dB
	3600,0 ... 4000,0 MHz	30	38	—	dB
	4000,0 ... 6000,0 MHz	25	35	—	dB

* 7dB (min.) (11dB typ.) for $T = -20$ to $+85^{\circ}\text{C}$

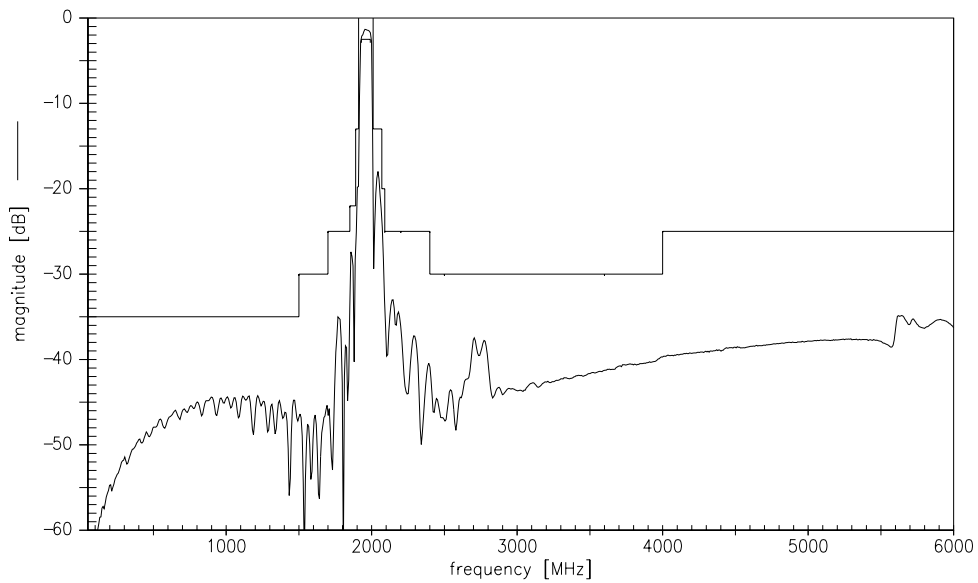
Preliminary Data



Transfer function (spec for 25°C)



Transfer function (wideband)



**Published by EPCOS AG****Surface Acoustic Wave Components Division, SAW MC WT****P.O. Box 80 17 09, D-81617 München**

© EPCOS AG 2002. All Rights Reserved. Reproduction, publication and dissemination of this brochure and the information contained therein without EPCOS' prior express consent is prohibited.

The information contained in this brochure describes the type of component and shall not be considered as guaranteed characteristics. Purchase orders are subject to the General Conditions for the Supply of Products and Services of the Electrical and Electronics Industry recommended by the ZVEI (German Electrical and Electronic Manufacturers' Association), unless otherwise agreed.

This brochure replaces the previous edition.

For questions on technology, prices and delivery please contact the Sales Offices of EPCOS AG or the international Representatives.

Due to technical requirements components may contain dangerous substances. For information on the type in question please also contact one of our Sales Offices.