



Chipsmall Limited consists of a professional team with an average of over 10 year of expertise in the distribution of electronic components. Based in Hongkong, we have already established firm and mutual-benefit business relationships with customers from,Europe,America and south Asia,supplying obsolete and hard-to-find components to meet their specific needs.

With the principle of "Quality Parts,Customers Priority,Honest Operation,and Considerate Service",our business mainly focus on the distribution of electronic components. Line cards we deal with include Microchip,ALPS,ROHM,Xilinx,Pulse,ON,Everlight and Freescale. Main products comprise IC,Modules,Potentiometer,IC Socket,Relay,Connector.Our parts cover such applications as commercial,industrial, and automotives areas.

We are looking forward to setting up business relationship with you and hope to provide you with the best service and solution. Let us make a better world for our industry!



## Contact us

Tel: +86-755-8981 8866 Fax: +86-755-8427 6832

Email & Skype: info@chipsmall.com Web: www.chipsmall.com

Address: A1208, Overseas Decoration Building, #122 Zhenhua RD., Futian, Shenzhen, China





# SAW Filters for Mobile Communications

## Series/Type: **B7835**

The following products presented in this data sheet are being withdrawn.

Ordering Code	Substitute Product	Date of Withdrawal	Deadline Last Orders	Last Shipments
B39212B7835C710	B39212B9408K610	2010-01-15	2010-04-30	2010-07-30

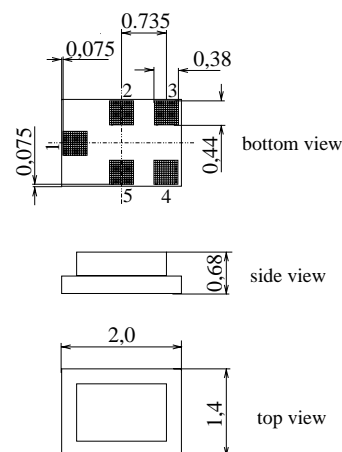
For further information please contact your nearest EPCOS sales office, which will also support you in selecting a suitable substitute. The addresses of our worldwide sales network are presented at [www.epcos.com/sales](http://www.epcos.com/sales).



Chip sized SAW package QCS5C

**Features**

- Low-loss RF filter for mobile telephone W-CDMA system, receive path
- Low amplitude ripple
- Usable passband 60 MHz
- Unbalanced to balanced operation
- Impedance transformation from 50Ω to 200Ω
- Package for **Surface Mounted Technology (SMT)**
- Chip Sized SAW Package (CSSP)

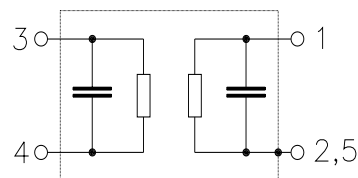

**Terminals**

- Gold-plated Ni

Dimensions in mm, approx. weight 0,012 g

**Pin configuration**

- |      |                   |
|------|-------------------|
| 1    | Input, unbalanced |
| 3, 4 | Output, balanced  |
| 2, 5 | To be grounded    |



Type	Ordering code	Marking and Package according to	Packing according to
B7835	B39212-B7835-C710	C61157-A7-A111	F61074-V8151-Z000

Electrostatic Sensitive Device (ESD)

**Maximum ratings**

Operating temperature range	$T$	- 20/+ 85	°C	Machine Model, 10 pulses
Storage temperature range	$T_{stg}$	- 40/+ 85	°C	
DC voltage	$V_{DC}$	5	V	
ESD voltage	$V_{ESD}^*$	50	V	
Source power	$P_S$	10	dBm	

\* - acc. to JESD22-A115A (Machine Model), 10 negative &amp; 10 positive pulses


**Characteristics**

Operating temperature range:  $T = +25^{\circ}\text{C}$   
 Terminating source impedance:  $Z_S = 50\ \Omega$   
 Terminating load impedance:  $Z_L = 200\ \Omega$  (balanced) || 22 nH

		<b>min.</b>	<b>typ.</b>	<b>max.</b>	
<b>Center frequency</b>	$f_C$	—	2140,0	—	MHz
<b>Maximum insertion attenuation</b>	$\alpha_{\max}$	—	2,6	3,0	dB
2110,0 ... 2170,0 MHz					
<b>Amplitude ripple (p-p)</b>	$\Delta\alpha$	—	0,7	1,2	dB
2110,0 ... 2170,0 MHz					
<b>Amplitude ripple per 5MHz channel (p-p)</b>	$\Delta\alpha_{5\text{MHz}}$	—	0,3	0,6	dB
2110,0 ... 2170,0 MHz					
<b>Input VSWR</b>		—	1,5	2,0	
2110,0 ... 2170,0 MHz					
<b>Output VSWR</b>		—	1,7	2,1	
2110,0 ... 2170,0 MHz					
<b>Output amplitude balance (<math> S_{31}/S_{21} </math>)</b>		-1,6		1,6	dB
2110,0 ... 2170,0 MHz					
<b>Output phase balance (<math>\phi(S_{31})-\phi(S_{21})+180^{\circ}</math>)</b>		-12,0		12,0	degree
2110,0 ... 2170,0 MHz					
<b>Attenuation</b>	$\alpha$				
180,0 ... 200,0 MHz		60	68	—	dB
200,0 ... 1000,0 MHz		39	42	—	dB
1000,0 ... 1880,0 MHz		29	32	—	dB
1880,0 ... 1920,0 MHz		34	38	—	dB
1920,0 ... 1980,0 MHz		42	46	—	dB
1980,0 ... 2050,0 MHz		25	29	—	dB
2205,0 ... 2255,0 MHz		15	22	—	dB
2255,0 ... 2300,0 MHz		20	23	—	dB
2300,0 ... 2490,0 MHz		31	35	—	dB
2490,0 ... 2550,0 MHz		35	40	—	dB
2550,0 ... 3200,0 MHz		35	39	—	dB
3200,0 ... 6000,0 MHz		40	52	—	dB

**Data Sheet**

**Characteristics**

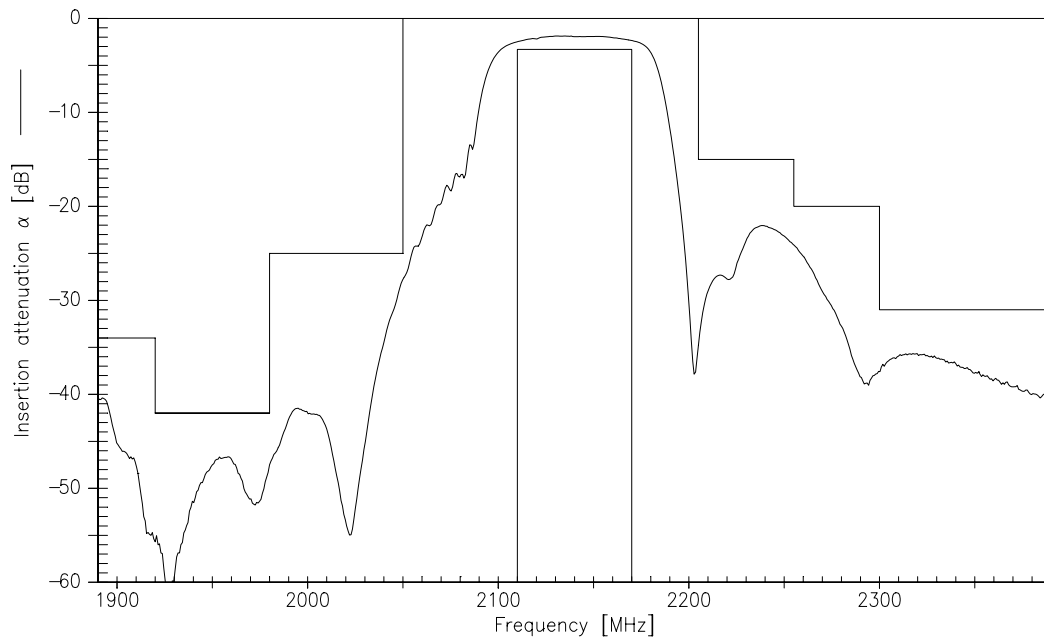
Operating temperature range:  $T = -20$  to  $+85$  °C  
 Terminating source impedance:  $Z_S = 50 \Omega$   
 Terminating load impedance:  $Z_L = 200 \Omega$  (balanced) || 22 nH

		min.	typ.	max.	
<b>Center frequency</b>	$f_C$	—	2140,0	—	MHz
<b>Maximum insertion attenuation</b>	$\alpha_{\max}$	—	2,8	3,3	dB
2110,0 ... 2170,0 MHz					
<b>Amplitude ripple (p-p)</b>	$\Delta\alpha$	—	0,9	1,5	dB
2110,0 ... 2170,0 MHz					
<b>Amplitude ripple per 5MHz channel (p-p)</b>	$\Delta\alpha_{5\text{MHz}}$	—	0,4	0,6	dB
2110,0 ... 2170,0 MHz					
<b>Input VSWR</b>		—	1,6	2,0	
2110,0 ... 2170,0 MHz					
<b>Output VSWR</b>		—	1,7	2,1	
2110,0 ... 2170,0 MHz					
<b>Output amplitude balance (<math> S_{31}/S_{21} </math>)</b>		-1,6		1,6	dB
2110,0 ... 2170,0 MHz					
<b>Output phase balance (<math>\phi(S_{31}) - \phi(S_{21}) + 180^\circ</math>)</b>		-12,0		12,0	degree
2110,0 ... 2170,0 MHz					
<b>Attenuation</b>	$\alpha$				
180,0 ... 200,0 MHz		60	67	—	dB
200,0 ... 1000,0 MHz		39	42	—	
1000,0 ... 1880,0 MHz		29	32	—	dB
1880,0 ... 1920,0 MHz		34	38	—	
1920,0 ... 1980,0 MHz		42	46	—	dB
1980,0 ... 2050,0 MHz		25	26	—	
2205,0 ... 2255,0 MHz		15	22	—	dB
2255,0 ... 2300,0 MHz		20	23	—	
2300,0 ... 2490,0 MHz		31	35	—	dB
2490,0 ... 2550,0 MHz		37	40	—	
2550,0 ... 3200,0 MHz		35	39	—	dB
3200,0 ... 6000,0 MHz		40	52	—	

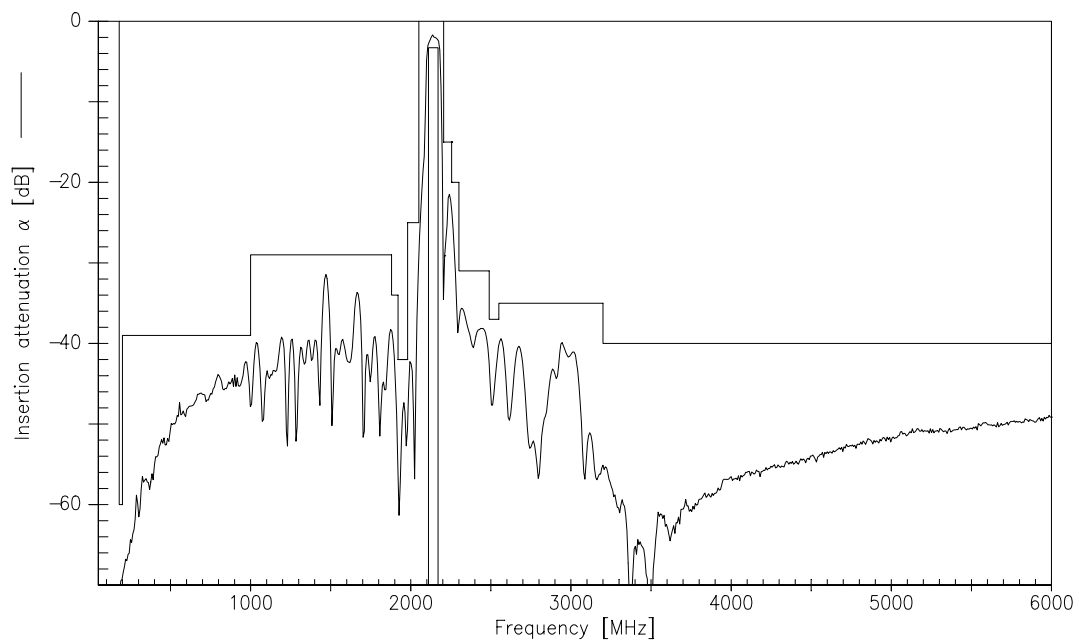




Transfer function



Transfer function (wide band):





**Published by EPCOS AG**  
**Surface Acoustic Wave Components Division, SAW MC**  
**P.O. Box 80 17 09, D-81617 München**

© EPCOS AG 2004. Reproduction, publication and dissemination of this brochure and the information contained therein without EPCOS' prior express consent is prohibited.

Purchase orders are subject to the General Conditions for the Supply of Products and Services of the Electrical and Electronics Industry recommended by the ZVEI (German Electrical and Electronic Manufacturers' Association), unless otherwise agreed.

This brochure replaces the previous edition.

For questions on technology, prices and delivery please contact the Sales Offices of EPCOS AG or the international Representatives.

Due to technical requirements components may contain dangerous substances. For information on the type in question please also contact one of our Sales Offices.